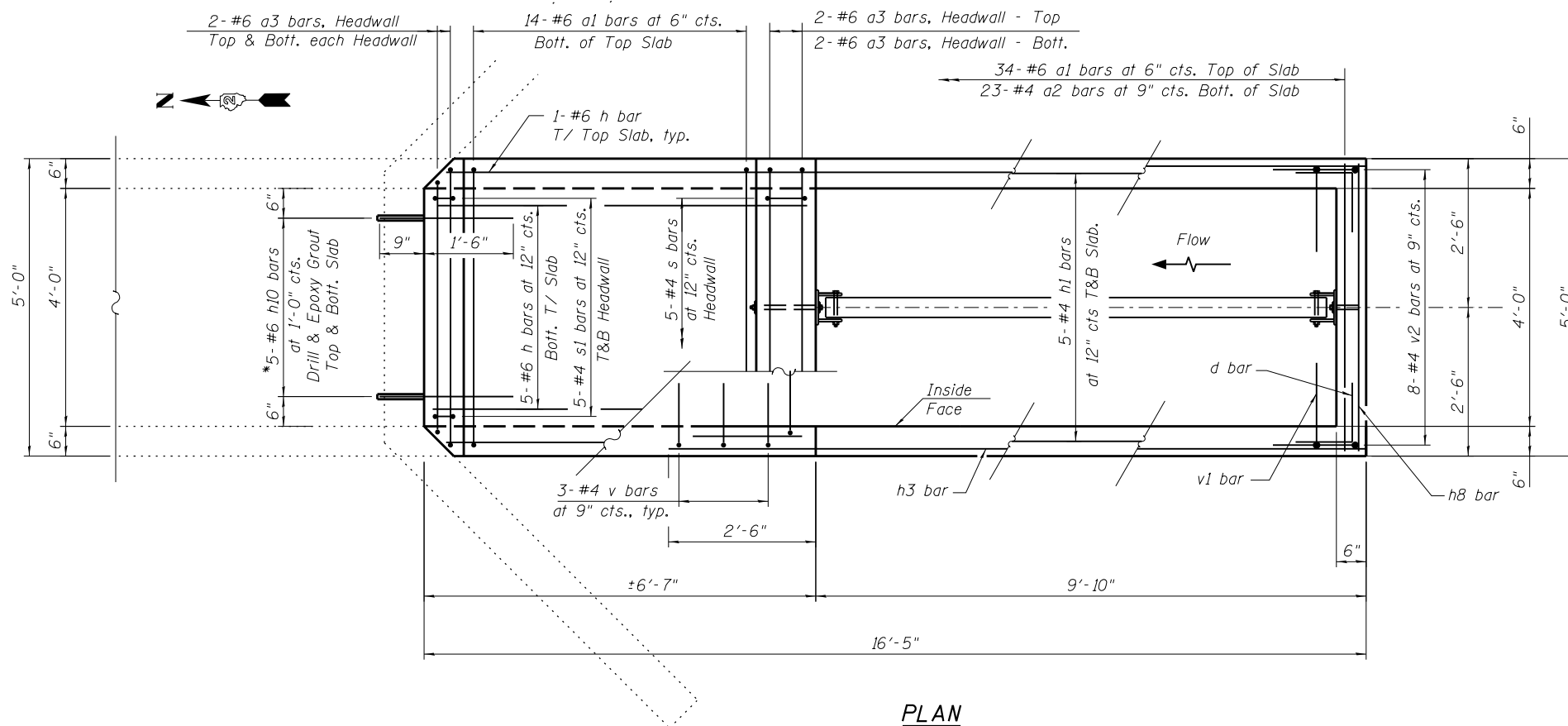


*Epoxy grout reinforcement bars according to the requirements of Section 584 of the Standard Specifications. Chemical adhesive system shall be capable of achieving a minimum proof load of 5,000 lb. Cost included in the pay item Box Culvert End Sections, Culvert No. 13.

LONG. SECTION

Order v1 bars full length. Cut to fit as shown and use remainder of bars in opposite wall.



PLAN

FILE NAME = W:\Projects\2010\100120 PTB 157\25\cadd\Structural\Dgn\W0 #3 IL 92 Culverts\Station975+67.77\Final_Submittal_13.dwg
 WBS PROJECTS\2010\100120 PTB 157\25\cadd\Structural\Dgn\W0 #3 IL 92 Culverts\Station975+67.77\Final_Submittal_13.dwg

WILLS BURKE KELSEY ASSOCIATES LTD.
 116 West Main Street, Suite 201
 St. Charles, Illinois 60174

USER NAME = hferstl	DESIGNED - AEU	REVISED -
PLOT SCALE =	CHECKED - DLS	REVISED -
PLOT DATE = 3/20/2013	DRAWN - AH	REVISED -
	CHECKED - AEU	REVISED -

**STATE OF ILLINOIS
 DEPARTMENT OF TRANSPORTATION**

**BOX CULVERT END SECTION WITH DROP BOX
 STA. 975 + 67.77 RT.**

SHEET NO. 2 OF 7 SHEETS

F.A.P. RTE.	SECTION	COUNTY	TOTAL SHEETS	SHEET NO.
599	(83MFT & 103MFT)W	ROCK ISLAND	340	200
FED. ROAD DIST. NO.			ILLINOIS FED. AID PROJECT	
			CONTRACT NO. 64H11	