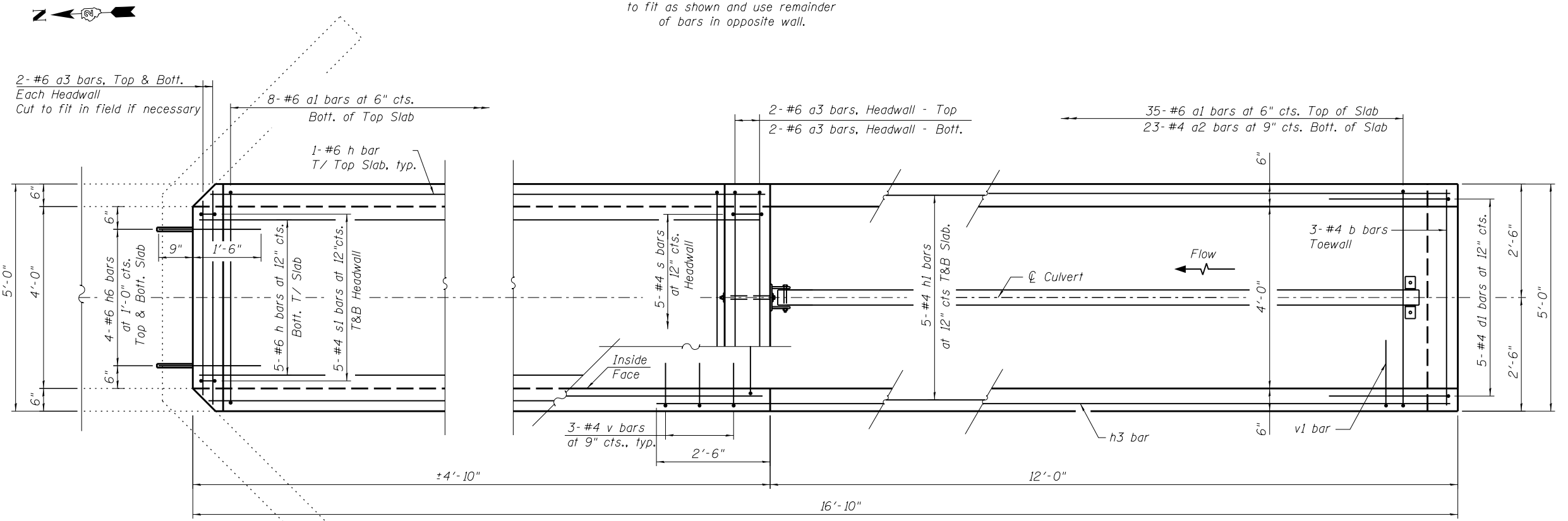


\*Epoxy grout reinforcement bars according to the requirements of Section 584 of the Standard Specifications. Chemical adhesive system shall be capable of achieving a minimum proof load of 5,000 lb. Cost included in the pay item Box Culvert End Sections, Culvert No. 09.

**LONG. SECTION**

Order v1 and h3 bars full length. Cut to fit as shown and use remainder of bars in opposite wall.



**PLAN**

FILE NAME = W:\Projects\2010\100120 PTB 157\25\cadd\Structural\Draw\03 IL 92 Culverts\Station937+98.45\Final Submittal\130320\937+98.45\64H1-002-Culvert End Section.dgn

**WILLS BURKE KELSEY ASSOCIATES LTD.**  
 116 West Main Street, Suite 201  
 St. Charles, Illinois 60174

USER NAME = hferstl	DESIGNED - AEU	REVISED -
PLOT SCALE =	CHECKED - DLS	REVISED -
PLOT DATE = 3/20/2013	DRAWN - AWH	REVISED -
	CHECKED - AEU	REVISED -

**STATE OF ILLINOIS**  
**DEPARTMENT OF TRANSPORTATION**

**BOX CULVERT END SECTION**  
**STA. 937 + 98.45 RT.**

SHEET NO. 2 OF 7 SHEETS

F.A.P. RTE. 599	SECTION (83MFT & 103MFT)W	COUNTY ROCK ISLAND	TOTAL SHEETS 340	SHEET NO. 186
CONTRACT NO. 64H11				
FED. ROAD DIST. NO. ILLINOIS FED. AID PROJECT				