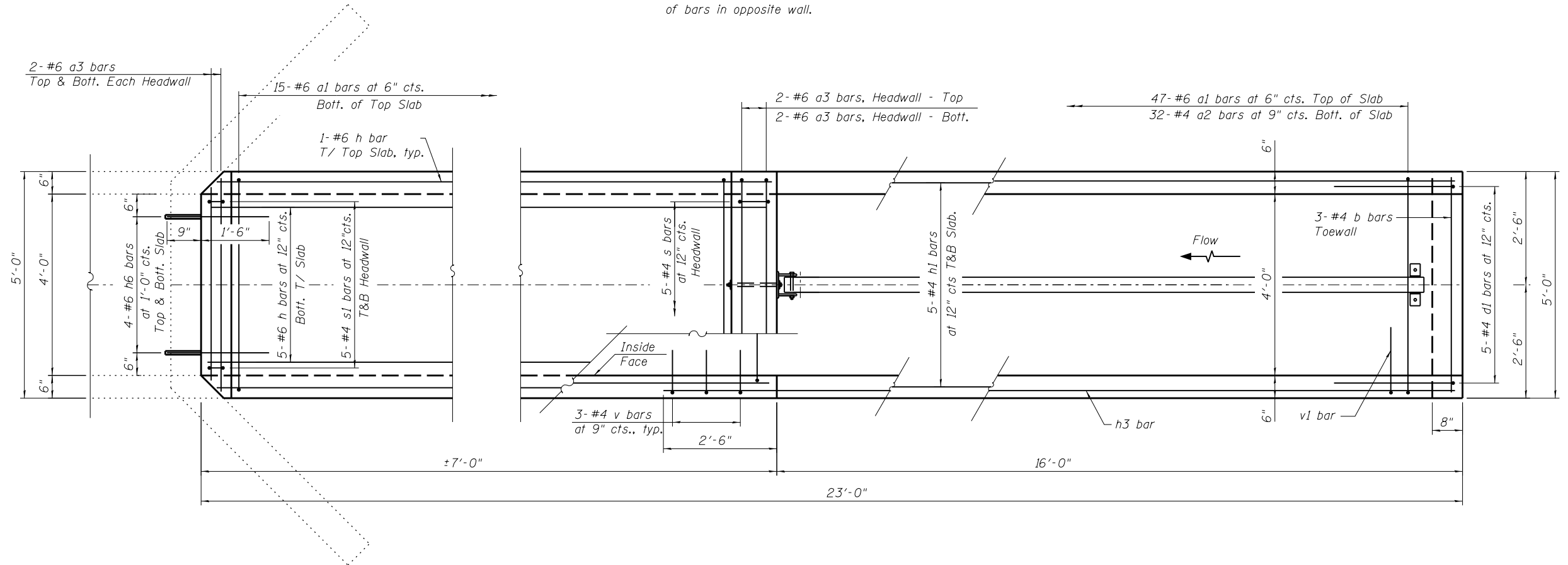
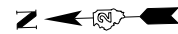


*Epoxy grout reinforcement bars according to the requirements of Section 584 of the Standard Specifications. Chemical adhesive system shall be capable of achieving a minimum proof load of 5,000 lb. Cost included in the pay item Box Culvert End Sections, Culvert No. 08.

LONG. SECTION

Order v1 and h3 bars full length. Cut to fit as shown and use remainder of bars in opposite wall.



PLAN

FILE NAME = W:\Projects\2010\100120 PTB 157\25\cadd\Structural\Drawn\03 IL 92 Culverts\Station\925+59.49\Final_Submittal\130320\925+59.49-64H1-002-Culvert_Ext_Rt.dgn

WILLS BURKE KELSEY ASSOCIATES LTD.
 116 West Main Street, Suite 201
 St. Charles, Illinois 60174

| | | |
|-----------------------|----------------|-----------|
| USER NAME = hferstl | DESIGNED - AEU | REVISED - |
| PLOT SCALE = | CHECKED - DLS | REVISED - |
| PLOT DATE = 3/20/2013 | DRAWN - AH | REVISED - |
| | CHECKED - AEU | REVISED - |

**STATE OF ILLINOIS
 DEPARTMENT OF TRANSPORTATION**

**BOX CULVERT END SECTION
 STA. 925 + 59.49 RT.**

SHEET NO. 2 OF 5 SHEETS

| | | | | |
|---|---------------------------|--------------------|------------------|---------------|
| F.A.P. RTE. 599 | SECTION (83MFT & 103MFT)W | COUNTY ROCK ISLAND | TOTAL SHEETS 340 | SHEET NO. 181 |
| CONTRACT NO. 64H11 | | | | |
| FED. ROAD DIST. NO. ILLINOIS FED. AID PROJECT | | | | |