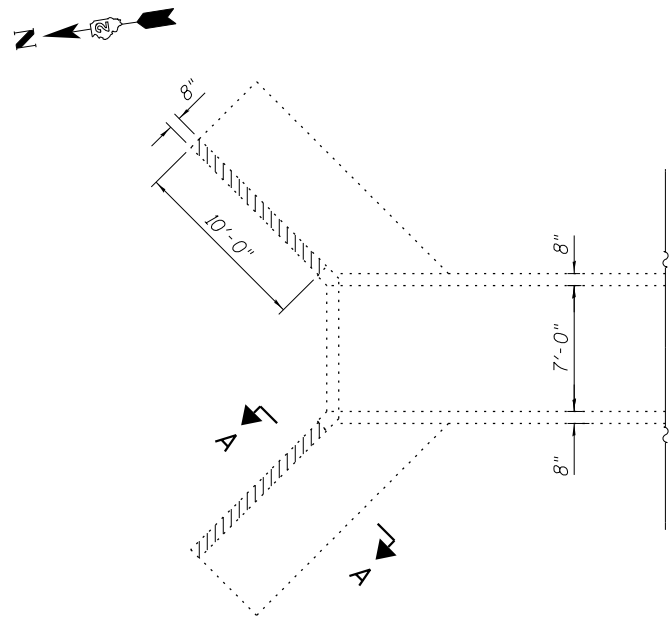


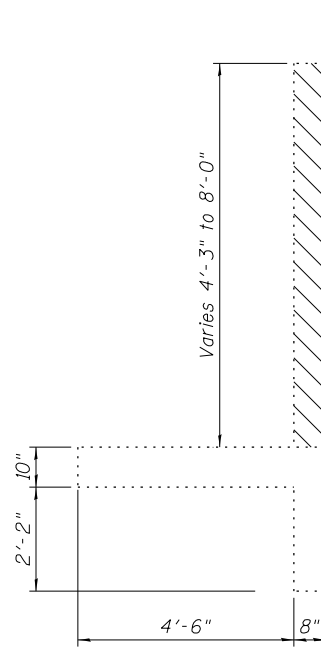
BILL OF MATERIAL

Bar	No.	Size	Length	Shape
h7	8	#5	9'-8"	—
h8	5	#5	11'-1"	—
h9	2	#5	9'-9"	—
h10	38	#6	2'-8"	—
v2	10	#6	11'-7"	—
DESCRIPTION		UNIT	QTY.	
Concrete Structures		Cu. Yd.	3.1	
Reinforcement Bars		Pound	480	



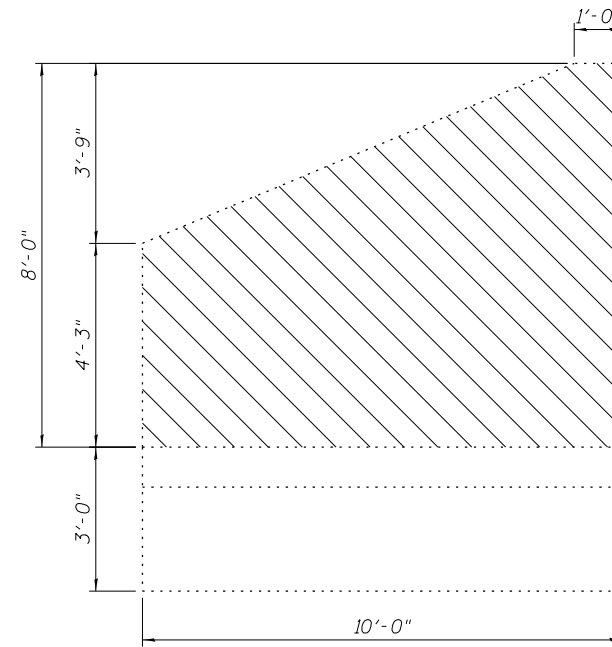
REMOVAL PLAN

Indicates Concrete Wingwall Removal



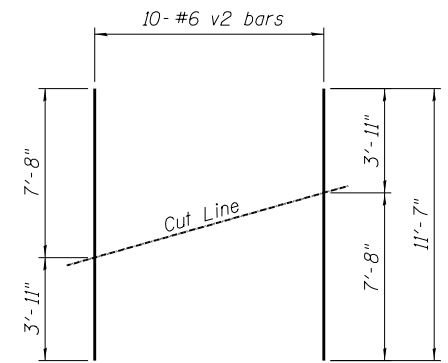
SECTION A-A

Top portion of existing reinforced concrete wingwall to be removed

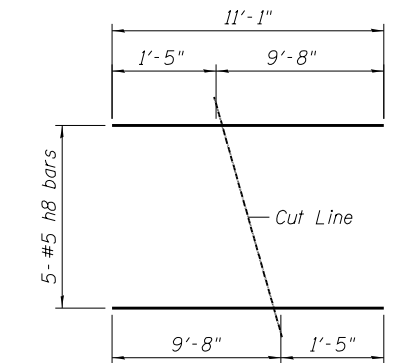


ELEVATION

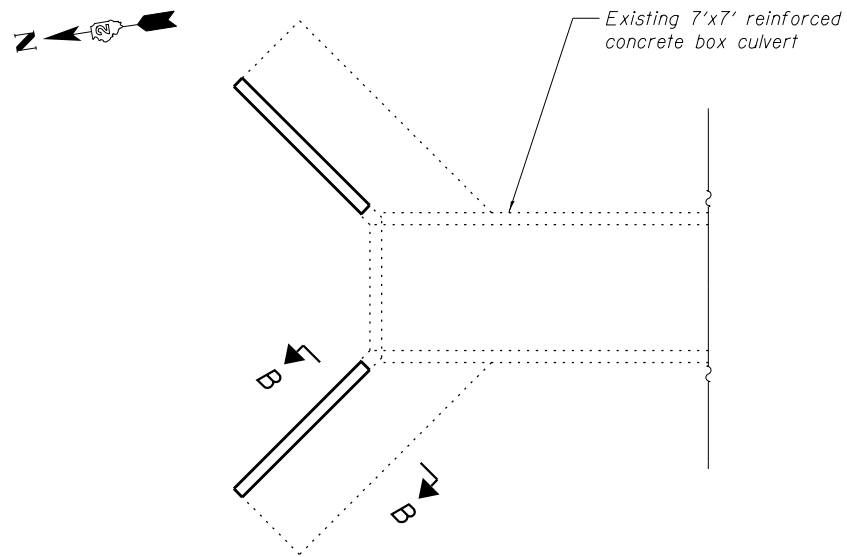
Top portion of existing reinforced concrete wingwall to be removed



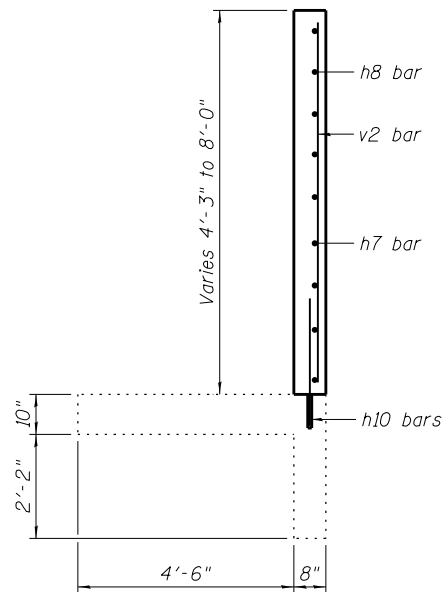
BAR v2



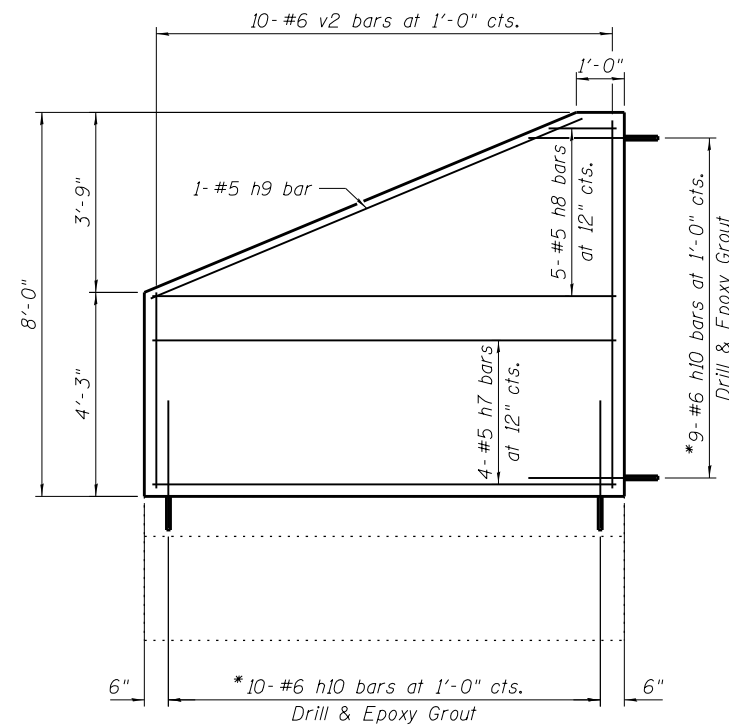
BAR h8



PLAN



SECTION B-B



WINGWALL ELEVATION

Order v2 and h8 bars full length. Cut to fit as shown and use remainder of bars in opposite wingwall.

*Epoxy grout reinforcement bars according to the requirements of Section 584 of the Standard Specifications. Chemical adhesive system shall be capable of achieving a minimum proof load of 5,000 lb. Cost included in the pay item Concrete Structures.

FILE NAME = W:\Projects\2010\100120 PTB 157\25\cadd\Structural\Dgn\10 #3 IL 92 Culverts\Station900+34.74\Final_Submittal_13.0320.dgn

USER NAME = hferstl	DESIGNED - HLF	REVISED -
PLOT SCALE =	CHECKED - AEU	REVISED -
PLOT DATE = 3/20/2013	DRAWN - HLF	REVISED -
	CHECKED - AEU	REVISED -

F.A.P. RTE.	SECTION	COUNTY	TOTAL SHEETS	SHEET NO.
599	(83MFT & 103MFT)W	ROCK ISLAND	340	175
CONTRACT NO. 64H11				
FED. ROAD DIST. NO. ILLINOIS FED. AID PROJECT				