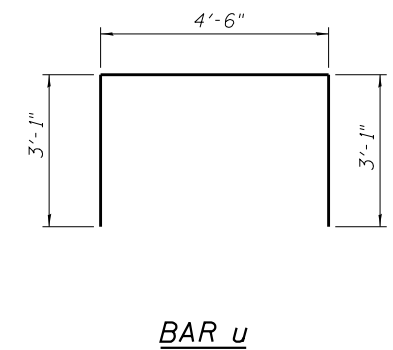
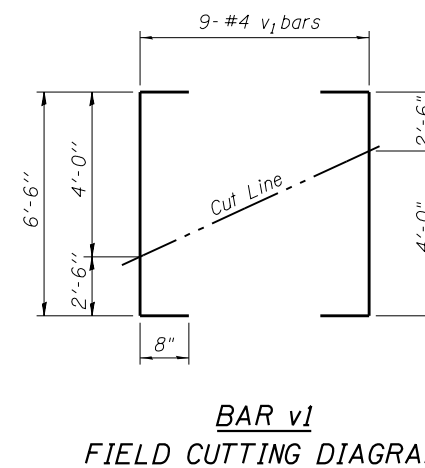
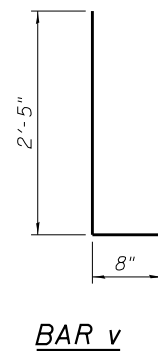
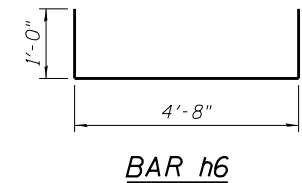
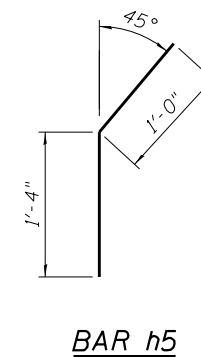
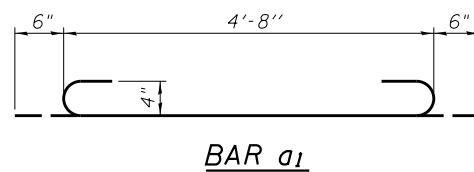


BILL OF MATERIAL
(For Information Only)

Bar	No.	Size	Length	Shape
a1	18	#4	5'-8"	
a2	18	#4	4'-8"	
h	10	#4	13'-3"	
h1	4	#5	8'-9"	
h2	4	#5	2'-10"	
h3	2	#5	13'-3"	
h4	2	#5	8'-9"	
h5	8	#5	2'-4"	
h6	3	#5	6'-8"	
u	4	#5	10'-8"	
v	25	#4	3'-1"	
v1	9	#4	7'-10"	
Description		Unit	Quantity	
Concrete Box Culverts		Cu. Yd.	3.6	
Reinforcement Bars		Pound	500	



FILE NAME = W:\Projects\2010\100120 PTB 157\25\cadd\Structural\Dgn\W0 #3 IL 92 Culverts\Station812+19.00\Final Submittal 13.0320\812+19.00-64H1-003-Drop Box Detail.dgn

WBK WILLS BURKE KELSEY ASSOCIATES LTD.
116 West Main Street, Suite 201
St. Charles, Illinois 60174

USER NAME = hferstl	DESIGNED - HLF	REVISED -
PLOT SCALE =	CHECKED - DLS	REVISED -
PLOT DATE = 3/20/2013	DRAWN - HLF	REVISED -
	CHECKED - DLS	REVISED -

STATE OF ILLINOIS
DEPARTMENT OF TRANSPORTATION

BOX CULVERT END SECTION WITH DROP BOX DETAILS
STA. 812 + 19.00 RT.

SHEET NO. 3 OF 4 SHEETS

F.A.P. RTE.	SECTION	COUNTY	TOTAL SHEETS	SHEET NO.
599	(83MFT & 103MFT)W	ROCK ISLAND	340	136
FED. ROAD DIST. NO.			ILLINOIS FED. AID PROJECT	
			CONTRACT NO. 64H11	