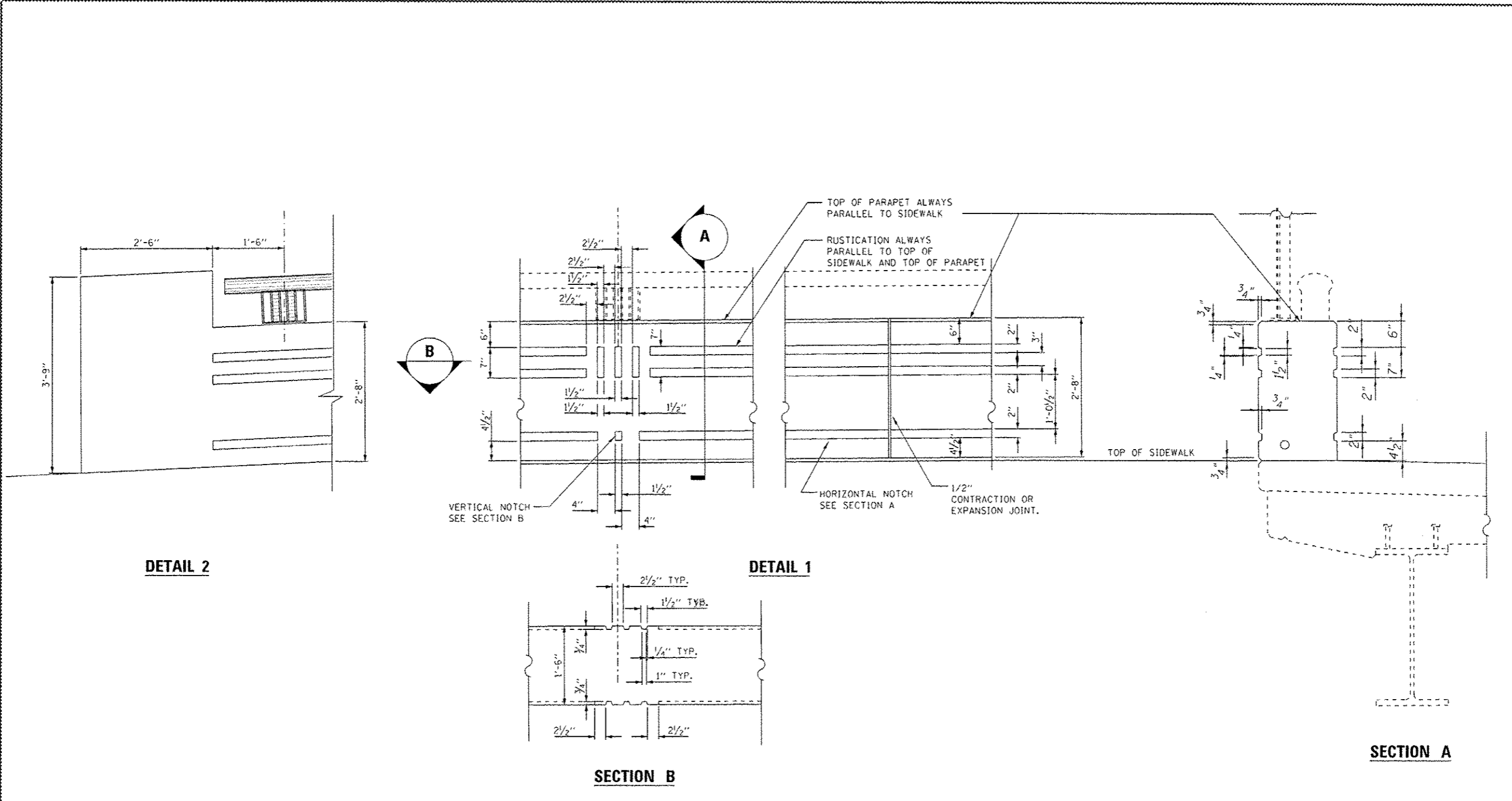


FILE PATH : \\192.168.0.125\proj\1\1\192.168.0.125\CONTRACTOR\Documents\01_Amer.Gov\Transp\Structure\2013\2013\RD\Roadway\Structural\Sheet\0162W25-shr.Parapet_Detail.dgn



DETAIL 2

DETAIL 1

SECTION B

SECTION A

NOTES:

1. FOR BRIDGE FENCE RAILING (SPECIAL) LAYOUT AND POST SPACING, SEE SHEET S1-21.
2. FOR BRIDGE FENCE RAILING (SPECIAL) DETAILS, SEE SHEET S1-21A.
3. FOR DECORATIVE RAILING PARAPET MOUNTED (CHICAGO RAIL) DETAILS, SEE SHEET S1-20.
4. FOR LOCATION OF LIGHT POLE AND TRAFFIC SIGNALS ON BRIDGE SEE SHEET S1-17, ELECTRICAL AND ITS PLANS.
5. THE REVEAL ON THE BRIDGE PARAPET - CHICAGO WALL WILL NOT BE PAID SEPARATELY AND SHALL BE INCLUDED IN THE COST OF THE PAY ITEM "CONCRETE STRUCTURES". SHOP DRAWINGS SHALL BE SUBMITTED INCLUDING LAYOUT OF THE CHICAGO WALL PATTERN, CHICAGO RAIL, FENCE AND LIGHT POLES.



D16W25-shr.Parapet_Detail.dgn	DESIGNED - MR	REVISED - / 07/19/2013 MR
USER NAME = rristovskan	DRAWN - MR	REVISED -
PLOT SCALE = 1/8" = 1' in.	CHECKED - GG	REVISED -
PLOT DATE = 7/16/2013	DATE - 6/17/2013	REVISED -

STATE OF ILLINOIS
DEPARTMENT OF TRANSPORTATION

ROADWAY DETAILS
BRIDGE PARAPET

SCALE: SHEET 9 OF 9 SHEETS STA. TO STA.

F.A.I. RTE.	SECTION	COUNTY	TOTAL SHEETS	SHEET NO.
90/94/290	2013-007R	COOK	317	269F
CONTRACT NO. 60W25			ILLINOIS FED. AID PROJECT	