

STATE OF ILLINOIS  
DEPARTMENT OF TRANSPORTATION

F.A.P. RTE.	SECTION	COUNTY	TOTAL SHEETS	SHEET NO.
726	115PP-1	Johnson	5	1
		ILLINOIS	CONTRACT NO. 78B73	

D99-084-25



FOR INDEX OF SHEETS, SEE SHEET NO. 3

**TRAFFIC DATA - 2023 ADT**

1,200 WITH 8.5% TRUCKS

**TOWNSHIP**

CACHE

**PROPOSED  
HIGHWAY PLANS**

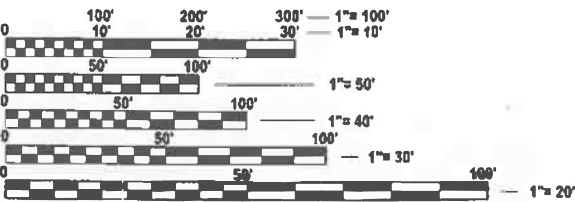
FAP ROUTE 726 (IL 37)  
SECTION 115PP-1

PAVEMENT PATCHING  
JOHNSON COUNTY

C-99-117-25

DESIGN DESIGNATION: N/A

POSTED SPEEDS: 55 MPH AND 40 MPH

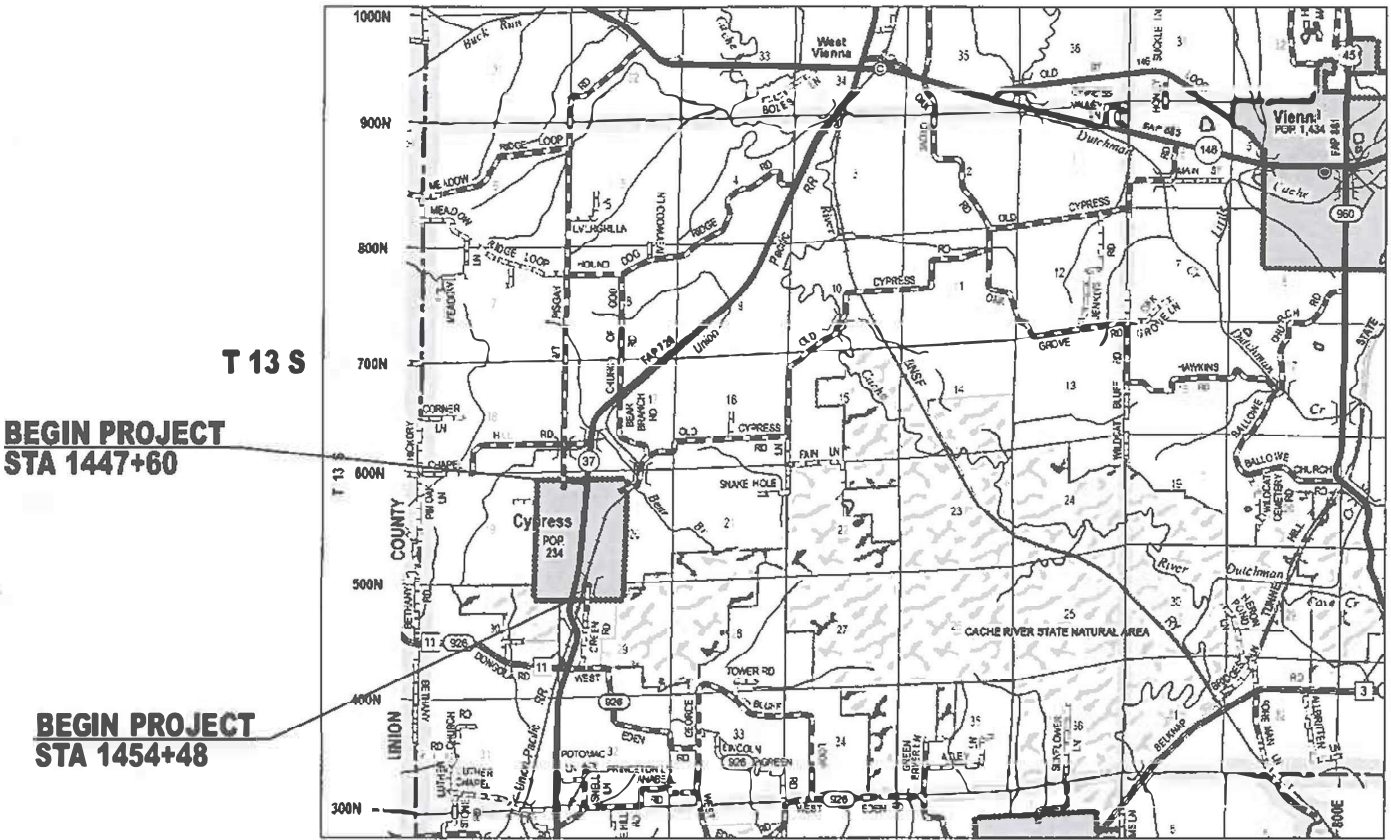


FULL SIZE PLANS HAVE BEEN PREPARED USING STANDARD  
ENGINEERING SCALES. REDUCED SIZED PLANS WILL NOT  
CONFORM TO STANDARD SCALES. IN MAKING MEASUREMENTS  
ON REDUCED PLANS, THE ABOVE SCALES MAY BE USED.

J.U.L.I.E.  
JOINT UTILITY LOCATION INFORMATION FOR EXCAVATION  
1-800-892-0123  
OR 811

PROJECT ENGINEER      NATHAN TAYLOR

CONTRACT NO. 78B73



R 2 E

GROSS LENGTH = 698 FT. = 0.13 MILE  
NET LENGTH = 698 FT. = 0.13 MILE

STATE OF ILLINOIS  
DEPARTMENT OF TRANSPORTATION

SUBMITTED June 6, 2025  
John R. Taylor REGIONAL ENGINEER

June 27, 2025  
Scott E. Taylor ENGINEER OF DESIGN AND ENVIRONMENT

June 27, 2025  
John R. Taylor DIRECTOR OF HIGHWAYS PROJECT IMPLEMENTATION

PRINTED BY THE AUTHORITY  
OF THE STATE OF ILLINOIS

Prepared By: Susan Re  
DISTRICT STUDIES & PLANS ENGINEER

Examined By: \_\_\_\_\_  
DISTRICT LAND ACQUISITION ENGINEER

Examined By: Carmie Nelson sr  
DISTRICT PROGRAM DEVELOPMENT ENGINEER

Examined By: ZCS  
DISTRICT OPERATIONS ENGINEER

Examined By: \_\_\_\_\_  
DISTRICT PROJECT IMPLEMENTATION ENGINEER

Examined By: Bernadette  
DISTRICT CONSTRUCTION ENGINEER

Examined By: Aamir Hafeez  
DISTRICT MATERIALS ENGINEER

USER NAME    ■ Nathan.Taylor	DESIGNED    -	REVISED    -
	DRAWN       -	REVISED    -
	CHECKED    -	REVISED    -
PLOT DATE    ■ 6/4/2025	DATE        -	REVISED    -

**STATE OF ILLINOIS  
DEPARTMENT OF TRANSPORTATION**

## SIGNATURE SHEET

<b>SIGNATURE SHEET</b>					F&P RTE.	SECTION	COUNTY	TOTAL SHEETS	SHEET NO.
					726	115PP-1	Johnson	5	2
SCALE:	SHEET 2	OF 5	SHEETS	STA.	TO STA.				
					CONTRACT NO. 78B73				

# GENERAL NOTES

COMMITMENTS: NONE

# INDEX OF SHEETS

SHEET NO	DESCRIPTION
1	COVER SHEET
2	SIGNATURE SHEET
3	GENERAL NOTES, INDEX OF SHEETS, HIGHWAY STANDARDS, LIST OF COMMITMENTS
4	SUMMARY OF QUANTITIES
5	SCHEDULES

# HIGHWAY STANDARDS

- 000001-08 STANDARD SYMBOLS, ABBREVIATIONS AND PATTERNS
- 001001-02 AREAS OF REINFORCEMENT BARS
- 001006 DECIMAL OF AN INCH AND OF A FOOT
- 420001-10 PAVEMENT JOINTS
- 420701-03 PAVEMENT WELDED WIRE REINFORCEMENT
- 442201-03 CLASS C & D PATCHES
- 701001-02 OFF-ROAD OPERATIONS, 2L, 2W, MORE THAN 15 FT AWAY
- 701006-05 OFF-ROAD OPERATIONS, 2L, 2W, 15 FT TO 24 IN FROM PAVEMENT EDGE
- 701201-05 LANE CLOSURE, 2L, 2W, DAY ONLY, FOR SPEEDS 45 MPH OR MORE
- 701336-07 LANE CLOSURE, 2L, 2W, WORK AREAS IN SERIES, FOR SPEEDS 45MPH OR MORE
- 701501-06 URBAN LANE CLOSURE, 2L, 2W, UNDIVIDED
- 701901-10 TRAFFIC CONTROL DEVICES

REV - MS

MODEL: INDEX OF SHEETS GENERAL NOTES (Sheet)  
FILE NAME: c:\pwworksp\wstaylor\ordid112482\0078873-ShB-Index\_GenNotes.dgn

	USER NAME = Nathan.Taylor	DESIGNED -	REVISED -	STATE OF ILLINOIS DEPARTMENT OF TRANSPORTATION	INDEX OF SHEETS, GENERAL NOTES, HIGHWAY STANDARDS, AND LIST OF COMMITMENTS		F.A.P RTE.	SECTION	COUNTY	TOTAL SHEETS	SHEET NO.
		DRAWN -	REVISED -				726	115PP-1	Johnson	5	3
		CHECKED -	REVISED -				CONTRACT NO. 78B73				
	PLOT DATE = 6/6/2025	DATE -	REVISED -		SCALE:	SHEET 3 OF 5 SHEETS	STA.	TO STA.	ILLINOIS   FED. AID PROJECT		

SUMMARY OF QUANTITIES

CODE NUMBER	ITEM DESCRIPTION	UNIT	TOTAL QUANTITY	COUNTY:
				JOHNSON CO
				ROUTE:
				FAP 726
				FUNDING:
				100% STATE
				LOCATION:
				RURAL
				TOTAL ROADWAY
				0005
44200050	WELDED WIRE REINFORCEMENT	SQ YD	295	295
44201373	CLASS C PATCHES, TYPE I, 12 INCH	SQ YD	4	4
44201377	CLASS C PATCHES, TYPE II, 12 INCH	SQ YD	110	110
44201381	CLASS C PATCHES, TYPE III, 12 INCH	SQ YD	15	15
44213204	TIE BARS 3/4"	EACH	155	155
67100100	MOBILIZATION	L SUM	1	1
70100450	TRAFFIC CONTROL AND PROTECTION, STANDARD 701201	L SUM	1	1
70100600	TRAFFIC CONTROL AND PROTECTION, STANDARD 701336	L SUM	1	1
70102620	TRAFFIC CONTROL AND PROTECTION, STANDARD 701501	L SUM	1	1
70107025	CHANGEABLE MESSAGE SIGN	CAL DA	28	28
X4421382	CLASS C PATCHES, TYPE IV, 12 INCH (SPECIAL)	SQ YD	295	295

MODEL: SUMMARY OF QUANTITIES [Sheet]  
FILE NAME: c:\pwworking\tdtaylor\ordr1124828\0978873-ShtC-S90.dgn

REV - MS

	USER NAME = Nathan.Taylor	DESIGNED -	REVISED -	STATE OF ILLINOIS DEPARTMENT OF TRANSPORTATION	SUMMARY OF QUANTITIES			FAP RTE.	SECTION	COUNTY	TOTAL SHEETS	SHEET NO.
		DRAWN -	REVISED -					726	115PP-1	Johnson	5	4
		CHECKED -	REVISED -					CONTRACT NO. 78B73				
	PLOT DATE = 6/4/2025	DATE -	REVISED -		SCALE:	SHEET 4	OF 5 SHEETS	STA.	TO STA.	ILLINOIS   FED. AID PROJECT		

PATCHING SCHEDULE

FAP 726 (IL 37) JOHNSON COUNTY										
STATION	DIRECTION	LENGTH (FOOT)	WIDTH (FOOT)	AREA (SQ YD)	CLASS C PATCHES (TYPE I) 12 INCH	CLASS C PATCHES (TYPE II) 12 INCH	CLASS C PATCHES (TYPE III) 12 INCH	CLASS C PATCHES (TYPE IV) 12 INCH SPECIAL	WELDED WIRE REINFORCEMENT	TIE BARS 3/4"
		(INFO ONLY)			SQ YD	SQ YD	SQ YD	SQ YD	SQ YD	EACH
1447+60	NB	10	12	13.3		14				
1447+60	SB	10	12	13.3		14				
1448+02	NB	10	12	13.3		14				
1448+02	SB	10	12	13.3		14				
1450+46	NB	10	12	13.3		14				
1450+46	SB	10	12	13.3		14				
1450+75	NB	40	12	53.3				54	54	27
1450+95	SB	6	12	8.0		8				
1451+11	SB	6	12	8.0		8				
1451+67	NB	31	12	41.3				42	42	21
1452+26	NB	30	12	40.0				40	40	20
1452+99	NB	26	12	34.7				35	35	18
1453+45	NB	31	12	41.3				42	42	21
1451+48	NB	41	12	54.7				55	55	28
SUBTOTALS						100		268	268	135
SUBTOTAL GROWTH FACTOR					4	10	15	27	27	20
PROJECT TOTAL					4	110	15	295	295	155

MODEL: SCHEDULE OF QUANTITIES [Sheet]  
FILE NAME: c:\p\p\work\pw\tdot\td\p\m\m\1124828\0978B73-Shie-Schedules.dgn

	USER NAME = Nathan.Taylor	DESIGNED -	REVISED -	STATE OF ILLINOIS DEPARTMENT OF TRANSPORTATION	SCHEDULE OF QUANTITIES			F.A.P RTE.	SECTION	COUNTY	TOTAL SHEETS	SHEET NO.
		DRAWN -	REVISED -					726	115PP-1	Johnson	5	5
		CHECKED -	REVISED -					CONTRACT NO. 78B73				
	PLOT DATE = 6/16/2025	DATE -	REVISED -		SCALE:	SHEET 5	OF 5 SHEETS	STA.	TO STA.	ILLINOIS FED. AID PROJECT		