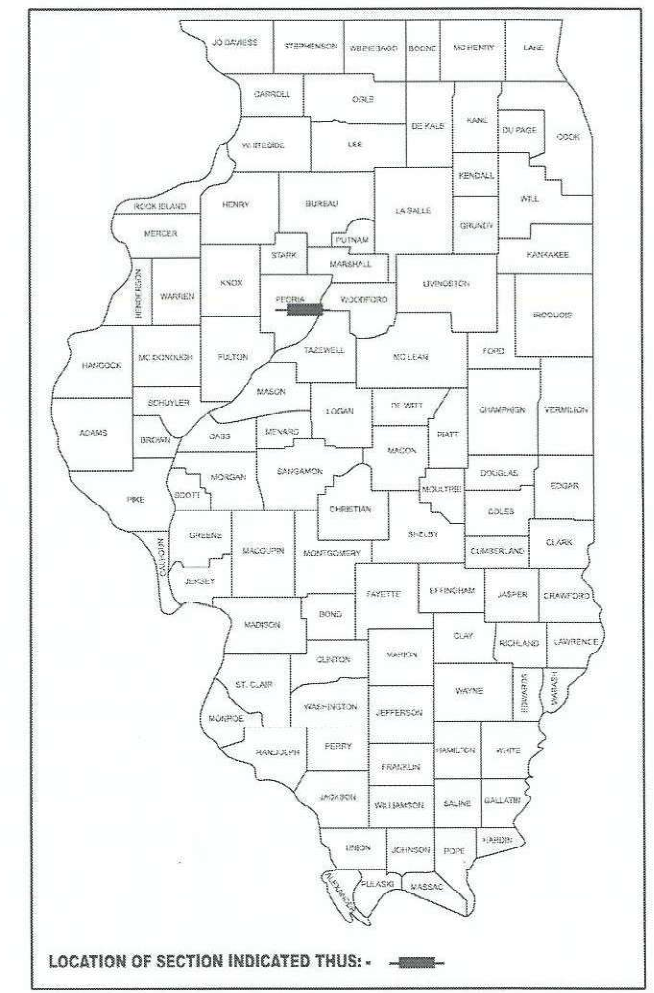


F.A.P. RTE.	SECTION	COUNTY	TOTAL SHEETS	SHEET NO.
671	11RS-6;GRS-3;10RS-9	PEORIA	27	1
		ILLINOIS	CONTRACT NO. 68J62	

D-94-086-24



INDEX OF SHEETS

08-01-2025 LETTING ITEM 033

- 1 COVER SHEET
- 2-3 GENERAL & JOB SPECIFIC NOTES
- 4-7 SUMMARY OF QUANTITIES
- 8-12 SCHEDULE OF QUANTITIES
- 13 LINE DIAGRAM
- 14 TYPICAL SECTIONS
- 15-19 PLAN SHEETS
- 20-21 TRAFFIC SIGNAL PLANS
- 22-27 DISTRICT CADD STANDARDS

HIGHWAY STANDARDS

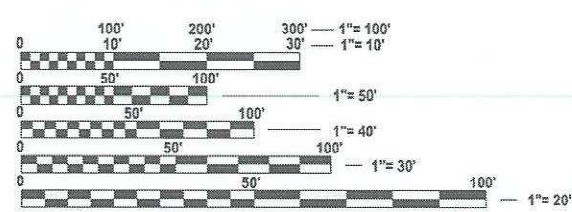
420001-10	701311-03
606001-08	701501-06
606301-04	701502-09
630001-13	701701-10
631011-10	701901-10
701201-05	780001-05
701301-04	781001-04

DISTRICT STANDARDS

- 602401
- 630101
- 635003
- 780001

DESIGN DESIGNATION

IL 8 (FARMINGTON RD.)
MINOR ARTERIAL
ADT = 12,200 (2023)
MU = 0.6% (2023)
SU = 2.5% (2023)



FULL SIZE PLANS HAVE BEEN PREPARED USING STANDARD ENGINEERING SCALES. REDUCED SIZED PLANS WILL NOT CONFORM TO STANDARD SCALES. IN MAKING MEASUREMENTS ON REDUCED PLANS, THE ABOVE SCALES MAY BE USED.

J.U.L.I.E.
JOINT UTILITY LOCATION INFORMATION FOR EXCAVATION
1-800-892-0123
OR 811

PROJECT ENGINEER: REBECCA MARRUFFO 309-671-3394
PROJECT MANAGER: RAYMOND SAMARA 309-369-7100
CATALOG NO. 036569-00D
CONTRACT NO. 68J62

STATE OF ILLINOIS
DEPARTMENT OF TRANSPORTATION

PROPOSED
HIGHWAY PLANS

FAU ROUTE 6658 / FAP ROUTE 671(IL 8/FARMINGTON RD.)
SECTION 11RS-6;GRS-3;10RS-9
3P RESURFACING
PEORIA COUNTY

C-94-114-24

PROJECT ENDS
STA. 89+18



STA. EQUATION:
STA. 104+84 (BK)
= STA. 5+15 (AH)

PROJECT BEGINS
STA. 99+98

PROJECT DESCRIPTION:
RESURFACING ON IL 8 (FARMINGTON RD.)
FROM MAIN STREET TO E. OF KICKAPOO CREEK
RD. PROJECT INCLUDES GUARDRAIL, PAVEMENT
MARKING, AND RESURFACING S.N. 072-0056.

STATE OF ILLINOIS
DEPARTMENT OF TRANSPORTATION

SUBMITTED May 22 2025
Kenal A. Garnett, P.E. REGIONAL ENGINEER

JUNE 27 2025
Scott A. Etkin ENGINEER OF DESIGN AND ENVIRONMENT

JUNE 27 2025
John J. [Signature] DIRECTOR OF HIGHWAYS PROJECT IMPLEMENTATION

PRINTED BY THE AUTHORITY
OF THE STATE OF ILLINOIS

GROSS LENGTH = 8889 FT. = 1.680 MILES
NET LENGTH = 8739 FT. = 1.66 MILES

MODEL: General Notes [Sheet]
FILE NAME: c:\p\p_work\p\wid\id\greendm\id1089745\ID468xxx-sh-GenNote.dgn

GENERAL NOTES

107.00 COMMITMENTS

Commitments are not to be altered without the written approval of all parties to which the commitment was made.

No commitments have been made on this project.

107.09A CONSECUTIVE SIDE STREET (ROAD) CLOSURE - PROHIBITED

1. No two consecutive side streets (roads) may be closed at the same time during construction. The Contractor must alternate streets (roads).
2. Adjacent sideroads will not be closed simultaneously. BLR Standard 21 shall be used for all local road closures without any entrances within the closed area. BLR Standard 22 can be used where it is necessary to allow local traffic access.

204.00 ENVIRONMENTAL REVIEWS

Prior to the use of any proposed borrow areas, use areas (temporary access roads, detours, run-arounds, etc.) and/or waste areas, the Contractor shall file the required environmental resource request surveys according to Section 107.22 of the Standard Specifications. These surveys are required in order for the Department to conduct cultural and biological resource surveys for the proposed site.

The required environmental resource documentation shall include the following:

- * BDE Form 2289 (Borrow Site Review)
- * BDE Form 2290 (Waste/Use Area Review)
- * A location map showing the size limits and location of the use area
- * Color photographs depicting the use area
- * Borrow Area Entry Agreement form - D4 PI0101

Prior to any waste materials being removed from the construction site the required environmental resource surveys shall be obtained and filed by the Contractor. Excess waste products removed from the construction site shall be disposed of as required in Section 202.03 of the Standard Specifications.

Any protruding metal bars shall be removed prior to the disposal of broken concrete at approved disposal sites.

Please note that a minimum of four weeks shall be allowed for the District to obtain the required waste site environmental clearances and six weeks for the required borrow site environmental clearances.

351.08 AGGREGATE FOR DRIVEWAY REPLACEMENT

The material used for construction of permanent aggregate driveways shall be gravel or crushed stone, as directed by the Engineer, to replace in kind the existing aggregate driveways.

No additional compensation shall be provided for this requirement but shall be considered as included in the cost of the pay item for the aggregate as specified on the plans.

406.01 BRIDGE OVERLAY NOTIFICATION

After placement of the bridge deck overlay, the Resident Engineer shall notify the District Bridge Maintenance Engineer of the "as constructed" milling depth and overlay thickness for updating the Illinois Highway Information System.

406.05 POLYMERIZED BITUMINOUS MATERIALS (TACK COAT) RATES

Surface Type	Residual Rate
Milled (HMA or PCC)	0.08 lb / sq ft
Existing Pavement	0.08 lb / sq ft
Fog Coat (between lifts)	0.08 lb / sq ft

406.18

BUTT JOINT CUTTING TIME RESTRICTION

Butt joints shall not be milled more than three (3) days prior to placement of the HMA surface course.

406.19

PAVING SURFACE COURSE

Continuous paving operations on the main roadway shall be maintained at all times during the construction of the hot-mix asphalt surface. No interruptions for side roads, entrances, turn lanes, etc. will be allowed.

503.00

CROSSING EXISTING STRUCTURES WITH EQUIPMENT

SN 072-0056 may be crossed with the empty MTD with the maximum gross weight restriction of 40 tons. Any structures not listed above shall be verified by the resident prior to beginning work.

606.00

MEDIAN ISLAND NOSES

- When constructing median and island noses the following criteria should be followed:
- * Barrier curb shall be used to construct noses when the mdeian or island surrounds a mast arm or other non-breakaway foundation.
 - * Ramped noses shall be used on medians or islands with breakaway posts.

701.01

ADDITIONAL SUPPLEMENTAL TRAFFIC CONTROL

The Department reserves the right at any time to add additional Traffic Control Systems or devices within the active contract limits, by means of an additional contract. All terms of Article 105.08 of the Standard Specifications shall be followed by each Contractor.

780.00

NO PASSING ZONE VERIFICATION

The resident shall contact Operations to verify the location of no passing zones prior to placement of centerline striping.

	USER NAME = david.green	DESIGNED -	REVISED -	STATE OF ILLINOIS DEPARTMENT OF TRANSPORTATION	GENERAL NOTES			F.A.P RTE.	SECTION	COUNTY	TOTAL SHEETS	SHEET NO.
		DRAWN -	REVISED -					671	11RS-6;GRS-3;10RS-9	PEORIA	27	2
		CHECKED -	REVISED -					CONTRACT NO. 68J62				
	PLOT DATE = 5/15/2025	DATE -	REVISED -		SCALE:	SHEET 1	OF 2	SHEETS	STA.	TO STA.	ILLINOIS FED. AID PROJECT	

MIX REQUIREMENTS:

The following mixture requirements are applicable for this project:							
Location(s):	Mainline	Mainline	Mainline				
Mixture Use(s):	Polymer Surface 1.75"	Polymer Level Binder 1"	Incidental Surface				
AC/PG:	SBS or SBR 70-28	SBS or SBR 70-22	PG 58-28				
Design Air Voids:	4.0% @ N=50	4.0% @ N=50	4.0% @ N=50				
Mixture Composition: (Mixture Gradation)	IL 9.5	IL 4.75	IL 9.5				
Friction Aggregate:	Mix D	N/A	Mix C				
Quality Management Program:	PFP	PFP	QCQA				
MTD:	YES	YES	NO				
Note: 1) Individual lift thickness of each mix type will be no less than 3 times nominal maximum aggregate size and no more than 6 times nominal maximum aggregate size, unless otherwise approved by the Engineer. 2) For design purposes, mixture weight for all mixes is determined to be 112.0 lb/s.y./in., unless otherwise noted. 3) Sublot sizes for PFP and QCP mixes will be 1000 tons, unless otherwise agreed to by the Engineer and the paving contractor.							

JOB SPECIFIC NOTES

1. Drop offs between traffic lanes during the milling and overlay operations shall be in accordance with article 701.07 of the Standard Specifications.
2. Proposed aggregate shoulders are due to low spots in existing aggregate.
3. Vertical holes shall be constructed in the proposed island pavement. The holes shall be 24 inches in diameter or 24 inches square and they shall be free of any obstruction, except earth, for a depth of 5 feet as directed by the Engineer. Any holes not used for the placement of signs shall be filled and compacted flush with the top of the island pavement. The top 3 inches of said compacted fill shall consist of a hot-mix asphalt mixture. All holes in which the sign posts are installed at the same time of this contract shall be similarly filled.

This work, including any required pavement removal necessary to construct the sign post holes, will not be paid for separately but shall be included in the contract unit price per Square Foot for ISLAND PAVEMENT REMOVAL AND REPLACEMENT.

4. When flaggers are utilized within the intersections during any construction stage, signals shall be switched to flashing red to minimize confusion to motorists, and the Engineer shall be notified.

STATUS OF UTILITIES:

No utility conflicts have been found within the project limits. Utilities located within the ROW consist of:

COMPANY	CONTACT PERSON	CONTACT INFO
Ameren Illinois – Electric	Jon Reick	309-258-3901 jreick@ameren.com
Ameren Illinois – Gas	Zach Wilson	309-645-4458 zwilson@ameren.com
ATT – Distribution	Bill Conover	309-550-8043 wc2473@att.com
I3 Broadband		engineering@i3broadband.net
Illinois American Water	Charles Barton	309-258-9151 charles.barton@amwater.com
Bluebird	Jeremy Carr	309-713-6442 jeremy.carr@bluebirdnetwork.com
Greater Peoria Sanitary		engineering@gpsd.org
Pleasant Valley Water District	Joe Loftus	309-645-0707 pvpwd@comcast.net
Stratus Network	Tyler Evans	309-417-3291 tevens@stratusnet.com

MODEL: Detail [Sheet] - 1
FILE NAME: c:\p\work\pwt\tdlgreendm\1089745\ID468xxx-sh-Details.dgn

	USER NAME = david.green	DESIGNED -	REVISED -	STATE OF ILLINOIS DEPARTMENT OF TRANSPORTATION	MIX REQUIREMENTS, JOB SPECIFIC NOTES, & STATUS OF UTILITIES				F.A.P RTE.	SECTION		COUNTY	TOTAL SHEETS	SHEET NO.	
		DRAWN -	REVISED -						671	11RS-6;GRS-3;10RS-9		PEORIA	27	3	
		CHECKED -	REVISED -						CONTRACT NO. 68J62						
	PLOT DATE = 5/22/2025	DATE -	REVISED -		SCALE:				SHEET 2	OF 2	SHEETS	STA.	TO STA.		
							ILLINOIS FED. AID PROJECT								

MODEL: SOQ (Sheet)-1
FILE NAME: c:\p\work\pwtolgreen\nd1089745\ID468xx-sh-SOQ.dgn

				CONSTRUCTION CODE			
				PEORIA COUNTY 100% STATE	PEORIA COUNTY 93.3% STATE / 6.7% W. PEORIA	PEORIA COUNTY 93.3% STATE / 6.7% PEORIA	PEORIA COUNTY 100% STATE
CODE NO.	ITEM	UNIT	TOTAL QUANTITY	FRONTAGE ROAD	TRAFFIC SIGNALS	TRAFFIC SIGNALS	TRAFFIC SIGNALS
				0005	0021	0021	0021
				URBAN	URBAN	URBAN	URBAN
40200100	AGGREGATE SURFACE COURSE, TYPE A	TON	64	64			
40600295	POLYMERIZED BITUMINOUS MATERIALS (TACK COAT)	POUND	68250	68250			
40600405	MATERIAL TRANSFER DEVICE	TON	5362	5362			
40600982	HOT-MIX ASPHALT SURFACE REMOVAL - BUTT JOINT	SQ YD	850	850			
40600990	TEMPORARY RAMP	SQ YD	1004	1004			
40603200	POLYMERIZED HOT-MIX ASPHALT BINDER COURSE, IL-4.75, N50	TON	1899	1899			
40604160	POLYMERIZED HOT-MIX ASPHALT SURFACE COURSE, IL-9.5, MIX "D", N50	TON	3464	3464			
40800050	INCIDENTAL HOT-MIX ASPHALT SURFACING	TON	979	979			
44000156	HOT-MIX ASPHALT SURFACE REMOVAL, 1 3/4"	SQ YD	940	940			
44000160	HOT-MIX ASPHALT SURFACE REMOVAL, 2 3/4"	SQ YD	39370	39370			
48101200	AGGREGATE SHOULDERS, TYPE B	TON	128	128			
60260100	INLETS TO BE ADJUSTED	EACH	1	1			
* 63000001	STEEL PLATE BEAM GUARDRAIL, TYPE A, 6 FOOT POSTS	FOOT	363	363			
* 63100045	TRAFFIC BARRIER TERMINAL, TYPE 2	EACH	1	1			

*= SPECIALTY ITEM

	USER NAME = david.green	DESIGNED -	REVISED -	STATE OF ILLINOIS DEPARTMENT OF TRANSPORTATION	SUMMARY OF QUANTITIES			F.A.P RTE.	SECTION	COUNTY	TOTAL SHEETS	SHEET NO.
		DRAWN -	REVISED -					671	11RS-6;GRS-3;10RS-9	PEORIA	27	4
		CHECKED -	REVISED -					CONTRACT NO. 68J62				
	PLOT DATE = 5/22/2025	DATE -	REVISED -		SCALE:	SHEET 1	OF 4	SHEETS	STA.	TO STA.	ILLINOIS FED. AID PROJECT	

MODEL: SOQ (Sheet) - 2
FILE NAME: c:\p\work\pwt\tdlgreen\m1099745\ID468xxx-sh-SOQ.dgn

				CONSTRUCTION CODE			
				PEORIA COUNTY 100% STATE	PEORIA COUNTY 93.3% STATE / 6.7% W. PEORIA	PEORIA COUNTY 93.3% STATE / 6.7% PEORIA	PEORIA COUNTY 100% STATE
CODE NO.	ITEM	UNIT	TOTAL QUANTITY	FRONTAGE ROAD	TRAFFIC SIGNALS	TRAFFIC SIGNALS	TRAFFIC SIGNALS
				0005	0021	0021	0021
				URBAN	URBAN	URBAN	URBAN
* 63100167	TRAFFIC BARRIER TERMINAL, TYPE 1 (SPECIAL) TANGENT	EACH	1	1			
63200310	GUARDRAIL REMOVAL	FOOT	439	439			
67100100	MOBILIZATION	L SUM	1	1			
70100450	TRAFFIC CONTROL AND PROTECTION, STANDARD 701201	L SUM	1	1			
70102620	TRAFFIC CONTROL AND PROTECTION, STANDARD 701501	L SUM	1	1			
70102622	TRAFFIC CONTROL AND PROTECTION, STANDARD 701502	L SUM	1	1			
70102635	TRAFFIC CONTROL AND PROTECTION, STANDARD 701701	L SUM	1	1			
70107025	CHANGEABLE MESSAGE SIGN	CAL DA	100	100			
70300100	SHORT TERM PAVEMENT MARKING	FOOT	4706	4706			
70300150	SHORT TERM PAVEMENT MARKING REMOVAL	SQ FT	618	618			
* 72501000	TERMINAL MARKER - DIRECT APPLIED	EACH	1	1			
* 78009000	MODIFIED URETHANE PAVEMENT MARKING - LETTERS AND SYMBOLS	SQ FT	762	762			
* 78009004	MODIFIED URETHANE PAVEMENT MARKING - LINE 4"	FOOT	22897	22897			
* 78009006	MODIFIED URETHANE PAVEMENT MARKING - LINE 6"	FOOT	17420	17420			

*= SPECIALTY ITEM

	USER NAME = david.green	DESIGNED -	REVISED -	STATE OF ILLINOIS DEPARTMENT OF TRANSPORTATION	SUMMARY OF QUANTITIES			F.A.P RTE.	SECTION	COUNTY	TOTAL SHEETS	SHEET NO.
		DRAWN -	REVISED -					671	11RS-6;GRS-3;10RS-9	PEORIA	27	5
		CHECKED -	REVISED -					CONTRACT NO. 68J62				
	PLOT DATE = 5/22/2025	DATE -	REVISED -		SCALE:	SHEET 2	OF 4	SHEETS	STA.	TO STA.	ILLINOIS FED. AID PROJECT	

MODEL: SOQ (Sheet) - 3
FILE NAME: c:\p\work\pwtolgreen\mtd1089745\ID468xx-xth-SOQ.dgn

				CONSTRUCTION CODE			
				PEORIA COUNTY 100% STATE	PEORIA COUNTY 93.3% STATE / 6.7% W. PEORIA	PEORIA COUNTY 93.3% STATE / 6.7% PEORIA	PEORIA COUNTY 100% STATE
CODE NO.	ITEM	UNIT	TOTAL QUANTITY	FRONTAGE ROAD	TRAFFIC SIGNALS	TRAFFIC SIGNALS	TRAFFIC SIGNALS
				0005	0021	0021	0021
				URBAN	URBAN	URBAN	URBAN
* 78009008	MODIFIED URETHANE PAVEMENT MARKING - LINE 8"	FOOT	2226	2226			
* 78009012	MODIFIED URETHANE PAVEMENT MARKING - LINE 12"	FOOT	1204	1204			
* 78009024	MODIFIED URETHANE PAVEMENT MARKING - LINE 24"	FOOT	561	561			
* 78011000	GROOVING FOR RECESSED PAVEMENT MARKING, LETTERS AND SYMBOLS	SQ FT	762	762			
* 78011025	GROOVING FOR RECESSED PAVEMENT MARKING 5"	FOOT	22897	22897			
* 78011035	GROOVING FOR RECESSED PAVEMENT MARKING 7"	FOOT	17420	17420			
* 78011045	GROOVING FOR RECESSED PAVEMENT MARKING 9"	FOOT	2226	2226			
* 78011065	GROOVING FOR RECESSED PAVEMENT MARKING 13"	FOOT	1204	1204			
* 78011125	GROOVING FOR RECESSED PAVEMENT MARKING 25"	FOOT	561	561			
* 78100100	RAISED REFLECTIVE PAVEMENT MARKER	EACH	360	360			
78300200	RAISED REFLECTIVE PAVEMENT MARKER REMOVAL	EACH	374	374			
78300202	PAVEMENT MARKING REMOVAL - WATER BLASTING	SQ FT	444	444			
X4400196	HOT-MIX ASPHALT SURFACE REMOVAL (SPECIAL)	SQ YD	993	993			
X4402815	ISLAND PAVEMENT REMOVAL AND REPLACEMENT	SQ FT	60	60			

*= SPECIALTY ITEM

USER NAME = david.green	DESIGNED -	REVISED -	STATE OF ILLINOIS DEPARTMENT OF TRANSPORTATION	SUMMARY OF QUANTITIES			F.A.P RTE.	SECTION	COUNTY	TOTAL SHEETS	SHEET NO.
	DRAWN -	REVISED -					671	11RS-6;GRS-3;10RS-9	PEORIA	27	6
	CHECKED -	REVISED -		SCALE: SHEET 3 OF 4 SHEETS STA. TO STA.			CONTRACT NO. 68J62				
	PLOT DATE = 5/22/2025	DATE -	REVISED -				ILLINOIS FED. AID PROJECT				

MODEL: SOQ (Sheet) - 4
FILE NAME: c:\p\work\pwtolgreendm\1089745\468xxx-sh-SOQ.dgn

				CONSTRUCTION CODE			
				PEORIA COUNTY 100% STATE	PEORIA COUNTY 93.3% STATE / 6.7% W. PEORIA	PEORIA COUNTY 93.3% STATE / 6.7% PEORIA	PEORIA COUNTY 100% STATE
CODE NO.	ITEM	UNIT	TOTAL QUANTITY	FRONTAGE ROAD	TRAFFIC SIGNALS	TRAFFIC SIGNALS	TRAFFIC SIGNALS
				0005	0021	0021	0021
				URBAN	URBAN	URBAN	URBAN
X6350204	LINEAR DELINEATOR PANELS, 4 INCH	EACH	5	5			
X8891011	VIDEO VEHICLE DETECTION SYSTEM, 3 CAMERA	EACH	3		1	1	1
XZ013798	CONSTRUCTION STATION LAYOUT	L SUM	1	1			
Z0001002	GUARDRAIL AGGREGATE EROSION CONTROL	TON	60	60			
Ø Z0076604	TRAINEES - TRAINING PROGRAM GRADUATE	HOUR	1,000	1,000			
Z0004556	HOT-MIX ASPHALT SURFACE REMOVAL (DECK)	SQ YD	447	447			

Ø 0042 *= SPECIALTY ITEM

	USER NAME = david.green	DESIGNED -	REVISED -	STATE OF ILLINOIS DEPARTMENT OF TRANSPORTATION	SUMMARY OF QUANTITIES			F.A.P RTE.	SECTION	COUNTY	TOTAL SHEETS	SHEET NO.
		DRAWN -	REVISED -					671	11RS-6;GRS-3;10RS-9	PEORIA	27	7
		CHECKED -	REVISED -					CONTRACT NO. 68J62				
	PLOT DATE = 5/22/2025	DATE -	REVISED -		SCALE:	SHEET 4	OF 4	SHEETS	STA.	TO STA.	ILLINOIS FED. AID PROJECT	

MODEL: Schedule [Sheet] - 1
FILE NAME: c:\paw_work\paw\tdlgreendm\1099745\ID468xxx-sh-schedule.dgn

PAVEMENT SCHEDULE																			
LOCATION				LENGTH	WIDTH	AREA	HMA SURFACE REMOVAL - BUTT JOINT	TEMPORARY RAMP	POLY. HMA SURFACE COURSE, IL-9.5, MIX "D", N50		POLY. HMA BINDER COURSE, IL- 4.75, N50	POLY. BIT. MATERIALS (TACK COAT)		HMA SURFACE REMOVAL (SPECIAL)	HMA SURFACE REMOVAL, 2 3/4"	HMA SURFACE REMOVAL, 1 3/4"	HMA SURFACE REMOVAL (DECK)	MATERIAL TRANSFER DEVICE	INCIDENTAL HMA SURFACING
									1.75"	JT	1.0"	0.08 LB/SQ FT	JT	JT		1.75"			
				FOOT	FOOT	SQ YD	SQ. YD.	SQ. YD.	TON	TON	TON	POUND	POUND	SQ. YD.	SQ. YD.	SQ. YD.	SQ. YD.	TON	TON
IL8 / W. FARMINGTON RD																			
STA.	99+98.0	TO	101+23.0	125.0	Varies	1132.2	130.7	152.8	111.0	1.4	63.4	1630.3	19.2	13.9	1132.2			175.7	
STA.	101+23.0	TO	102+75.0	152.0	55.0	928.9			91.0	1.7	52.0	1337.6	23.3	16.9	928.9			144.7	
STA.	102+75.0	TO	103+93.0	118.0	Var. 55 to 41.5	993.2			97.3	1.3	55.6	1430.2	18.1	13.1	993.2			154.2	
STA.	103+93.0	TO	104+84.0	91.0	41.5	419.6			41.1	1.0	23.5	604.2	13.9	10.1	419.6			65.6	
STA. EQ: 104+84 (BK) = 5+15 (AH)																			
STA.	05+15.0	TO	19+88.0	1473.0	41.5	6792.2			665.6	16.0	380.4	9780.7	225.8	163.7	6792.2			1062.0	
STA.	19+88.0	TO	22+56.0	268.0	Var. 41.5 to 24	975.2			95.6	2.9	54.6	1404.3	41.1	29.8	975.2			153.1	
STA.	22+56.0	TO	31+09.0	853.0	24.0	2274.7			222.9	4.6	127.4	3275.5	65.4	47.4	2274.7			354.9	
STA.	31+09.0	TO	31+39.0	30.0	24.0	80.0			7.8	0.2	4.5	115.2	2.3	1.7	80.0			12.5	
STA.	31+39.0	TO	32+61.0	122.0	33.0	447.3			43.8	0.7		322.1	14.0	6.8			447.3	44.5	
STA.	32+61.0	TO	32+91.0	30.0	24.0	80.0			7.8	0.2	4.5	57.6	2.3	1.7	80.0			12.5	
STA.	32+91.0	TO	33+11.0	20.0	24.0	53.3			5.2	0.1	3.0	76.8	1.5	1.1	53.3			8.3	
STA.	33+11.0	TO	34+10.0	99.0	Var. 24 to 40	352.0			34.5	1.6	19.7	506.9	22.8	16.5	352.0			55.8	
STA.	34+10.0	TO	35+71.0	161.0	Var. 40 to 52	822.9			80.6	3.5	46.1	1185.0	49.4	35.8	822.9			130.2	
STA.	35+71.0	TO	38+88.0	317.0	52.0	1831.6			179.5	6.9	102.6	2637.4	97.2	70.4	1831.6			289.0	
STA.	38+88.0	TO	43+05.0	417.0	38.0	1760.7			172.5	9.1	98.6	2535.4	127.8	92.7	1760.7			280.2	
STA.	43+05.0	TO	45+34.0	229.0	Var. 38 to 34	916.0			89.8	5.0	51.3	1319.0	70.2	50.9	916.0			146.1	
STA.	45+34.0	TO	48+37.0	303.0	34.0	1144.7			112.2	3.3	64.1	1648.3	46.4	33.7	1144.7			179.6	
STA.	48+37.0	TO	50+26.0	189.0	48.0	1008.0			98.8	3.1	56.4	1451.5	43.5	31.5	1008.0			158.3	
STA.	50+26.0	TO	61+83.0	1157.0	34.0	4370.9			428.3	15.7	244.8	6294.1	221.7	160.7	4370.9			688.9	
STA.	61+83.0	TO	63+59.0	176.0	Var. 34 to 38	704.0			69.0	1.9	39.4	1013.8	27.0	19.6	704.0			110.3	
STA.	63+59.0	TO	66+95.0	336.0	38.0	1418.7			139.0	3.7	79.4	2042.9	51.5	37.3	1418.7			222.1	
STA.	66+95.0	TO	71+01.0	406.0	Var. 38 to 24	1398.4			137.0	4.4	78.3	2013.8	62.2	45.1	1398.4			219.8	
STA.	71+01.0	TO	81+40.0	1039.0	24.0	2770.7			271.5	5.7	155.2	3989.8	79.6	57.7	2770.7			432.3	
STA.	81+40.0		81+50.0	10.0	24.0	26.7	26.7	48.9	2.6	0.1	1.5	38.4	0.8	0.6	26.7			4.2	
RR OMISSION																			
STA.	83+00.0	TO	83+10.0	10.0	24.0	26.7	26.7	48.9	2.6	0.1	1.5	38.4	0.8	0.6	26.7			4.2	
STA.	83+10.0	TO	89+08.0	598.0	24.0	1594.7			156.3	3.3	89.3	2296.3	45.8	33.2	1594.7			248.8	
STA.	89+08.0	TO	89+18.0	10.0	24.0	26.7	26.7	48.9	2.6	0.1	1.5	38.4	0.8	0.6	26.7			4.2	
SUBTOTAL							210.7	299.4	3366.3	97.3	1898.5	49083.8	1374.3	992.8	33902.3		447.3	5362.1	
SIDEROAD SUBTOTAL							639.3	704.8				5578.8			2907.4	327.4			556
SHOULDER SUBTOTAL												3390.6			2560.6				362.6
ENTRANCE SUBTOTAL												8822.4				612.7			60
GRAND TOTAL							850.0	1004.0	3464.0		1899.0	68250.0		993.0	39370.0	940.0	447.0	5362.0	979.0
* SN 072-0056: 1.75" SURFACE																			
JT = JOINT TRIMMING																			

USER NAME = david.green	DESIGNED -	REVISED -
	DRAWN -	REVISED -
	CHECKED -	REVISED -
	DATE -	REVISED -

STATE OF ILLINOIS
DEPARTMENT OF TRANSPORTATION

SCHEDULE OF QUANTITIES

SCALE: SHEET 1 OF 5 SHEETS STA. TO STA.

F.A.P RTE.	SECTION	COUNTY	TOTAL SHEETS	SHEET NO.
671	11RS-6;GRS-3;10RS-9	PEORIA	27	8
CONTRACT NO. 68J62				
ILLINOIS FED. AID PROJECT				

MODEL: Schedule [Sheet] - 2
FILE NAME: c:\paw\work\paw\tdolgreendm\td1089745\ID468xxx-sh-schedule.dgn

SIDEROAD PAVEMENT SCHEDULE								
LOCATION	AREA	HMA SURFACE REMOVAL - BUTT JOINT	HMA SURFACE REMOVAL, 2 3/4"	HMA SURFACE REMOVAL, 1 3/4"	TEMPORARY RAMP	POLY. BIT. MATERIALS (TACK COAT)	INCIDENTAL HMA SURFACING	ISLAND PAVEMENT REMOVAL AND REPLACEMENT
						0.08 LB/SQ FT		
	SQ. FT.	SQ. YD.	SQ. YD.	SQ. YD.	SQ. YD.	POUND	TON	SQ. FT.
SIDEROADS								
ALLEY	338.1	18.2		19.4	30.6	54.1	3.7	
N. PARK ROAD	4437.7	38.6	454.5		69.3	710.0	75.9	60.0
N. RHODORA AVE.	1405.3	43.1		113.1	61.1	224.8	15.3	
N. STEVER AVE.	975.0	37.5		70.8	50.9	156.0	10.6	
N. STERLING AVE.	8393.6	83.9	848.8		132.4	1343.0	143.6	
N. PIERSON AVE.	2443.6	35.9	235.6		48.9	391.0	41.8	
W. SOUTHPORT RD (IL 8)	5183.9	54.0	522.0		91.7	829.4	88.7	
N. SWORDS AVE.	7884.1	29.5	846.5		48.9	1261.5	134.9	
N. STELLA CT.	742.2	26.6		55.9	40.7	118.8	8.1	
N. HAVEN CT.	167.2	7.8		10.8	40.7	26.8	1.8	
N. ABEL CT.	786.7	30.0		57.4	40.7	125.9	8.6	
N. RABER RD.	2110.0	234.4			48.9	337.6	23.0	
SUBTOTAL		639.3	2907.4	327.4	704.8	5578.8	556.0	60.0
GRAND TOTAL		SEE PAVEMENT SCHEDULE						60.0

SHOULDER SCHEDULE									
LOCATION				LENGTH	WIDTH	AGGREGATE SHOULDERS, TYPE B	HMA SURFACE REMOVAL, 2 3/4"	INCIDENTAL HMA SURFACING	POLY. BIT. MATERIALS (TACK COAT)
						1 INCH		2 3/4 INCH	0.08 LB/SQ FT
				FOOT	FOOT	TON	SQ. YD.	TON	POUND
RT. IL 8/W. FARMINGTON RD									
STA.	19+88.0	TO	24+59.0	471.0	10.0		523.3	80.6	753.6
STA.	24+59.0	TO	31+09.0	650.0	3.0	12.3			
STA.	32+91.0	TO	33+11.0	20.0	3.0	0.4			
STA.	40+94.0	TO	43+05.0	211.0	6.0		140.7	21.7	202.6
STA.	43+05.0	TO	45+34.0	229.0	3.0	4.3			
STA.	51+76.0	TO	55+49.0	373.0	8.0		331.6	51.1	477.4
STA.	55+49.0	TO	81+50.0	2601.0	3.0	49.4			
RR OMMISION									
STA.	83+00.0	TO	89+18.0	618.0	3.0	11.7			
LT. IL 8/W. FARMINGTON RD									
STA.	25+65.0	TO	31+09.0	544.0	3.0	10.3			
STA.	32+91.0	TO	33+11.0	20.0	3.0	0.4			
STA.	33+11.0	TO	46+70.0	1359.0	9.0		1359.0	209.3	1957.0
STA.	66+95.0	TO	81+50.0	1455.0	3.0	27.6			
RR OMISSION									
STA.	83+00.0	TO	89+18.0	618.0	3.0	11.7	206.0		
SUBTOTAL						128.2	2560.6	362.6	3390.6
GRAND TOTAL						128	SEE PAVEMENT SCHEDULE		

	USER NAME = david.green	DESIGNED -	REVISED -	STATE OF ILLINOIS DEPARTMENT OF TRANSPORTATION	SCHEDULE OF QUANTITIES			F.A.P RTE.	SECTION	COUNTY	TOTAL SHEETS	SHEET NO.
		DRAWN -	REVISED -					671	11RS-6;GRS-3;10RS-9	PEORIA	27	9
		CHECKED -	REVISED -					CONTRACT NO. 68J62				
	PLOT DATE = 5/22/2025	DATE -	REVISED -		SCALE:	SHEET 2	OF 5 SHEETS	STA.	TO STA.	ILLINOIS FED. AID PROJECT		

MODEL: Schedule [Sheet] - 3
FILE NAME: c:\pw_work\pwtolgreendm\1089745\ID468xxx-sh-schedule.dgn

ENTRANCE SCHEDULE						
ENTRANCE NO.	TYPE	AREA	AGGREGATE SURFACE COURSE, TYPE A	POLY. BIT. MATERIALS (TACK COAT)	INCIDENTAL HMA SURFACING	HMA SURFACE REMOVAL, 1 3/4"
		SQ. FT.	TON	POUND	TON	SQ. YD.
RT. IL 8/W. FARMINGTON RD						
1	PE	539.0		862.4	5.9	59.9
3	PE	250.0		400.0	2.7	27.8
4	FE	215.0	2.4			
5	PE	290.0		464.0	3.2	32.2
6	PE	150.0		240.0	1.6	16.7
7	PE	300.0		480.0	3.3	33.3
8	PE	830.0	9.5			
10	PE	320.0		512.0	3.5	35.6
11	PE	120.0	1.4			
13	PE	132.0	1.5			
18	PE	315.0	3.6			
21	PE	275.0	3.1			
23	CE	250.0		400.0	2.7	27.8
24	CE	260.0		416.0	2.8	28.9
31	CE	200.0		320.0	2.2	22.2
33	CE	385.0		616.0	4.2	42.8
LT. IL 8/W. FARMINGTON RD.						
2	CE	90.0	1.0			
9	CE	455.0		728.0	5.0	50.6
12	PE	295.0	3.4			
14	PE	203.0	2.3			
15	PE	100.0		160.0	1.1	11.1
16	PE	100.0	1.1	160.0	1.1	11.1
17	PE	180.0	2.1			
19	PE	215.0		344.0	2.3	23.9
20	PE	250.0	2.8			
22	PE	135.0		216.0	1.5	15.0
25	CE	200.0	2.3			
26	CE	320.0		512.0	3.5	35.6
27	CE	950.0	10.8			
28	CE	515.0		824.0	5.6	57.2
29	CE	450.0	5.1			
30	CE	1050.0	12.0			
32	CE	730.0		1168.0	7.9	81.1
SUBTOTAL			64.4	8822.4	60.0	612.7
GRAND TOTAL			64.0	SEE PAVEMENT SCHEDULE		

	USER NAME = david.green	DESIGNED -	REVISED -	STATE OF ILLINOIS DEPARTMENT OF TRANSPORTATION	SCHEDULE OF QUANTITIES			F.A.P RTE.	SECTION	COUNTY	TOTAL SHEETS	SHEET NO.
		DRAWN -	REVISED -					671	11RS-6;GRS-3;10RS-9	PEORIA	27	10
		CHECKED -	REVISED -					CONTRACT NO. 68J62				
	PLOT DATE = 5/22/2025	DATE -	REVISED -		SCALE:	SHEET 3	OF 5	SHEETS	STA.	TO STA.	ILLINOIS FED. AID PROJECT	

MODEL: Schedule [Sheet] - 4
FILE NAME: c:\pwwork\pwwork\greendm\1089745\ID468xxx-sh-schedule.dgn

PAVEMENT MARKING TABLE																					
LOCATION				MODIFIED URETHANE PAVEMENT MARKING LINE 4" (CENTERLINE)		GROOVING FOR RECESSED PAVEMENT MARKING 5"	MODIFIED URETHANE PAVEMENT MARKING - LINE 6" (EDGE LINES/ CROSSWALKS)	GROOVING FOR RECESSED PAVEMENT MARKING 7"	MODIFIED URETHANE PAVEMENT MARKING - LINE 8"		GROOVING FOR RECESSED PAVEMENT MARKING 9"	MODIFIED URETHANE PAVEMENT MARKING - LINE 12"		GROOVING FOR RECESSED PAVEMENT MARKING 13"	*MODIFIED URETHANE PAVEMENT MARKING - LINE 24"	GROOVING FOR RECESSED PAVEMENT MARKING 25"	MODIFIED URETHANE PAVEMENT MARKING - LETTERS AND SYMBOLS	GROOVING FOR RECESSED PAVEMENT MARKINGS, LETTERS AND SYMBOLS	RAISED REFLECTIVE PAVEMENT MARKER	RAISED REFLECTIVE PAVEMENT MARKER REMOVAL	*PAVEMENT MARKING REMOVAL - WATER BLASTING
							WHITE		WHITE			WHITE SOLID	YELLOW SOLID		WHITE SOLID		WHITE				
				YELLOW SOLID	YELLOW CL SKIP		FOOT		FOOT	FOOT		FOOT	FOOT		FOOT		FOOT	FOOT			
IL 8/W. Farmington Rd.																					
STA.	99+98.0	TO	101+23.0	424.0		424.0	694.0	694.0	422.0		422.0	102.5	25.0	127.5	351.0	351.0		0.0	6	6	444
STA.	101+23.0	TO	104+84.0	1444.0		1444.0	722.0	722.0					228.0	228.0					18	18	
STA. EQ: 104+84 (BK) = 5+15 (AH)																					
STA.	05+15.0	TO	10+34.0	2076.0		2076.0	1038.0	1038.0					260.0	260.0					26	26	
STA.	10+34.0	TO	15+84.0	2200.0		2200.0	1100.0	1100.0					85.0	85.0					28	42	
STA.	15+84.0	TO	23+16.0	2220.0		2220.0	1185.0	1185.0	340.0		340.0		33.0	33.0			62.4	62.4	37	37	
STA.	23+16.0	TO	34+10.0	1134.0	270.0	1404.0	2188.0	2188.0											14	14	
STA.	34+10.0	TO	48+37.0	3120.0	380.0	3500.0	2019.0	2019.0	436.0	51.0	487.0		75.0	75.0	25.0	25.0	156.0	156.0	85	85	
STA.	48+37.0	TO	71+01.0	5088.0	640.0	5728.0	4160.0	4160.0	350.0		350.0		116.0	116.0	30.0	30.0	312.0	312.0	121	121	
STA.	71+01.0	TO	81+50.0	1099.0	999.0	2098.0	2098.0	2098.0							30.0	30.0	61.2	61.2	13	13	
RR OMISSION																					
STA.	83+00.0	TO	89+18.0	1090.0	40.0	1130.0	1236.0	1236.0							30.0	30.0	61.2	61.2	8	8	
SIDEROADS																					
PARK RD.				120.0		120.0	205.0	205.0	341.0		341.0	138.0		138.0	20.0	20.0	62.4	62.4			
STERLING AVE.				176.0		176.0	120.0	120.0	176.0		176.0	141.0		141.0	45.0	45.0	31.2	31.2	5	5	
PIERSON AVE.				80.0		80.0	55.0	55.0						10.0	10.0	15.6	15.6				
IL 8 (SOUTHPORT RD.)				130.0		130.0	185.0	185.0						10.0	10.0						
SWORDS AVE.				137.0	30.0	167.0	415.0	415.0	110.0		110.0			10.0	10.0						
SUBTOTAL				20538.0	2359.0	22897.0	17420.0	17420.0	2175.0	51.0	2226.0	381.5	822.0	1203.5	561.0	561.0	762.0	762.0	360.4	374.4	444.0
GRAND TOTAL				22897.0		22897.0	17420.0	17420.0	2226.0		2226.0	1204.0		1204.0	561.0	561.0	762.0	762.0	360.0	374.0	444.0
* SPACING BETWEEN CROSSWALK LADDER MARKINGS SHALL BE 24"																					
**PAVEMENT MARKING REMOVAL - WATER BLASTING INCLUDES 2 CROSSWALKS THAT CROSS MAIN STREET																					

	USER NAME = david.green		DESIGNED -	REVISED -	STATE OF ILLINOIS DEPARTMENT OF TRANSPORTATION	SCHEDULE OF QUANTITIES										F.A.P RTE.	SECTION	COUNTY	TOTAL SHEETS	SHEET NO.
			DRAWN -	REVISED -												671	11RS-6;GRS-3;10RS-9	PEORIA	27	11
			CHECKED -	REVISED -												CONTRACT NO. 68J62				
	PLOT DATE = 5/22/2025		DATE -	REVISED -		SCALE:	SHEET 4	OF	5	SHEETS	STA.	TO STA.				ILLINOIS FED. AID PROJECT				

MODEL: Schedule [Sheet] - 5
FILE NAME: c:\paw_work\paw\dot\greendm\1099745\ID468xxx-sh-schedule.dgn

SHORT TERM PAVEMENT MARKING TABLE								
LOCATION				SHORT TERM PAVEMENT MARKING				SHORT TERM PAVEMENT MARKING REMOVAL*
				CENTERLINE/TURN LANE APPLICATION		LINE 24"		
				# OF APPLICATIONS	FOOT	# OF APPLICATIONS	FOOT	SQ. FT.
IL 8/W. FARMINGTON RD.								
STA.	99+98.0	TO	104+84.0	3	312.0			34.6
STA. EQ: 104+84 (BK) = 5+15 (AH)								
STA.	05+15.0	TO	10+34.0	3	312.0			34.6
STA.	10+34.0	TO	15+84.0	3	336.0			37.3
STA.	15+84.0	TO	23+16.0	3	456.0	3.0	10.0	57.3
STA.	23+16.0	TO	34+10.0	3	336.0			37.3
STA.	34+10.0	TO	48+37.0	3	852.0	3.0	93.0	156.6
STA.	48+37.0	TO	71+01.0	3	1413.0	3.0	50.0	190.2
STA.	71+01.0	TO	81+50.0	3	324.0	3.0	10.0	42.6
RR OMISSION								
STA.	83+00.0	TO	89+18.0	3	192.0	3.0	10.0	28.0
SUBTOTAL					4533.0		173.0	618.5
GRAND TOTAL				4706.0				618.0
*SHORT TERM PAVEMENT MARKING REMOVAL ONLY REQUIRED FOR ONE APPLICATION								

GUARDRAIL SCHEDULE											
LOCATION					GUARDRAIL REMOVAL	STEEL PLATE BEAM GUARDRAIL, TYPE A, 6 FOOT POSTS	TRAFFIC BARRIER TERMINAL, TYPE 1 (SPECIAL) TANGENT	TRAFFIC BARRIER TERMINAL, TYPE 2	LINEAR DELINEATOR PANELS, 4 INCH	TERMINAL MARKER - DIRECT APPLIED	GUARDRAIL AGGREGATE EROSION CONTROL
					FOOT	FOOT	EACH	EACH	EACH	EACH	TON
RT.	STA.	13+27	TO	17+66	439.0	362.5	1.0	1.0	5.0	1.0	60.0
TOTAL					439.0	363.0	1.0	1.0	5.0	1.0	60.0

INLETS TO BE ADJUSTED	
LOCATION	EACH
MAIN ST. / IL 8 (NE QUAD)	1
TOTAL	1

JOBSITE TABLE							
LOCATION	MOBILIZATION	CHANGEABLE MESSAGE SIGN*	CONSTRUCTION STATION LAYOUT	TRAFFIC CONTROL AND PROTECTION, STANDARD 701201	TRAFFIC CONTROL AND PROTECTION, STANDARD 701501	TRAFFIC CONTROL AND PROTECTION, STANDARD 701502	TRAFFIC CONTROL AND PROTECTION, STANDARD 701701
	L SUM	CAL DAY	L SUM	L SUM	L SUM	L SUM	L SUM
JOBSITE	1.0	100.0	1.0	1.0	1.0	1.0	1.0
TOTAL	1.0	100.0	1.0	1.0	1.0	1.0	1.0
* 5 BOARDS FOR 20 DAYS EACH							

	USER NAME = david.green	DESIGNED -	REVISED -	STATE OF ILLINOIS DEPARTMENT OF TRANSPORTATION	SCHEDULE OF QUANTITIES			F.A.P RTE.	SECTION	COUNTY	TOTAL SHEETS	SHEET NO.
		DRAWN -	REVISED -					671	11RS-6;GRS-3;10RS-9	PEORIA	27	12
		CHECKED -	REVISED -		SCALE:			CONTRACT NO. 68J62				
	PLOT DATE = 5/22/2025	DATE -	REVISED -		SHEET 5	OF 5 SHEETS	STA.	TO STA.	ILLINOIS	FED. AID PROJECT		

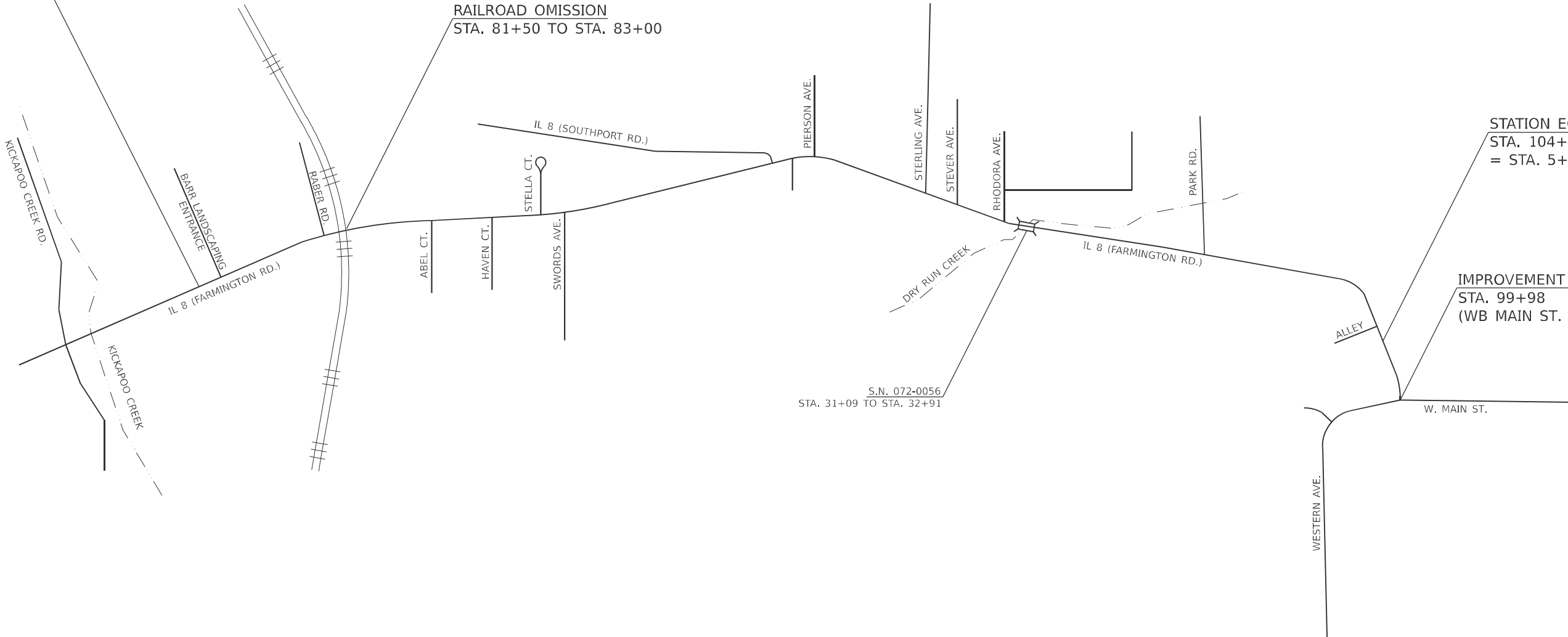


IMPROVEMENT ENDS
STA. 89+18

RAILROAD OMISSION
STA. 81+50 TO STA. 83+00

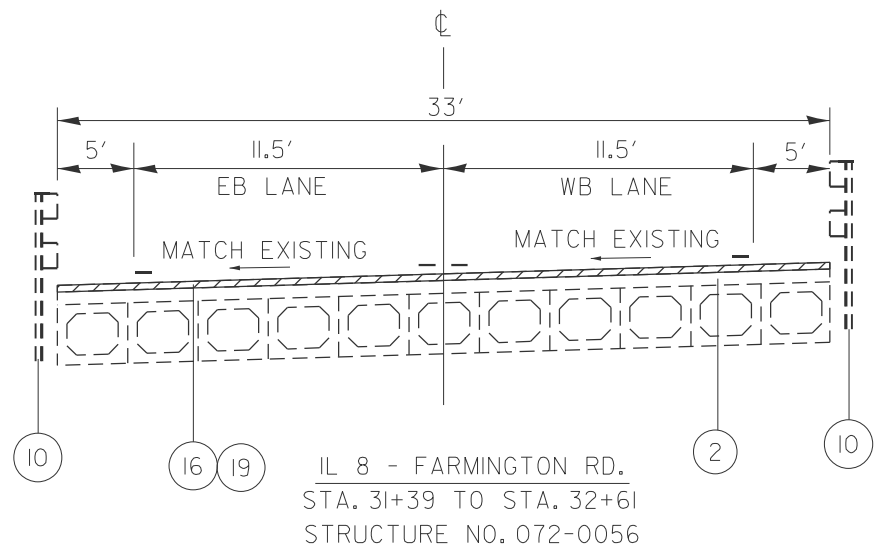
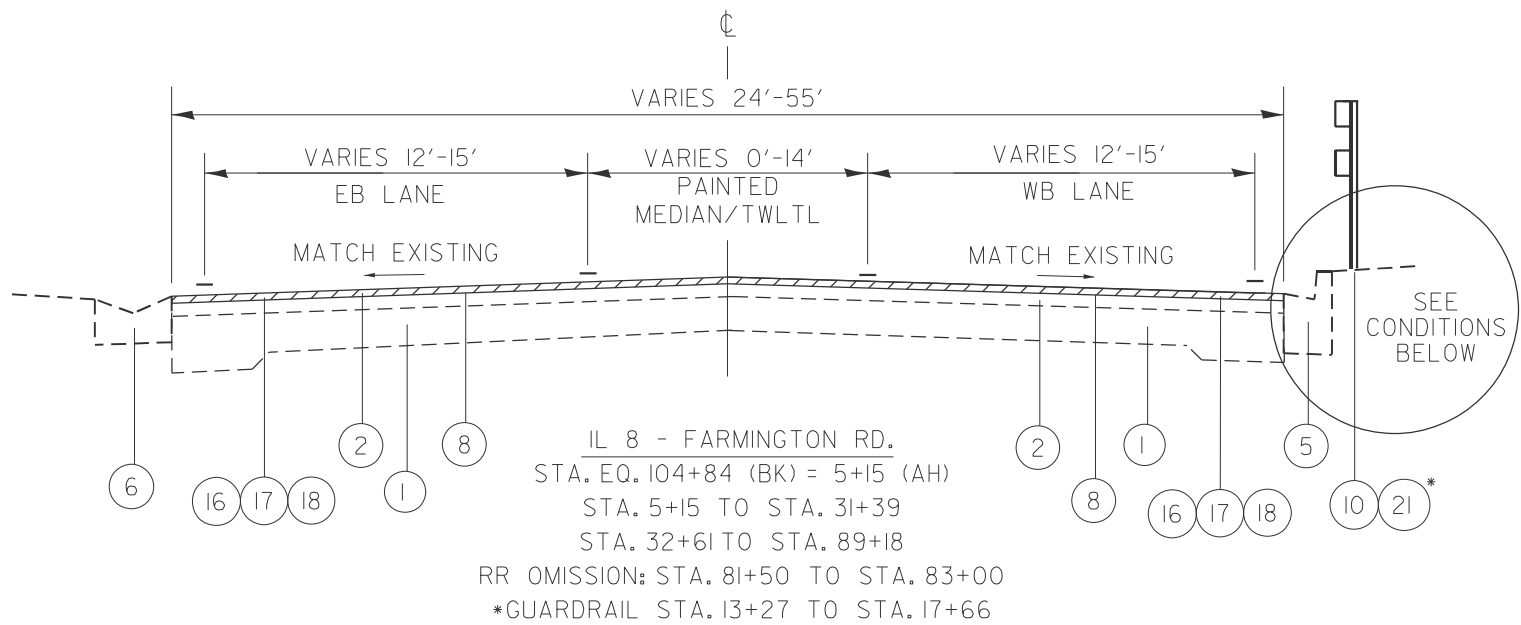
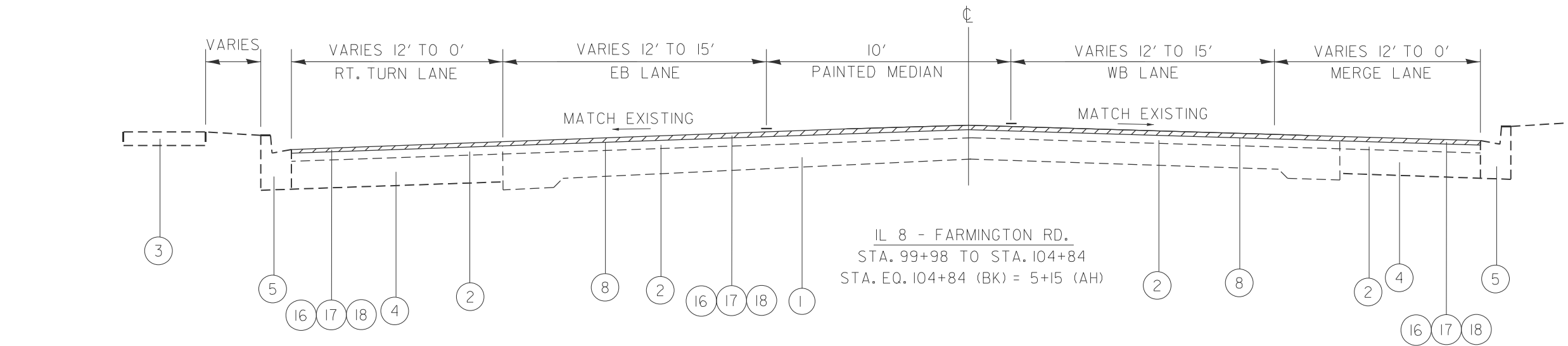
STATION EQUATION:
STA. 104+84 (BK)
= STA. 5+15 (AH)

IMPROVEMENT BEGINS
STA. 99+98
(WB MAIN ST. EOP)

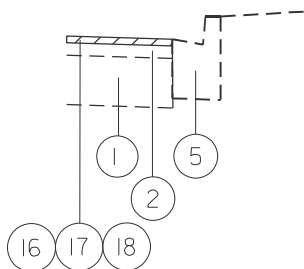


MODEL: Detail [Sheet] - 2
FILE NAME: c:\p\work\p\work\greendm\1089745\ID468xxx-sh-Details.dgn

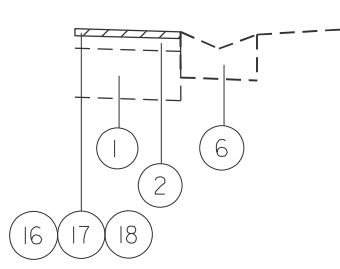
	USER NAME = david.green	DESIGNED -	REVISED -	STATE OF ILLINOIS DEPARTMENT OF TRANSPORTATION	LINE DIAGRAM			F.A.P RTE.	SECTION	COUNTY	TOTAL SHEETS	SHEET NO.
		DRAWN -	REVISED -					671	11RS-6;GRS-3;10RS-9	PEORIA	27	13
		CHECKED -	REVISED -					CONTRACT NO. 68J62				
	PLOT DATE = 5/22/2025	DATE -	REVISED -		SCALE:	SHEET A001	OF 1 SHEETS	STA.	TO STA.	ILLINOIS FED. AID PROJECT		



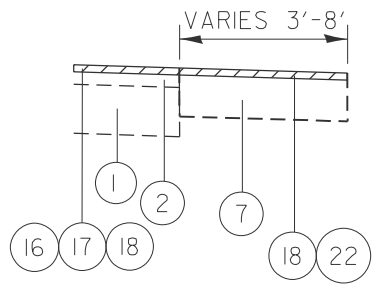
CONDITION 1:



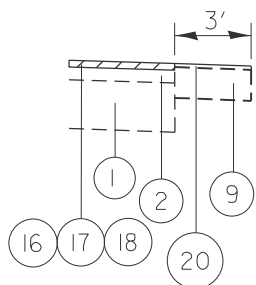
CONDITION 2:



CONDITION 3:



CONDITION 4:



NOTES:

- CONDITIONS APPLY TO WB AND EB SIDES
- VARIOUS TURN LANES EXIST ADJACENT TO WB LANES NOT SHOWN ON TYPICAL
- SEE PLAN SHEETS FOR LOCATIONS OF CONDITION

EXISTING ITEMS

- 9-6-9, P.C.C. PAVEMENT
- HMA OVERLAY, VARIABLE DEPTH
- P.C.C. SIDEWALK
- P.C.C. BASE COURSE, 8"
- COMB. CONC. CURB & GUTTER
- CONCRETE GUTTER, TYPE B
- HMA SHOULDER
- AREA REFLECTIVE CRACK CONTROL
- AGGREGATE SHOULDERS
- GUARDRAIL

PROPOSED ITEMS

- POLY. HMA SURF. COURSE, IL-9.5, MIX "D", N50, 1.75"
- POLY. HMA BIND. COURSE, IL-4.75, N50, 1.0"
- HMA SURFACE REMOVAL, 2.75"
- HMA SURFACE REMOVAL(DECK), 1.75"
- AGGREGATE SHOULDERS, TYPE B, 1"
- GUARDRAIL
- INCIDENTAL HMA SURFACING, 2.75"

MODEL: Typical Sections (Sheet) - 1
FILE NAME: c:\paw\pawid\greendm\1089745\ID468xx-ah-typical-10.dgn

USER NAME = david.green	DESIGNED -	REVISED -
	DRAWN -	REVISED -
	CHECKED -	REVISED -
PLOT DATE = 5/15/2025	DATE -	REVISED -

STATE OF ILLINOIS
DEPARTMENT OF TRANSPORTATION

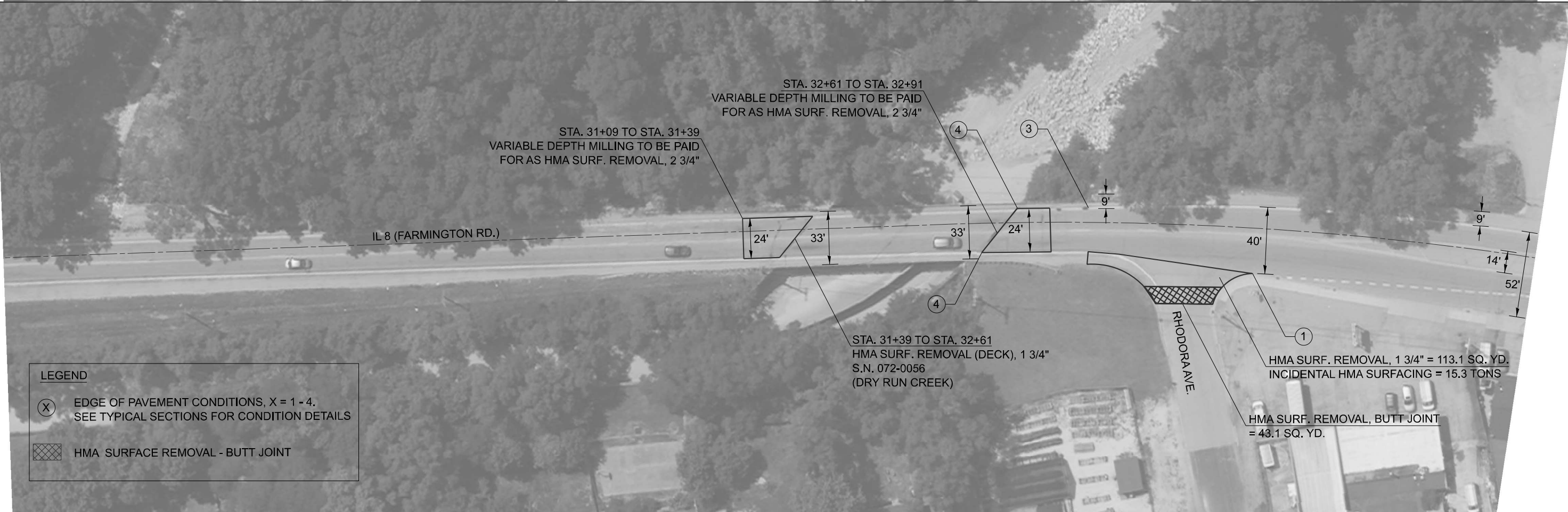
TYPICAL SECTIONS

SCALE: SHEET 1 OF 1 SHEETS STA. TO STA.

F.A.P RTE.	SECTION	COUNTY	TOTAL SHEETS	SHEET NO.
671	11RS-6;GRS-3;10RS-9	PEORIA	27	14
CONTRACT NO. 68J62				
ILLINOIS FED. AID PROJECT				

MODEL: Unnamed Plan-1 - Plan [Sheet]
FILE NAME: c:\p\work\p\id\green\dm\1089747\1468xx-Design.dgn





LEGEND

- (X) EDGE OF PAVEMENT CONDITIONS, X = 1 - 4.
SEE TYPICAL SECTIONS FOR CONDITION DETAILS
- [Hatched Box] HMA SURFACE REMOVAL - BUTT JOINT

USER NAME	= david.green	DESIGNED	-	REVISED	-
		DRAWN	-	REVISED	-
		CHECKED	-	REVISED	-
PLOT DATE	= 5/22/2025	DATE	-	REVISED	-

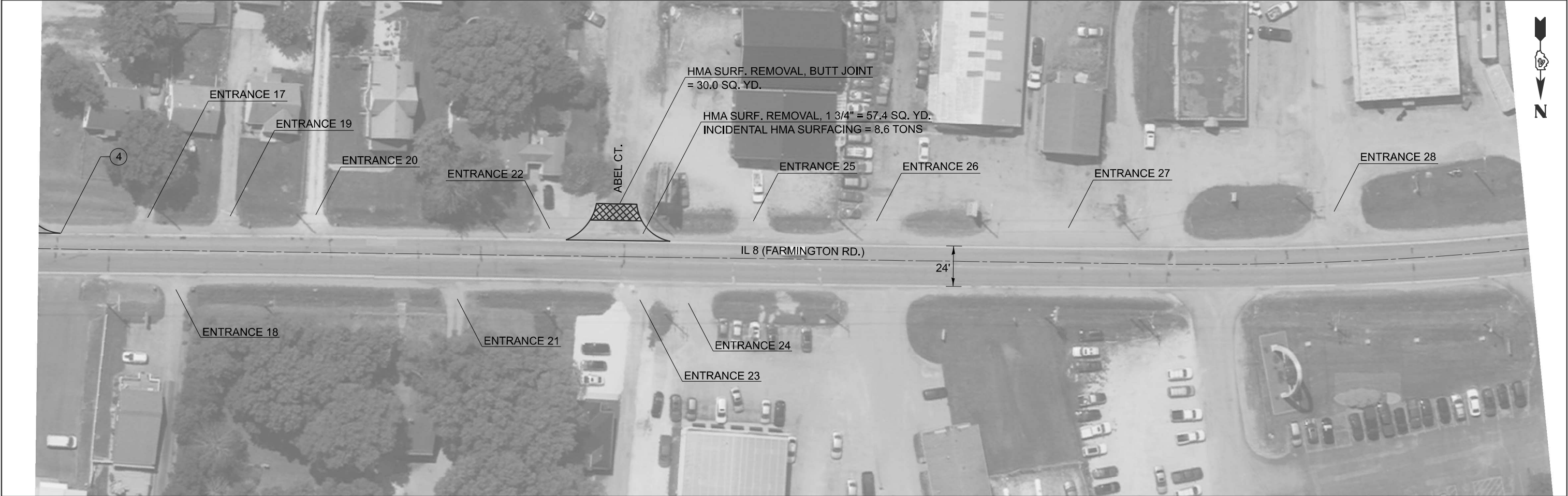
STATE OF ILLINOIS
DEPARTMENT OF TRANSPORTATION

PLAN SHEETS

SCALE: 1"=30' SHEET 2 OF 5 SHEETS STA. 18+00.0001 TO STA. 36+00.0002

F.A.P. RTE.	SECTION	COUNTY	TOTAL SHEETS	SHEET NO.
671	11RS-6;GRS-3;10RS-9	PEORIA	27	16
CONTRACT NO. 68J62				
ILLINOIS FED. AID PROJECT				





MODEL: Unnamed Plan-1 - Plan-S (Sheet)
FILE NAME: c:\p\work\p\work\green\dmd\1099747\D468xx-Design.dgn

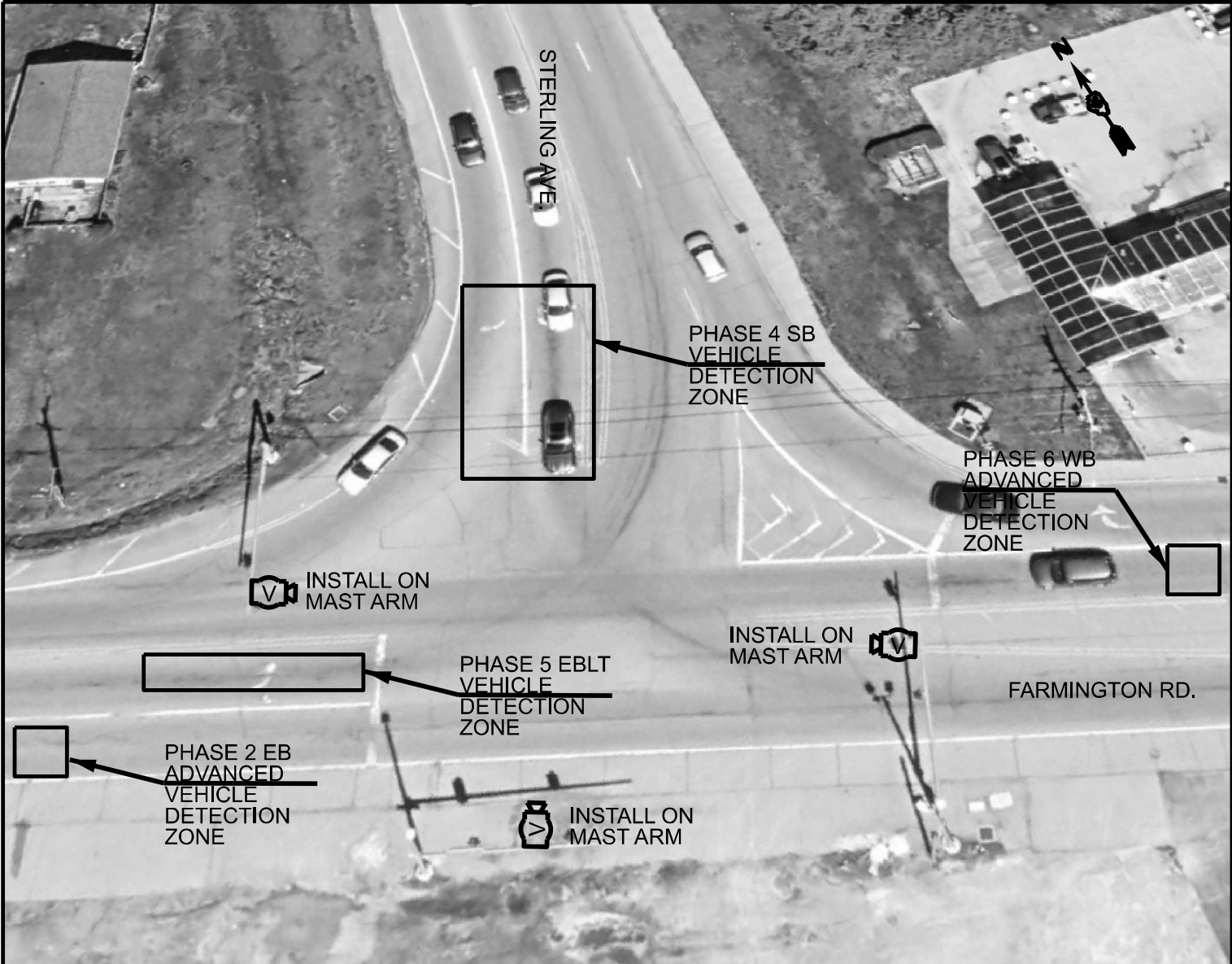
PLOT DATE	USER NAME	DESIGNED	REVISED
	= david.green	-	-
		DRAWN	REVISED
		-	-
DATE	CHECKED	REVISED	
	-	-	
		REVISED	
		-	

STATE OF ILLINOIS
DEPARTMENT OF TRANSPORTATION

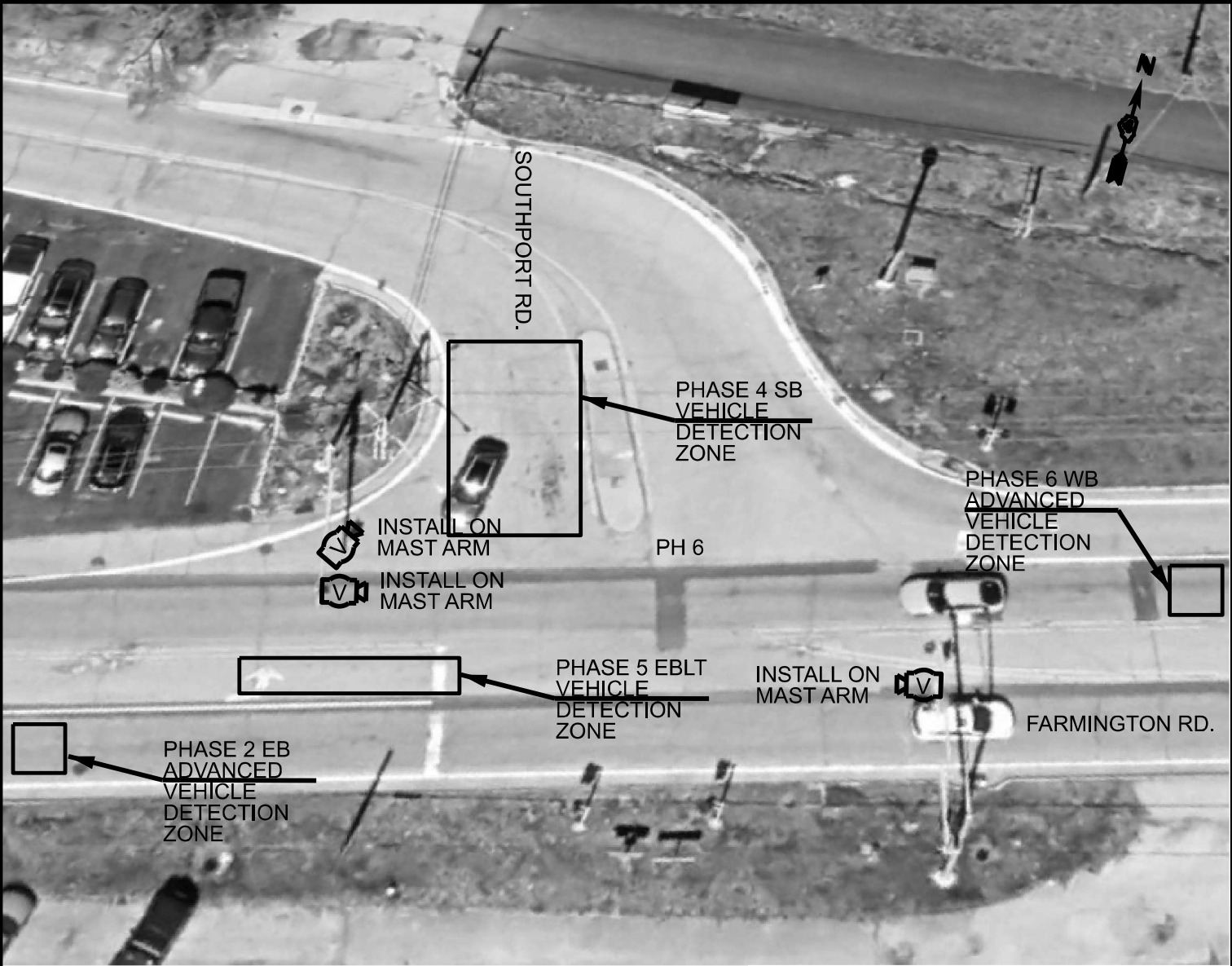
PLAN SHEETS

SCALE: 1"=30' SHEET 5 OF 5 SHEETS STA. 72+00.0005 TO STA. 90+00.0006

F.A.P RTE.	SECTION	COUNTY	TOTAL SHEETS	SHEET NO.
671	11RS-6;GRS-3;10RS-9	PEORIA	27	19
CONTRACT NO. 68J62				
ILLINOIS FED. AID PROJECT				



FARMINGTON RD. & STERLING RD.



FARMINGTON RD. & SOUTHPORT RD.

MAST ARM INSTALLATION - CONSTRUCTION NOTES	
1.	THE CONTRACTOR SHALL SCHEDULE THE INSTALLATION OF THE PROPOSED VIDEO DETECTION SYSTEMS ONLY DURING THE HOURS OF 8:30 AM TO 3:00 PM MONDAY THROUGH FRIDAY.
2.	THE CONTRACTOR WILL BE ALLOWED TO PLACE THE INTERSECTION INTO ALL-RED FLASH MODE AND ALL-WAY STOP CONTROL ONLY DURING THE HOURS SPECIFIED ABOVE TO FACILITATE THE INSTALLATION OF THE PROPOSED TRAFFIC SIGNAL COMPONENTS.
3.	THE CONTRACTOR SHALL FURNISH AND INSTALL A MINIMUM OF TWO STOP SIGNS PER APPROACH WHEN THE INTERSECTION IS OPERATING IN ALL-RED FLASH MODE OR ALL-WAY STOP CONTROL.
4.	ALL COSTS (LABOR, MATERIALS, AND EQUIPMENT) ASSOCIATED WITH THESE REQUIREMENTS SHALL BE INCLUDED IN THE CONTRACT BID PRICE FOR THE PROPOSED MAST ARMS. THERE WILL BE NO ADDITIONAL COMPENSATION FOR THIS WORK.
CONSTRUCTION NOTES	
1.	ANY MAINTENANCE OF EXISTING TRAFFIC SIGNALS WILL BE CONSIDERED EXTRA WORK IN ACCORDANCE WITH ARTICLE 109.04 OF THE STANDARD SPECIFICATIONS.
2.	THE LOCATION OF ALL UTILITIES AND PRIVATELY OWNED FACILITIES SHALL BE FIELD VERIFIED BY THE CONTRACTOR PRIOR TO THE INSTALLATION OF ANY COMPONENTS.
3.	THE CONTRACTOR SHALL BE RESPONSIBLE FOR LOCATING EXISTING IDOT ELECTRICAL FACILITIES AT HIS/HER OWN EXPENSE IF REQUIRED. THE CONTRACTOR SHALL ALSO BE LIABLE FOR ANY DAMAGE TO IDOT FACILITIES RESULTING FROM INACCURATE LOCATING.
4.	ELECTRICAL WORK SHALL CONFORM WITH NATIONAL, STATE, AND LOCAL CODES.
5.	THE EXISTING TRAFFIC SIGNALS SHALL REMAIN IN OPERATION DURING THE CONSTRUCTION OF THE PROPOSED TRAFFIC SIGNALS.
6.	THE CONTRACTOR SHALL PROVIDE ELECTRICAL CABLE SLACK IN ACCORDANCE WITH ARTICLE 873.03.
7.	ELECTRICAL CABLE WILL BE MEASURED FOR PAYMENT IN ACCORDANCE WITH ARTICLE 873.04.
8.	ALL SURPLUS MATERIALS SHALL BE DISPOSED OF IN ACCORDANCE WITH ARTICLE 202.03 OF THE STANDARD SPECIFICATIONS.
9.	ALL VIDEO DETECTION CAMERAS SHALL BE INSTALLED ON THE TRAFFIC SIGNAL MAST ARM. CAMERAS SHALL BE CENTERED OVER THE APPROACH (INCLUDES BOTH THRU AND LEFT TURN LANES) AND INSTALLED ON FIVE FT. EXTENSION BRACKETS.
10.	THE COST OF REMOVING EXISTING ITEMS SHALL BE INCLUDED IN THE COST OF THE PROPOSED ITEMS.

BILL OF MATERIALS		
FARMINGTON RD. @ STERLING AVE. & SOUTHPORT RD.		
VIDEO VEHICLE DETECTION SYSTEM, 3 CAMERA	EACH	2.0

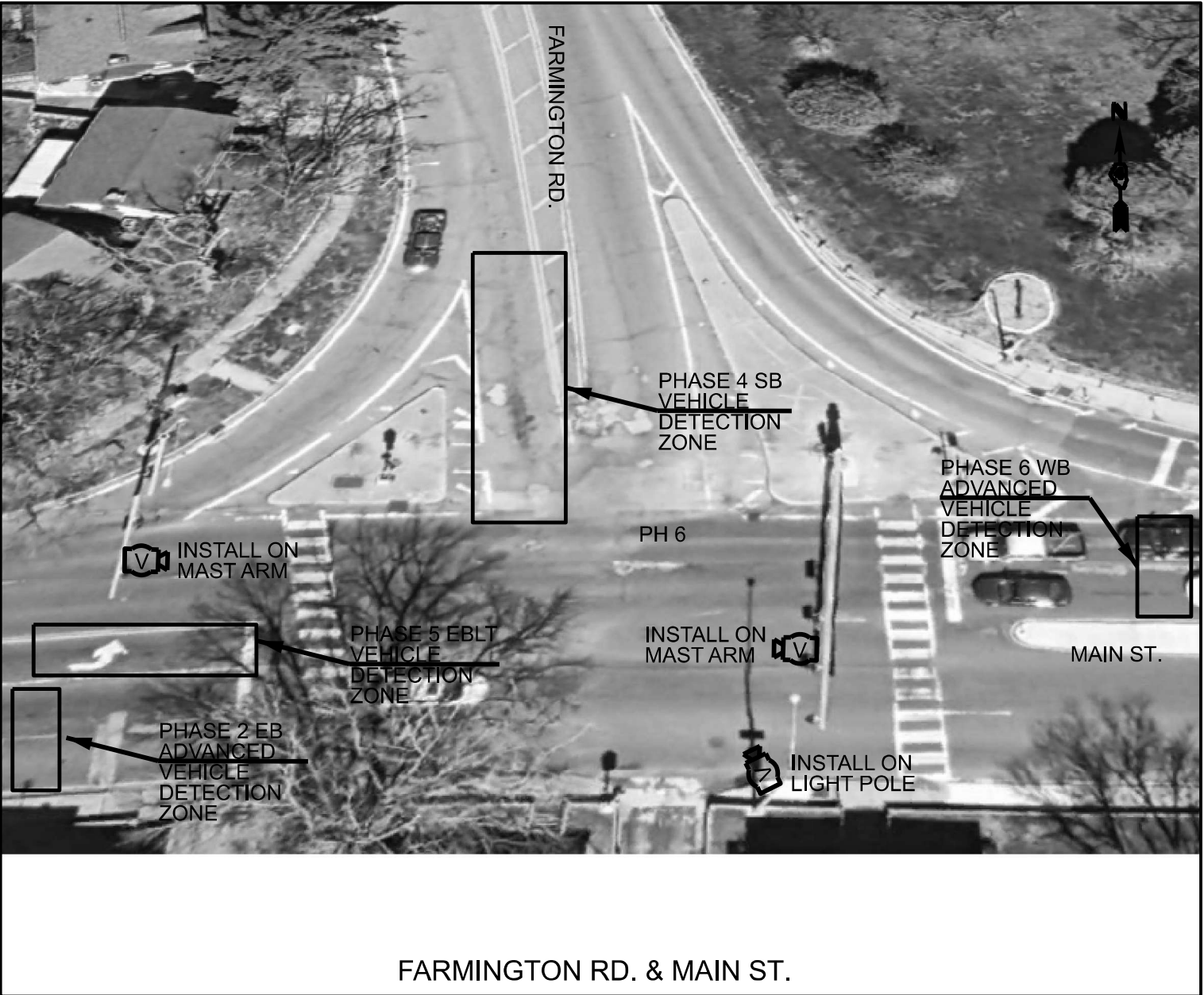
MODEL: Default
FILE NAME: c:\pwwork\johanson\0939664\Signals Complete.dgn

USER NAME = trevor.hanson	DESIGNED - _____	REVISED - _____
	DRAWN - _____	REVISED - _____
	CHECKED - _____	REVISED - _____
PLOT DATE = 1/7/2025	DATE - _____	REVISED - _____

STATE OF ILLINOIS
DEPARTMENT OF TRANSPORTATION

PROPOSED TRAFFIC SIGNALS			
FARMINGTON RD. & STERLING AVE. FARMINGTON RD. & SOUTHPORT RD.			
SCALE: _____	SHEET _____	OF _____ SHEETS	STA. _____ TO STA. _____

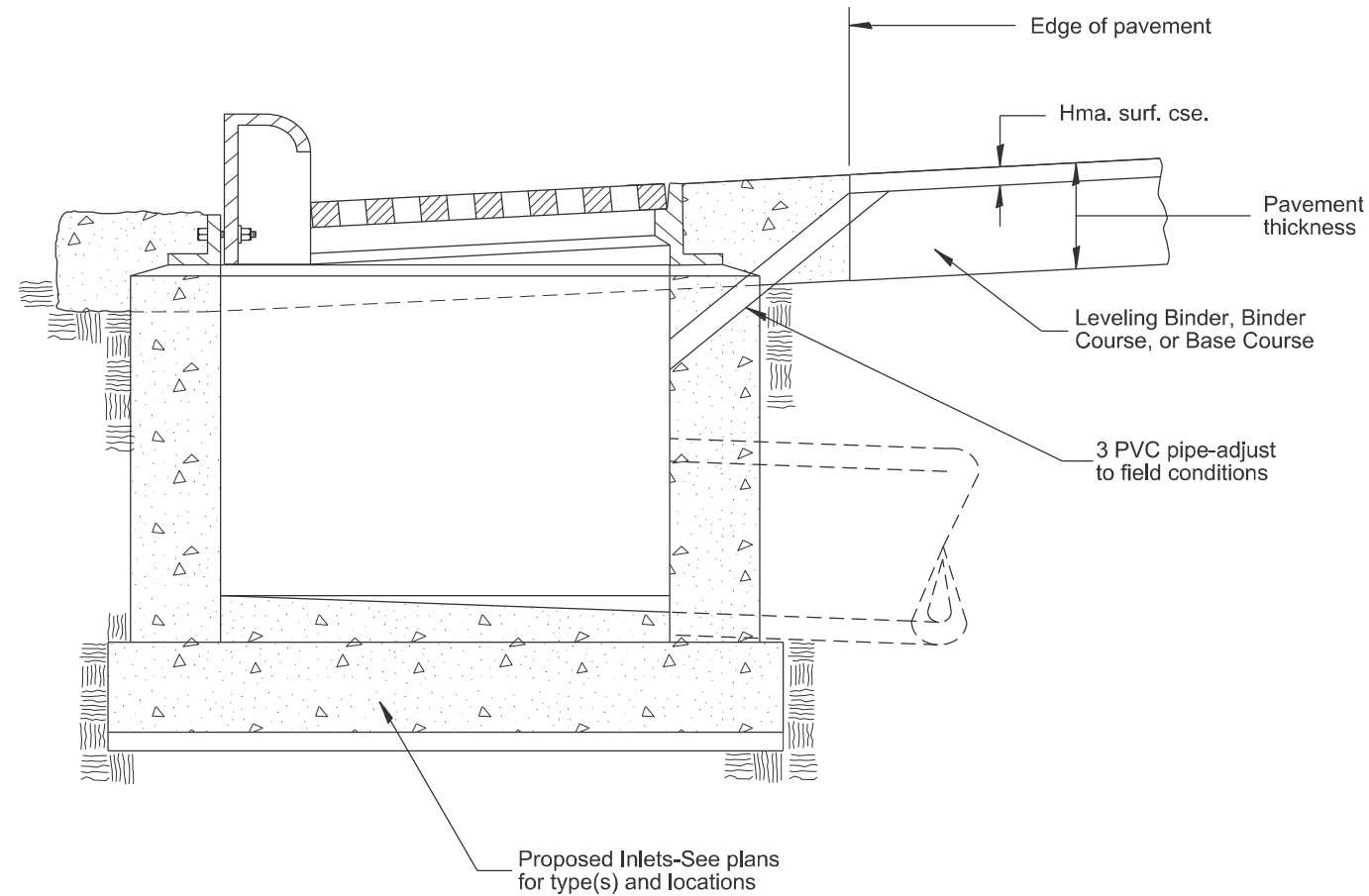
F.A.P. RTE.	SECTION	COUNTY	TOTAL SHEETS	SHEET NO.
671	11RS-6;GRS-3;10RS-9	PEORIA	27	20
CONTRACT NO. 68J62				
ILLINOIS FED. AID PROJECT				



BILL OF MATERIALS		
FARMINGTON RD. @ MAIN ST.		
VIDEO VEHICLE DETECTION SYSTEM, 3 CAMERA	EACH	1.0

MODEL: Default
FILE NAME: c:\pwwork\jw\hanson\0939664\SIGNALS Complete.dgn

	USER NAME = trevor.hanson	DESIGNED - _____	REVISED - _____	STATE OF ILLINOIS DEPARTMENT OF TRANSPORTATION	PROPOSED TRAFFIC SIGNALS FARMINGTON RD. & MAIN ST.				F.A.P. RTE.	SECTION	COUNTY	TOTAL SHEETS	SHEET NO.
		DRAWN - _____	REVISED - _____						671	11RS-6;GRS-3;10RS-9	PEORIA	27	21
		CHECKED - _____	REVISED - _____						CONTRACT NO. 68J62				
	PLOT DATE = 1/7/2025	DATE - _____	REVISED - _____		SCALE: _____		SHEET _ OF _ SHEETS	STA. _____	TO STA. _____	ILLINOIS FED. AID PROJECT			



GENERAL NOTES:

- 1. Temporary Drainage - This work consists of furnishing and installing a 3 PVC pipe in the proposed inlet to facilitate drainage off the pavement prior to the placement of bituminous surface course.
- 2. Adequate pavement drainage shall be maintained during all phases of construction.
- 3. The PVC pipe is to be filled with mortar prior to surface course placement.
- 4. This detail applies to all inlet types.

All dimensions are in inches
unless otherwise noted.

F.A.P. RTE.	SECTION	COUNTY	TOTAL SHEETS	SHEET NO.
671	11RS-6;GRS-3;10RS-9	PEORIA	27	22
DISTRICT 4 DETAIL NO. 602401		CONTRACT NO. 68J62		
ILLINOIS		FED. AID PROJECT		

MODEL: D4-602401
FILE NAME: c:\p\work\p\work\green\dmd1089760\D4-602401.dgn

USER NAME	= david.green	DESIGNED	-	REVISED	-
		DRAWN	-	REVISED	-
		CHECKED	-	REVISED	-
PLOT DATE	= 5/15/2025	DATE	-	REVISED	-

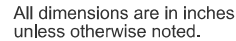
STATE OF ILLINOIS DEPARTMENT OF TRANSPORTATION

TEMPORARY INLET DRAINAGE TREATMENT				
SCALE: NOT TO SCALE	SHEET 1	OF 6	SHEETS	STA. TO STA.

MODEL: D4-630101-01
FILE NAME: c:\pw work



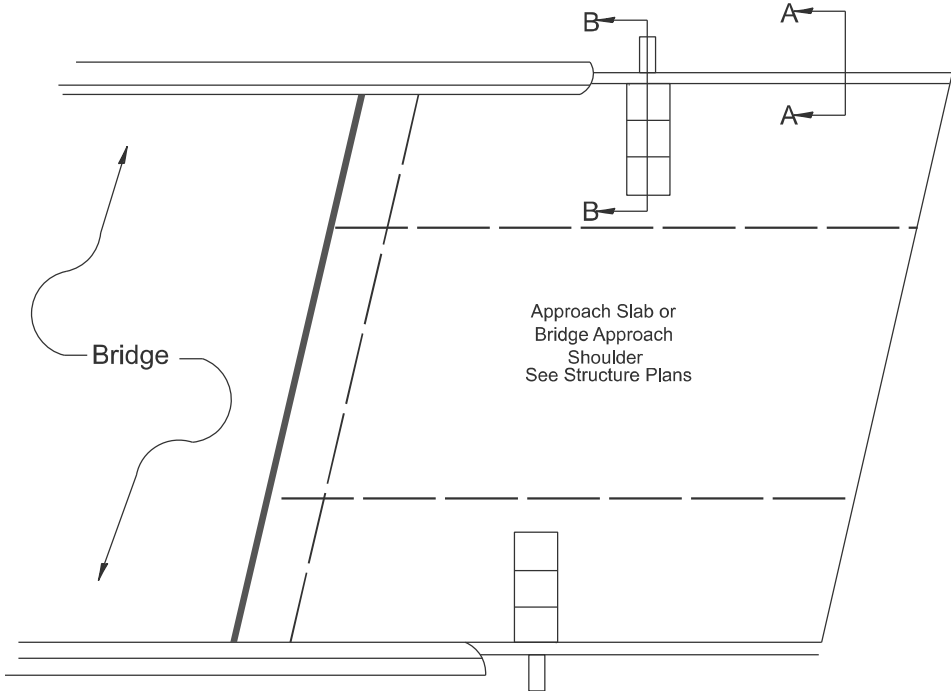
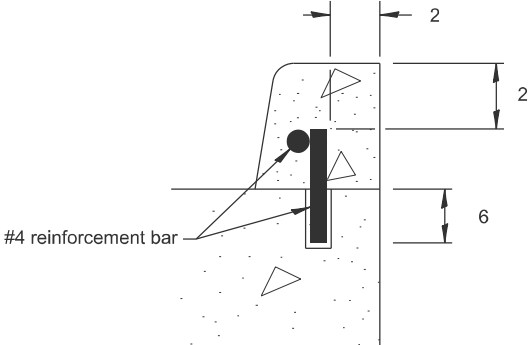
1. This work shall consist of grading as needed, furnishing and installing geotextile fabric and staples, and furnishing, placing and shaping crushed aggregate around and behind Steel Plate Beam Guardrail posts in accordance with Plan Details.
2. Before placing the aggregate and the Geotextile Fabric, weeds and grass shall be removed from the area to be covered.
3. After the area has been prepared, and in a dry condition, the Geotextile fabric shall be placed with a 12 minimum overlap. A knife cut for guardrail post installation is necessary.
4. The aggregate shall be deposited, compacted and shaped by either mechanical or hand methods, in a manner reasonably true to line and grade.
5. The Contractor shall have the option of placing the guardrail before or after the Geotextile Fabric and Aggregate are in place. If the guardrail is placed after the Geotextile Fabric and Aggregate, then any voids must be filled and the aggregate returned to line and grade.
6. Materials shall meet the following requirements:
 - A. The crushed aggregate shall be CA1 gradation in accordance with Article 1004.01(c) of the Standard Specifications.
 - B. The Geotextile Fabric shall be nonwoven fabric in accordance with Article 1080.02 of the Standard Specifications.



USER NAME = david.green	DESIGNED -	REVISED -	STATE OF ILLINOIS DEPARTMENT OF TRANSPORTATION	GUARDRAIL EROSION CONTROL TREATMENTS			F.A.P RTE.	SECTION	COUNTY	TOTAL SHEETS	SHEET NO.
	DRAWN -	REVISED -					671	11RS-6;GRS-3;10RS-9	PEORIA	27	23
	CHECKED -	REVISED -		DISTRICT 4 DETAIL NO. 630101				CONTRACT NO. 68J62			
PLOT DATE = 5/15/2025	DATE -	REVISED -		SCALE: NOT TO SCALE	SHEET 2 1 OF 6 2 SHEETS	STA.	TO STA.	ILLINOIS FED. AID PROJECT			

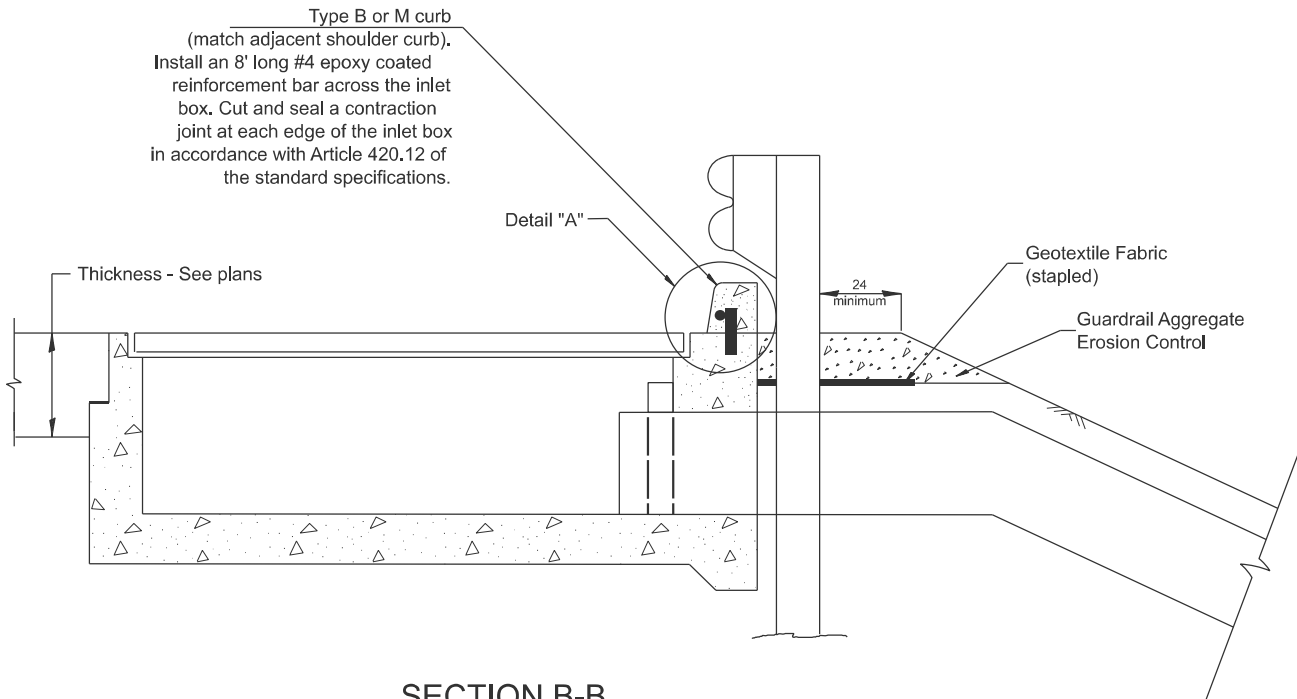
DETAIL "A"

#4 reinforcement bars may be cast in PCC apron and precast inlet box or drilled and anchored with an approved chemical adhesive at 2' spacing. Cost of curb and reinforcement are included in the cost of shoulder inlet.



PLAN VIEW

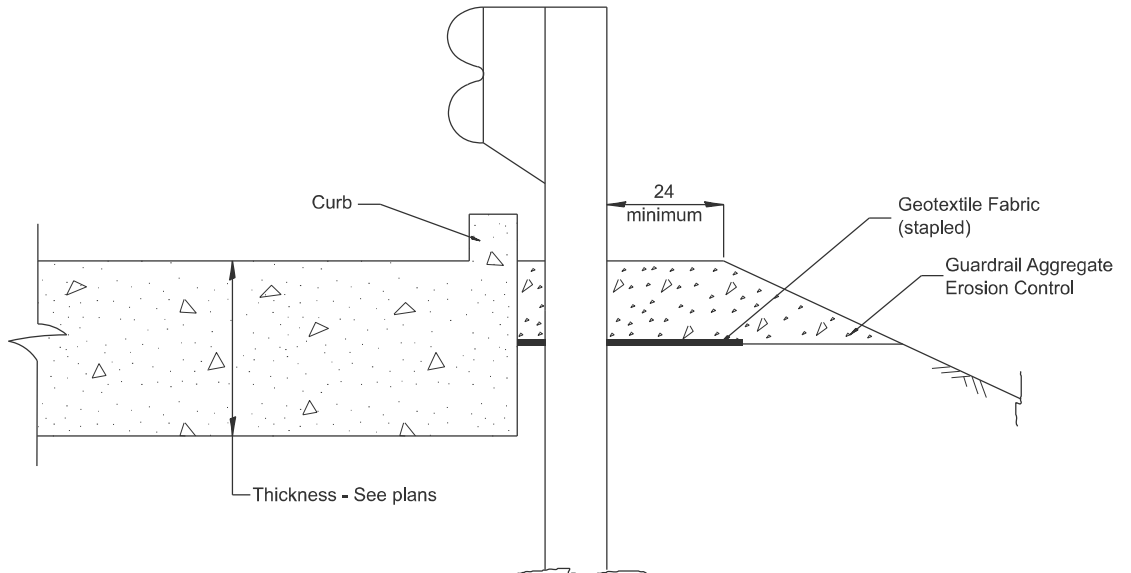
APPROACH SLAB OR SHOULDER PLACEMENT



SECTION B-E

TYPICAL SECTION AT INLETS

TYPE E, F & G (HIGHWAY STANDARD 610001)



SECTION A-A

TYPICAL SECTION WITH BRIDGE APPROACH CURB

All dimensions are in inches
unless otherwise noted.

USER NAME = david.green	DESIGNED -	REVISED -
	DRAWN -	REVISED -
	CHECKED -	REVISED -
PLOT DATE = 5/22/2025	DATE -	REVISED -

STATE OF ILLINOIS
DEPARTMENT OF TRANSPORTATION

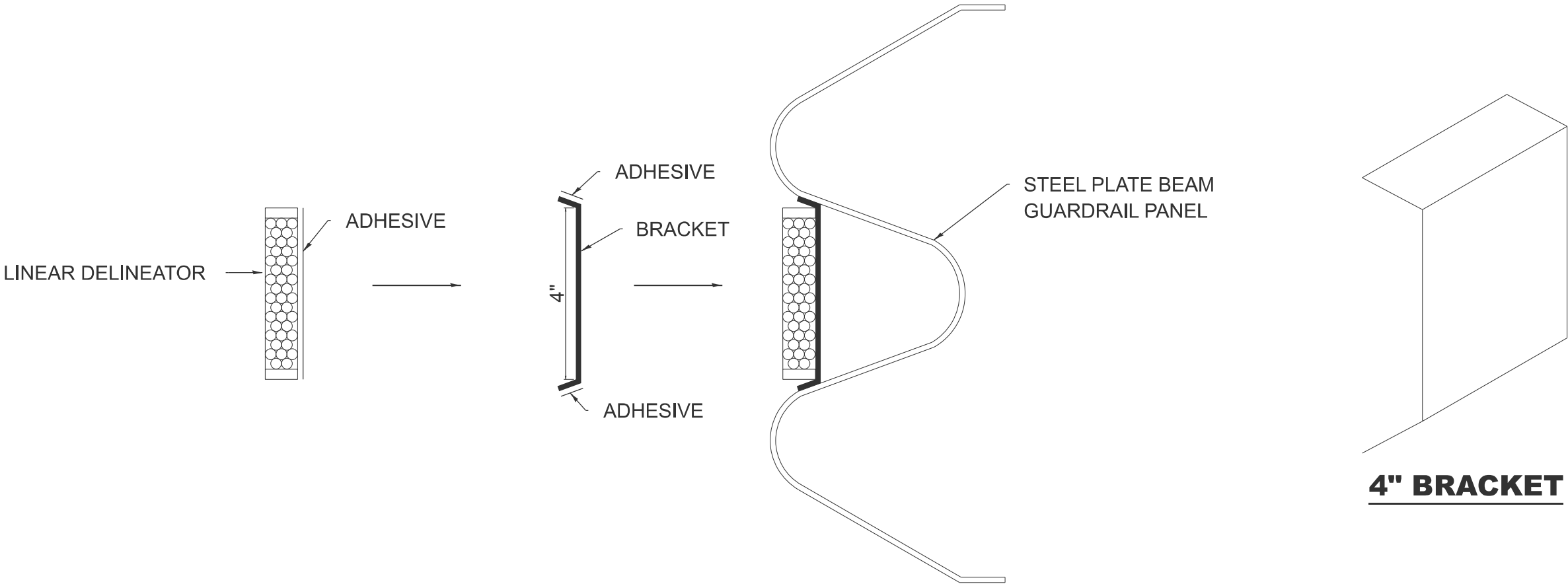
GUARDRAIL EROSION CONTROL TREATMENTS

SCALE: NOT TO SCALE	SHEET 3 2	OF 62	SHEETS	STA.	TO ST
---------------------	-----------	-------	--------	------	-------

F.A.P RTE.	SECTION	COUNTY	TOTAL SHEETS	SHEET NO.
671	11RS-6;GRS-3;10RS-9	PEORIA	27	24
DISTRICT 4 DETAIL NO. 630101		CONTRACT NO. 68J62		
ILLINOIS FED. AID PROJECT				

ILLINOIS	FED AID PROJECT
----------	-----------------

MODEL: D4-630101-02
FILE NAME: c:\pw work\pwidot\greendm\d1099760\D4-630101.dgn



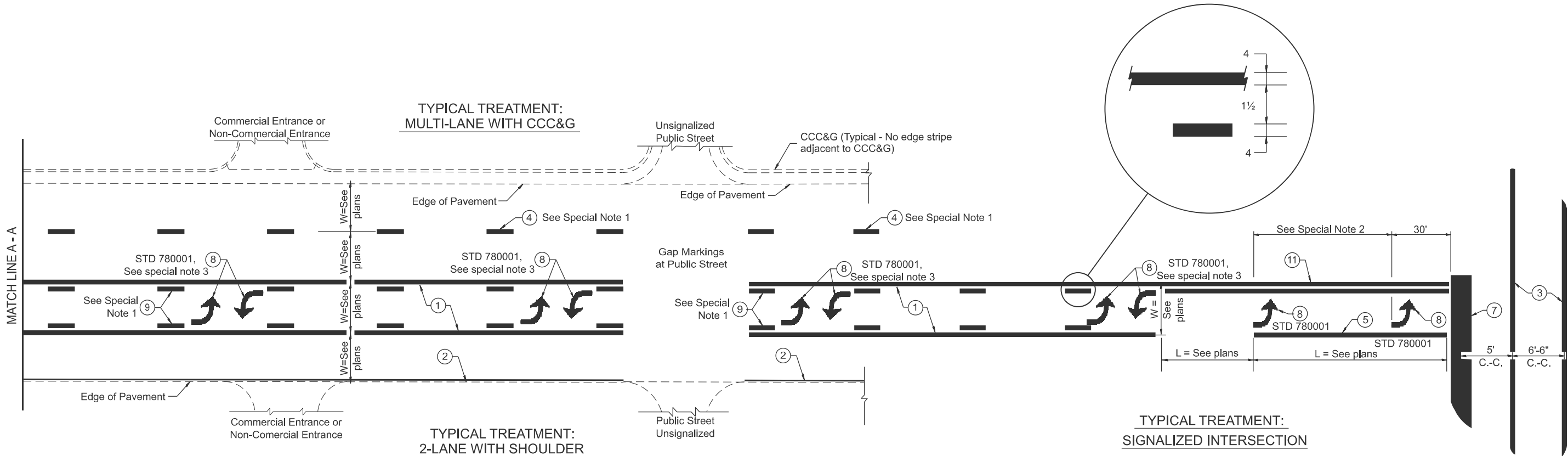
LINEAR DELINEATOR APPLICATION TO STANDARD GALVANIZED GUARDRAIL

LINEAR DELINEATOR SHALL BE APPLIED ACCORDING TO THE MANUFACTURER'S RECOMMENDATIONS

MODEL: Named Boundary Sheet H
FILE NAME: c:\p\work\dwg\green\dmd1089760\D4-635003.dgn

	USER NAME = david.green	DESIGNED -	REVISED -	STATE OF ILLINOIS DEPARTMENT OF TRANSPORTATION	LINEAR DELINEATOR APPLICATION TO STANDARD GALVANIZED GUARDRAIL			F.A.P RTE.	SECTION	COUNTY	TOTAL SHEETS	SHEET NO.
		DRAWN -	REVISED -					671	11RS-6;GRS-3;10RS-9	PEORIA	27	25
		CHECKED -	REVISED -		SCALE: NOT TO SCALE SHEET 4 OF 6 SHEETS STA. TO STA.			DISTRICT 4 DETAIL NO. 635003 CONTRACT NO. 68J62				
	PLOT DATE = 5/15/2025	DATE -	REVISED -					ILLINOIS FED. AID PROJECT				

DESIGNER NOTES:
MODEL: D4-780001-01 1. Include State Standard 780001 (Typical Pavement Markings)
FILE NAME: c:\pav_work\pavdesign\std780001.dgn



**FLUSH PAVED MEDIAN: TWO-WAY LEFT TURN LANE
WITH ONE-WAY LEFT TURN LANE AT SIGNALIZED INTERSECTION**

TYPICAL PAVEMENT MARKING LEGEND

(Note: This is a District Standard Legend.
Some elements may not apply to specific project.)

- ① 4 Solid (Yellow)
- ② 4 Solid (White)
- ③ 2-6 Crosswalk @ 6'-6" min C.-C. (White)
2-8 Crosswalk @ 6'-6" min C.-C. (White) (When traffic signals are present.)
- ④ 6 Skip-Dash (White)
 (See Special Note 1)
- ⑤ 8 Solid (White)
- ⑥ 12 Diagonal (White) (Item ⑥ is shown on Std. 780001)
- ⑦ 24 Stop Bar (White)
- ⑧ Letters & Arrows
 (See Std. 780001 and Special Notes 2 & 3)
- ⑨ 4 Skip-Dash (Yellow)
 (See Special Note 1)
- ⑩ 12 Diagonal (Yellow) (See Table A)
 (See Table A)
- ⑪ 4 Double Solid (Yellow)
 (See Table A)

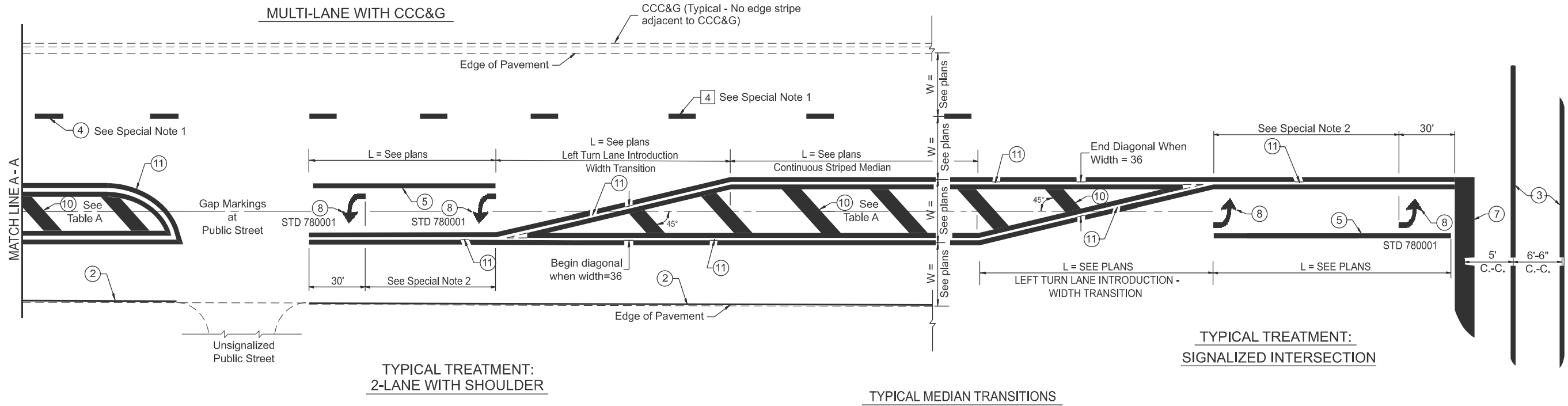
SPECIAL NOTES

- ~~Skip-Dash markings will be centered between~~
both ends of city blocks and shall be placed
in alignment transversely across the pavement.
- The following shall apply to arrows located in
one-way left turn lanes:
A. A minimum of two (2) arrows is required.
B. The maximum spacing between arrows
is 80'.
C. Arrows shall be evenly spaced if three (3)
or more are required.
- The following shall apply to arrow pairs located
in two-way left turn lanes:
A. A minimum of two (2) arrow pairs is required.
B. The maximum spacing between arrow pairs
is 200'.
C. Arrow pairs shall be evenly spaced if three (3)
or more are required.
D. The spacing between Bi Directional Left Turn
Arrows is 33'.

GENERAL NOTES

- Refer to State Standard 780001 for additional
Pavement Markings including letters & arrows.
- See Plans for Pavement Markings adjacent to
curbed islands and medians, and through lane
reductions.
- Refer to Article 780.13 for letter, number and symbol areas (sq. ft.).
- Areas are grooved 1" beyond each edge for the following symbols:
Through Arrow= 14.8 sq. ft.
Large Left or Right Arrow= 21.9 sq. ft.
2 Arrow Combination Left (or Right) and Through= 34.9 sq. ft.
Wrong Way Arrow= 29.5 sq. ft.
Railroad Crossing Symbol= 69.8 sq. ft.
(For further information, refer to BDE Special Provision:
Grooving for Recessed Pavement Markings)

STATE OF ILLINOIS DEPARTMENT OF TRANSPORTATION	TYPICAL PAVEMENT MARKINGS			F.A.P RTE.	SECTION	COUNTY	TOTAL SHEETS	SHEET NO.
	SCALE: NOT TO SCALE			671	11RS-6;GRS-3;10RS-9	PEORIA	27	26
	SHEET 5 1 OF 62 SHEETS			DISTRICT 4 DETAIL NO. 780001				
	STA. TO STA.			ILLINOIS FED. AID PROJECT				

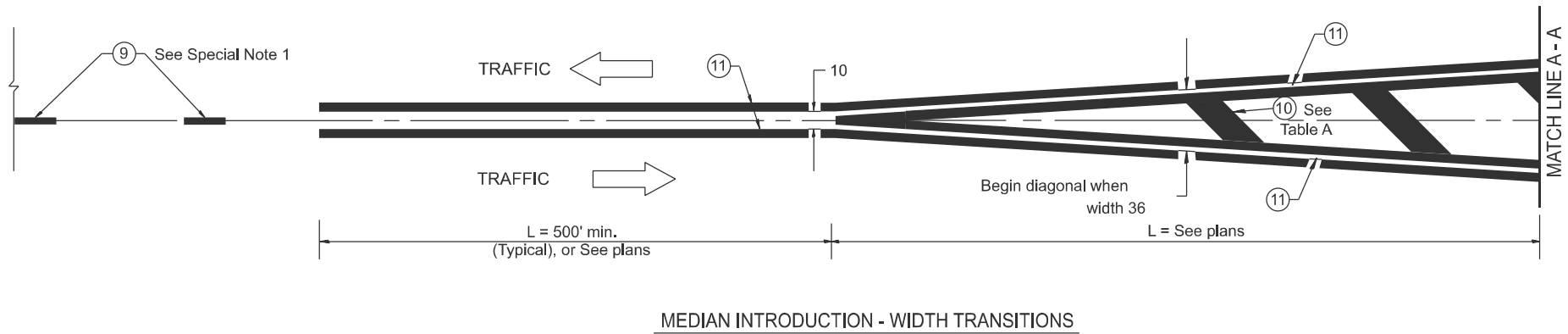


FLUSH PAVED MEDIAN: RESTRICTED LEFT TURN LANE

TABLE A

RECOMMENDED SPACING BETWEEN DIAGONAL LINES

SPEED LIMIT RANGE	CONTINUOUS	INTERSECTION CHANNELIZATION (Includes Width Transitions for Median and Left Turn Lane Introductions)
Less Than 30 mph	50'	15'
30 - 45 mph	75'	20'
Over 45 mph	150'	30'



All dimensions are in inches
unless otherwise noted.

F.A.P RTE.	SECTION	COUNTY	TOTAL SHEETS	SHEET NO.
671	11RS-6;GRS-3;10RS-9	PEORIA	27	27
DISTRICT 4 DETAIL NO. 780001		CONTRACT NO. 68J62		
ILLINOIS		FED. AID PROJECT		

MODEL: D4-780001 - 02
FILE NAME: c:\p\work\pav\green\dmd1089760\D4-780001.dgn

USER NAME = david.green	DESIGNED -	REVISED -
	DRAWN -	REVISED -
	CHECKED -	REVISED -
PLOT DATE = 5/15/2025	DATE -	REVISED -

STATE OF ILLINOIS
DEPARTMENT OF TRANSPORTATION

TYPICAL PAVEMENT MARKINGS

SCALE: NOT TO SCALE SHEET 6 2 OF 62 SHEETS STA. TO STA.