

F.A.P. RTE.	SECTION	COUNTY	TOTAL SHEETS	SHEET NO.
591	(15)TS-1	DEKALB	6	1
ILLINOIS		CONTRACT NO. 66067		

STATE OF ILLINOIS
DEPARTMENT OF TRANSPORTATION

DIVISION OF HIGHWAYS

**PROPOSED
HIGHWAY PLANS**

F.A.P. ROUTE 591 (US 34)
SECTION (15)TS-1

TRAFFIC SIGNAL HEAD REPLACEMENT
DEKALB COUNTY

C-93-089-14

INDEX OF SHEETS

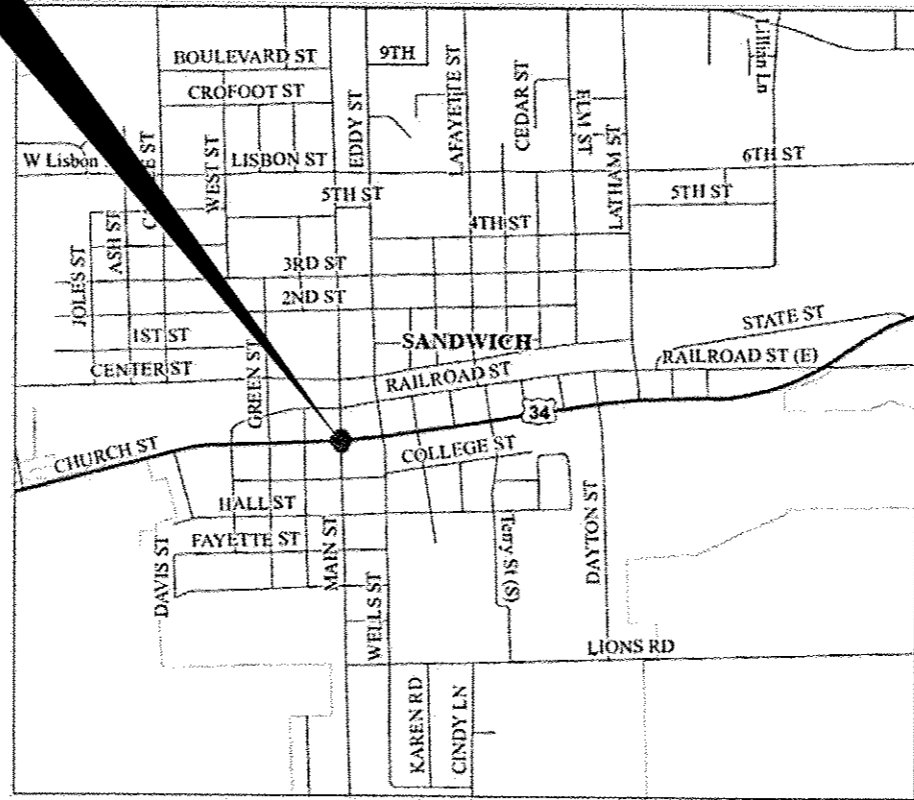
- COVER SHEET
- GENERAL NOTES
- SUMMARY OF QUANTITIES
- OFF-ROAD OPERATIONS 2L, 2W, 15' (4.5 m) TO 24" (600 mm) FROM PAVEMENT EDGE
- PAVEMENT EDGE
- OFF-ROAD OPERATIONS MULTILANE, 15' (4.5 m) TO 24" (600 mm) FROM PAVEMENT EDGE

HIGHWAY STANDARDS

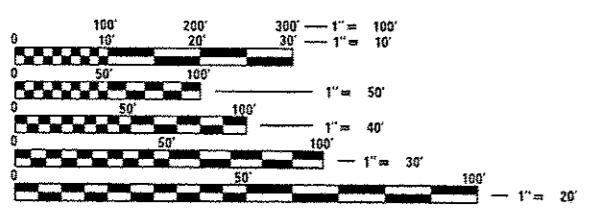
- 000001-06 STANDARD SYMBOLS, ABBREVIATIONS AND PATTERNS
- 001006 DECIMAL OF AN INCH AND OF A FOOT
- 701001-02 OFF-ROAD OPERATIONS 2L, 2W, MORE THAN 15' (4.5 m) AWAY FROM PAVEMENT EDGE
- 701006-05 OFF-ROAD OPERATIONS 2L, 2W, 15' (4.5 m) TO 24" (600 mm) FROM PAVEMENT EDGE
- 701701-09 URBAN LANE CLOSURE, MULTILANE INTERSECTION
- 701801-05 LANE CLOSURE, MULTILANE 1W OR 2W CROSSWALK OR SIDEWALK CLOSURE
- 701901-03 TRAFFIC CONTROL DEVICES
- 720001-01 SIGN PANEL MOUNTING DETAILS
- 857001-01 STANDARD PHASE DESIGNATION DIAGRAMS AND PHASE SEQUENCES
- 873001-02 TRAFFIC SIGNAL GROUNDING & BONDING
- 880006-01 TRAFFIC SIGNAL MOUNTING DETAILS



INTERSECTION OF
US 34 & MAIN STREET



POINT LOCATION



FULL SIZE PLANS HAVE BEEN PREPARED USING STANDARD ENGINEERING SCALES. REDUCED SIZED PLANS WILL NOT CONFORM TO STANDARD SCALES. IN MAKING MEASUREMENTS ON REDUCED PLANS, THE ABOVE SCALES MAY BE USED.

J.U.L.I.E.
JOINT UTILITY LOCATION INFORMATION FOR EXCAVATION
1-800-892-0123
OR 811

PROJECT ENGINEER: JOE KANNEL, P.E.
UNIT CHIEF: RON WOODSHANK
TOWNSHIP: SANDWICH
CONTRACT NO. 66D67

URBAN OTHER ARTERIAL FAP 591 (US 34) 2013		URBAN MINOR ARTERIAL MAIN STREET 2013	
ADT	10700	ADT	4100
P.V.	93.93%	P.V.	96.10%
S.U.	3.50%	S.U.	3.66%
M.U.	2.57%	M.U.	0.24%

STATE OF ILLINOIS
DEPARTMENT OF TRANSPORTATION
DIVISION OF HIGHWAYS

SUBMITTED May 15 2014
Paul Loete, P.E.
DEPUTY DIRECTOR OF HIGHWAYS, REGION ENGINEER

June 27 2014
John D. Baranelli, P.E.
acting ENGINEER OF DESIGN AND ENVIRONMENT

June 27 2014
Omer Osman, P.E.
DIRECTOR OF HIGHWAYS, CHIEF ENGINEER

PRINTED BY THE AUTHORITY
OF THE STATE OF ILLINOIS