

ROUTE	SECTION	COUNTY	TOT. SHTS.	SHT.
FAS 824	07-00194-00-RS	JEFFERSON	2	1
JEFFERSON COUNTY ROAD DISTRICT				

CONTRACT # 99334

INDEX OF SHEETS

- COVER SHEET, LOCATION MAP
- GENERAL NOTES, TYPICAL EXISTING AND PROPOSED CROSS-SECTIONS, SUMMARY OF QUANTITIES, BITUMINOUS MIXTURE BREAKDOWN, STRIPING, DETAILS OF SIDE ROADS, PRIVATE ENTRANCES, AND MAILBOX TURN-OUTS

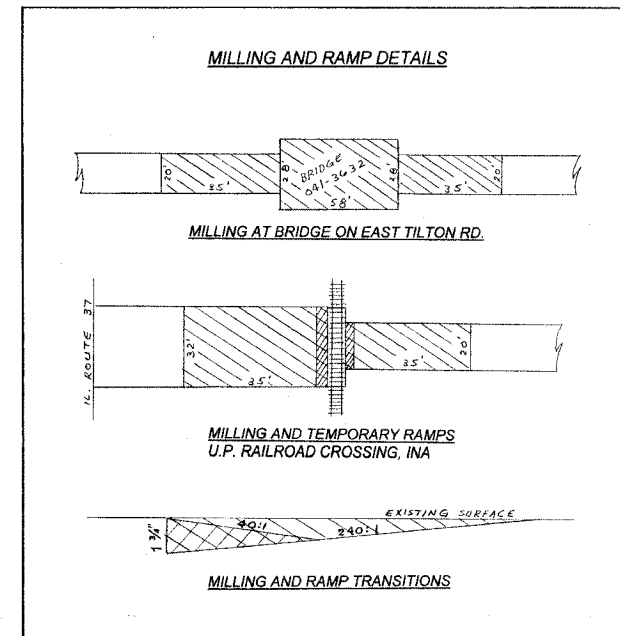
STANDARDS

- 000001-05
- 442201-03
- 701006-02
- 701306-01
- 701311-02
- 701336-04
- 701901
- 780001-01
- B.L.R. 21-7
- B.L.R. 22-5

# STATE OF ILLINOIS DEPARTMENT OF TRANSPORTATION

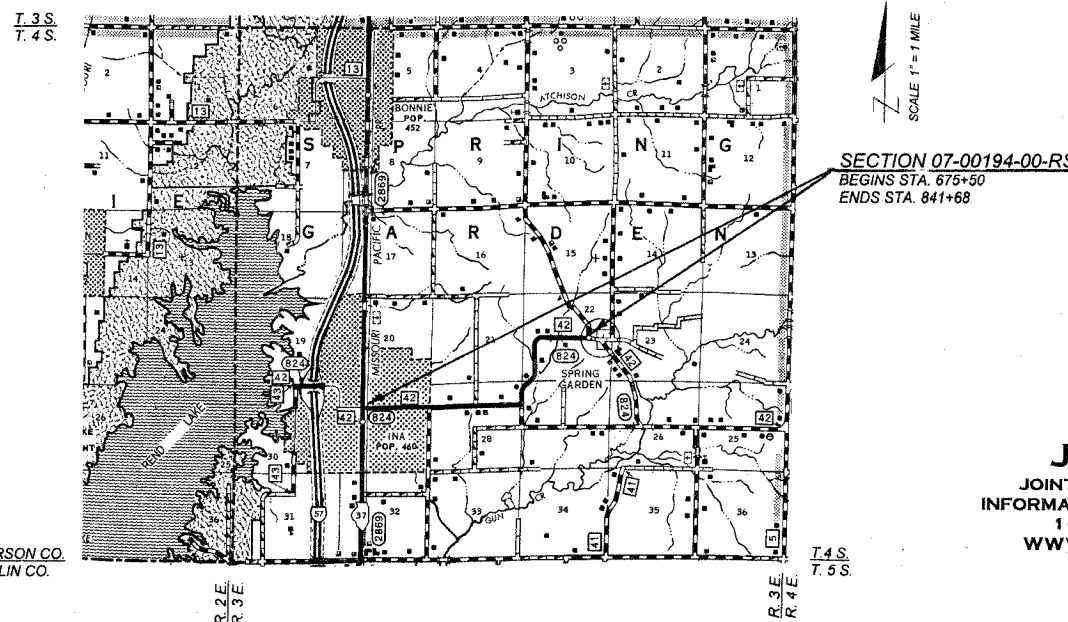
## PLANS FOR PROPOSED FEDERAL AID SECONDARY PROJECT

F.A.S. 824 C.H. 42  
SECTION 07-00194-00-RS  
JEFFERSON CO.  
PROJECT NO. RS-824 (106)  
JOB NO. C-99-539-07



SCHEDULE OF QUANTITIES			
Quantity	Unit	Item	Code Number
1662	FOOT	SHORT-TERM PVT MKG REM	XX003140
542	SQ YD	COLD MILLING	Z0010700
375	TON	AGG SURF CSE B	40200800
3876	GALLON	BIT MATLS PR CT	40600100
2230	TON	LEV BIND MM N50	40600625
91	SQ YD	TEMPORARY RAMP	40600990
4240	TON	HMA SC "C" N50	40603310
39	SQ YD	CL D PATCH T2 9	44201753
20	SQ YD	CL D PATCH T3 9	44201757
191	SQ YD	CL D PATCH T4 9	44201759
36929	SQ YD	AREA REF CR CON TR A	44300300
1080	TON	AGGREGATE SHLDS B	48101200
1	L SUM	MOBILIZATION	67100100
1	L SUM	TRAF CONT-PROT 701306	70100460
1	L SUM	TRAF CONT-PROT 701336	70100600
3324	FOOT	SHORT-TERM PVT MKING	70300100
45595	FOOT	THPL PVT MK LINE 4	78000200
1	L SUM	RR PROT LIABILITY INS	Z0048665

\* SPECIALTY ITEMS



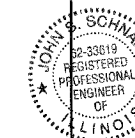
JEFFERSON CO.  
FRANKLIN CO.

**J. U. L. I. E.**  
JOINT UTILITY LOCATING  
INFORMATION FOR EXCAVATION  
1-800-892-0123  
WWW.ILLINOIS1CALL.COM

TOTAL SECTION LENGTH=16,618=3.147 MILES  
OMISSION=10'  
NET SECTION LENGTH=16,608=3.145 MILES

FUNCTIONAL CLASSIFICATION=LOCAL ROAD  
DESIGN SPEED =50 M.P.H.

APPROVED 3-12 2008



*John Schwanke*  
COUNTY ENGINEER  
JEFFERSON COUNTY HIGHWAY DEPT.  
750 OLD FAIRFIELD RD.  
MT. VERNON, IL 62864  
PH: (618)244-8031  
LICENSE EXP. 11-30-09

PASSED MARCH 20 2008

*Dennis W. Hillman*  
DISTRICT NINE ENGINEER OF  
LOCAL ROADS AND STREETS

Releasing for  
Bid based on  
limited review 3-26 2008

*Henry C. Lewis*  
DEPUTY DIRECTOR OF HIGHWAYS  
REGION FIVE ENGINEER

STATE OF ILLINOIS  
DEPARTMENT OF TRANSPORTATION

CONTRACT # 99334

STRIPING SCHEDULE			
NO PASSING ZONES		CENTERLINE	EDGELINE
WESTBOUND	EASTBOUND		
696+06 TO 707+22 718+02 TO 750+75	675+50 TO 683+62 704+02 TO 715+88 729+08 TO 758+47	675+50 TO 704+02 707+22 TO 729+08 750+75 TO 841+68	675+50 TO 841+68 PLACE EDGELINE 4" FROM EDGE OF SURFACE AND OMIT AT SIDEROADS
4389'	4937'	3533'	32736'
9326'		45,595'	

HOT-MIX ASPHALT SURFACE AND LEVEL BINDER	
MATERIAL PURPOSE	TONS
RESURFACING	5945
SIDEROADS, INTERSECTIONS, P.E., F.E.	525
<b>TOTAL</b>	<b>6470</b>

CONVERSION FACTOR=112 LBS./SQ. YD./INCH

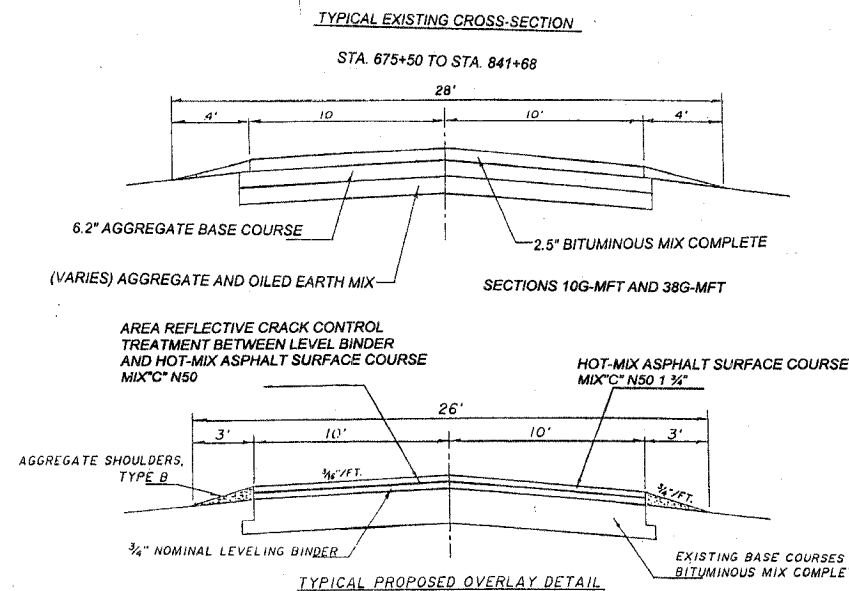
**GENERAL NOTES**

THIS SECTION SHALL CONSIST OF HOT-MIX ASPHALT SURFACE COURSE, MIX "C" N50 WITH AREA REFLECTIVE CRACK CONTROL TREATMENT, AGGREGATE SHOULDERS, STRIPING, RESURFACING OF DRIVES, FIELD ENTRANCES, ROAD INTERSECTIONS AND MAILBOX TURNOUTS. ALL WORK SHALL BE IN ACCORDANCE WITH THE PLANS, SPECIAL PROVISIONS AND THE STANDARD SPECIFICATIONS FOR ROAD AND BRIDGE CONSTRUCTION ADOPTED JAN. 1, 2007 BY THE ILLINOIS DEPARTMENT OF TRANSPORTATION, RECURRING SPECIAL PROVISIONS, AND THE SPECIAL PROVISIONS.

THE EXISTING GRADE, ALIGNMENT, DRAINAGE STRUCTURES, BASE AND SURFACE WERE CONSTRUCTED UNDER SECTION 10G-MFT AND SECTION 38G-MFT.

ALL STATIONS REFERRED TO HEREIN ARE IN REFERENCE TO SECTION 38G-MFT.

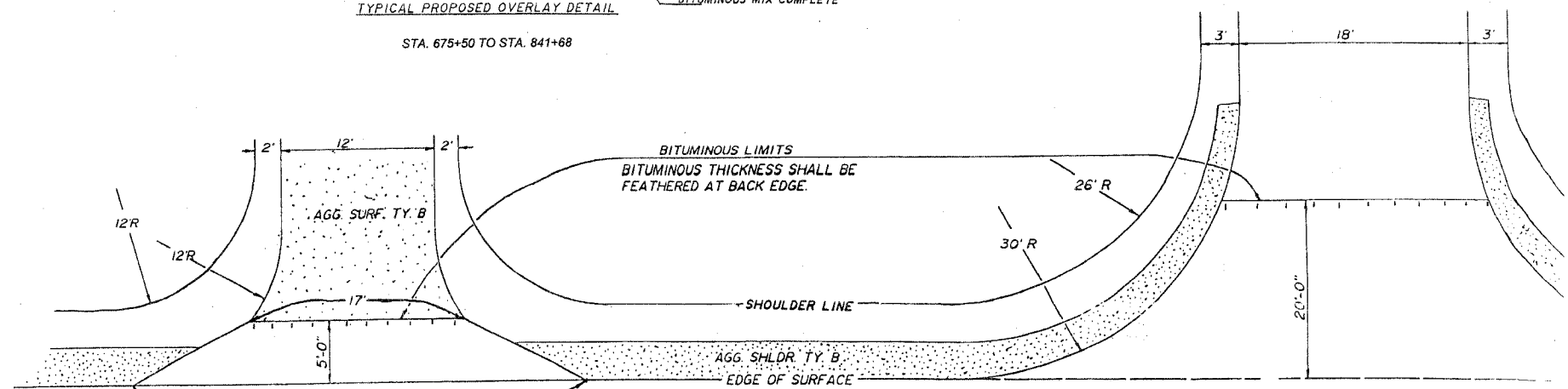
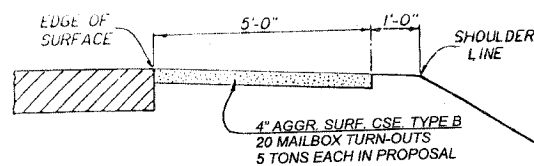
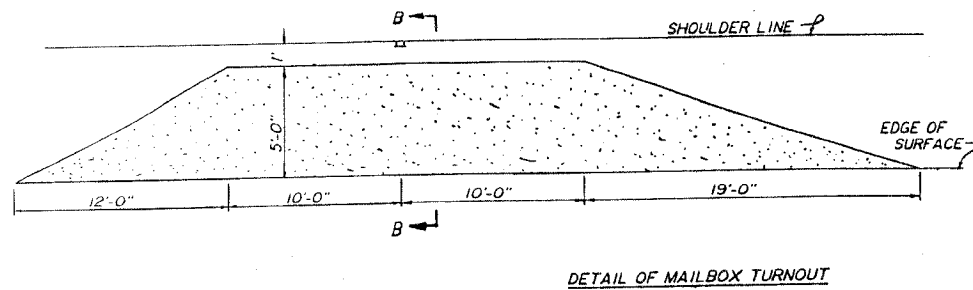
CLASS D PATCHING		
TYPE 2-9"	TYPE 3-9"	TYPE 4-9"
715+92 TO 716+05 4' WIDE 5.78 SQ. YD. E'BOUND LANE	704+65 TO 704+87.5 8' WIDE 20.00 SQ. YD. E'BOUND LANE	708+65 TO 709+56 4' WIDE 40.44 SQ. YD. W'BOUND LANE
765+95 TO 766+15 6' WIDE 13.33 SQ. YD. E'BOUND LANE		775+50 TO 776+10 5' WIDE 33.33 SQ. YD. E'BOUND LANE
779+61 TO 779+87 4' WIDE 11.56 SQ. YD. W'BOUND LANE		841+53 TO 841+68 70' WIDE AVERAGE 116.67 SQ. YD. BOTH LANES
801+00 TO 801+13 6' WIDE 8.67 SQ. YD. E'BOUND LANE		PATCH ONE LANE AT A TIME
39.34 SQ. YD.	20 SQ. YD.	191 SQ. YD.



STATION	ADT	PV	SU	MU
841+68 TO 836+93	1010	975	35	0
836+93 TO 749+28	900	845	45	10
749+28 TO 675+50	330	305	25	0

MAXIMUM GRADE = < 3%  
MINIMUM SIGHT DISTANCE = >400'  
YR. OF IMPROVEMENT DESIGN = 2008  
DESIGN SPEED = 50 M.P.H.

HOT-MIX ASPHALT THICKNESS = 2 1/2"  
M.S. = 1500 MINIMUM  
PRIME = 0.10 GALLONS / SQ. YD.



REPAIR ALL SIDEROADS AND ENTRANCES AS REQUIRED BY DIRECTION OF THE ENGINEER. 5 TONS EACH AGGREGATE SURFACE COURSE TYPE B ALLOWED IN THE PROPOSAL.

**DETAIL OF SIDE ROAD INTERSECTIONS (10 EACH)**

25 TONS EACH OF HOT-MIX ASPHALT SURFACE COURSE MIX "C" N50 ALLOWED IN THE PROPOSAL.

**DETAIL OF PRIVATE/FIELD ENTRANCE**

55 PRIVATE / FIELD ENTRANCES WITH 5 TONS HOT-MIX ASPHALT SURFACE COURSE MIX "C" N50 EACH ALLOWED IN THE PROPOSAL.