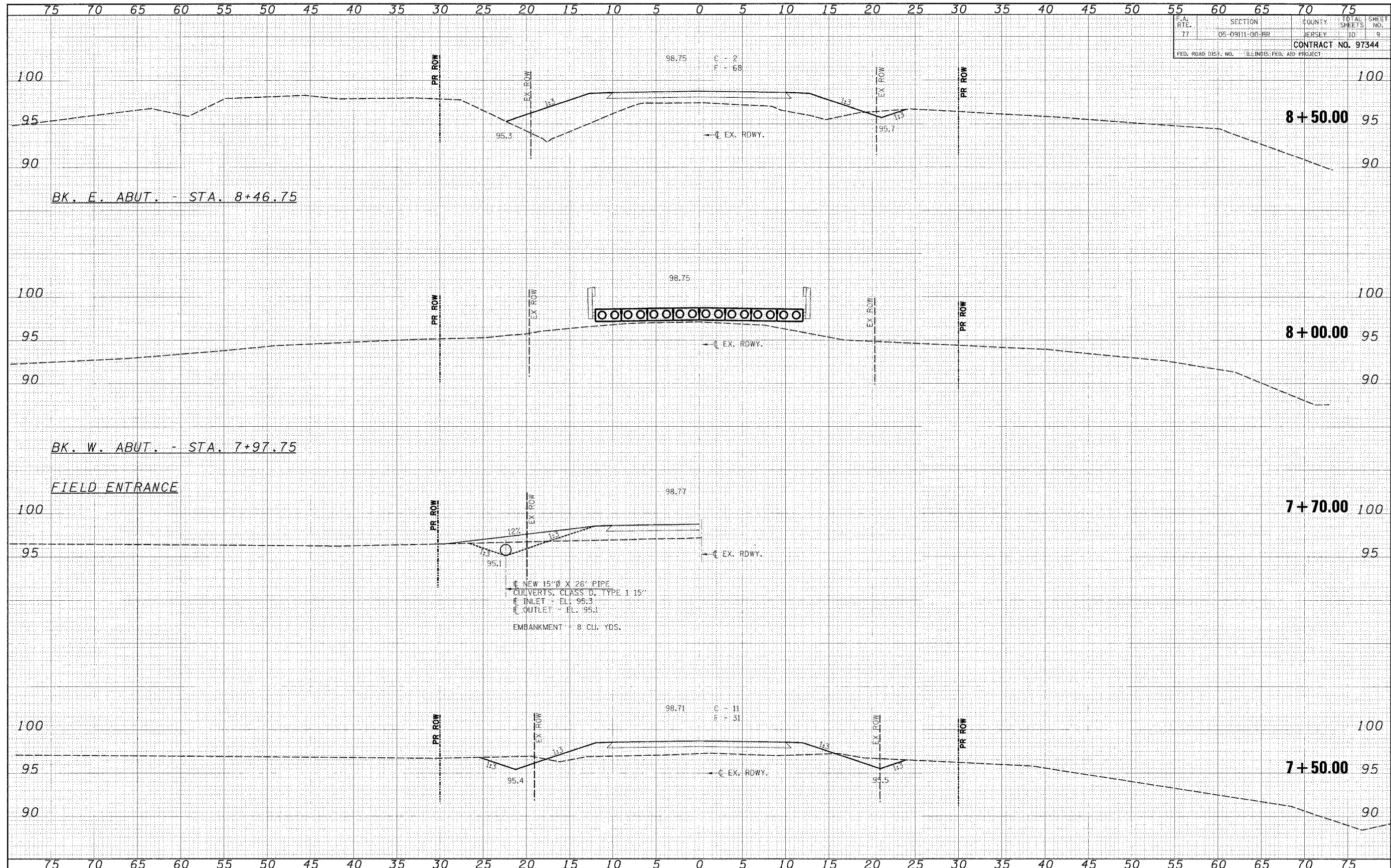


| | | | | |
|---|------------------------|---------------|-----------------|-------------|
| F.A. RTE. 77 | SECTION 05-09111-00-BR | COUNTY JERSEY | TOTAL SHEETS 10 | SHEET NO. 9 |
| CONTRACT NO. 97344 | | | | |
| FED. ROAD DIST. NO. ILLINOIS FED. AID PROJECT | | | | |



| | |
|------|----|
| DATE | BY |
| | |
| | |
| | |
| | |
| | |
| | |
| | |
| | |

| | |
|------|----|
| DATE | BY |
| | |
| | |
| | |
| | |
| | |
| | |
| | |
| | |

FILE NAME -
#FILE#

USER NAME - #15FR#
PLOT SCALE - #SCALE#
PLOT DATE - #DATE#

DESIGNED -
DRAWN -
CHECKED -
DATE -

REVISED -
REVISED -
REVISED -
REVISED -



Allen Henderson & Associates, Inc.
Civil and Structural Engineers Springfield, IL.
62703 Phone: (217)544-8033 IL Design Firm
No. 184-001907

CROSS SECTIONS

SCALE: 1" = 5' SHEET NO. 10 OF 10 SHEETS STA. 7+50.00 TO STA. 8+50.00

| | | | | |
|---|------------------------|---------------|-----------------|-------------|
| F.A. RTE. 77 | SECTION 05-09111-00-BR | COUNTY JERSEY | TOTAL SHEETS 10 | SHEET NO. 9 |
| CONTRACT NO. 97344 | | | | |
| FED. ROAD DIST. NO. ILLINOIS FED. AID PROJECT | | | | |