

ROUTE	SECTION	COUNTY	TOTAL SHEETS	SHEET NO.
F.A.S. 2710	05-00103-00-FP	JASPER	2	1
F.A.S. 2706	05-00104-00-FP	ILLINOIS	PROJECT RS-2710(102)	

CONTRACT #95548

STATE OF ILLINOIS
DEPARTMENT OF TRANSPORTATION
DIVISION OF HIGHWAYS

PLANS FOR PROPOSED
FEDERAL AID SECONDARY PROJECT
JASPER COUNTY
SECTION 05-00103-00-FP
SECTION 05-00104-00-FP
F.A.S. 2710 & 2706
COUNTY HIGHWAY 19 & 6
JOB NO. C-97-065-08
PROJECT NO. RS-2710(102)

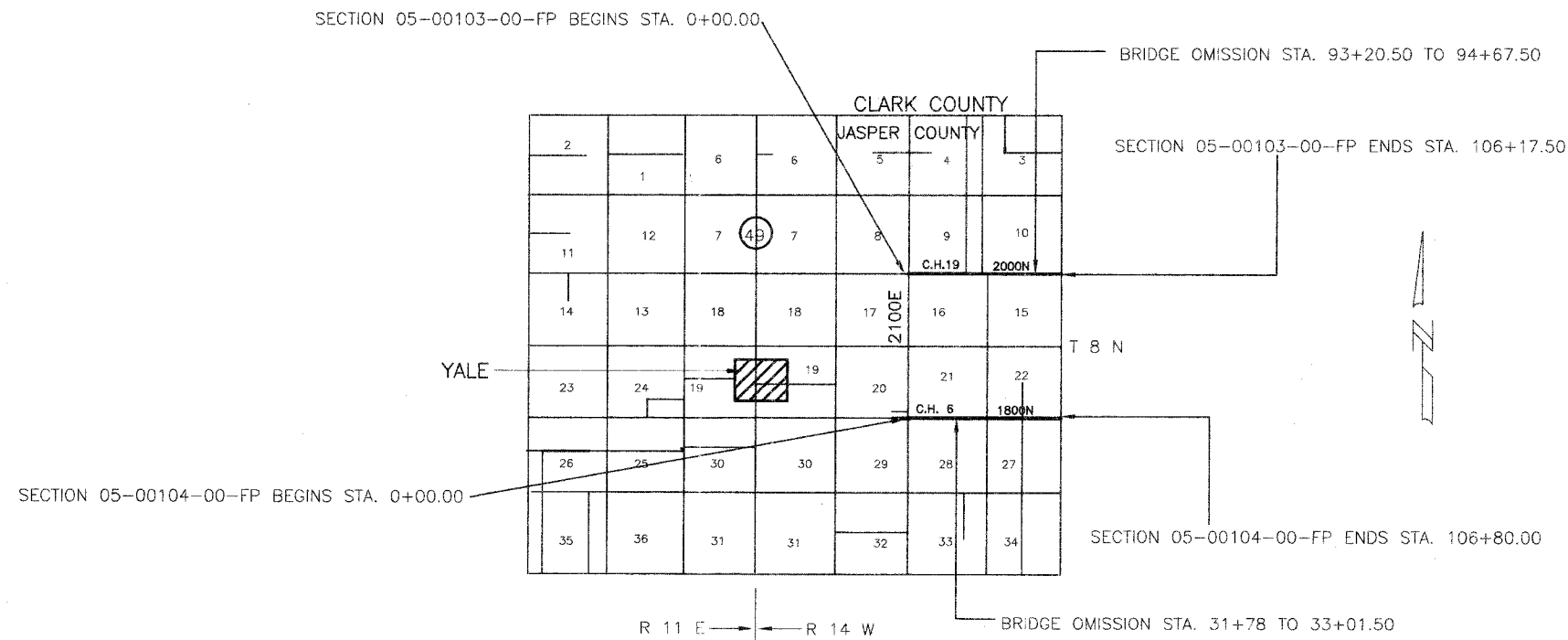
INDEX OF SHEETS

SHEET	ITEM
1	COVER SHEET
2	SUMMARY OF QUANTITIES
	STANDARD 000001-05
	STANDARD 701901
	BLR-22-5

THESE PLANS WERE PREPARED BY ME, OR A FULL TIME MEMBER OF MY STAFF, WORKING UNDER MY PERSONAL SUPERVISION.

BRIDGE OMISSIONS

STA. 93+20.50 TO 94+67.50
STA. 31+78 TO 33+01.50



Richard A. Pottman 3/11/08
ILLINOIS REG. PROF. ENG. 38893 DATE
LICENSE EXPIRES 11/30/09
12871 EAST STATE HWY 33
NEWTON, ILLINOIS 62448
PHONE 618-783-2915

APPROVED 3-11 2008

Richard A. Pottman
COUNTY ENGINEER

PASSED 3/28 2008

Marnie E. Keast
DISTRICT SEVEN ENGINEER OF
LOCAL ROADS & STREETS

Releasing For
Bid Based on
Limited Review

3/28 2008

Christina M. Reed
DEPUTY DIRECTOR OF HIGHWAYS,
REGION FOUR ENGINEER

STATE OF ILLINOIS
DEPARTMENT OF TRANSPORTATION

RURAL MAJOR COLLECTOR
ADT = 300 / 250
DESIGN SPEED = 40 MPH

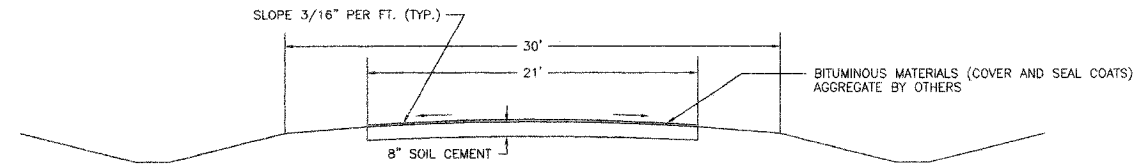
CONTRACT NO. 95548

Joint Utility Locating Information for Excavators
JULIE 1-800-892-0123

NET LENGTH SECTION 05-00103-00-FP = 10,470.50 Ft. = 1.983 Mi.
NET LENGTH SECTION 05-00104-00-FP = 10,556.50 Ft. = 2.000 Mi.
TOTAL = 3.983 Mi.

ROUTE	SECTION	COUNTY	TOTAL SHEETS	SHEET NO.
F.A.S. 2710	05-00103-00-FP	JASPER	2	2
F.A.S. 2706	05-00104-00-FP	ILLINOIS	PROJECT RS-2710(102)	
CONTRACT # 95548				

TYPICAL SECTION OF PROPOSED IMPROVEMENT

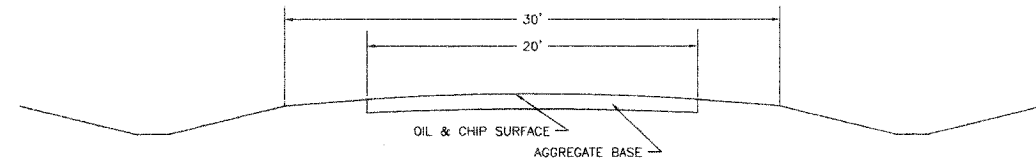


STA. 0+00.0 TO STA. 106+17.50
 STA. 0+00.0 TO STA. 106+80.00

PAVEMENT DESIGN DATA

CLASS IV ROAD
 SEC: 103 SEC: 104
 STRUCTURAL DESIGN TRAFFIC (S.D.T.) 2028 PC = 264 PC = 220
 SU = 27 SU = 23
 MU = 9 MU = 8
 MINIMUM SOIL SUPPORT: I.B.U. = 3
 PERCENT OF S.D.T. IN TRAFFIC LANE P = 50% P = 50%
 S = 50% S = 50%
 M = 50% M = 50%
 TRAFFIC FACTOR = 0.010 0.009
 STRUCTURAL NUMBER = 2.0 1.95
 PAVEMENT STRUCTURE MATERIALS:
 STAGE 1 - 8" SOIL-CEMENT BASE COURSE (500 PSI MIN.)
 A-2 SEAL COAT (AGGREGATE BY OTHERS)
 STAGE 2 - 2" CLASS I 21' WIDE (FUTURE)

TYPICAL SECTION OF EXISTING ROAD



STA. 0+00.0 TO STA. 106+17.50
 STA. 0+00.0 TO STA. 106+80.00

SECTION 05-00103-00-FP
 SUMMARY OF QUANTITIES

QUANTITY	UNIT	ITEM	CODE NUMBER
24,432	SQ. YD.	PROCESSING SOIL-CEMENT BASE COURSE 8"	35200300
16,110	100 WT.	CEMENT	35200500
14,660	GALLON	BITUMINOUS MATERIALS (COVER AND SEAL COATS)	40300300

SECTION 05-00104-00-FP
 SUMMARY OF QUANTITIES

QUANTITY	UNIT	ITEM	CODE NUMBER
24,634	SQ. YD.	PROCESSING SOIL-CEMENT BASE COURSE 8"	35200300
16,244	100 WT.	CEMENT	35200500
14,780	GALLON	BITUMINOUS MATERIALS (COVER AND SEAL COATS)	40300300

TOTAL PROJECT
 SUMMARY OF QUANTITIES

QUANTITY	UNIT	ITEM	CODE NUMBER
49,066	SQ. YD.	PROCESSING SOIL-CEMENT BASE COURSE 8"	35200300
32,354	100 WT.	CEMENT	35200500
29,440	GALLON	BITUMINOUS MATERIALS (COVER AND SEAL COATS)	40300300
1	LUMP SUM	MOBILIZATION	67100100