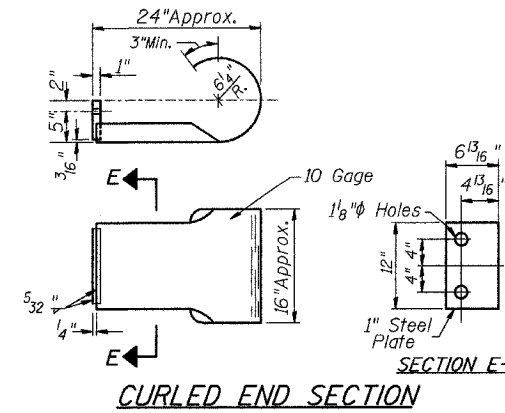
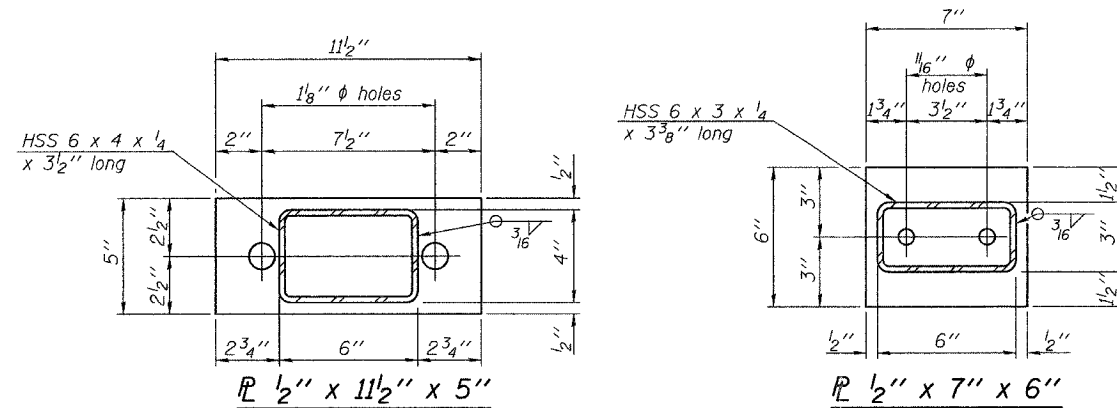
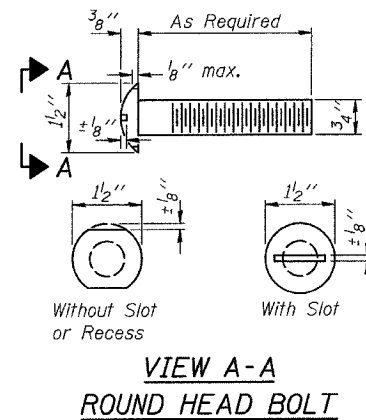


FOR RAIL POST SPACING SEE SH.#7 OF 10

ROUTE NO.	SECTION	COUNTY	DATE	SHEET	SHEET NO. 6 OF 10 SHEETS
CH 2	*	BROWN	21	12	
FED. ROAD DIST. NO. 7		ILLINOIS	PROJECT BRS-1582(106)		CONTRACT # 93469
*05-00064-00-BR					

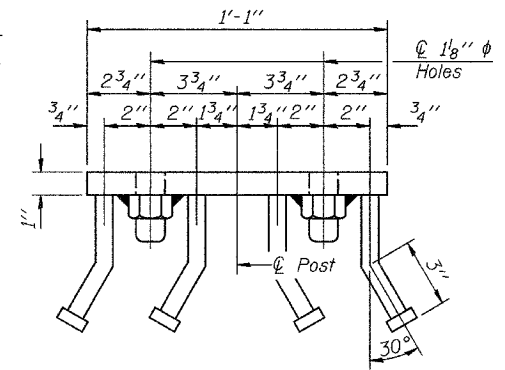
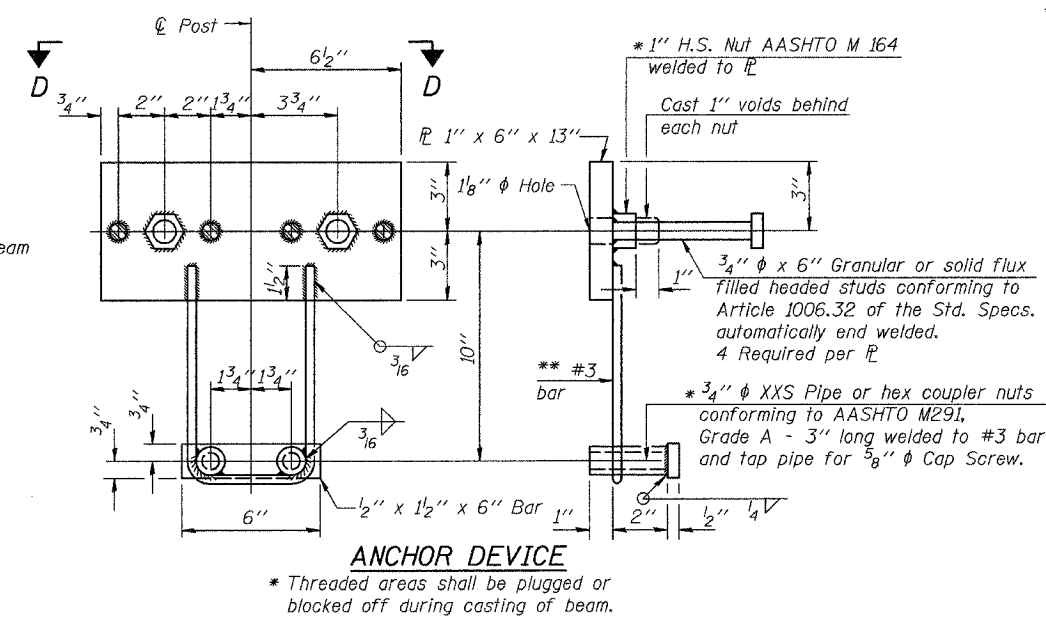
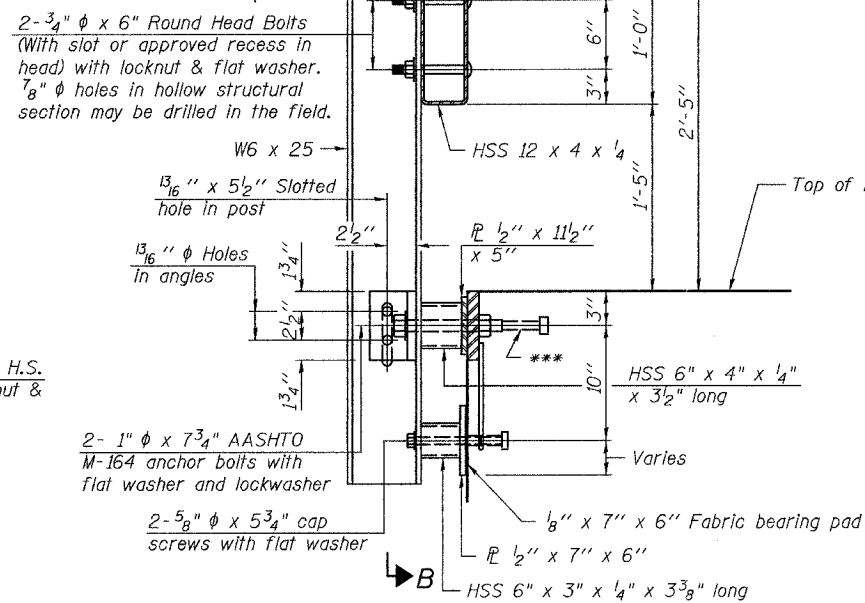
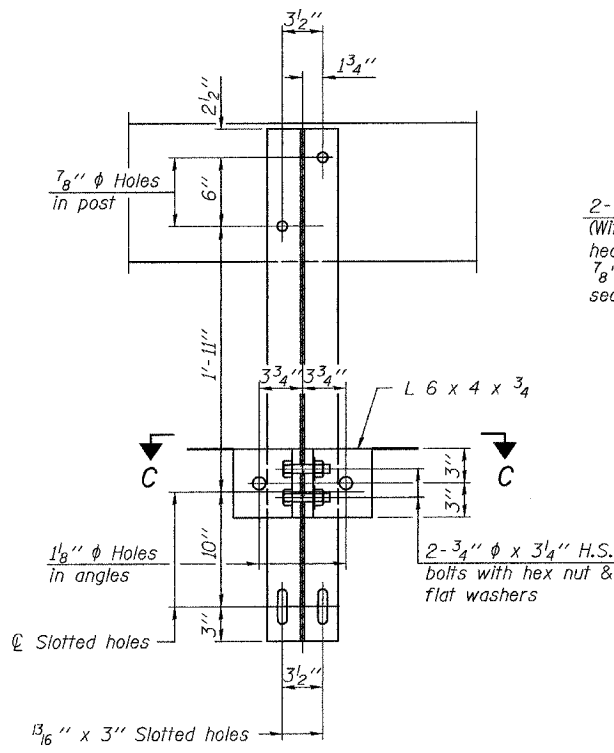


(2 Req'd) Cost Included with Steel Railing, Type S-1. Terminal Markers - Direct Applied shall be placed on end of each Curled End Section. (N.W. & S.E. Corners)

**NOTES**

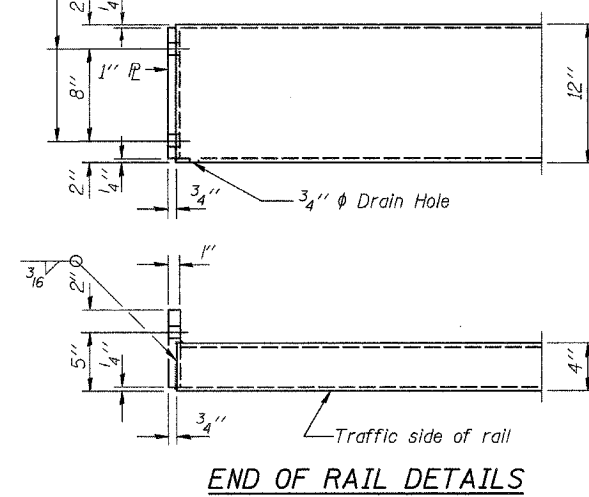
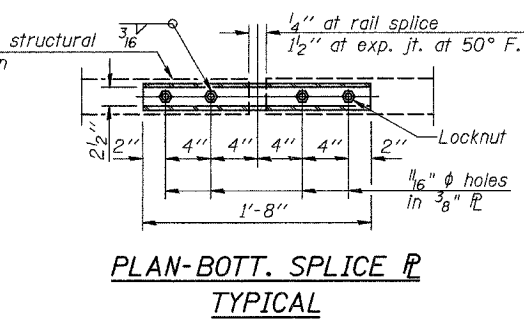
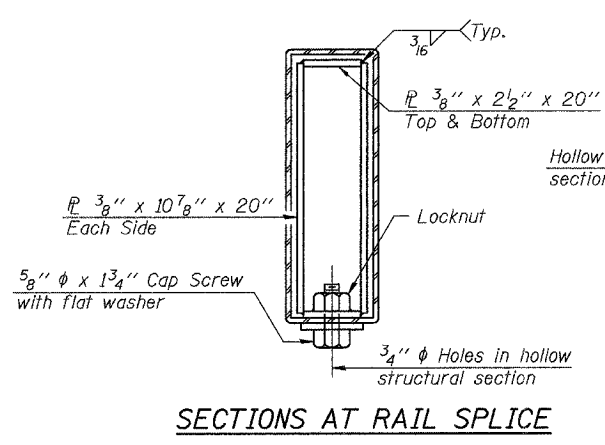
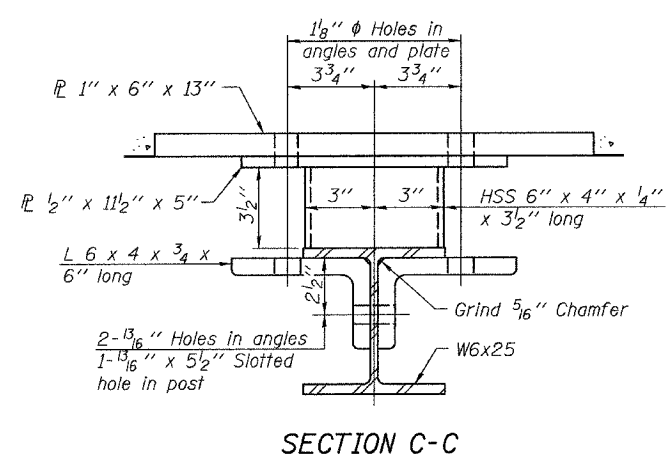
All field drilled holes shall be coated with an approved zinc rich paint before erection. For multi-span bridges, sufficient 1/4" x 6" x 1'-2" galvanized steel shims shall be provided to align rail between adjacent spans. Cost included with Steel Railing, Type S-1. All steel rail elements shall be galvanized according to Article 509.05 of the Standard Specifications.

\*\*\* The studs of the anchor devices shall be placed below the top reinforcement bars and the outermost longitudinal reinforcement bar shall be placed directly above the studs of the rail post anchor device.



\*\* Whenever the lower insert assemblies interfere with strand locations, the #3 bars shall be cut and adjusted in order to allow raising or lowering of the lower inserts. Maximum adjustment not to exceed 1/2 inch.

1/8 inch diameter Holes for 1 inch x 4 inch Round Head Bolts. Provide 2 flat washers & locknuts for Curled End Section connection & connection shown on Standard BLR 27.



**BILL OF MATERIAL**

Item	Unit	Quantity
Steel Railing, Type S-1	FOOT	195

**STEEL RAILING, TYPE S-1  
COUNTY HIGHWAY 2 OVER  
LITTLE MISSOURI CREEK  
SECTION 05-00064-00-BR  
BROWN COUNTY  
STATION 20+11.00**