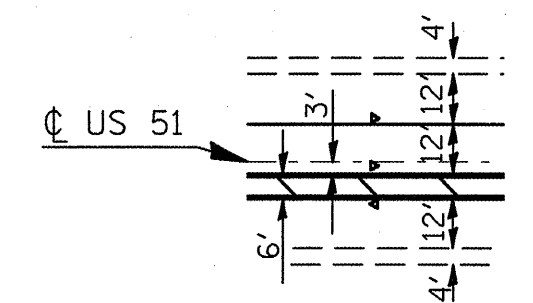


F.A.I. RTE.	SECTION	COUNTY	TOTAL SHEETS	SHEET NO.
•	••	•••	22	11
STA. _____ TO STA. _____		FED. ROAD DIST. NO. - ILLINOIS FED. AID PROJECT		

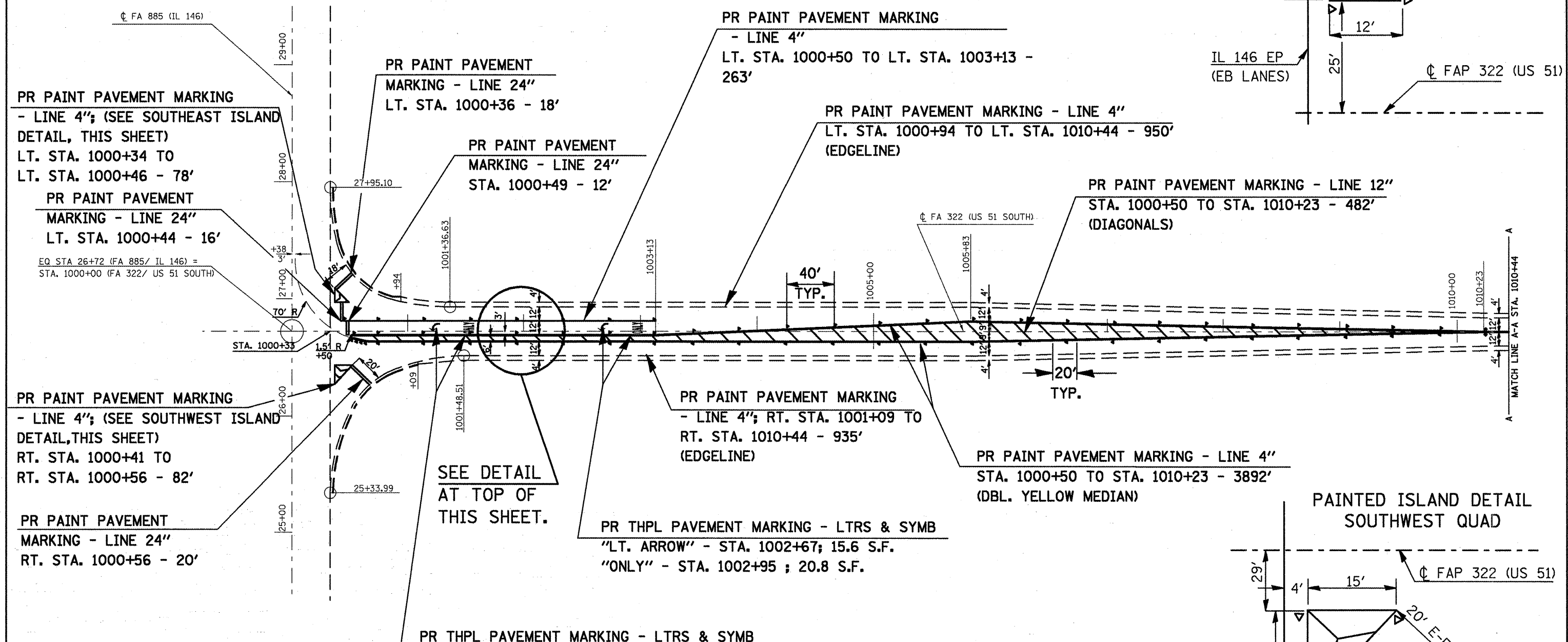
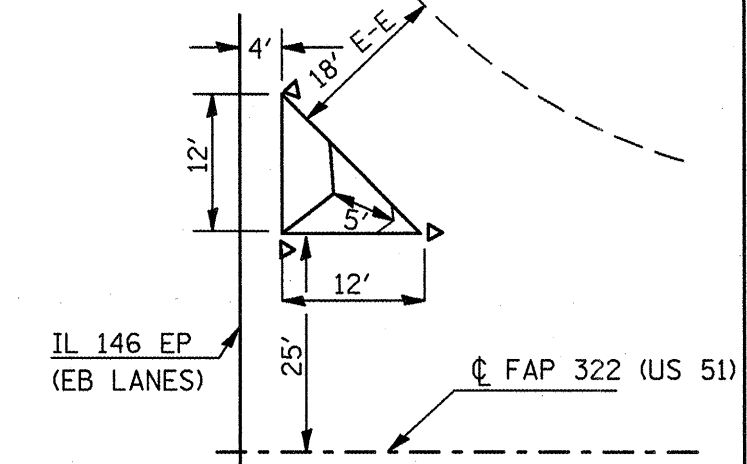
- FAS 1909 & FAP 322
- D9 PAVEMENT PRESERVATION FY08
- JACKSON AND UNION COUNTIES

DETAIL OF LANE WIDTHS

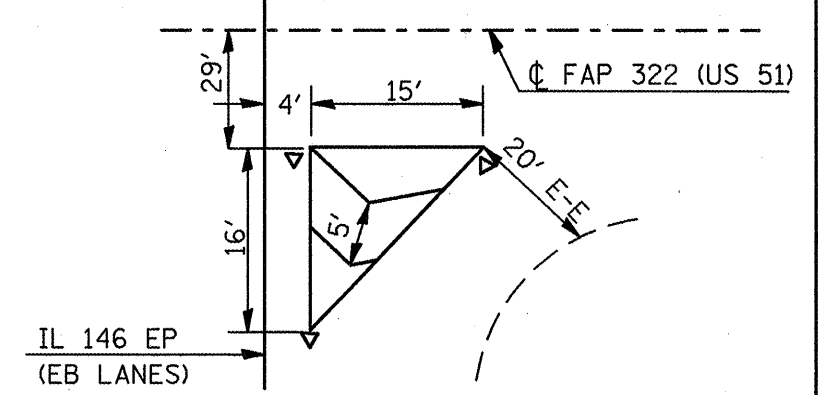


**PAVEMENT MARKING DETAIL
FAP 322 (US 51) LOCATION 1
STA. 1000+33 TO STA. 1010+44**

**PAINTED ISLAND DETAIL
SOUTHEAST QUAD**



**PAINTED ISLAND DETAIL
SOUTHWEST QUAD**



PLOT DATE = 1/24/2008
 FILE NAME = c:\pva\msh\78017\msh\78017.dwg
 PLOT SCALE = 8.078937 / IN
 USER NAME = mshpdr