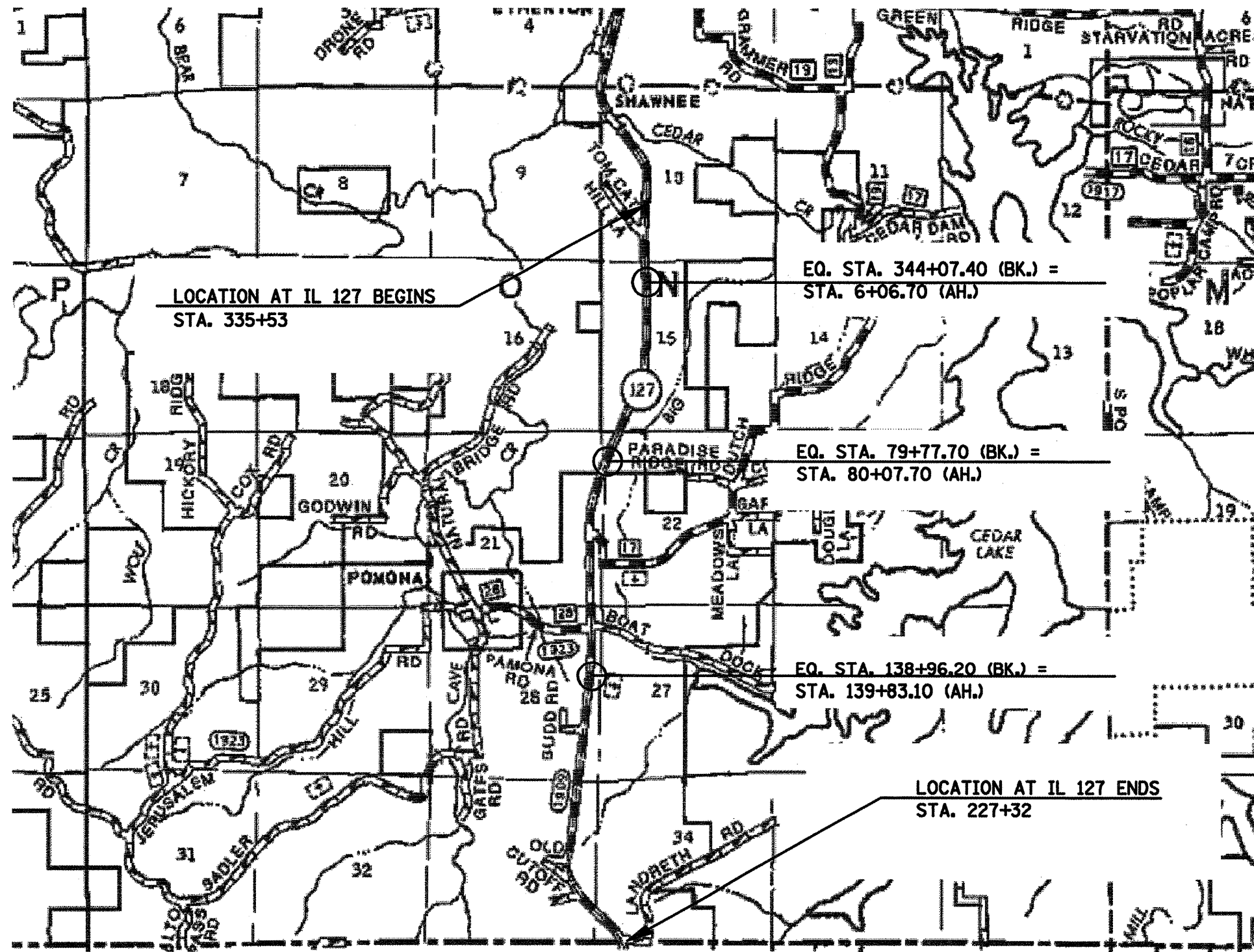


F.A.T. RTE.	SECTION	COUNTY	TOTAL SHEETS	SHEET NO.
*	**	***	22	16
STA. _____		TO STA. _____		
FED. ROAD DIST. NO. - ILLINOIS FED. AID PROJECT				

FAS 1909 (IL 127) LOCATION MAP  
FROM TOMCAT HILL LN. TO JACSKON/UNION CO. LINE

- FAS 1909 & FAP 322
- D9 PAVEMENT PRESERVATION FY08
- JACKSON AND UNION COUNTIES



PLOT DATE = 12/27/2007  
FILE NAME = c:\projects\78017\map3.dgn  
USER NAME = mcdonald