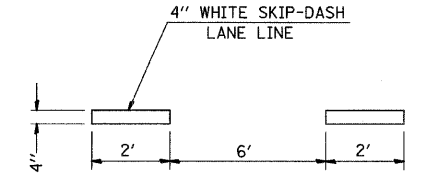
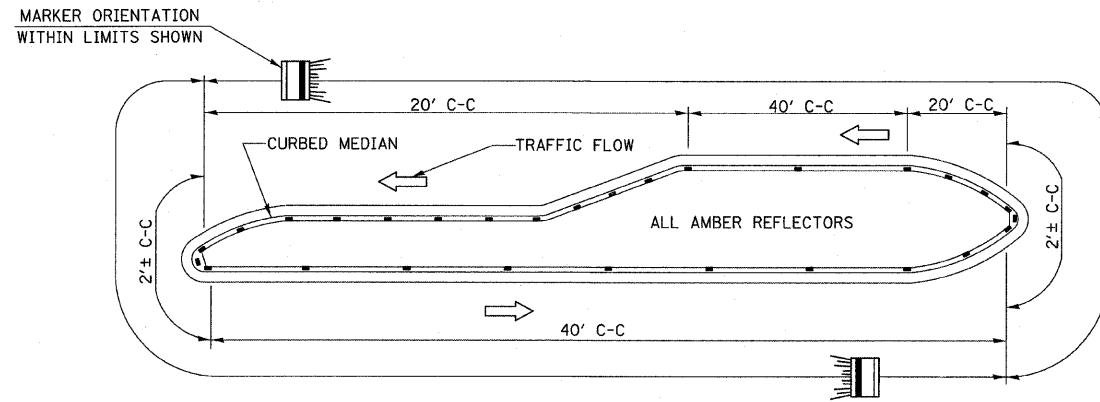


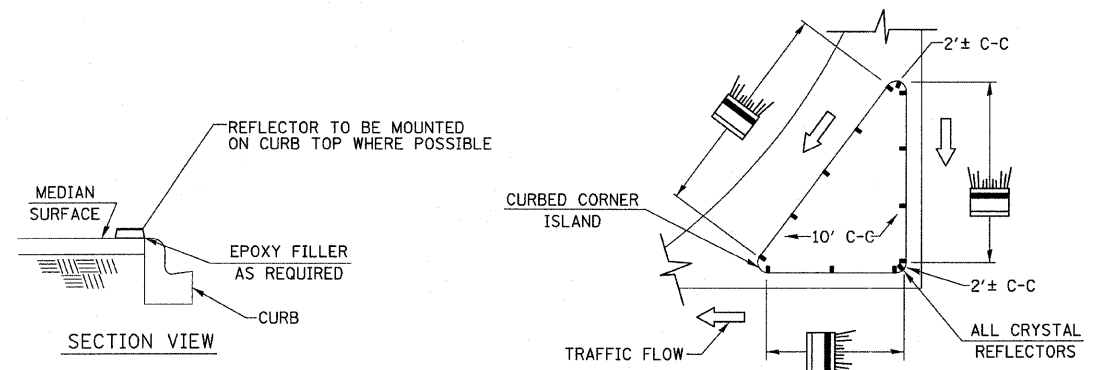
TYPICAL APPLICATION FOR MEDIAN STRIPING  
**DETAIL 'A'**  
 NOT TO SCALE



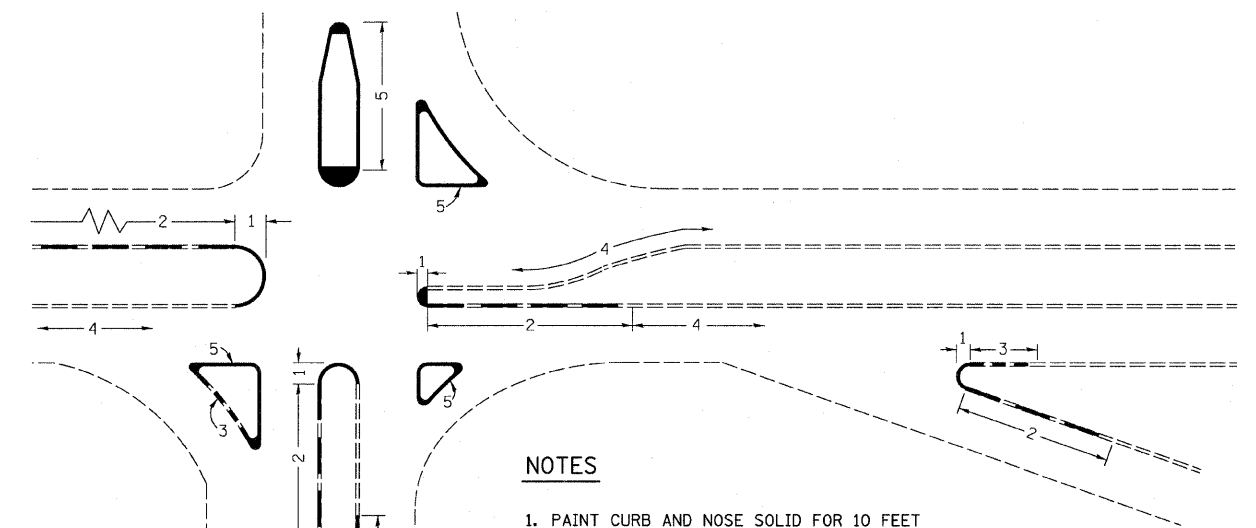
TYPICAL APPLICATION FOR ABBREVIATED WHITE SKIP-DASH LANE LINES  
**DETAIL 'B'**  
 NOT TO SCALE



- NOTES**
1. PRISMATIC REFLECTORS SHALL BE MONO-DIRECTIONAL AND POSITIONED SO THAT THE REFLECTIVE FACE IS FACING THE APPROACHING TRAFFIC.
  2. PRISMATIC REFLECTORS SHALL BE SECURED IN PLACE WITH AN EPOXY ADHESIVE.
  3. PRISMATIC REFLECTORS SHALL BE EITHER AMBER OR CRYSTAL IN COLOR.



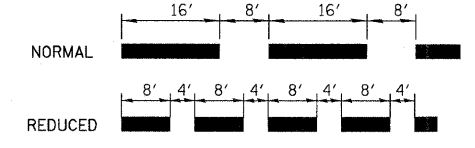
**TYPICAL PLACEMENT OF PRISMATIC REFLECTORS ON CURBS**  
 (NO SCALE)



**NOTES**

1. PAINT CURB AND NOSE SOLID FOR 10 FEET OR RADIUS OF NOSE, WHICHEVER IS GREATER.
2. PAINT MINIMUM OF 3 STRIPES IN DIRECTION OF TRAFFIC.
3. REDUCED SPACING USED TO OBTAIN 3 STRIPS MINIMUM.
4. STRIPING RECOMMENDED ONLY WHERE OPERATIONAL PROBLEMS DICTATE.
5. PAINT SOLID WHERE A MINIMUM OF 3 STRIPES CANNOT BE PLACED.

**SPACING**



**TYPICAL CURB MARKING**

FILE NAME = H:\P\25004\Technical Production\Civil\W07	USER NAME = #USER# 7\Microstation\pvmrk0a2.dgn	DESIGNED -	REVISD -	<b>STATE OF ILLINOIS DEPARTMENT OF TRANSPORTATION</b>	<b>PAVEMENT MARKING DETAIL</b>			F.A.U. RTE.	SECTION	COUNTY	TOTAL SHEETS	SHEET NO.
PLOT SCALE = 20.0000' / IN.	PLOT DATE = 3/14/2008	DRAWN -	REVISD -					9111	73-15TS	MADISON	64	34
		CHECKED -	REVISD -		SCALE: NO SCALE	SHEET NO. 4 OF 4 SHEETS	STA.	TO STA.	CONTRACT NO. 76B22			
		DATE -	REVISD -		FED. ROAD DIST. NO. ILLINOIS FED. AID PROJECT							