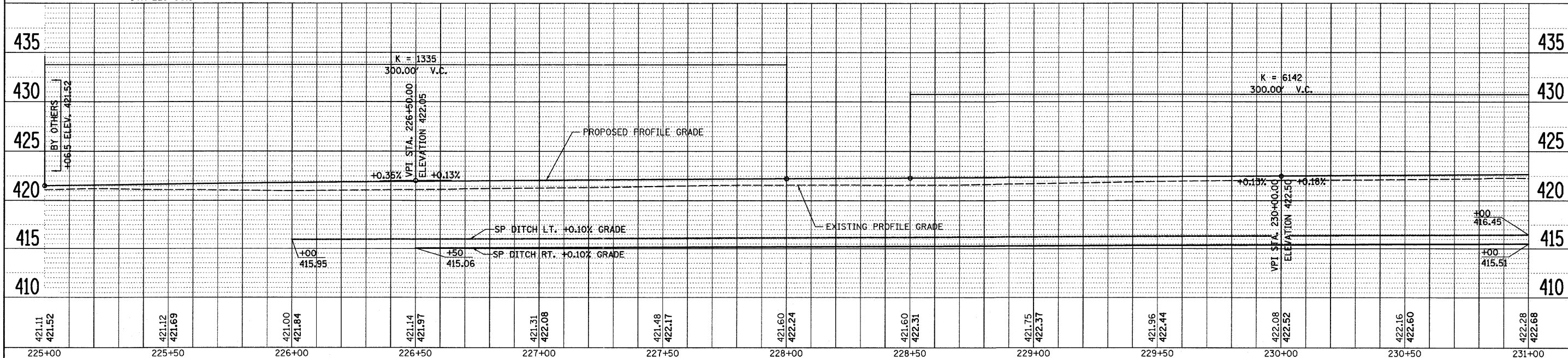
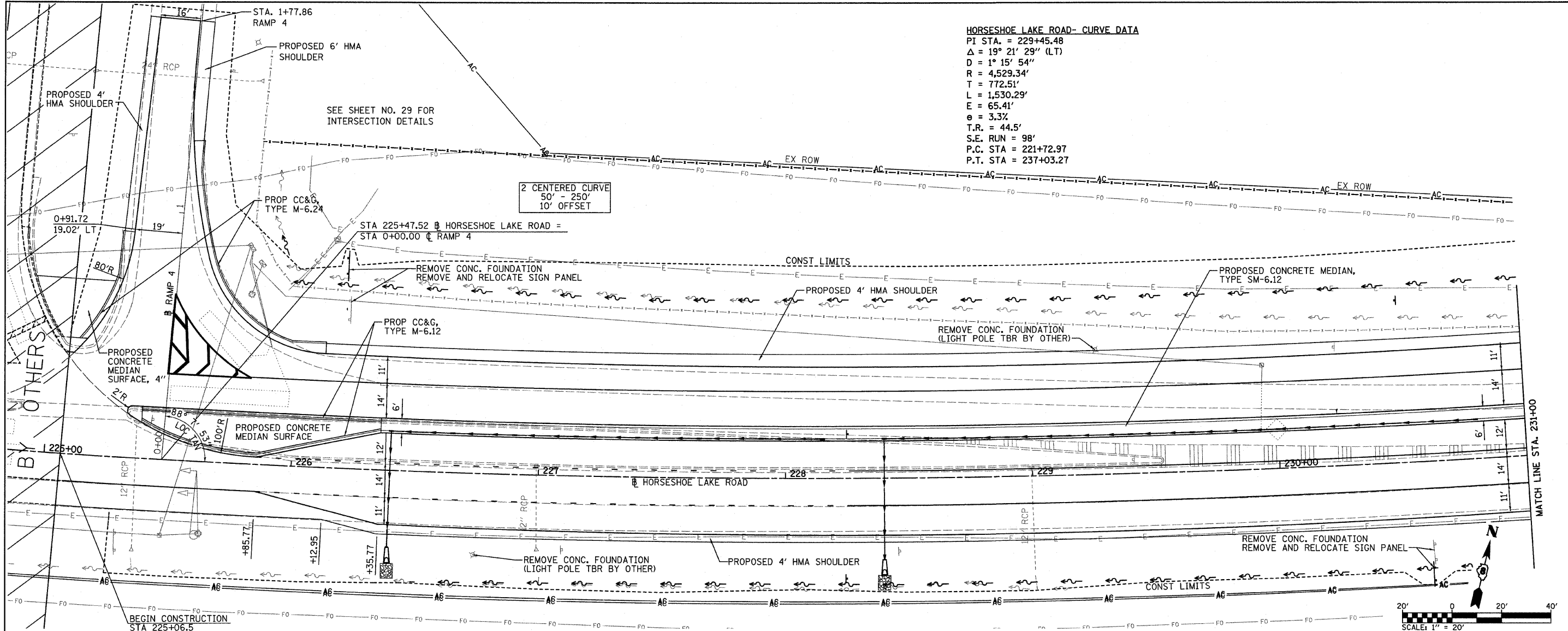


HORSESHOE LAKE ROAD- CURVE DATA

PI STA. = 229+45.48
 $\Delta = 19^\circ 21' 29''$ (LT)
 $D = 1^\circ 15' 54''$
 $R = 4,529.34'$
 $T = 772.51'$
 $L = 1,530.29'$
 $E = 65.41'$
 $e = 3.3\%$
 $T.R. = 44.5'$
 $S.E. RUN = 98'$
 P.C. STA = 221+72.97
 P.T. STA = 237+03.27



PLAN	DATE
BY	
CHECKED	
DATE	
NO.	
FILE NAME	

PROFILE	DATE
BY	
CHECKED	
DATE	
NO.	
FILE NAME	

FILE NAME = H:\P\25084\Technical Production\Civil\W017	USER NAME = #USER#	DESIGNED -	REVISED -	STATE OF ILLINOIS DEPARTMENT OF TRANSPORTATION	HORSESHOE LAKE ROAD PLAN & PROFILE SHEETS	F.A.U. RTE. 9111	SECTION 73-15TS	COUNTY MADISON	TOTAL SHEETS 64	SHEET NO. 13	
PLOT SCALE = 20.0000' / IN.	PLOT DATE = 3/14/2008	DRAWN -	REVISED -			SCALE: 1" = 20'	SHEET NO. 1 OF 3 SHEETS	STA. 225+00.00 TO STA. 231+00.00	FED. ROAD DIST. NO.	ILLINOIS FED. AID PROJECT	CONTRACT NO. 76B22
		CHECKED -	REVISED -								
		DATE -	REVISED -								