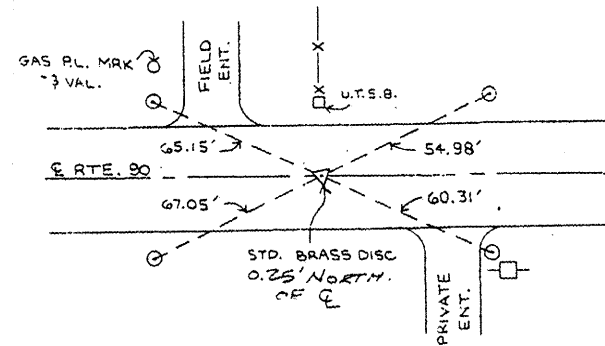
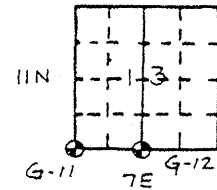


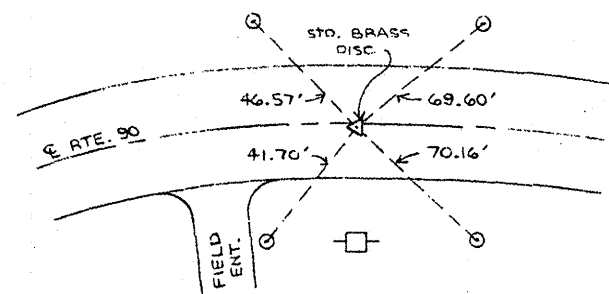
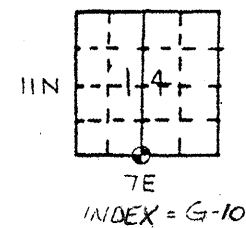
ROUTE		SECTION	COUNTY	SHEET	
MKD.	FAP	103 RS-3	PEORIA	TOTAL	NO.
IL 90	661			21	15

D-94-068-02

CONTRACT # 68259



**SOUTH QUARTER CORNER OF SECTION 13
@ 0.25' LT OF STA. 84+81.71**



**SOUTH QUARTER CORNER OF SECTION 14
@ 1.31' RT OF STA. 31+57.41**
NOTE: DISK IS 1.3' SOUTH OF CL



SETTING OF DISK NOTES

ALL TIES FOR THESE SECTIONS, AS SHOWN, HAVE BEEN LOCATED IN THE FIELD AND SHALL BE VERIFIED BY A LICENSED LAND SURVEYOR PRIOR TO ANY MILLING OPERATIONS. THE SECTION CORNER SHALL BE RESET AT THE DIRECTION OF A LICENSED LAND SURVEYOR AFTER ALL PAVING AND STRIPING OPERATIONS ARE COMPLETE. IF ANY DIMENSIONS HAVE BEEN CHANGED, IT SHALL BE THE RESPONSIBILITY OF THE SURVEYOR TO FILE A NEW MONUMENT RECORD IN THE PEORIA COUNTY COURTHOUSE.

A COPY OF ALL DRAWINGS OR MONUMENT RECORDS PRODUCED FROM THIS PROJECT SHALL BE SENT TO THE CHIEF OF SURVEYS, ILLINOIS DEPARTMENT OF TRANSPORTATION DISTRICT 4, PEORIA.

THE SUPPLYING, DRILLING, SETTING OF DISKS, PROFESSIONAL SERVICES, LABOR, AND ANY ADDITIONAL WORK REQUIRED TO PERFORM THIS WORK SHALL BE PAID FOR UNDER PAY ITEM 66700305 AND IN ACCORDANCE WITH CONTRACT SPECIAL PROVISIONS.

ILLINOIS DEPARTMENT OF TRANSPORTATION
RECOVERY TIES
IL 90
NOT TO SCALE