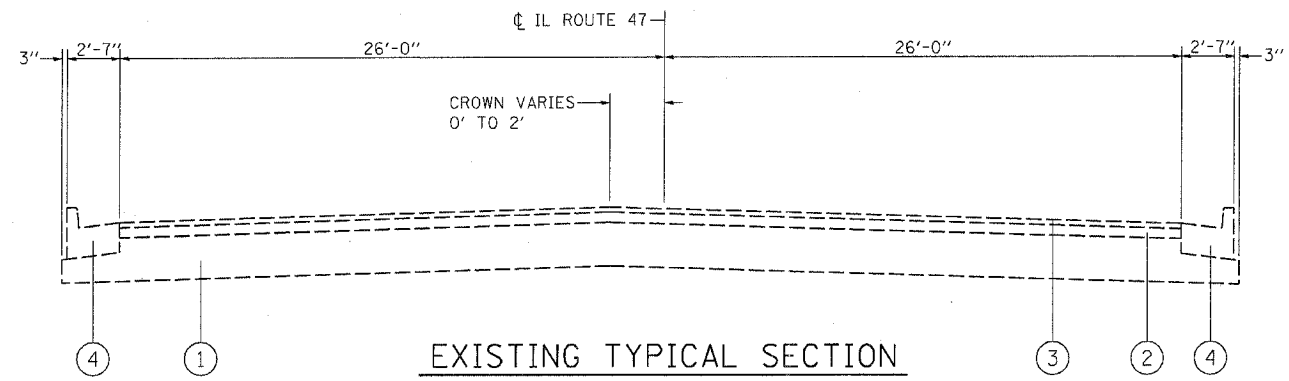
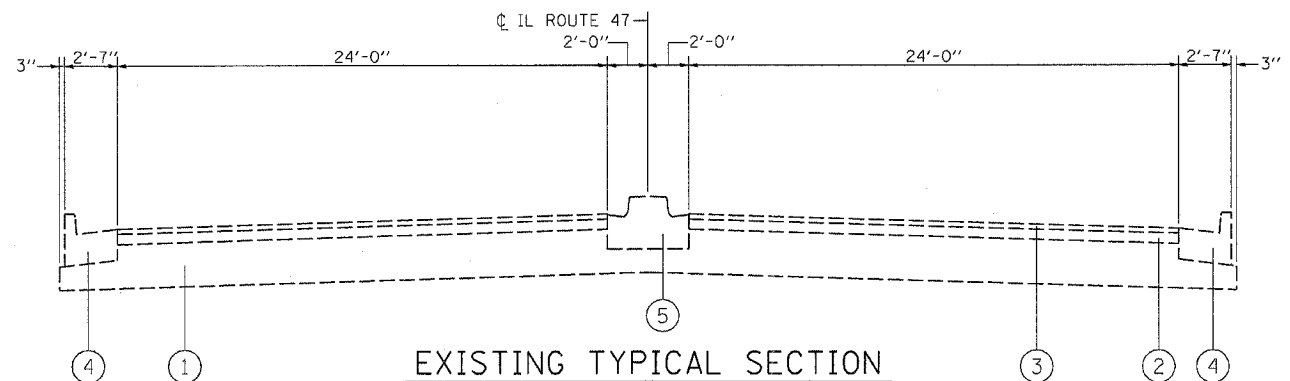


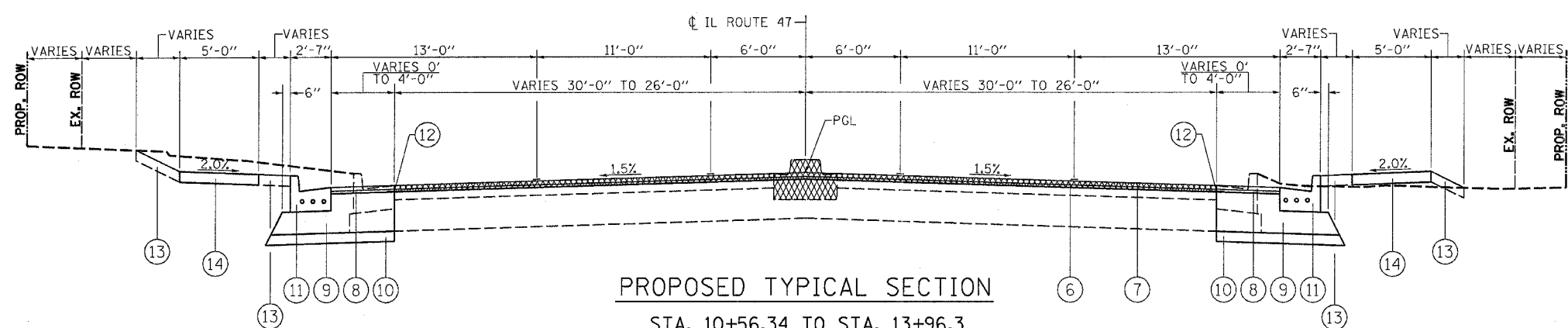
F.A.P. RTE.	SECTION	COUNTY	TOTAL SHEETS	SHEET NO.
326	(111CS) W&RS-21	GRUNDY	85	13
STA. TO STA.		ILLINOIS FED. AID PROJECT		



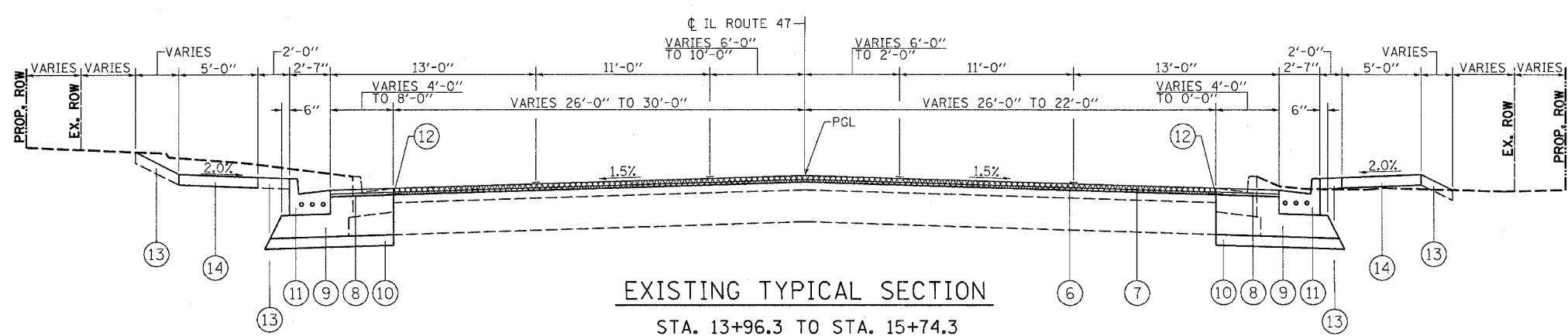
EXISTING TYPICAL SECTION
STA. 10+56.34 TO STA. 28+20.1



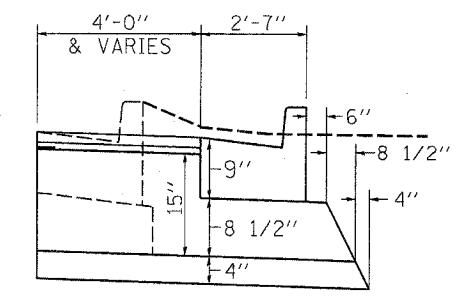
EXISTING TYPICAL SECTION
STA. 28+20.1 TO STA. 31+10.0



PROPOSED TYPICAL SECTION
STA. 10+56.34 TO STA. 13+96.3
STA. 21+34.9 TO STA. 29+10.0



EXISTING TYPICAL SECTION
STA. 13+96.3 TO STA. 15+74.3
STA. 19+74.9 TO STA. 21+34.9



WIDENING DETAIL
(REBAR OMITTED FROM C&G FOR CLARITY)

- LEGEND**
- ① EXISTING 13" BITUMINOUS BASE COURSE
 - ② EXISTING 3" BITUMINOUS BINDER COURSE
 - ③ EXISTING 1 1/2" BITUMINOUS CONCRETE SURFACE COURSE
 - ④ EXISTING COMBINATION CONCRETE CURB AND GUTTER TY. B - 6.24
 - ⑤ EXISTING CONCRETE MEDIAN TY. SB - 6.12 *
 - ⑥ HMA SURFACE REMOVAL, VARIABLE DEPTH **
 - ⑦ PROPOSED 1 1/2" HMA SURFACE COURSE
 - ⑧ PROPOSED 1" LEVELING BINDER COURSE
 - ⑨ PROPOSED HMA BASE CSE. WID., VARIABLE DEPTH ***
 - ⑩ PROPOSED SUB-BASE GRANULAR MATERIAL, TYPE A 4"
 - ⑪ PROPOSED COMBINATION CONCRETE CURB AND GUTTER TY. B - 6.24
 - ⑫ STRIP REFLECTIVE CRACK CONTROL TREATMENT
 - ⑬ TOPSOIL FURNISH AND PLACE, 4" (TYP.)
 - ⑭ PROPOSED PCC SIDEWALK 4"

- * RAISED MEDIAN STA. 28+20.1 TO 31+10.0 TO BE REMOVED
- ** VARIABLE DEPTH MILLING (2.5" AVG.) TO BE USED TO RELOCATE CROWN TO MIDDLE OF ROADWAY AS NECESSARY (SEE CROSS SECTIONS FOR EXISTING CROWN LOCATION)
- *** THE TOP LIFT OF BASE COURSE WIDENING SHALL BE A POLYMERIZED HMA IL 19.0 N90 BINDER MIX - MINIMUM THICKNESS OF 2 1/4".

REVISIONS	
NAME	DATE

ILLINOIS DEPARTMENT OF TRANSPORTATION
EXISTING AND PROPOSED TYPICAL SECTIONS
IL ROUTE 47
GRUNDY COUNTY

SCALE: NTS
DATE: 08/2007

DRAWN BY: KHH
CHECKED BY: FML

PLOT DATE = Feb 06, 2008 - 08:45:35 AM
 FILE NAME = s:\projects\66720\consult\phase 2\typical sections sheets.dgn
 PLOT SCALE = 28.000 / 1" IN.
 USER NAME = schmeberg