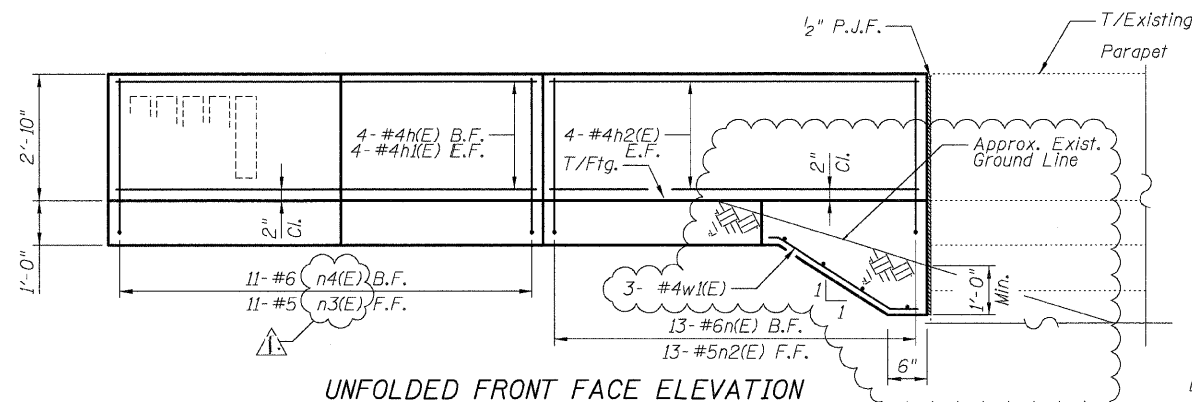


DETAIL A REINFORCEMENT SCHEDULE AND BILL OF MATERIAL

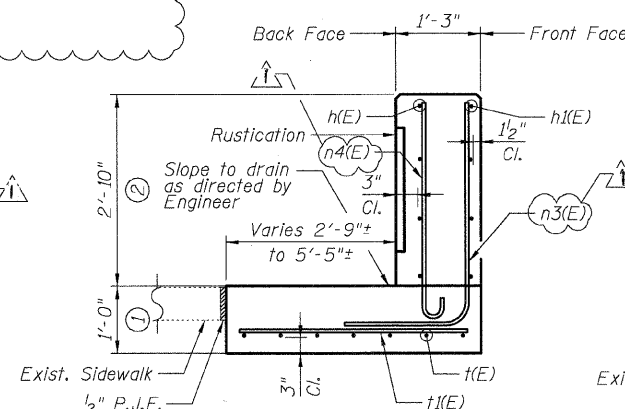
Bar	No.	Size	Length	Shape
h(E)	4	#4	9'-2"	
h1(E)	4	#4	11'-0"	
h2(E)	8	#4	12'-4"	
n(E)	13	#6	5'-6"	
n2(E)	13	#5	4'-0"	
n3(E)	11	#5	5'-6"	
n4(E)	11	#6	4'-0"	
t(E)	7	#6	6'-2"	
t1(E)	7	#6	6'-4"	
t2(E)	13	#6	2'-2"	
w(E)	3	#4	8'-4"	
w1(E)	3	#4	3'-8"	
Item		Unit	Qty.	
Concrete Structures		Cu. Yd.	2.8	
Concrete Superstructure		Cu. Yd.	3.1	
Reinforcement Bars, Epoxy Coated		Pound	610	
Rustication Finish		Sq. Ft.	17	
Protective Coat		Sq. Yd.	14	

NOTES:

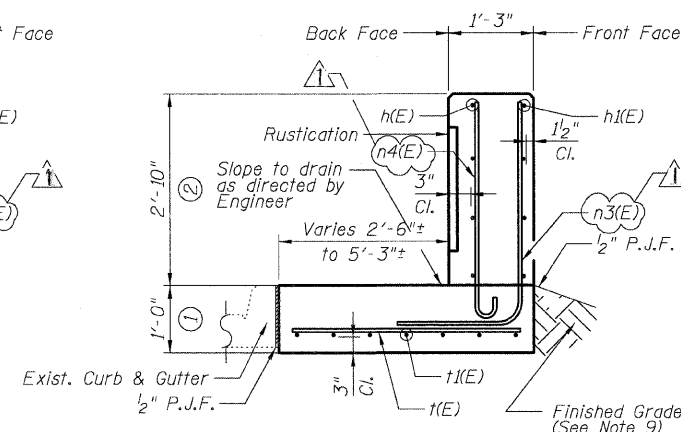
- All stations and offsets measured from S. La Salle St. E.
- Back Face is face adjacent to Frontage Rd. and Front Face is face adjacent to Expressway.
- Concrete: $f'c = 3500$ psi
- Provide California Finish on top of foundation between stem and Frontage Road. See Roadway Details.
- At locations where Fluted Knee Wall abuts a rigid structure, a 2" thick Preformed Expansion Joint Filler conforming to the shape of the structure shall be installed between the Fluted Knee Wall and the structure.
- Apply Protective Coat to top and back face of stem and top of Frontage Road side of foundation.
- For Fluted Knee Wall standard details, see Sheet SD-1
- B.F. = Back Face (Frontage Road Side)
F.F. = Front Face (Expressway Side)
E.F. = Each Face
- Shape finished grade as required to match existing conditions.
- P.J.F. included in cost of concrete structures.



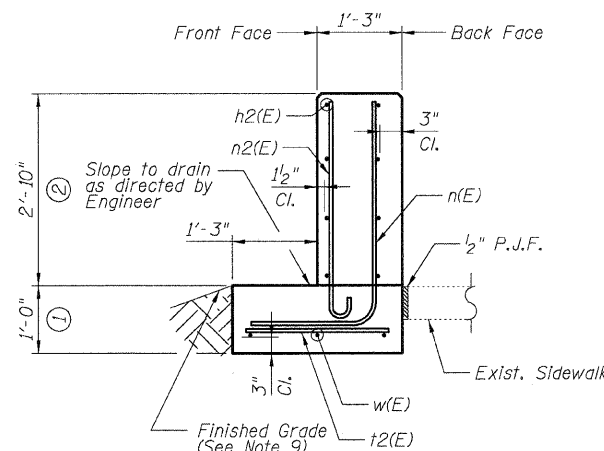
UNFOLDED FRONT FACE ELEVATION



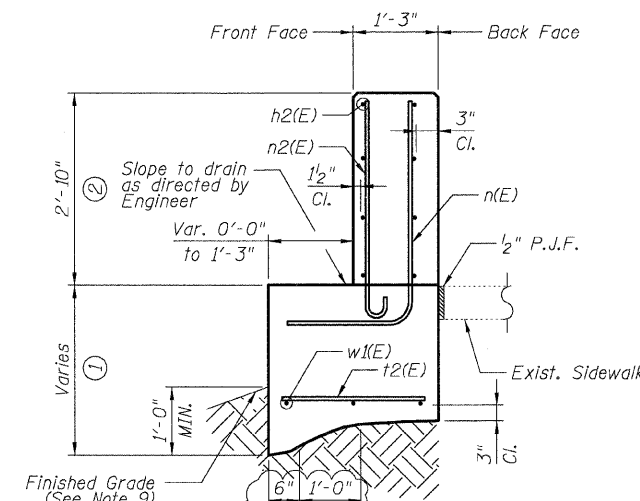
SECTION A-A



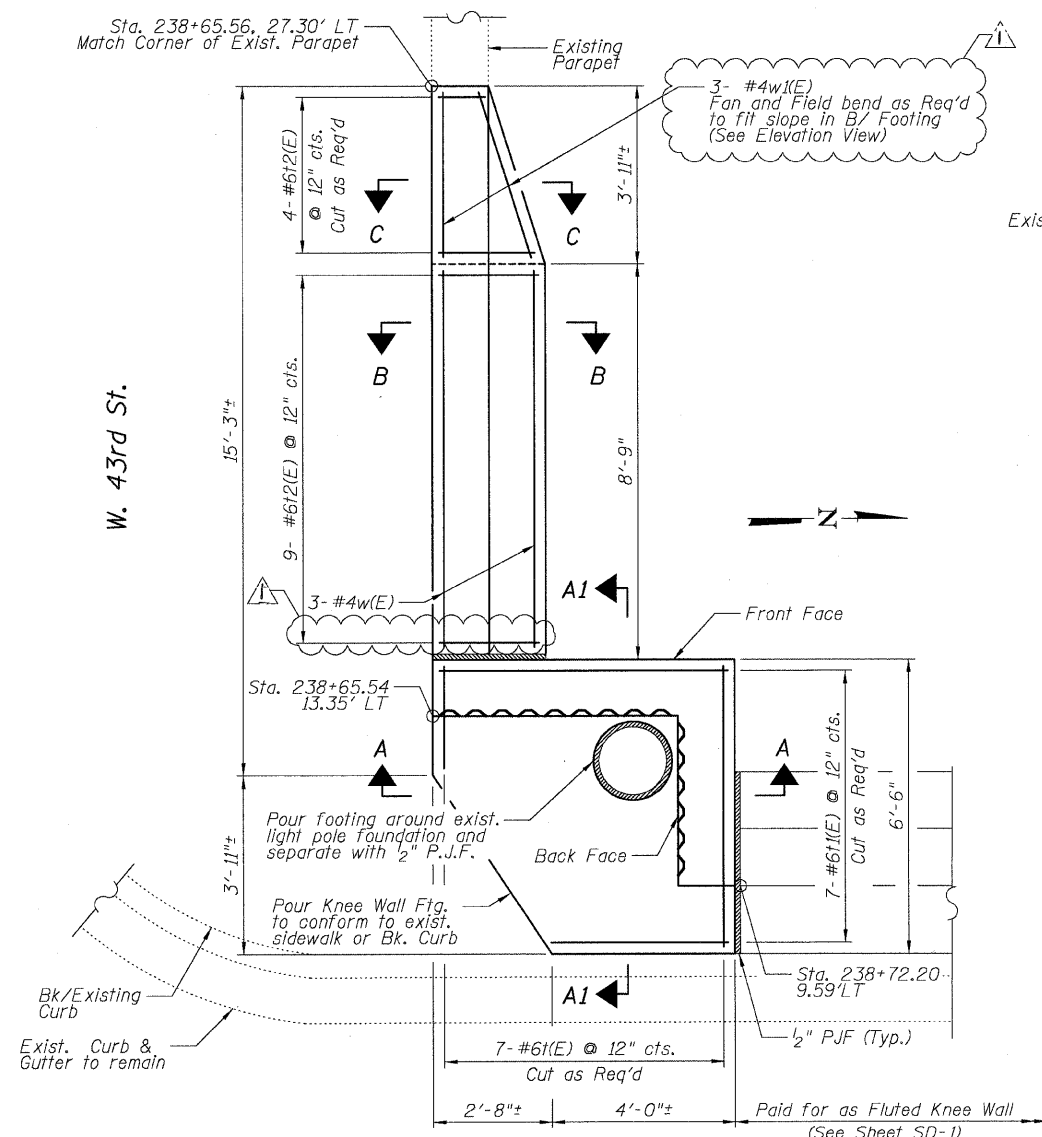
SECTION A1-A1



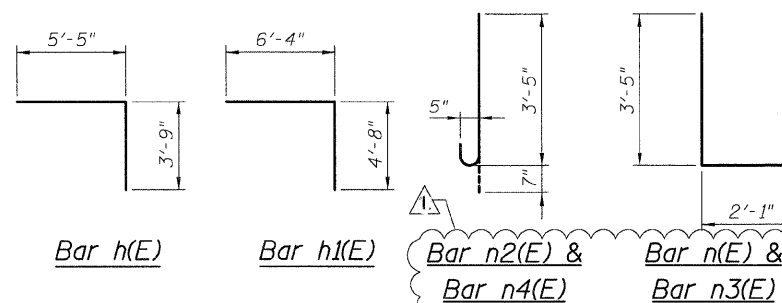
SECTION B-B



SECTION C-C



DETAIL A - PLAN



BOWMAN, BARRETT & ASSOCIATES INC.
CONSULTING ENGINEERS
Chicago, Illinois
312.228.0100
www.bbainc.com

REVISIONS	
NAME	DATE
ADDENDUM 1	7-16-08

SHEET SD-2
ILLINOIS DEPARTMENT OF TRANSPORTATION
F.A.I. 94/90 (DAN RYAN EXPRESSWAY)
NORTHBOUND KNEE WALLS (43RD ST TO ROOT ST)
DETAIL A
SCALE: NTS
DATE: 04/25/08
DRAWN BY: TL
CHECKED BY: BLU

Bar	No.	Size	Length	Shape
h(E)	8	#4	19'-7"	—
n(E)	21	#6	5'-6"	L
n(E)	21	#5	5'-10"	L
t(E)	21	#6	4'-8"	—
w(E)	4	#4	19'-7"	—
Item			Unit	Qty.
①	Concrete Structures		Cu. Yd.	3.4
②	Concrete Superstructure		Cu. Yd.	2.7
	Reinforcement Bars, Epoxy Coated		Pound	610
	Rustication Finish		Sq. Ft.	37
	Protective Coat		Sq. Yd.	14

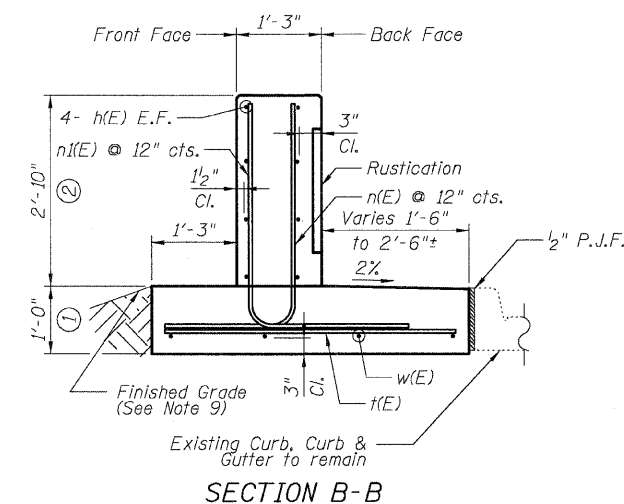
Bar	No.	Size	Length	Shape
$h(E)$	8	#4	17'-9"	—
$n(E)$	19	#6	5'-6"	L
$n(E)$	19	#5	5'-10"	L
$t(E)$	19	#6	5'-1"	—
$w(E)$	4	#4	17'-9"	—
Item			Unit	Qty.
①	Concrete Structures		Cu. Yd.	3.2
②	Concrete Superstructure		Cu. Yd.	2.4
	Reinforcement Bars, Epoxy Coated		Pound	560
	Rustication Finish		Sq. Ft.	34
	Protective Coat		Sq. Yd.	13



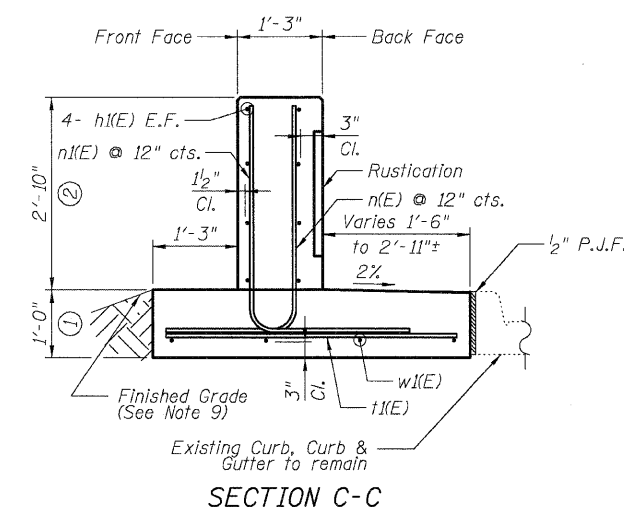
DETAIL B



DETAIL C



SECTION B-E



SECTION C-C

Diagram showing a rectangular area divided into two parts, labeled $n(E)$ and $n(F)$. The vertical dimension is $3'-5''$ and the horizontal dimension is $2'-1''$.

$$\frac{Bar\ n(E)}{\&\ n1(E)}$$

SHEET SD-3

ILLINOIS DEPARTMENT OF TRANSPORTATION
F.A.I. 94/90 (DAN RYAN EXPRESSWAY)
NORTHBOUND KNEE WALLS (43RD ST TO ROOT ST)

DETAILS B & C

SCALE: NTS
DATE: 04/25/08

DRAWN BY: TL
CHECKED BY: BL

1. All stations and offsets measured from S. La Salle St. E.
2. Back Face is face adjacent to Frontage Rd. and Front Face is face adjacent to Expressway.
3. Concrete: $f'c = 3500$ psi
4. Provide California Finish on top of foundation between stem and Frontage Road. See Roadway Details.
5. At locations where Fluted Knee Wall abuts a rigid Structure, a 2" thick Preformed Expansion Joint Filler conforming to the shape of the Structure shall be installed between the Fluted Knee Wall and the Structure.
6. Apply Protective Coat to top and back face of stem and top of Frontage Road side of foundation.
7. For Fluted Knee Wall standard details, see Sheet SD-1
8. B.F. = Back Face (Frontage Road Side)
F.F. = Front Face (Expressway Side)
E.F. = Each Face
9. Shape finished grade as required to match existing conditions.
10. P.J.F. included in cost of concrete structures.

[illegible]

BOWMAN, BARRETT & ASSOCIATES INC.
CONSULTING ENGINEERS
Chicago, Illinois
312.228.0100
www.bbainc.com