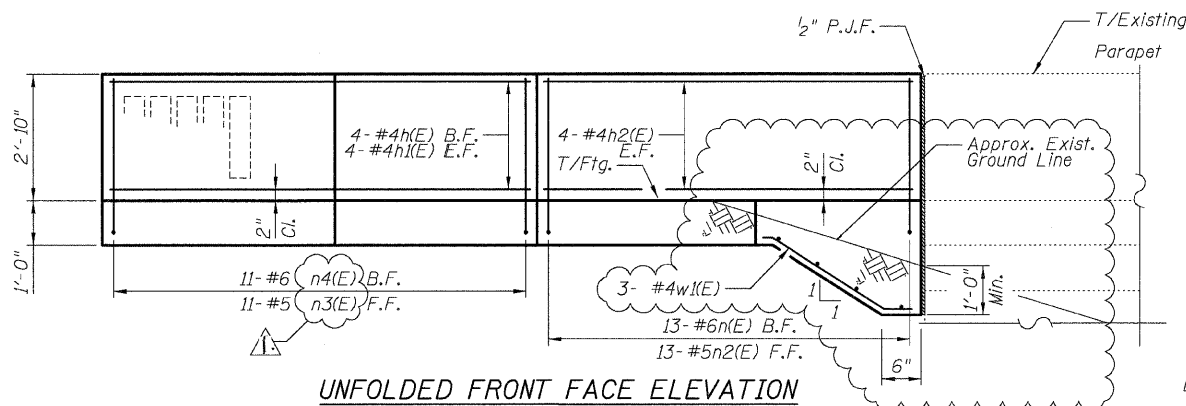


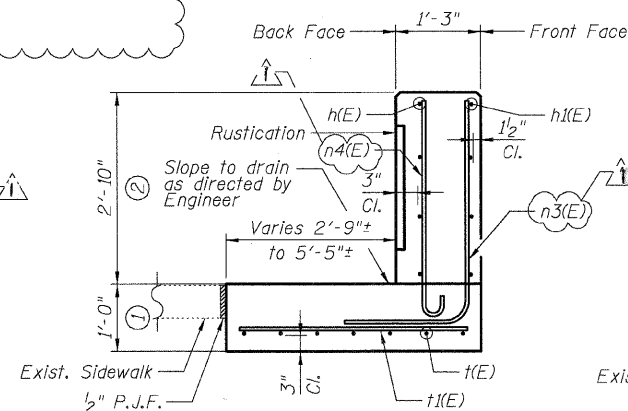
DETAIL A REINFORCEMENT
SCHEDULE AND
BILL OF MATERIAL

Bar	No.	Size	Length	Shape
h(E)	4	#4	9'-2"	
h1(E)	4	#4	11'-0"	
h2(E)	8	#4	12'-4"	
n(E)	13	#6	5'-6"	L
n2(E)	13	#5	4'-0"	
n3(E)	11	#5	5'-6"	L
n4(E)	11	#6	4'-0"	
t(E)	7	#6	6'-2"	
t1(E)	7	#6	6'-4"	
t2(E)	13	#6	2'-2"	
w(E)	3	#4	8'-4"	
w1(E)	3	#4	3'-8"	
Item				Qty.
Concrete Structures				Cu. Yd. 2.8
Concrete Superstructure				Cu. Yd. 3.1
Reinforcement Bars, Epoxy Coated				Pound 610
Rustication Finish				Sq. Ft. 17
Protective Coat				Sq. Yd. 14

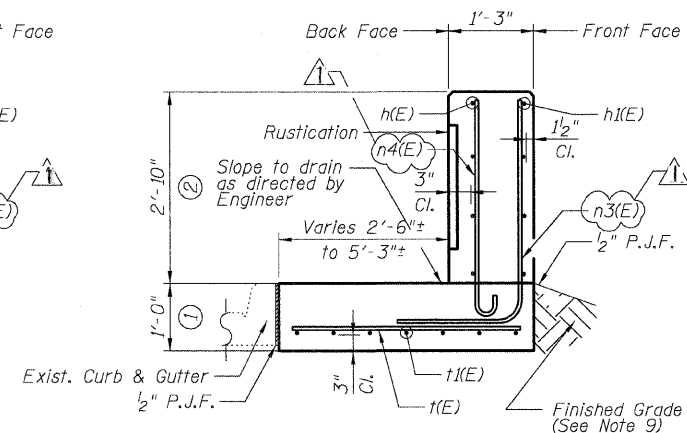
- NOTES:
- All stations and offsets measured from S. La Salle St. \square .
 - Back Face is face adjacent to Frontage Rd. and Front Face is face adjacent to Expressway.
 - Concrete: $f'c = 3500$ psi
 - Provide California Finish on top of foundation between stem and Frontage Road. See Roadway Details.
 - At locations where Fluted Knee Wall abuts a rigid structure, a 2" thick Preformed Expansion Joint Filler conforming to the shape of the structure shall be installed between the Fluted Knee Wall and the structure.
 - Apply Protective Coat to top and back face of stem and top of Frontage Road side of foundation.
 - For Fluted Knee Wall standard details, see Sheet SD-1
 - B.F. = Back Face (Frontage Road Side)
F.F. = Front Face (Expressway Side)
E.F. = Each Face
 - Shape finished grade as required to match existing conditions.
 - P.J.F. included in cost of concrete structures.



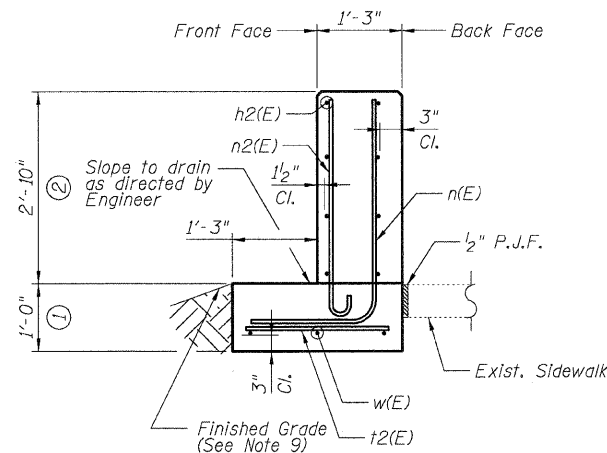
UNFOLDED FRONT FACE ELEVATION



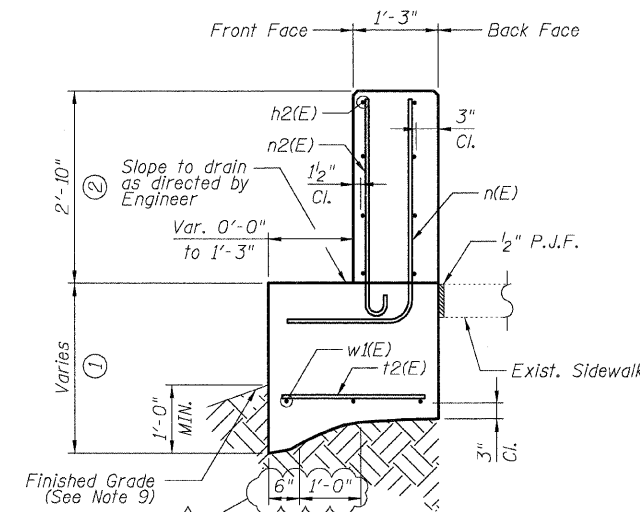
SECTION A-A



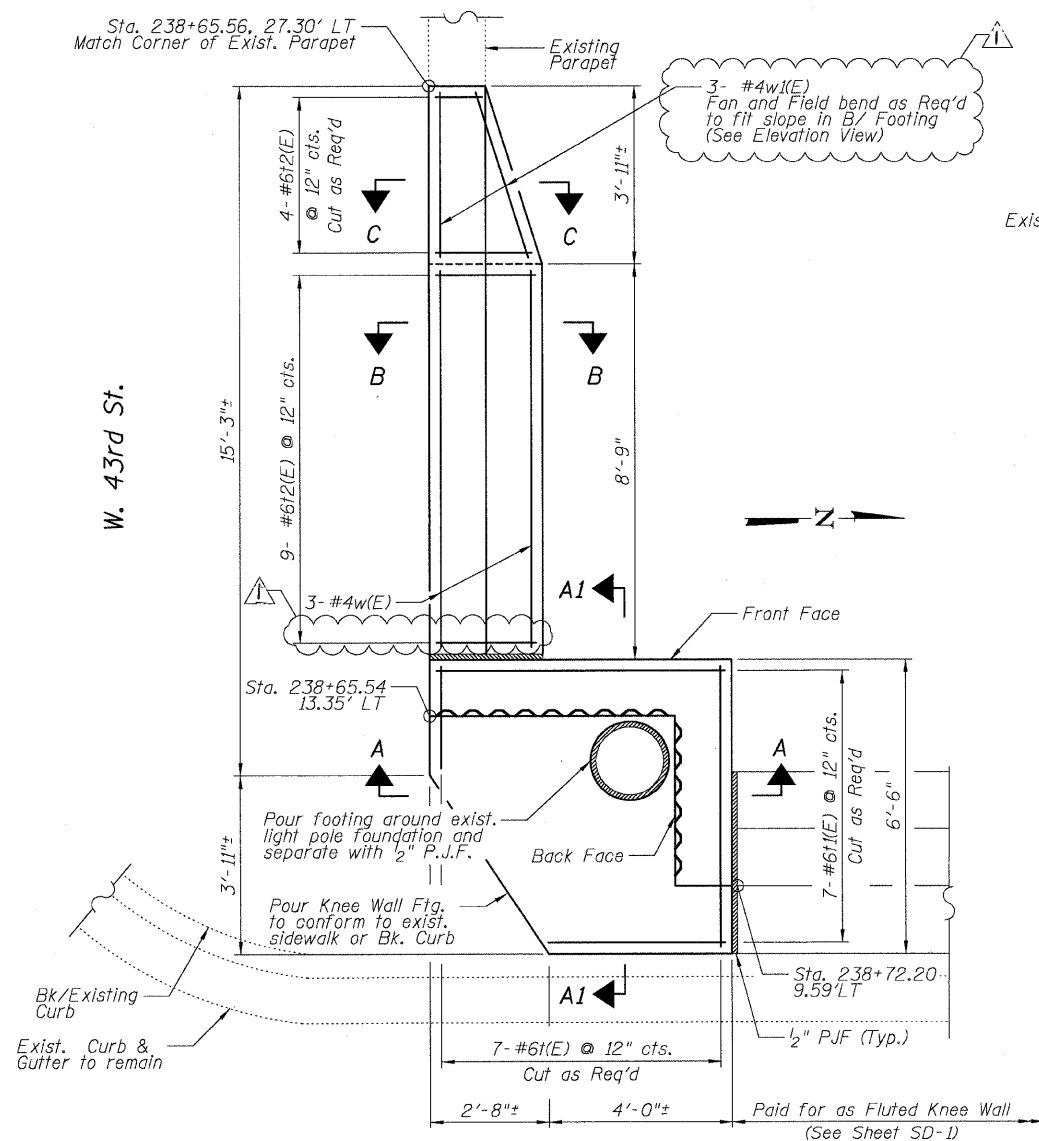
SECTION A1-A1



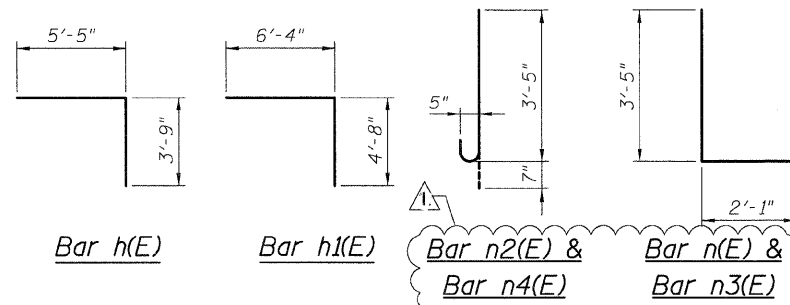
SECTION B-B



SECTION C-C



DETAIL A - PLAN



REVISIONS	
NAME	DATE
ADDENDUM 1	7-16-08