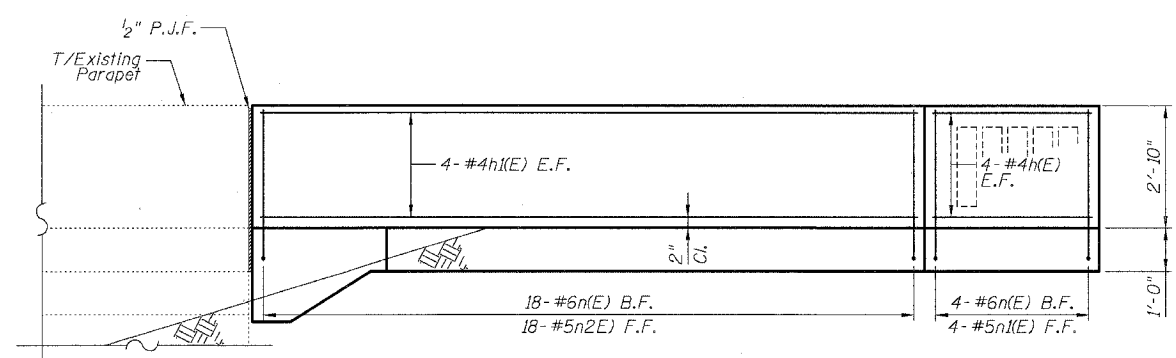


F.A.I.	SECTION	COUNTY	TOTAL SHEETS	SHEET NO.
94/90		COOK	30	16
STA.	TO STA.			
FED. ROAD DIST. NO.	ILLINOIS	FED. AID PROJECT		
62989				

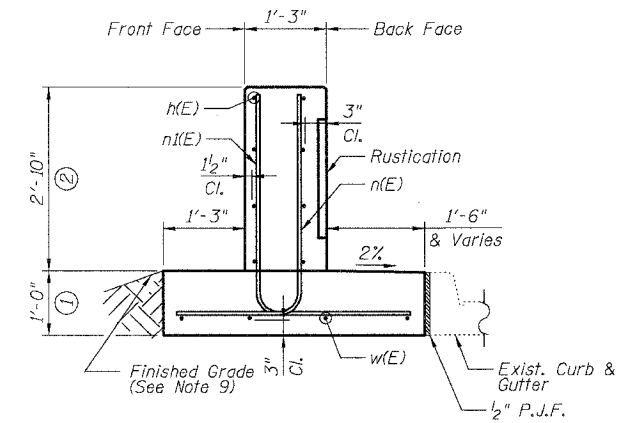
DETAIL D REINFORCEMENT SCHEDULE AND BILL OF MATERIAL

Bar	No.	Size	Length	Shape
h(E)	8	#4	4'-2"	—
h1(E)	8	#4	16'-2"	—
h2(E)	2	#4	4'-0"	—
n(E)	22	#6	5'-6"	L
n1(E)	4	#5	5'-10"	L
n2(E)	18	#5	4'-0"	—
t(E)	16	#6	2'-2"	—
w(E)	4	#4	5'-4"	—
w1(E)	3	#4	11'-2"	—
w2(E)	3	#4	3'-6"	—
Item		Unit	Qty.	
①	Concrete Structures	Cu. Yd.	2.4	
②	Concrete Superstructure	Cu. Yd.	2.3	
	Reinforcement Bars, Epoxy Coated	Pound	500	
	Rustication Finish	Sq. Ft.	13	
	Protective Coat	Sq. Yd.	11	

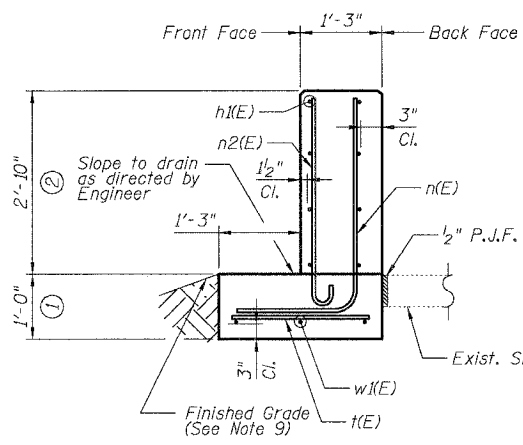
- NOTES:**
- All stations and offsets measured from S. La Salle St. @.
 - Back Face is face adjacent to Frontage Rd. and Front Face is face adjacent to Expressway.
 - Concrete: f'c = 3500 psi
 - Provide California Finish on top of foundation between stem and Frontage Road. See Roadway Details.
 - At locations where Fluted Knee Wall abuts a rigid Structure, a 1/2" thick Preformed Expansion Joint Filler conforming to the shape of the Structure shall be installed between the Fluted Knee Wall and the Structure.
 - Apply Protective Coat to top and back face of stem and top of Frontage Road side of foundation.
 - For Fluted Knee Wall standard details, see Sheet SD-1
 - B.F. = Back Face (Frontage Road Side)
F.F. = Front Face (Expressway Side)
E.F. = Each Face
 - Shape finished grade as required to match existing conditions.
 - P.J.F. included in cost of concrete structures.



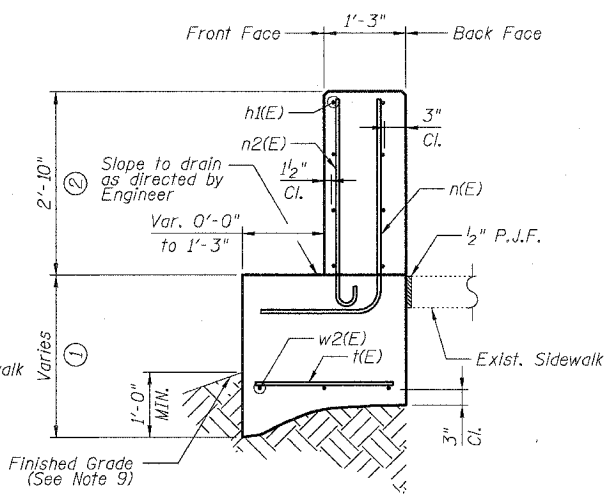
UNFOLDED FRONT FACE ELEVATION



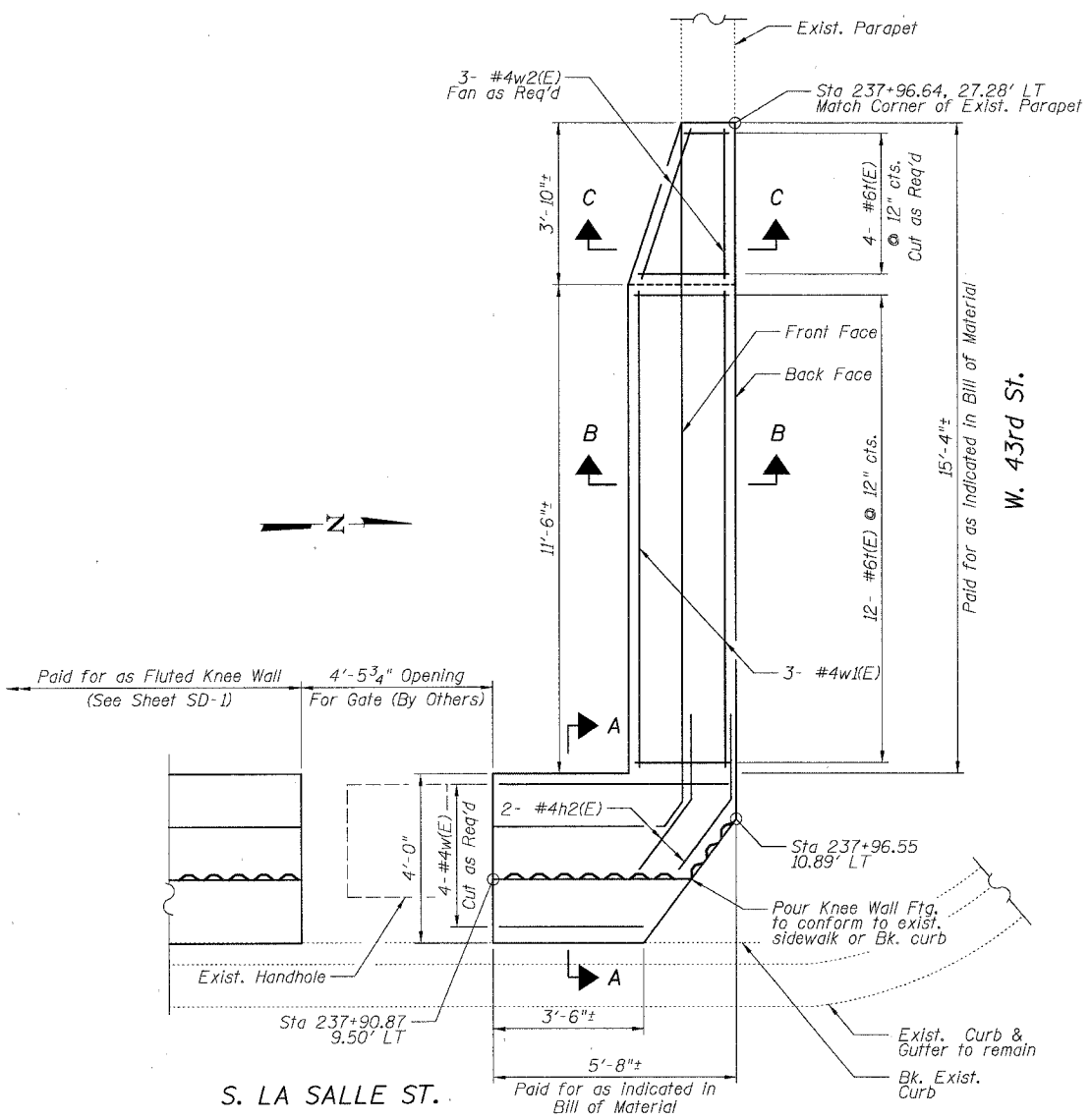
SECTION A-A



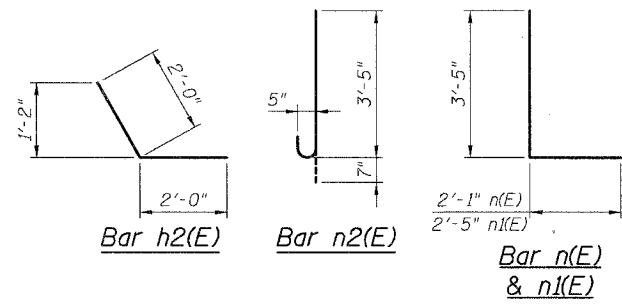
SECTION B-B



SECTION C-C



DETAIL D - PLAN



REVISIONS	
NAME	DATE

SHEET SD-3

ILLINOIS DEPARTMENT OF TRANSPORTATION
F.A.I. 94/90 (DAN RYAN EXPRESSWAY)
NORTHBOUND KNEE WALLS (45TH ST TO 43RD ST)

DETAIL D

SCALE: NTS
DATE: 04/25/08

DRAWN BY: TL
CHECKED BY: BLU

BOWMAN, BARRETT & ASSOCIATES INC.
CONSULTING ENGINEERS
Chicago, Illinois
312 228 0100
www.bbainc.com