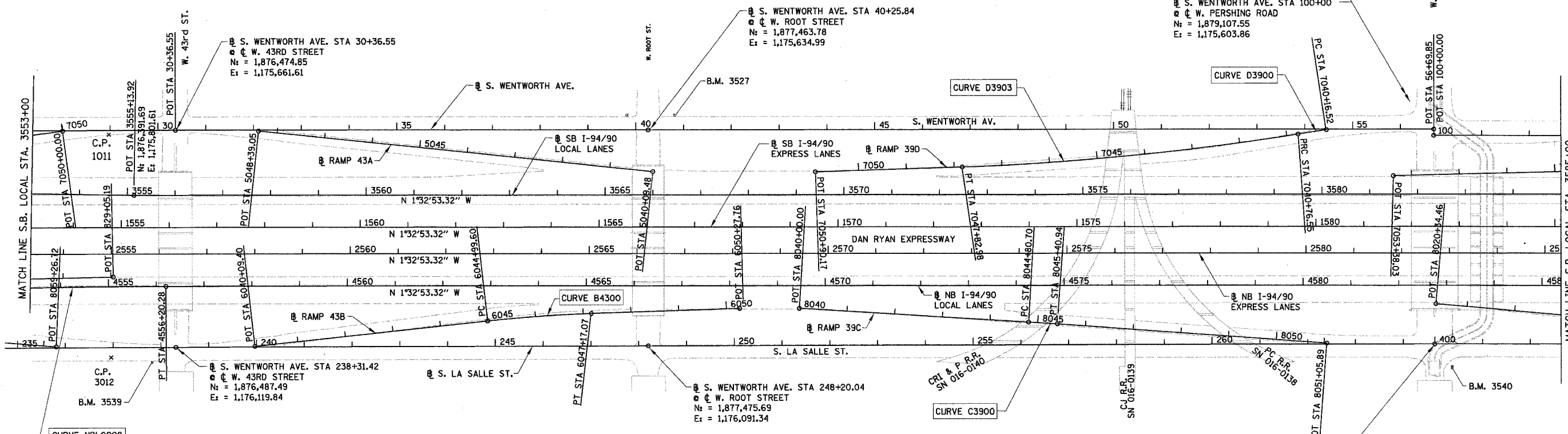
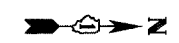


F.A.I.	SECTION	COUNTY	TOTAL SHEETS	SHEET NO.
94/90		COOK	30	6
STA.		TO STA.		
FED. ROAD DIST. NO.		ILLINOIS	FED. AID PROJECT	

62989

PROP. CURVE D3903
P.I. STA = 7044+30.25
N_t = 1,878,475.96
E_t = 1,175,675.24
Δ = 7° 22' 41" (RT)
D = 1° 02' 40"
R = 5,486.00'
T = 353.70'
L = 706.43'
E = 11.39'
P.C. STA = 7040+76.55
N_t = 1,878,823.36
E_t = 1,175,608.75
P.T. STA = 7047+82.98
N_t = 1,878,122.90
E_t = 1,175,696.57

PROP. CURVE D3900
P.I. STA = 7040+46.54
N_t = 1,878,852.84
E_t = 1,175,603.11
Δ = 0° 47' 26" (LT)
D = 1° 19' 02"
R = 4,350.00'
T = 30.02'
L = 60.03'
E = 0.10'
P.C. STA = 7040+16.52
N_t = 1,878,882.40
E_t = 1,175,597.87
P.T. STA = 7040+76.55
N_t = 1,878,823.36
E_t = 1,175,608.75



PROP. CURVE NBLOC08
P.I. STA = 4554+19.42
N_t = 1,876,262.66
E_t = 1,175,997.17
Δ = 1° 32' 04" (RT)
D = 0° 22' 55"
R = 15,000.00'
T = 200.89'
L = 401.75'
E = 1.35'
P.C. STA = 4552+18.53
N_t = 1,876,062.07
E_t = 1,176,007.97
P.T. STA = 4556+20.28
N_t = 1,876,463.47
E_t = 1,175,991.74

PROP. CURVE B4300
P.I. STA = 6046+08.39
N_t = 1,877,246.14
E_t = 1,176,032.59
Δ = 4° 21' 02" (RT)
D = 2° 00' 02"
R = 2,864.00'
T = 108.79'
L = 217.47'
E = 2.07'
e = 3.0%
S.A. = STA 6044+79.60 TO 6045+09.60
S.R. = STA 6047+07.07 TO 6047+37.07
P.C. STA = 6044+99.60
N_t = 1,877,138.36
E_t = 1,176,047.37
P.T. STA = 6047+17.07
N_t = 1,877,354.72
E_t = 1,176,026.03

PROP. CURVE C3900
P.I. STA = 8045+10.82
N_t = 1,878,300.35
E_t = 1,176,021.08
Δ = 0° 41' 25" (RT)
D = 1° 08' 45"
R = 5,000.00'
T = 30.12'
L = 60.24'
E = 0.09'
P.C. STA = 8044+80.70
N_t = 1,878,270.25
E_t = 1,176,020.07
P.T. STA = 8045+40.94
N_t = 1,878,330.44
E_t = 1,176,022.46

S. WENTWORTH AVE. STA 56+69.85
W. PERSHING ROAD
N_t = 1,879,107.55
E_t = 1,175,590.76

S. WENTWORTH AVE. STA 100+00
W. PERSHING ROAD
N_t = 1,879,107.55
E_t = 1,175,603.86

S. LASALLE ST. STA 400+00.00 AH
STA 264+66.03 BK
W. PERSHING ROAD
N_t = 1,879,121.00
E_t = 1,176,043.89

- NOTES:**
- AVERAGE GRID TO GROUND CONVERSION
FACTOR = 1.000010988654360
 - FOR BENCH MARK INFORMATION, SEE SHEET ALT-16 OF ALIGNMENT PLAN SHEETS.
 - FOR RAMP P.O.T. INFORMATION, SEE SHEET ALT-16 OF ALIGNMENT PLAN SHEETS.

REVISIONS	
NAME	DATE

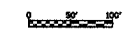
ILLINOIS DEPARTMENT OF TRANSPORTATION
F.A.I. 94/90 (DAN RYAN EXPRESSWAY)
NORTHBOUND KNEE WALLS (45TH ST TO 43RD ST)

ALIGNMENT PLAN

SCALE: 1"=100'
DATE: 04/25/08

DRAWN BY: JDC
CHECKED BY: RS

BOWMAN, BARRETT & ASSOCIATES INC
CONSULTING ENGINEERS
Chicago, Illinois
312.228.9100
www.bbandainc.com



ALT-02
5/6/2008 PW
4/24/2008