

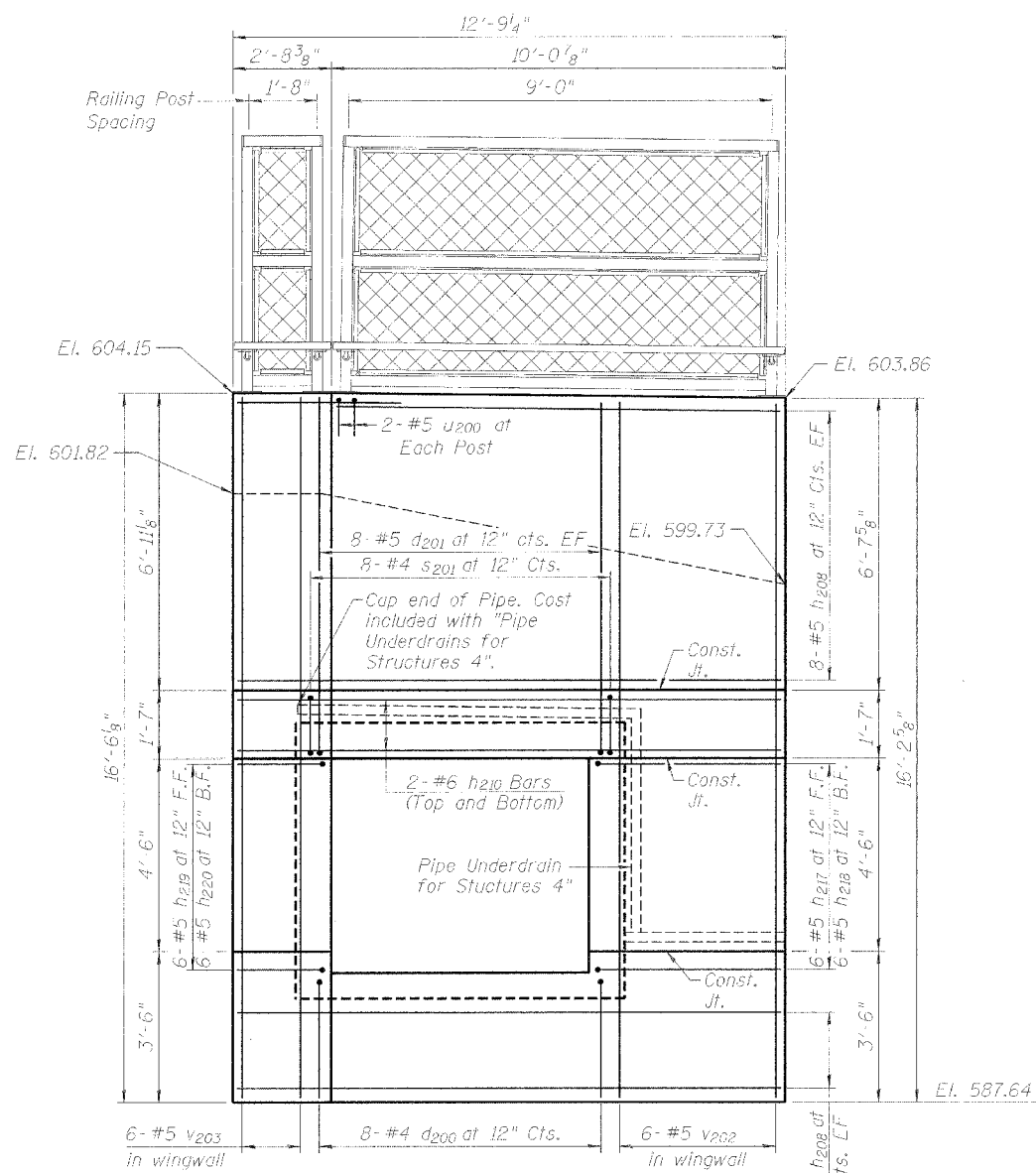
STATE OF ILLINOIS  
DEPARTMENT OF TRANSPORTATION

ROUTE NO.	SECTION	COUNTY	JOB NO.	SHEET NO.
F.A.P. 338	114R-1	WILL	355	7
FED. ROAD DIST. NO.		ILLINOIS	FED. AID PROJECT	

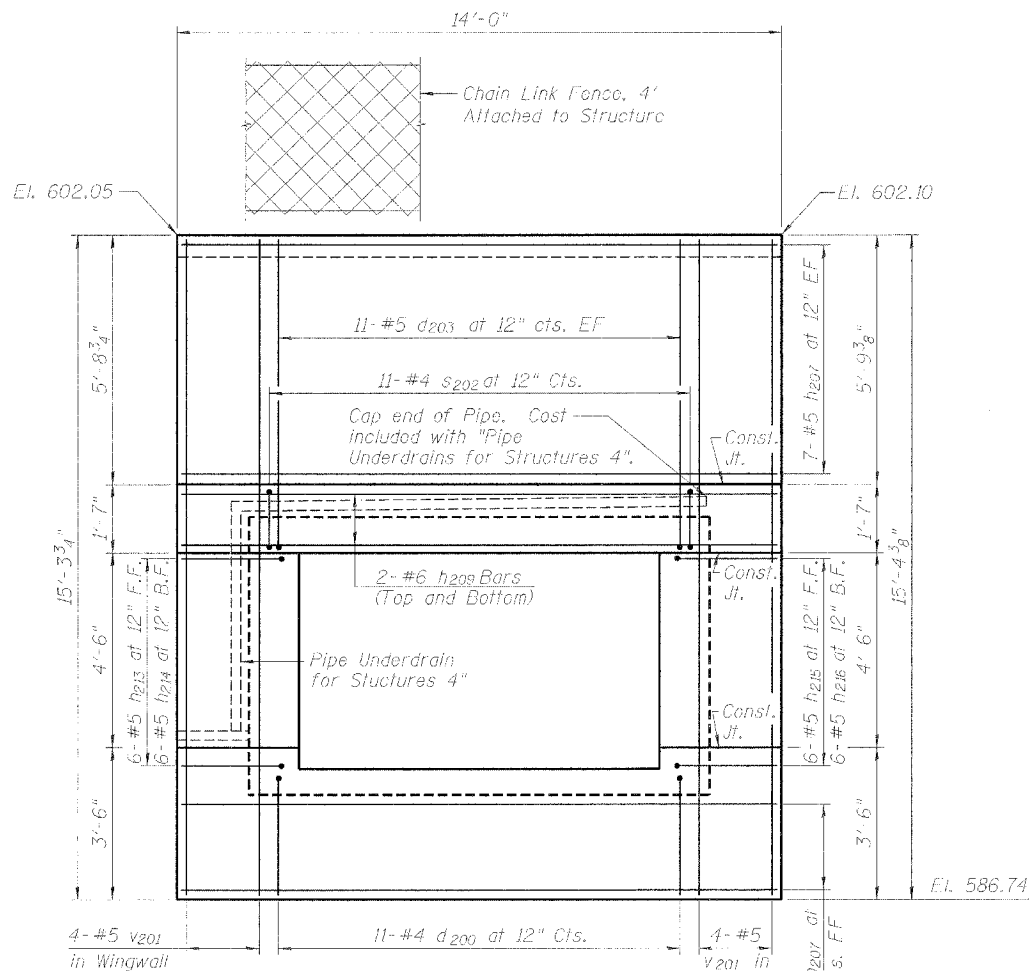
Contract # 62416

**BILL OF MATERIAL**

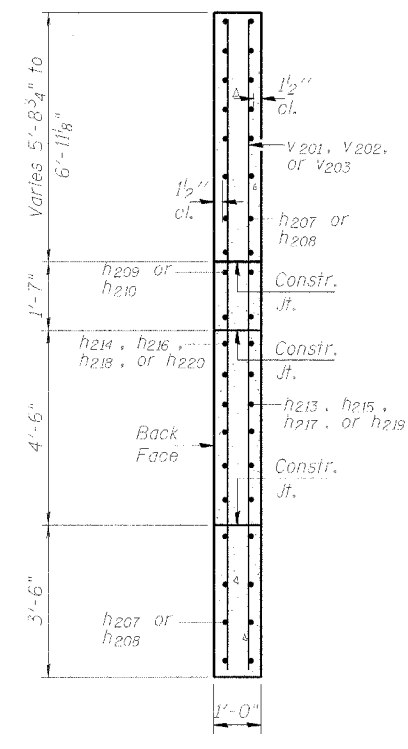
Bar	No.	Size	Length	Shape
a201	492	#5	7'-10"	C
a202	59	#4	6'-3"	—
d200	19	#4	4'-5"	L
d201	16	#5	8'-10"	L
d202	22	#5	5'-0"	L
d203	22	#5	7'-10"	L
h200	41	#5	31'-8"	—
h201	24	#1	25'-0"	—
h202	12	#5	24'-11"	—
h203	6	#4	21'-11"	—
h204	5	#5	30'-4"	—
h205	58	#5	33'-2"	—
h206	24	#4	33'-0"	—
h207	20	#5	13'-8"	—
h208	22	#5	12'-0"	—
h209	4	#6	13'-8"	—
h210	4	#6	12'-0"	—
h211	4	#6	9'-5"	—
h212	16	#5	9'-5"	—
h213	6	#5	6'-11"	—
h214	6	#5	5'-3"	—
h215	6	#5	7'-3"	—
h216	6	#5	5'-7"	—
h217	6	#5	8'-7"	—
h218	6	#5	6'-5"	—
h219	6	#5	7'-4"	—
h220	6	#5	5'-8"	—
h221	30	#5	6'-1"	—
h222	6	#5	7'-4"	—
h223	8	#5	5'-0"	—
h224	6	#5	10'-1"	—
s201	8	#4	4'-9"	D
s202	22	#1	4'-11"	D
u200	8	#5	5'-0"	U
v200	339	#4	5'-9"	—
v201	8	#5	15'-0"	—
v202	6	#5	15'-10"	—
v203	6	#5	16'-1"	—
Concrete Box Culverts			Cu. Yd.	74.0
Reinforcement Bars			Found	12,990



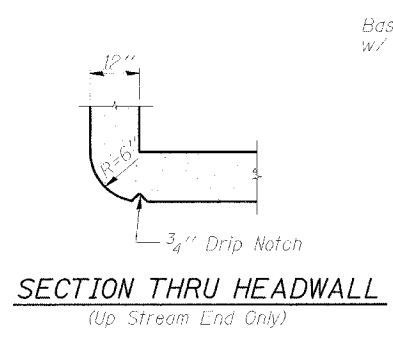
**WEST END VIEW**  
(Looking Southeast)



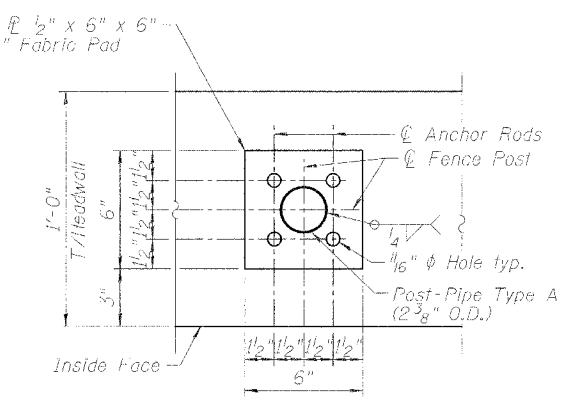
**EAST END VIEW**  
(Looking West)



**SECTION A-A**

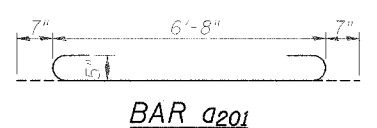


**SECTION THRU HEADWALL**  
(Up Stream End Only)

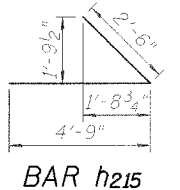


**BASE PLATE DETAIL**

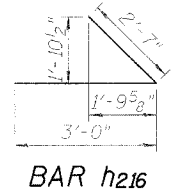
Drill and Grout 5/8" diameter Anchor Rods according to Article 509.06 of the Standard Specifications. Embedment shall be according to the manufacturer's specifications. Cost included with "Chain Link Fence, 4' Attached to Structure". For additional "Chain Link Fence Details see Std. 664001.



**BAR a201**



**BAR h215**



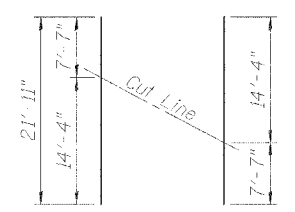
**BAR h216**

**BARS d200 THRU d203 and h217, h218 and h221**

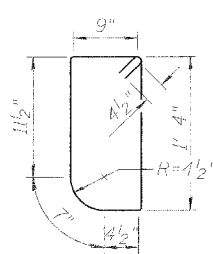
Bar	A	B
d200	1'-9"	2'-8"
d201	10"	8'-0"
d202	10"	4'-2"
d203	10"	7'-0"
h217	3'-2"	5'-5"
h218	3'-5"	3'-0"
h221	10"	5'-6"

**BARS h208, h210, h213, h214, h219 and h220**

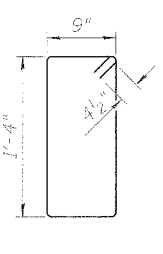
Bar	A	B	C	D
h208	9'-10"	1'-7"	1'-6"	2'-2"
h210	9'-10"	1'-7"	1'-6"	2'-2"
h213	6'-0"	7 3/4"	8"	11"
h214	3'-0"	1'-7"	1'-7 1/2"	2'-3"
h219	6'-0"	11"	11 1/2"	1'-4"
h220	3'-0"	1'-10 1/4"	1'-11"	2'-8"



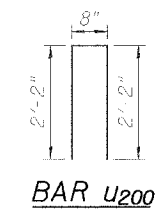
**BAR h203**



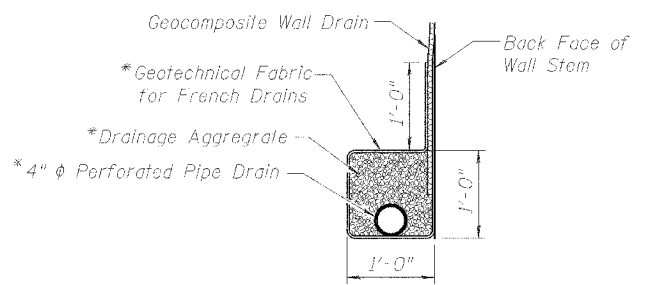
**BAR s201**



**BAR s202**



**BAR u200**



**PIPE UNDERDRAIN DETAIL**

\*Included in the cost of "Pipe Underdrains for Structures"

**CULVERT SECTIONS AND DETAILS**

IL ROUTE 59 OVER DRAINAGE DITCH  
F.A.P. ROUTE 338 SECTION 114R-1  
WILL COUNTY  
STATION 3051+32.33



1051 PERIMETER DRIVE, SUITE 1025  
SCHAMBERG, IL 60173-5058  
TEL (847) 620-3900  
FAX (847) 620-9630

© 2008 TranSystems, Inc. All rights reserved. 11/10/08