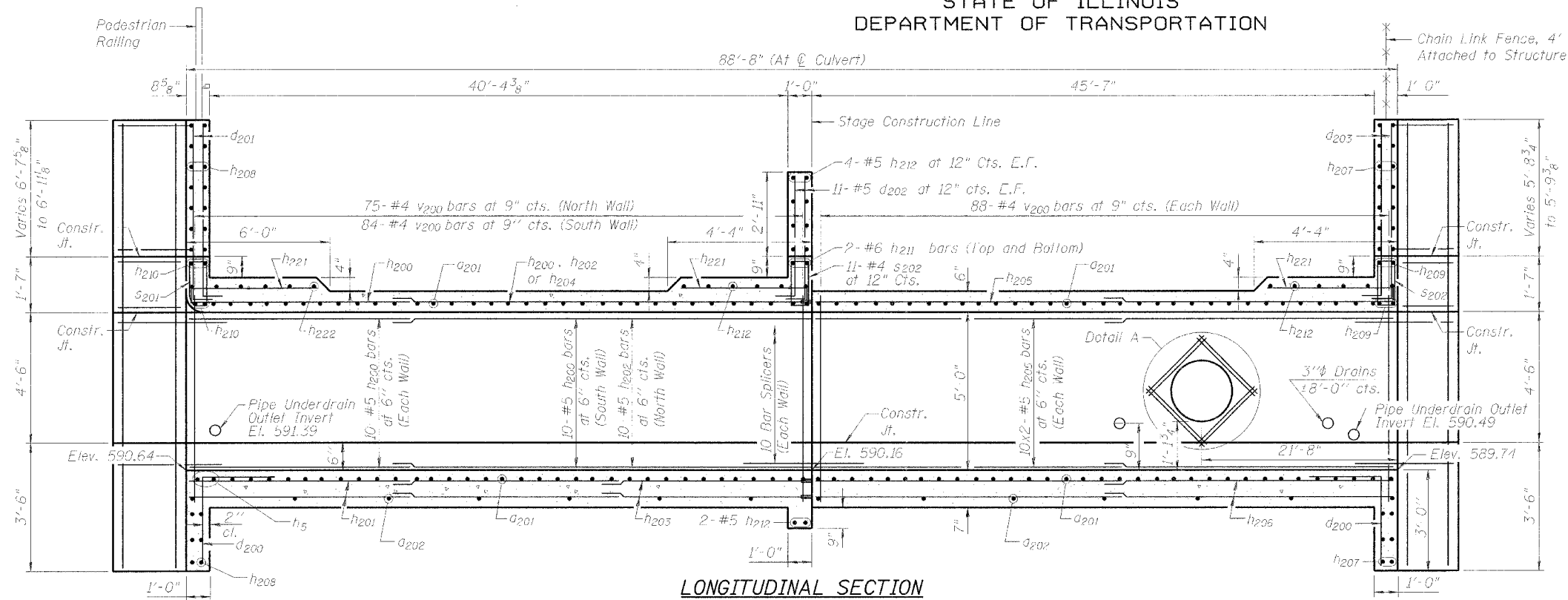


STATE OF ILLINOIS
DEPARTMENT OF TRANSPORTATION

ROUTE NO.	SECTION	COUNTY	TOTAL SHEETS	SHEET NO.
F.A.P. 338	114R-1	WILL	355	277
FED. ROAD DIST. NO. 7		ILLINOIS	FED. AID PROJECT	

SHEET NO. 53-3
7 SHEETS

Contract # 62416

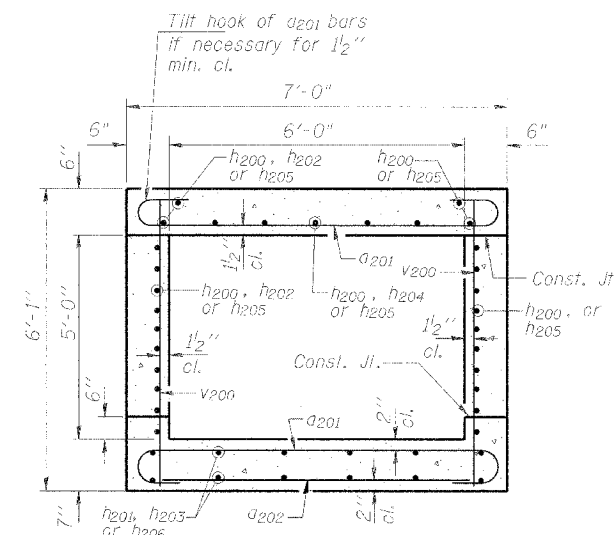


STAGE I REINFORCEMENT

LONGITUDINAL SECTION

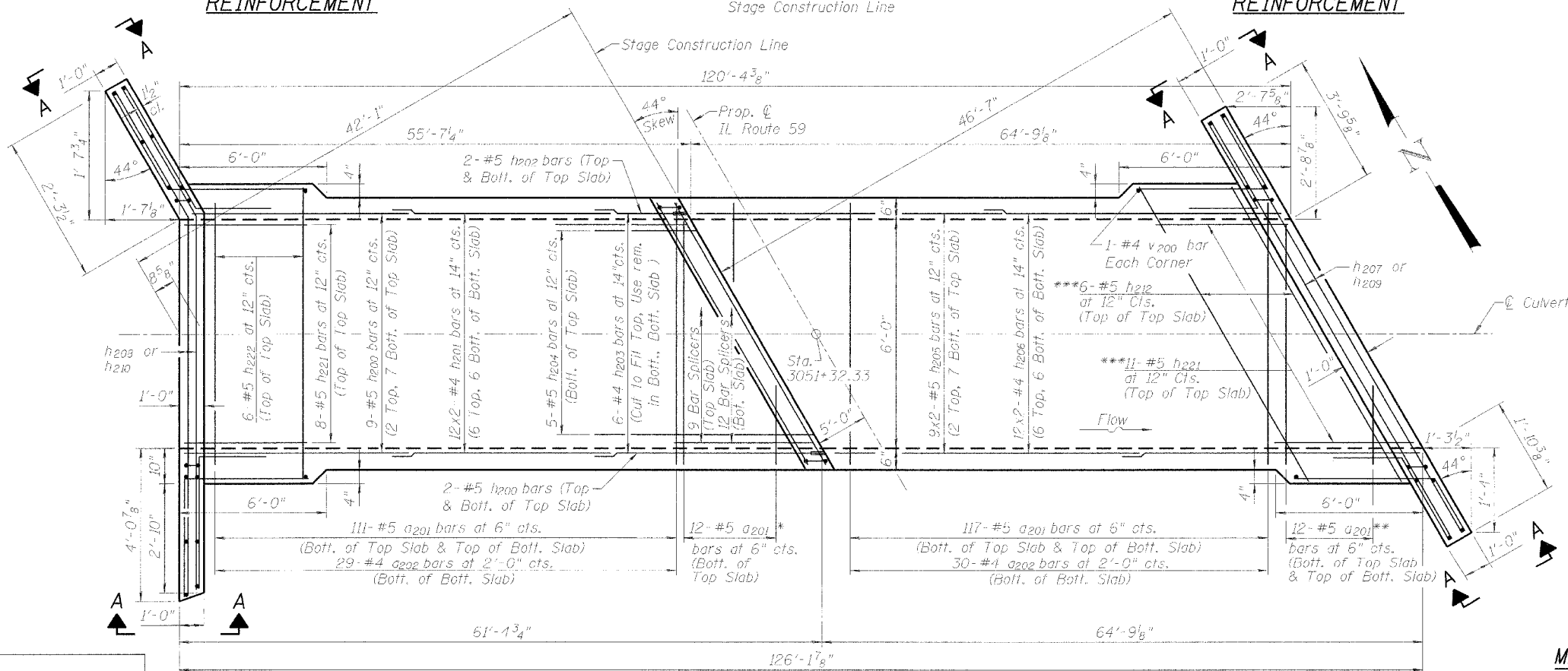
(Looking North)
Dimensions of Rt. L's to Stage Construction Line

STAGE II REINFORCEMENT



SECTION THRU BARREL

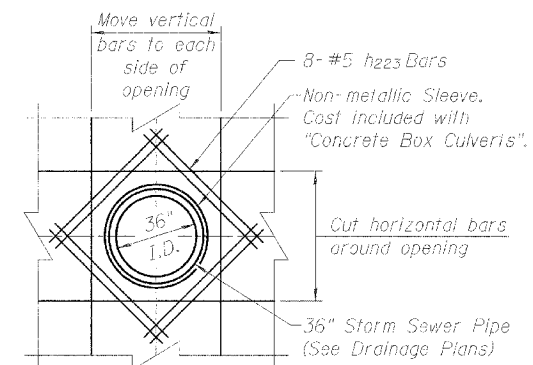
(Looking East)



STAGE I REINFORCEMENT

PLAN

STAGE II REINFORCEMENT



DETAIL A

(North Sidewall Only)

- Notes:
1. Bars indicated thus 12 x 4-#5 etc. indicates 12 lines of bars with 4 lengths per line.
 2. For Section A-A, see Sheet S3-4.

MINIMUM BAR LAP

- (Barrel)
- #4 bar = 1'-4"
 - #5 bar = 1'-8"
 - #6 bar = 2'-0"
 - #7 bar = 2'-9"
 - #8 bar = 3'-8"

CULVERT PLAN AND ELEVATION

IL ROUTE 59 OVER DRAINAGE DITCH
F.A.P. ROUTE 338 SECTION 114R-1
WILL COUNTY
STATION 3051+32.33



1051 PERIMETER DRIVE, SUITE 1025
SCHILLING, IL 60073-5036
TEL (847) 605-9600
FAX (847) 605-9610