

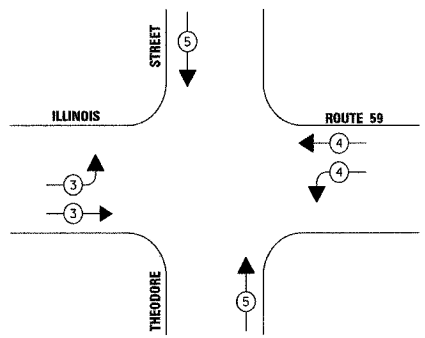
F.A.P. R.T.E.	SECTION	COUNTY	TOTAL SHEETS	SHEET NO.
338	114R-1	WILL	355	241
STA.	TO STA.			
FED. ROAD DIST. NO. 1	ILLINOIS	FED. AID PROJECT		

SCHEDULE OF QUANTITIES

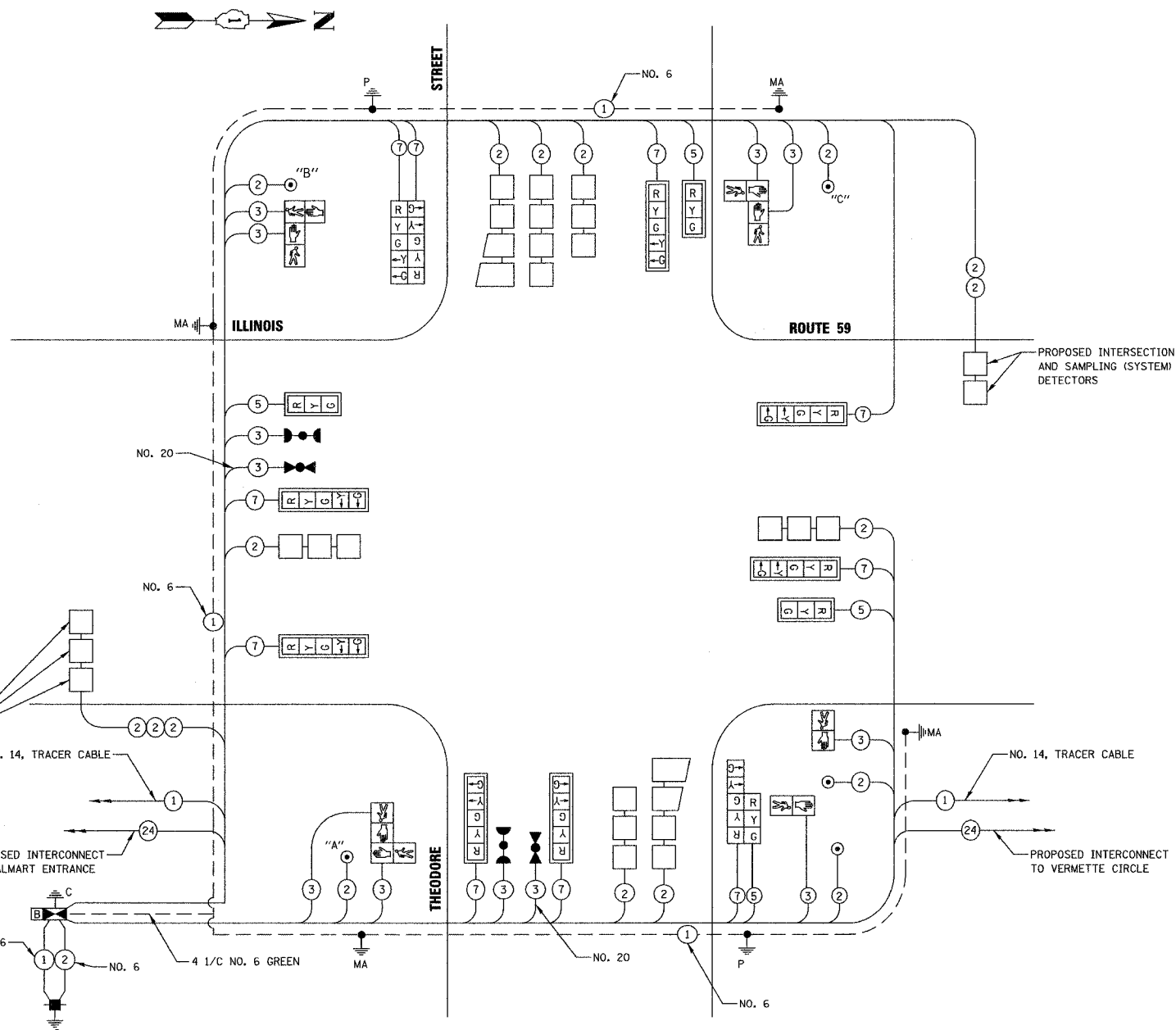
ITEM	UNIT	QUANTITY
SIGN PANEL - TYPE 1	SQ FT	32
CONDUIT IN TRENCH, 2" DIA., GALVANIZED STEEL	FOOT	512
CONDUIT IN TRENCH, 2 1/2" DIA., GALVANIZED STEEL	FOOT	57
CONDUIT IN TRENCH, 4" DIA., GALVANIZED STEEL	FOOT	54
CONDUIT PUSHED, 2" DIA., GALVANIZED STEEL	FOOT	124
CONDUIT PUSHED, 2 1/2" DIA., GALVANIZED STEEL	FOOT	9
CONDUIT PUSHED, 4" DIA., GALVANIZED STEEL	FOOT	425
HANDHOLE	EACH	4
HEAVY-DUTY HANDHOLE	EACH	4
DOUBLE HANDHOLE	EACH	2
TRENCH AND BACKFILL FOR ELECTRICAL WORK	FOOT	623
FULL-ACTUATED CONTROLLER AND TYPE IV CABINET, SPECIAL TRANSCIEVER - FIBER OPTIC	EACH	1
ELECTRIC CABLE IN TRENCH, SIGNAL, NO. 14 2C	FOOT	855
ELECTRIC CABLE IN CONDUIT, SIGNAL NO. 14 3C	FOOT	1,700
ELECTRIC CABLE IN CONDUIT, SIGNAL NO. 14 5C	FOOT	975
ELECTRIC CABLE IN CONDUIT, SIGNAL NO. 14 7C	FOOT	1,958
ELECTRIC CABLE IN CONDUIT, LEAD-IN, NO. 14 1 PAIR	FOOT	2,870
ELECTRIC CABLE IN CONDUIT, SERVICE, NO. 6 2 C	FOOT	35
TRAFFIC SIGNAL POST, GALVANIZED STEEL 16 FT.	EACH	2
STEEL MAST ARM ASSEMBLY AND POLE, 30 FT.	EACH	2
STEEL MAST ARM ASSEMBLY AND POLE WITH DUAL MAST ARMS, 50 FT. AND 30 FT.	EACH	1
CONCRETE FOUNDATION, TYPE A	FOOT	8
CONCRETE FOUNDATION, TYPE C	FOOT	4
CONCRETE FOUNDATION, TYPE E 30-INCH DIAMETER	FOOT	27
CONCRETE FOUNDATION, TYPE E 36-INCH DIAMETER	FOOT	30
SIGNAL HEAD, LED, 1-FACE, 3-SECTION, MAST-ARM MOUNTED	EACH	3
SIGNAL HEAD, LED, 1-FACE, 5-SECTION, MAST-ARM MOUNTED	EACH	7
SIGNAL HEAD, LED, 2-FACE, 5-SECTION, BRACKET MOUNTED	EACH	1
SIGNAL HEAD, LED, 2-FACE, 1-3 SECTION, 1-5 SECTION, BRACKET MOUNTED	EACH	1
PEDESTRIAN SIGNAL HEAD, LED, 1-FACE, BRACKET MOUNTED	EACH	2
PEDESTRIAN SIGNAL HEAD, LED, 2-FACE, BRACKET MOUNTED	EACH	3
TRAFFIC SIGNAL BACKPLATE, LOUVERED, ALUMINUM	EACH	10
INDUCTIVE LOOP DETECTOR	EACH	12
* LIGHT DETECTOR	EACH	2
* LIGHT DETECTOR AMPLIFIER	EACH	1
PEDESTRIAN PUSH-BUTTON	EACH	5
REMOVE TEMPORARY TRAFFIC SIGNAL INSTALLATION	EACH	1
MAINTENANCE OF EXISTING TEMPORARY TRAFFIC SIGNAL INSTALLATION	EACH	1
PERFORMED DETECTOR LOOP	FOOT	949
TEMPORARY TRAFFIC SIGNAL TIMING	EACH	1
SERVICE INSTALLATION - POLE MOUNTED	EACH	1
ELECTRIC CABLE IN CONDUIT, GROUNDING, NO. 6 1C	FOOT	749
* ELECTRIC CABLE IN CONDUIT NO. 20 3/C, TWISTED, SHIELDED	FOOT	315
UNINTERRUPTIBLE POWER SUPPLY	EACH	1
STEEL MAST ARM ASSEMBLY AND POLE WITH DUAL MAST ARMS, 30 FT. AND 54 FT.	EACH	1

* 100% OF THE COST FOR EMERGENCY VEHICLE PREEMPTION ITEMS WILL BE PAID FOR BY CITY OF JOLIET.

EMERGENCY VEHICLE PREEMPTION SEQUENCE



EMERGENCY VEHICLE PREEMPTOR	3	4	5
MOVEMENT	→	←	↑

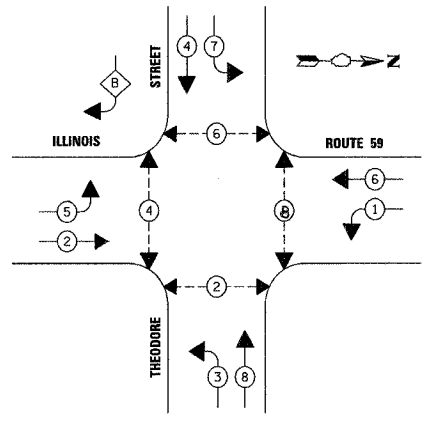


CABLE PLAN LEGEND

- EXISTING PROPOSED
- 8" (200mm) TRAFFIC SIGNAL SECTION
 - 12" (300mm) TRAFFIC SIGNAL SECTION
 - 12" (300mm) PEDESTRIAN SIGNAL SECTION
 - 12" (300mm) PEDESTRIAN SIGNAL SECTION
 - CONTROLLER CABINET
 - SERVICE INSTALLATION
 - TELEPHONE CONNECTION
 - VEHICLE DETECTOR, INDUCTION LOOP
 - MAGNETIC DETECTOR
 - EMERGENCY VEHICLE LIGHT DETECTOR
 - CONFIRMATION BEACON
 - PUSHBUTTON DETECTOR
 - DENOTES NUMBER OF CONDUCTORS
ALL CABLE NO. 14 EXCEPT AS INDICATED
ALL LOOP DETECTOR CABLE TO BE SHIELDED
 - FIBER OPTIC CABLE IN CONDUIT
NO. 62.5/125 2-MM12F & SM12F
 - RAILROAD CONTROL CABINET
 - ILLUMINATED SIGN
"NO LEFT TURN"
 - ILLUMINATED SIGN
"NO RIGHT TURN"
 - SIGNAL FACE WITH BACKPLATE
"P" INDICATES PROGRAMMED HEAD
 - GROUND ROD AT HANDHOLE (H),
DOUBLE HANDHOLE (H), OR CONTROLLER (C)
 - GROUND ROD AT POST (P)
OR MAST ARM POLE (MA)
 - GROUND ROD AT ELECTRIC
SERVICE INSTALLATION
 - UNINTERRUPTIBLE POWER SUPPLY (UPS)

CABLE PLAN

PROPOSED CONTROLLER SEQUENCE



- LEGEND**
- DUAL ENTRY PHASE
 - OVERLAP
 - PEDESTRIAN PHASE
 - NUMBER REFERS TO ASSOCIATED PHASE

PUSHBUTTON "A" SHALL PLACE A CALL TO PHASE 2 AND 4.
PUSHBUTTON "B" SHALL PLACE A CALL TO PHASE 4 AND 6.
PUSHBUTTON "C" SHALL PLACE A CALL TO PHASE 6 AND 8.

NOTE: ALL LOOP DETECTION SHOWN ON THIS PLAN WILL BE "PERFORMED" DETECTION LOOPS.

THE TRAFFIC SIGNAL CONTROL EQUIPMENT FOR THIS SIGNAL SHALL BE "ECONOLITE" TO MATCH THE EXISTING ADJACENT SYSTEM.

I.D.O.T. TRAFFIC SIGNAL INSTALLATION ELECTRICAL SERVICE REQUIREMENTS					TOTAL WATTAGE
TYPE	NO. LAMPS	WATTAGE INCAND.	LED % OPERATION		
SIGNAL (RED)	14	135	17	0.50	119
(YELLOW)	14	135	25	0.25	87.5
(GREEN)	14	135	15	0.25	52.5
ARROW	20	135	12	0.10	24
PED. SIGNAL	8	90	25	1.00	200
CONTROLLER	1	100	100	1.00	100
ILLUM. SIGN		84	64	0.05	
FLASHER				0.50	
ENERGY COSTS TO:		TOTAL =			583

ILLINOIS DEPARTMENT OF TRANSPORTATION
DIVISION OF HIGHWAY/DISTRICT 1
201 WEST CENTER COURT/SCHAUMBURG, ILLINOIS 60196-1096
ENERGY SUPPLY CONTACT: JUDY MILLER
PHONE: 815-724-5717
COMPANY: COMMONWEALTH EDISON

FOUNDATION (DEPTH)	FT. (m)	CABLE SLACK	FT. (m)	VERTICAL	FT. (m)
TYPE A - POST	4 (1.2)	HANDHOLE	6.5 (2.0)	ALL FOUNDATIONS	3.5 (1.0)
C & D - CONTROLLER	4 (1.2)	DOUBLE HANDHOLE	13 (4.0)	MAST ARM (L) POLE	20'+L-2=
E - M. ARM POLE		SIGNAL POST	2 (1.0)	(6m+L-0.6m)=	
30" (750mm)	13.5 (4.1)	CONTROLLER CAB.	1 (0.5)	BRACKET MOUNTED	13 (4.0)
36" (900mm)	15 (4.6)	FIBER OPTIC	13 (4.0)	PED. PUSHBUTTON	4 (1.2)
		ELECTRIC SERVICE	1 (0.5)	ELECTRIC SERVICE	13.5 (4.1)
		GROUND CABLE	1 (0.5)	SERVICE TO GROUND	13.5 (4.1)
				POST MOUNTED	6 (1.8)

REVISIONS	
NAME	DATE
REVISED IL59 ALIGN.	12/22/08

ILLINOIS DEPARTMENT OF TRANSPORTATION
**CABLE PLAN,
PHASE DESIGNATION DIAGRAM,
AND SCHEDULE OF QUANTITIES**
ILLINOIS ROUTE 59 AT THEODORE STREET
SCALE: NONE
DATE 3/18/08
DRAWN BY BAR
DESIGNED BY FA
CHECKED BY KMM