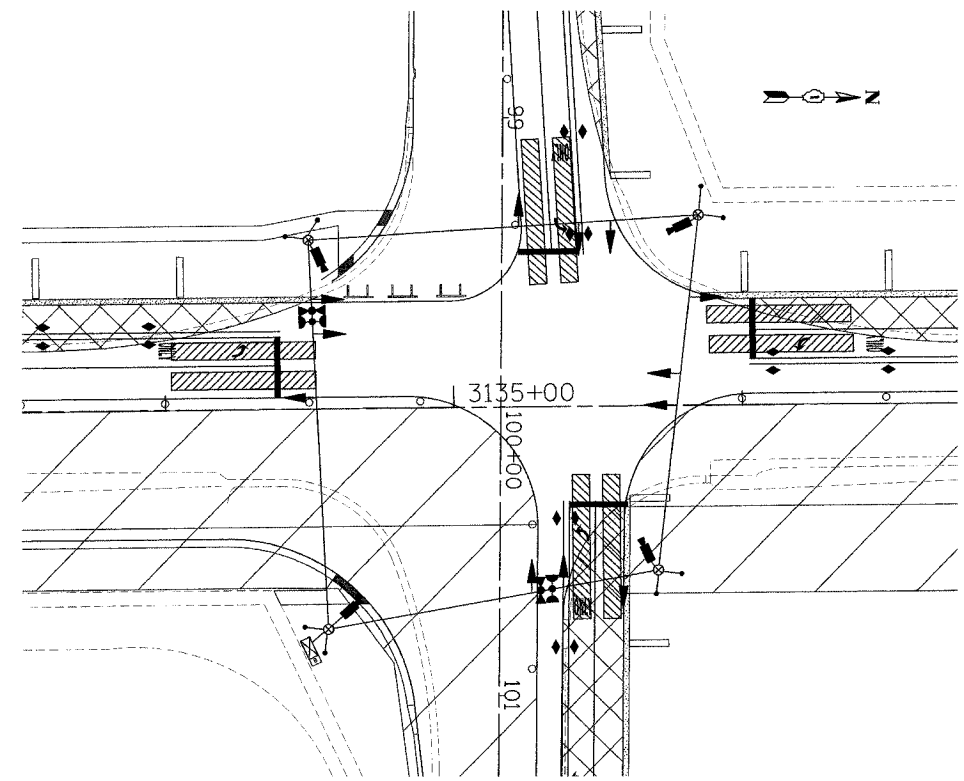


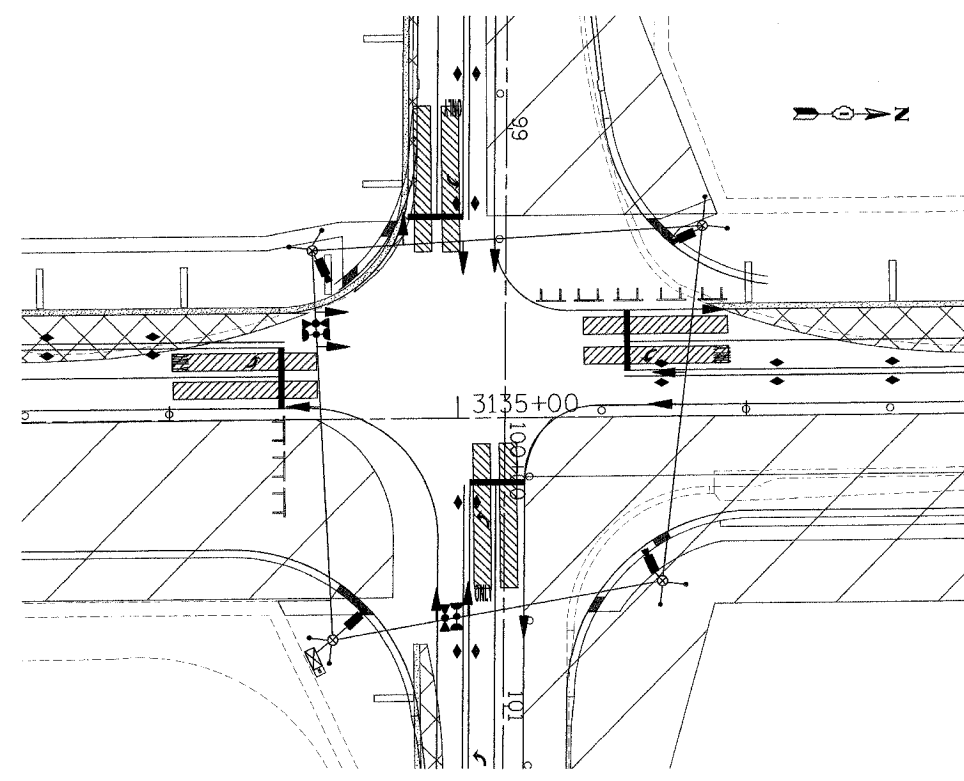
F.A.P. SECTION	COUNTY	TOTAL SHEETS	SHEET NO.
338 114R-1	WILL	355	238
STA.	TO STA.		
FED. ROAD DIST. NO. 1	ILLINOIS FED. AID PROJECT		

PLAN	DATE
BY	
REVISIONS	
1. PLOTTED	
2. CHECKED	
3. APPROVED	
NOTE BOOK	
NO.	

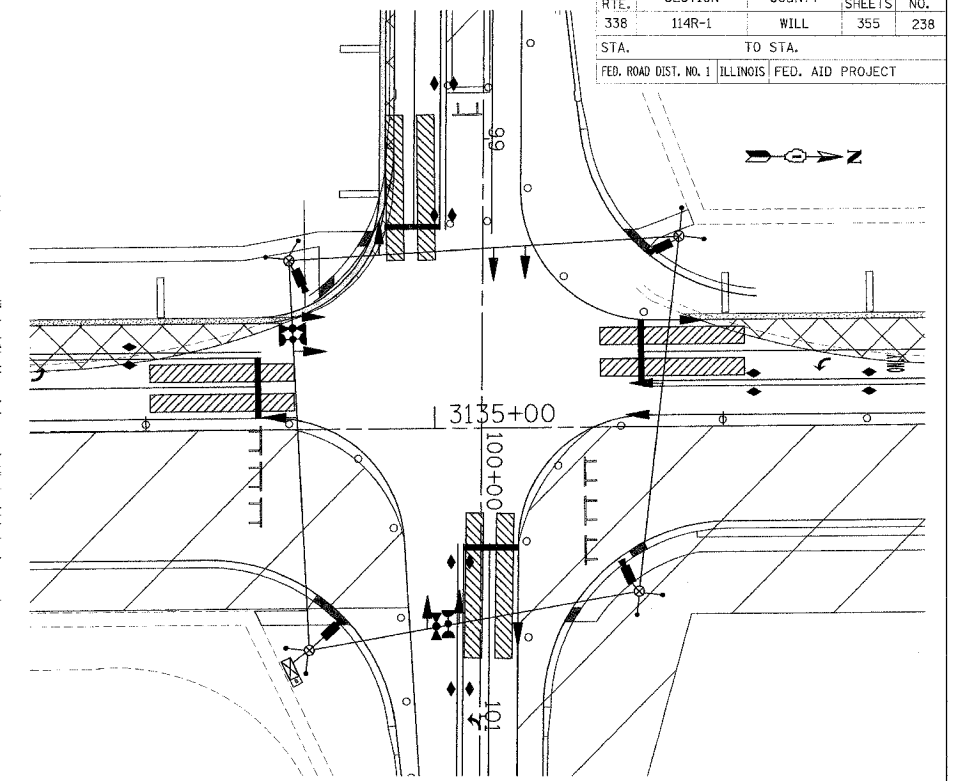
PROFILE	DATE
BY	
REVISIONS	
1. PLOTTED	
2. CHECKED	
3. APPROVED	
NOTE BOOK	
NO.	



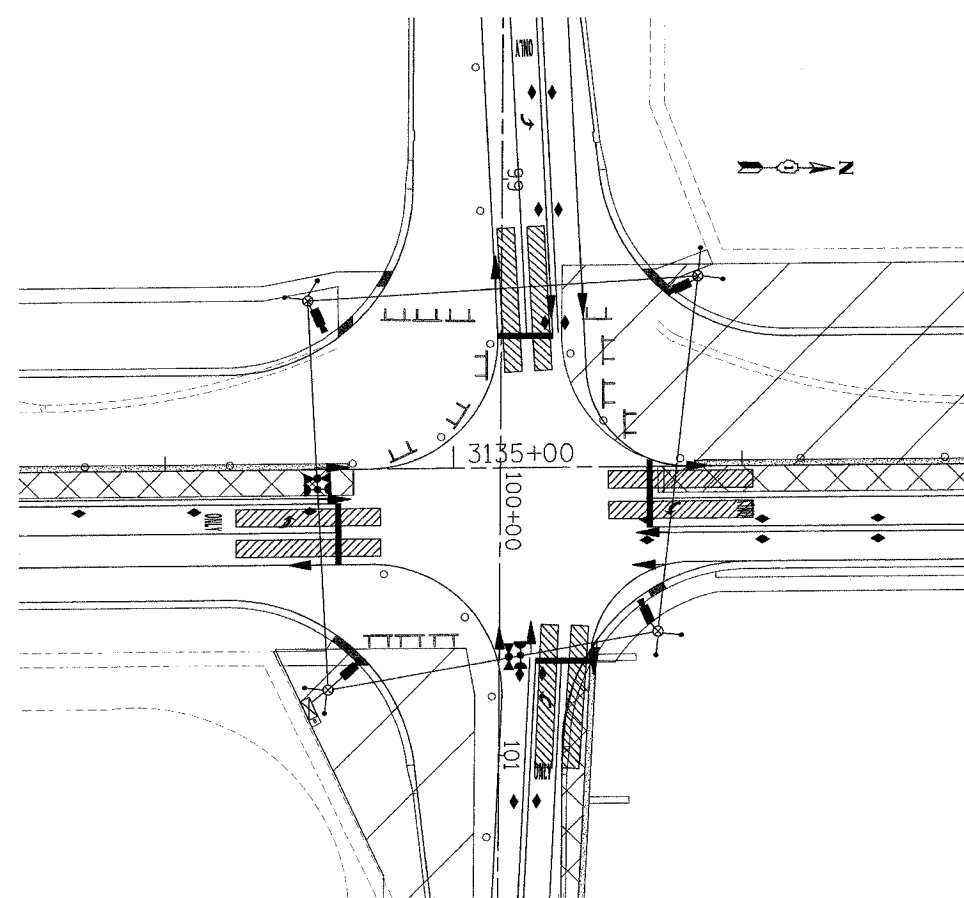
M.O.T. STAGE 1A



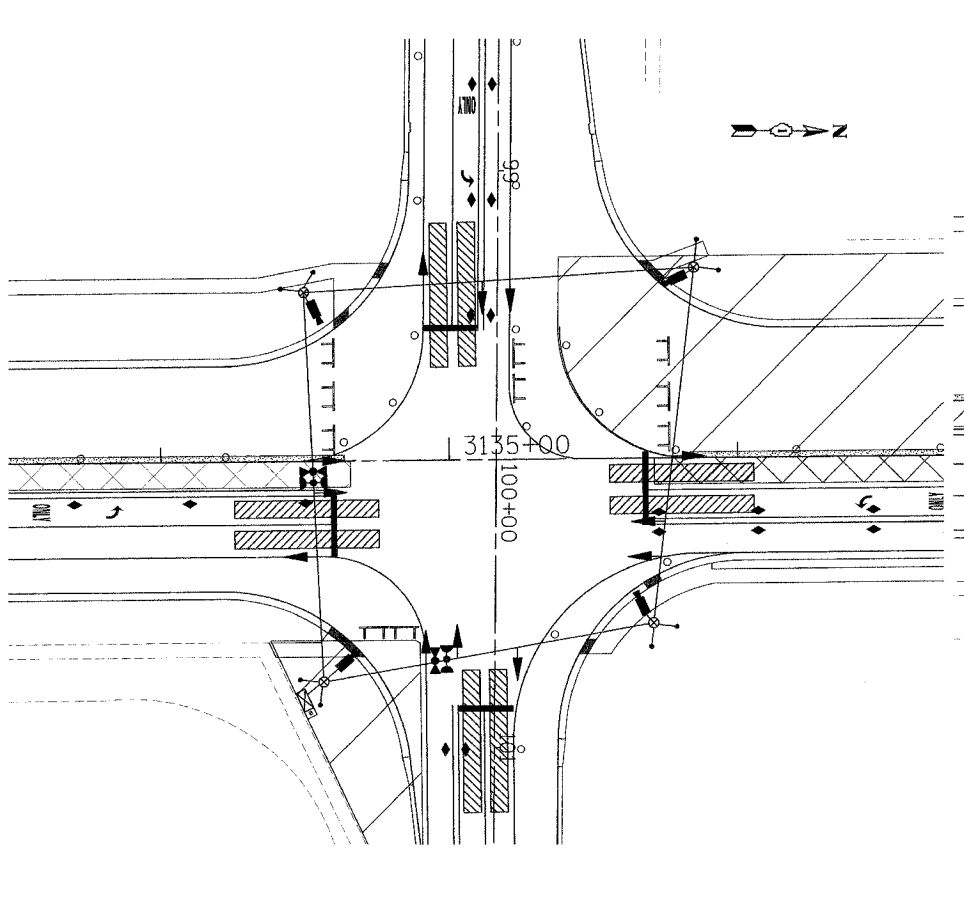
M.O.T. STAGE 1B



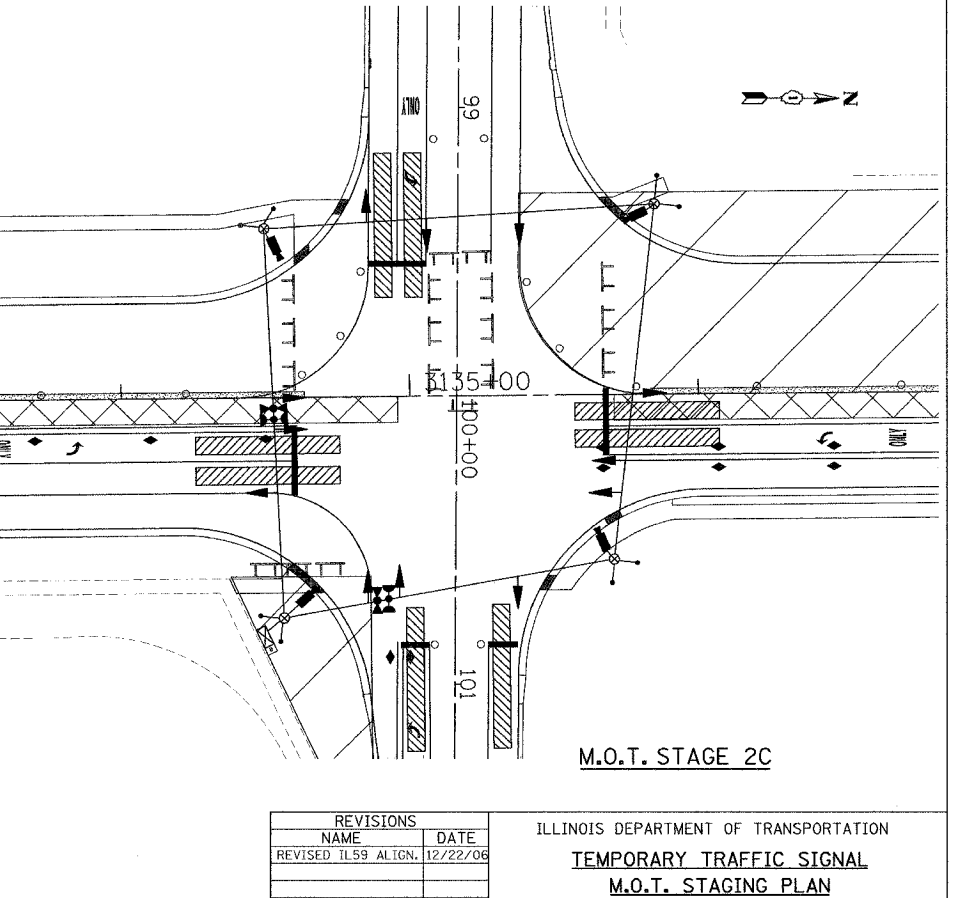
M.O.T. STAGE 1C



M.O.T. STAGE 2A



M.O.T. STAGE 2B



M.O.T. STAGE 2C

REVISIONS	
NAME	DATE
REVISED IL59 ALIGN.	12/22/06

ILLINOIS DEPARTMENT OF TRANSPORTATION
TEMPORARY TRAFFIC SIGNAL
M.O.T. STAGING PLAN
 ILLINOIS ROUTE 59 AT THEODORE STREET

SCALE: NONE
 DATE 3/18/08

DRAWN BY BAR
 DESIGNED BY FA
 CHECKED BY KMM