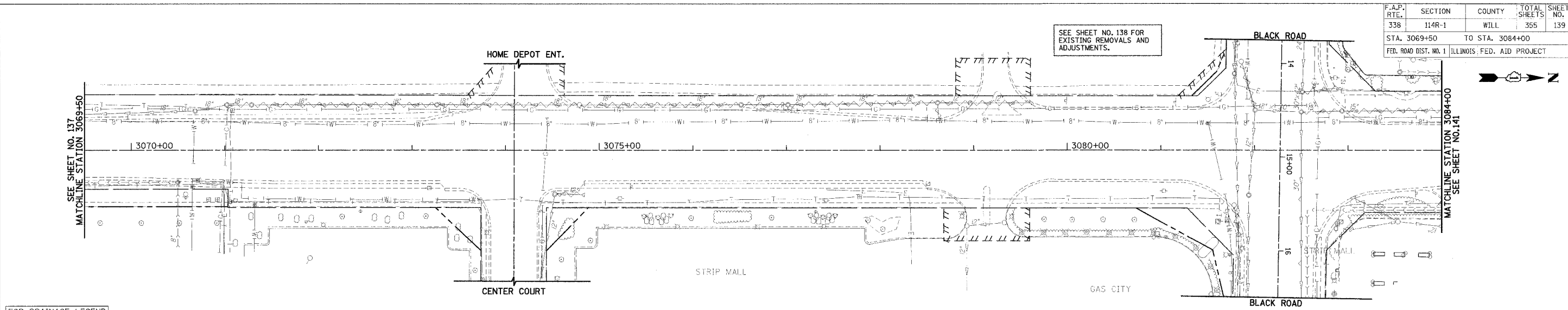


F.A.P. RTE.	SECTION	COUNTY	TOTAL SHEETS	SHEET NO.
338	114R-1	WILL	355	139
STA. 3069+50		TO STA. 3084+00		
FED. ROAD DIST. NO. 1 ILLINOIS FED. AID PROJECT				

SEE SHEET NO. 138 FOR EXISTING REMOVALS AND ADJUSTMENTS.

SEE SHEET NO. 137
MATCHLINE STATION 3069+50

MATCHLINE STATION 3084+00
SEE SHEET NO. 141

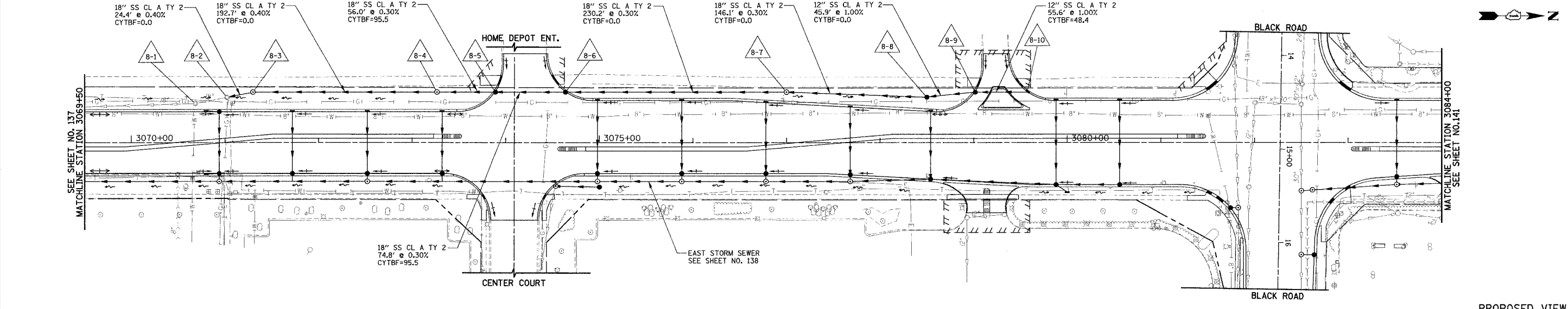


EXISTING VIEW

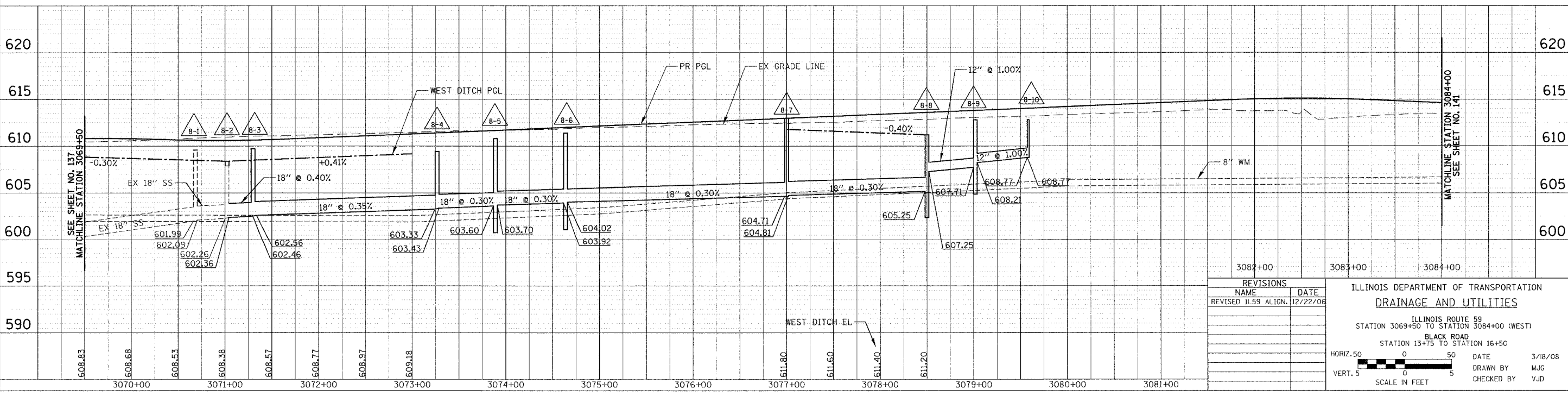
FOR DRAINAGE LEGEND
SEE SHEET NO. 132

SEE SHEET NO. 137
MATCHLINE STATION 3069+50

MATCHLINE STATION 3084+00
SEE SHEET NO. 141

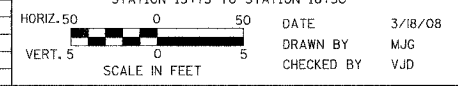


PROPOSED VIEW



REVISIONS	
NAME	DATE
REVISED 1159 ALIGN.	12/22/06

ILLINOIS DEPARTMENT OF TRANSPORTATION
DRAINAGE AND UTILITIES
ILLINOIS ROUTE 59
STATION 3069+50 TO STATION 3084+00 (WEST)
BLACK ROAD
STATION 13+75 TO STATION 16+50



PLAN	DATE
NO.	
BY	
CHECKED	
DATE	
NO.	
BY	
CHECKED	
DATE	
NO.	

PROFILE	DATE
NO.	
BY	
CHECKED	
DATE	
NO.	
BY	
CHECKED	
DATE	
NO.	