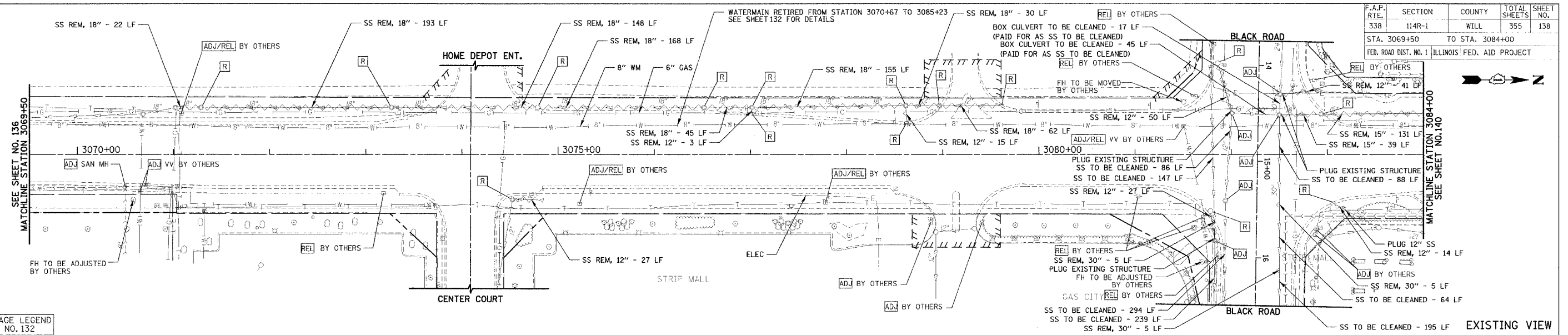
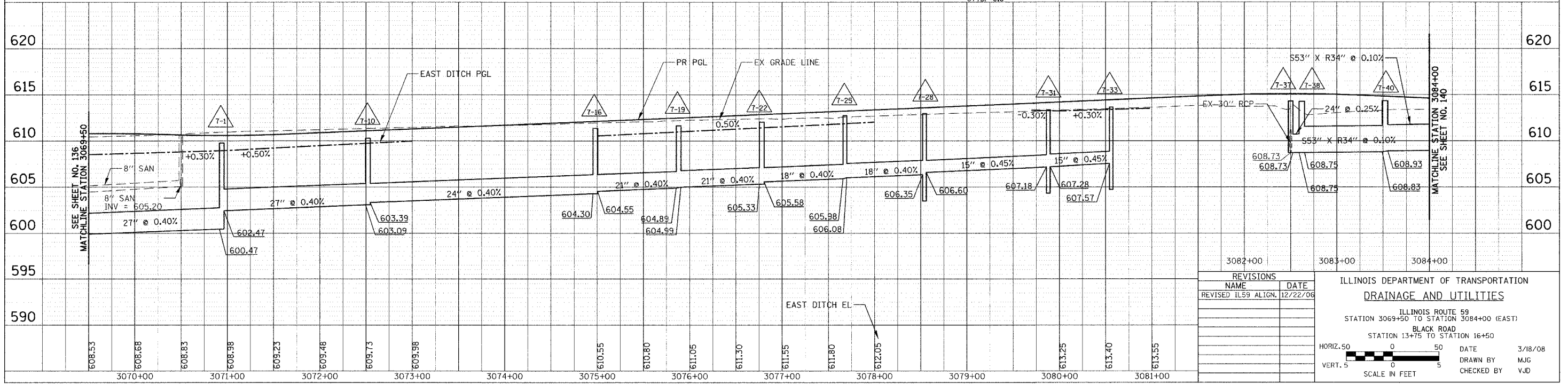
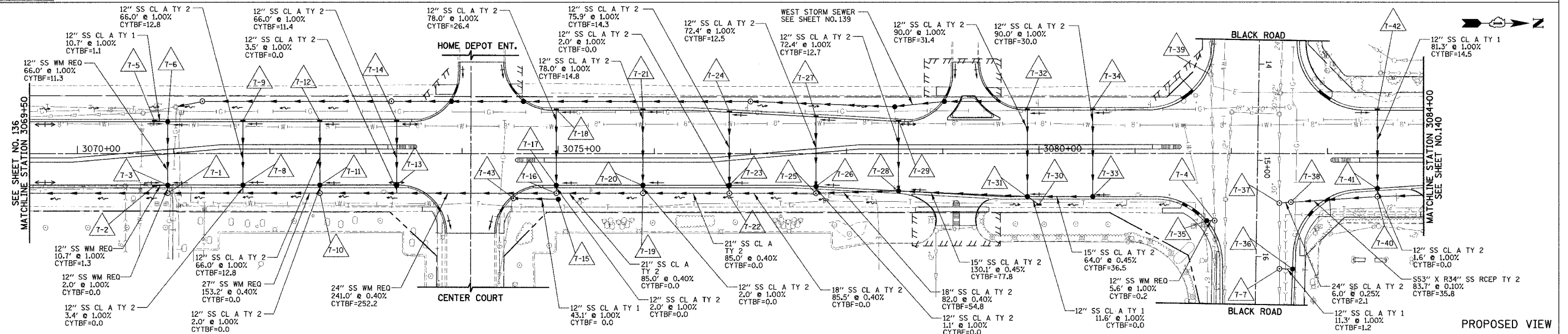


F.A.P. RTE.	SECTION	COUNTY	TOTAL SHEETS	SHEET NO.
338	114R-1	WILL	355	138
STA. 3069+50		TO STA. 3084+00		
FED. ROAD DIST. NO. 1 ILLINOIS FED. AID PROJECT				



FOR DRAINAGE LEGEND  
SEE SHEET NO. 132



REVISIONS	
NAME	DATE
REVISED ILS9 ALIGN.	12/22/06

ILLINOIS DEPARTMENT OF TRANSPORTATION  
**DRAINAGE AND UTILITIES**  
ILLINOIS ROUTE 59  
STATION 3069+50 TO STATION 3084+00 (EAST)  
BLACK ROAD  
STATION 13+75 TO STATION 16+50

HORIZ. 50  
VERT. 5

SCALE IN FEET

DATE 3/18/08  
DRAWN BY MJG  
CHECKED BY VJD

DATE	BY	REVISION
		1.01 TO 1.02
		1.03 TO 1.04
		1.05 TO 1.06
		1.07 TO 1.08
		1.09 TO 1.10
		1.11 TO 1.12
		1.13 TO 1.14
		1.15 TO 1.16
		1.17 TO 1.18
		1.19 TO 1.20
		1.21 TO 1.22
		1.23 TO 1.24
		1.25 TO 1.26
		1.27 TO 1.28
		1.29 TO 1.30
		1.31 TO 1.32
		1.33 TO 1.34
		1.35 TO 1.36
		1.37 TO 1.38
		1.39 TO 1.40
		1.41 TO 1.42
		1.43 TO 1.44
		1.45 TO 1.46
		1.47 TO 1.48
		1.49 TO 1.50
		1.51 TO 1.52
		1.53 TO 1.54
		1.55 TO 1.56
		1.57 TO 1.58
		1.59 TO 1.60
		1.61 TO 1.62
		1.63 TO 1.64
		1.65 TO 1.66
		1.67 TO 1.68
		1.69 TO 1.70
		1.71 TO 1.72
		1.73 TO 1.74
		1.75 TO 1.76
		1.77 TO 1.78
		1.79 TO 1.80
		1.81 TO 1.82
		1.83 TO 1.84
		1.85 TO 1.86
		1.87 TO 1.88
		1.89 TO 1.90
		1.91 TO 1.92
		1.93 TO 1.94
		1.95 TO 1.96
		1.97 TO 1.98
		1.99 TO 2.00

DATE	BY	REVISION
		1.01 TO 1.02
		1.03 TO 1.04
		1.05 TO 1.06
		1.07 TO 1.08
		1.09 TO 1.10
		1.11 TO 1.12
		1.13 TO 1.14
		1.15 TO 1.16
		1.17 TO 1.18
		1.19 TO 1.20
		1.21 TO 1.22
		1.23 TO 1.24
		1.25 TO 1.26
		1.27 TO 1.28
		1.29 TO 1.30
		1.31 TO 1.32
		1.33 TO 1.34
		1.35 TO 1.36
		1.37 TO 1.38
		1.39 TO 1.40
		1.41 TO 1.42
		1.43 TO 1.44
		1.45 TO 1.46
		1.47 TO 1.48
		1.49 TO 1.50
		1.51 TO 1.52
		1.53 TO 1.54
		1.55 TO 1.56
		1.57 TO 1.58
		1.59 TO 1.60
		1.61 TO 1.62
		1.63 TO 1.64
		1.65 TO 1.66
		1.67 TO 1.68
		1.69 TO 1.70
		1.71 TO 1.72
		1.73 TO 1.74
		1.75 TO 1.76
		1.77 TO 1.78
		1.79 TO 1.80
		1.81 TO 1.82
		1.83 TO 1.84
		1.85 TO 1.86
		1.87 TO 1.88
		1.89 TO 1.90
		1.91 TO 1.92
		1.93 TO 1.94
		1.95 TO 1.96
		1.97 TO 1.98
		1.99 TO 2.00