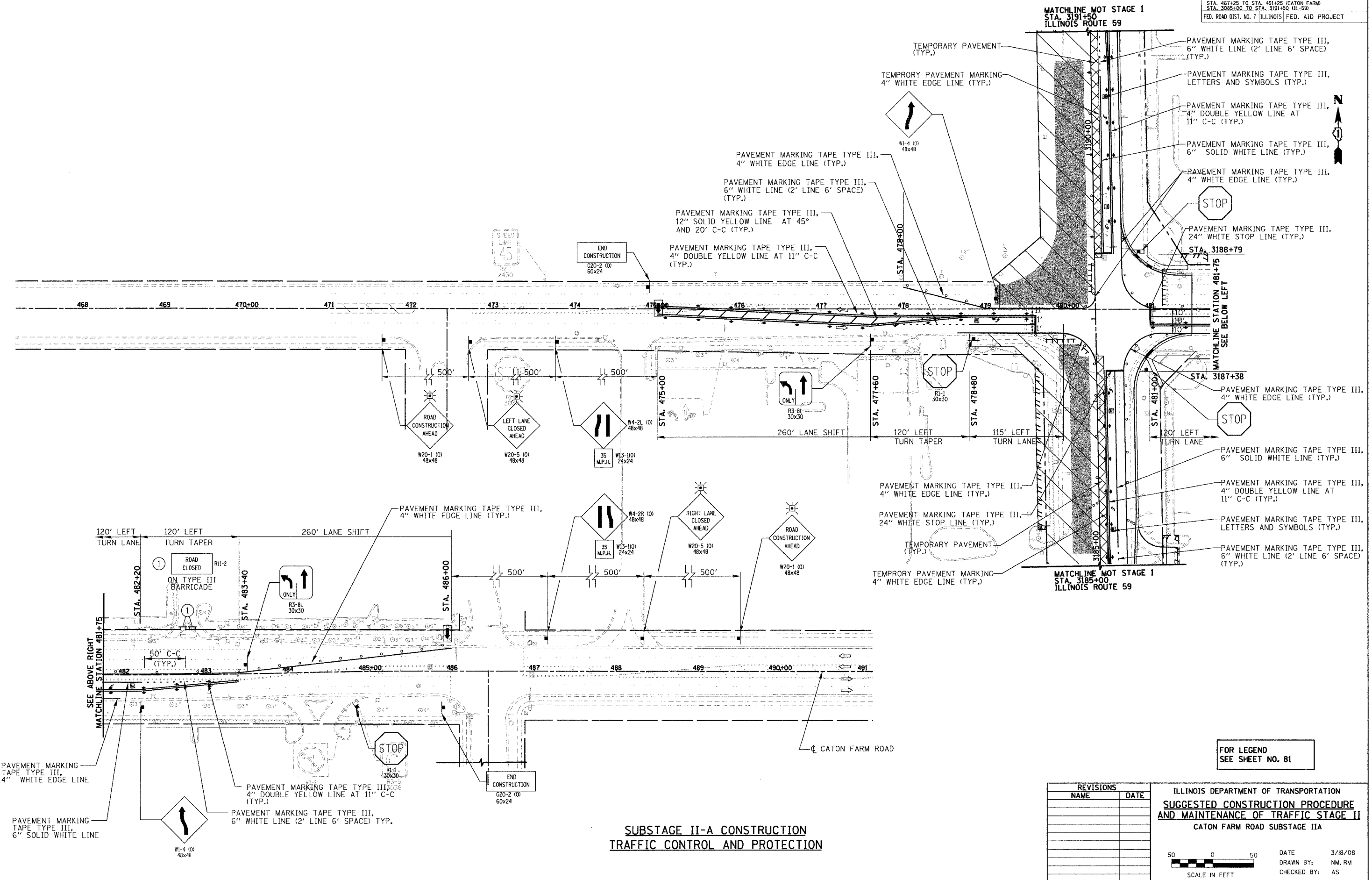


RTE	SECTION	COUNTY	TOTAL SHEETS	SHEET NO.
338	114R-1	WILL	355	112
STA. 467+25 TO STA. 491+25 (CATON FARM) STA. 3085+00 TO STA. 3191+50 (I-59) FED. ROAD DIST. NO. 7 ILLINOIS FED. AID PROJECT				

PLAN	DATE
BY	
REVISIONS	
NO.	
DATE	
BY	
REVISIONS	
NO.	
DATE	
BY	

PROFILE	DATE
BY	
REVISIONS	
NO.	
DATE	
BY	
REVISIONS	
NO.	
DATE	
BY	



**SUBSTAGE II-A CONSTRUCTION
TRAFFIC CONTROL AND PROTECTION**

FOR LEGEND
SEE SHEET NO. 81

REVISIONS		ILLINOIS DEPARTMENT OF TRANSPORTATION	
NAME	DATE	SUGGESTED CONSTRUCTION PROCEDURE AND MAINTENANCE OF TRAFFIC STAGE II	
		CATON FARM ROAD SUBSTAGE IIA	

DATE 3/18/08
DRAWN BY: NM, RM
CHECKED BY: AS

