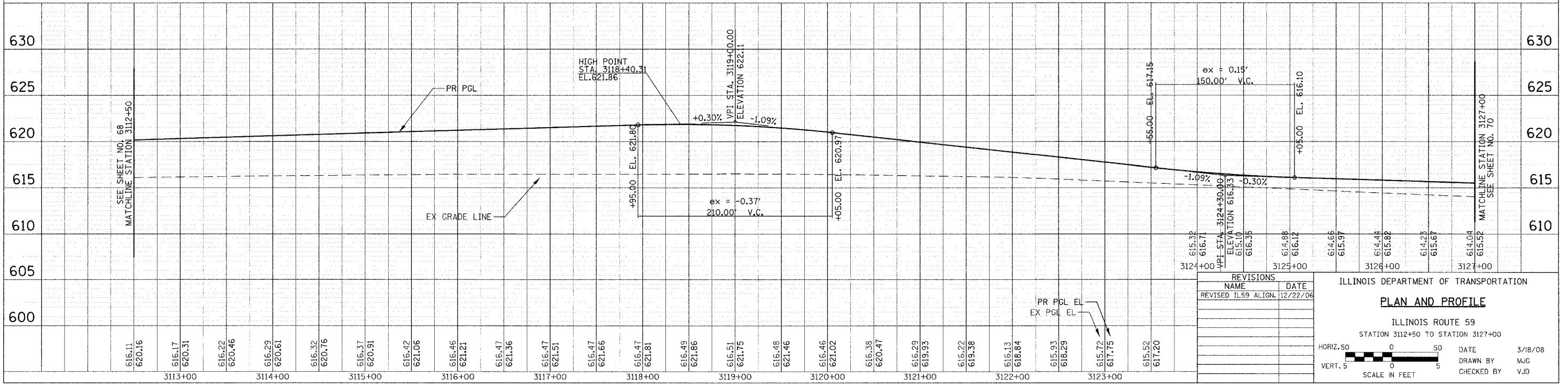
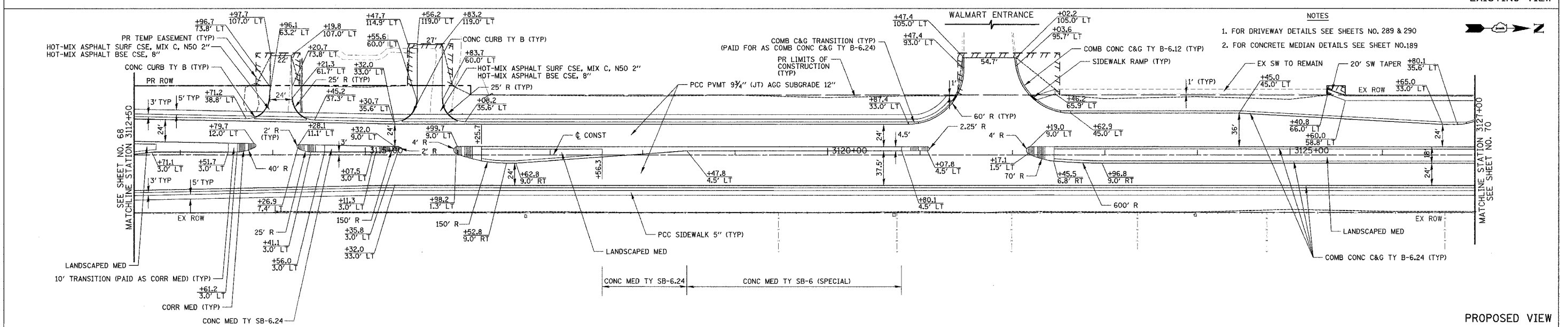
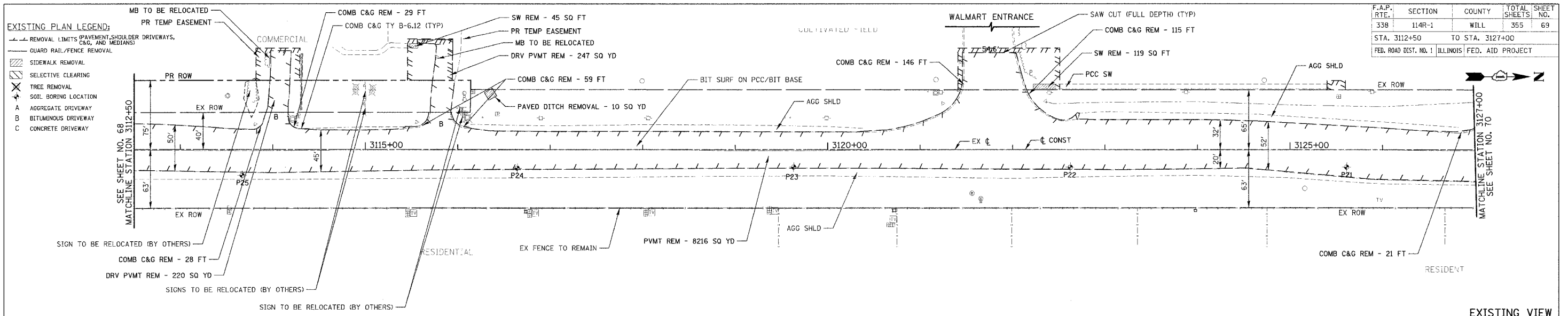


F.A.P. RTE.	SECTION	COUNTY	TOTAL SHEETS	SHEET NO.
338	114R-1	WILL	355	69
STA. 3112+50		TO STA. 3127+00		
FED. ROAD DIST. NO. 1 ILLINOIS FED. AID PROJECT				



REVISIONS	
NAME	DATE
REVISED IL59 ALIGN.	12/22/06

ILLINOIS DEPARTMENT OF TRANSPORTATION

**PLAN AND PROFILE**

ILLINOIS ROUTE 59  
STATION 3112+50 TO STATION 3127+00

HORIZ. 50  
VERT. 5

DATE: 3/18/08  
DRAWN BY: MUG  
CHECKED BY: VJD

PLAN	DATE
REVISED	
NOTED	
NO. BOOK	
NO.	

PROFILE	DATE
REVISED	
NOTED	
NO. BOOK	
NO.	