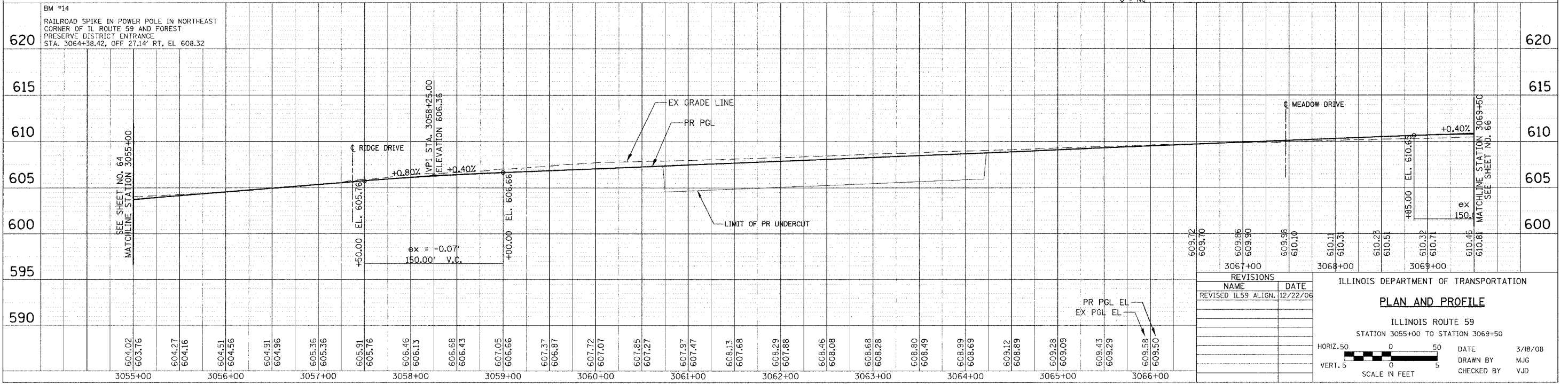
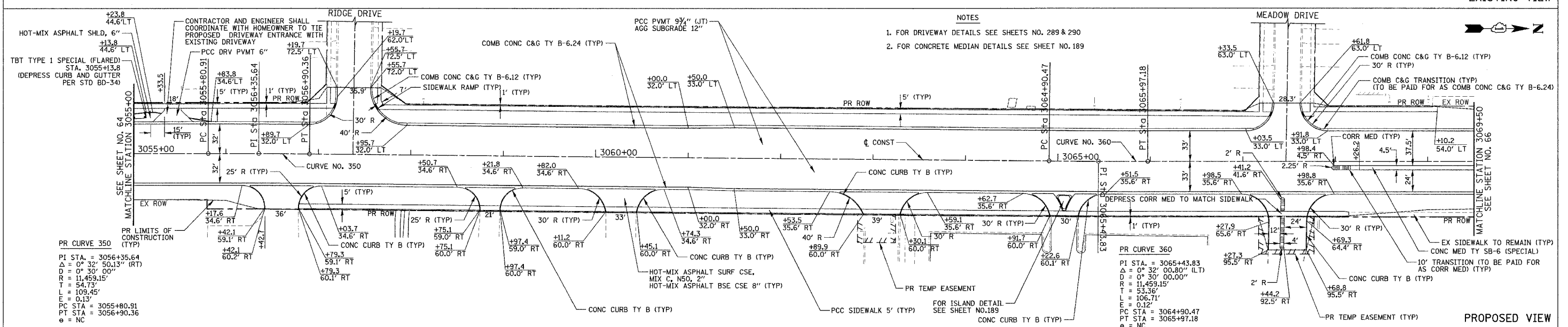


F.A.P. RTE.	SECTION	COUNTY	TOTAL SHEETS	NO.
338	114R-1	WILL	355	65
STA. 3055+00 TO STA. 3069+50		ILLINOIS FED. AID PROJECT		



NO.	REVISIONS	DATE
1	REVISED ILS9 ALIGN.	12/22/06

ILLINOIS DEPARTMENT OF TRANSPORTATION

**PLAN AND PROFILE**

ILLINOIS ROUTE 59  
STATION 3055+00 TO STATION 3069+50

HORIZ. 50 0 50 DATE 3/18/08  
VERT. 5 0 5 DRAWN BY MJG  
SCALE IN FEET CHECKED BY VJD

DATE	BY	REVISIONS
		PLAN

DATE	BY	REVISIONS
		PROFILE