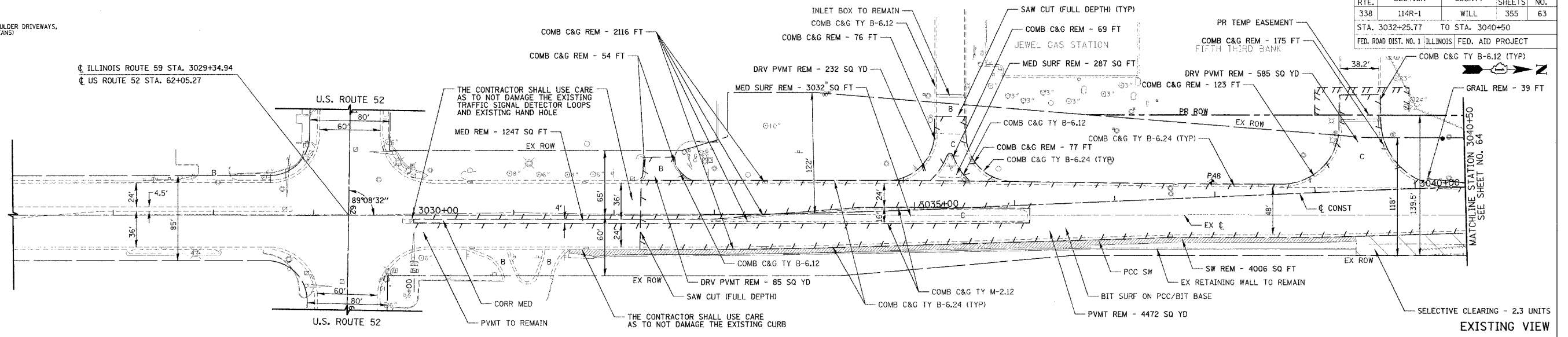


F.A.P. RTE.	SECTION	COUNTY	TOTAL SHEETS	SHEET NO.
338	114R-1	WILL	355	63
STA. 3032+25.77 TO STA. 3040+50		FED. ROAD DIST. NO. 1 ILLINOIS FED. AID PROJECT		

EXISTING PLAN LEGEND:

- REMOVAL LIMITS (PAVEMENT, SHOULDER, DRIVEWAYS, C&G, AND MEDIANS)
- GUARD RAIL/FENCE REMOVAL
- ▨ SIDEWALK REMOVAL
- ▨ SELECTIVE CLEARING
- ✕ TREE REMOVAL
- SOIL BORING LOCATION
- A AGGREGATE DRIVEWAY
- B BITUMINOUS DRIVEWAY
- C CONCRETE DRIVEWAY

CL ILLINOIS ROUTE 59 STA. 3029+34.94
 CL US ROUTE 52 STA. 62+05.27



NOTES

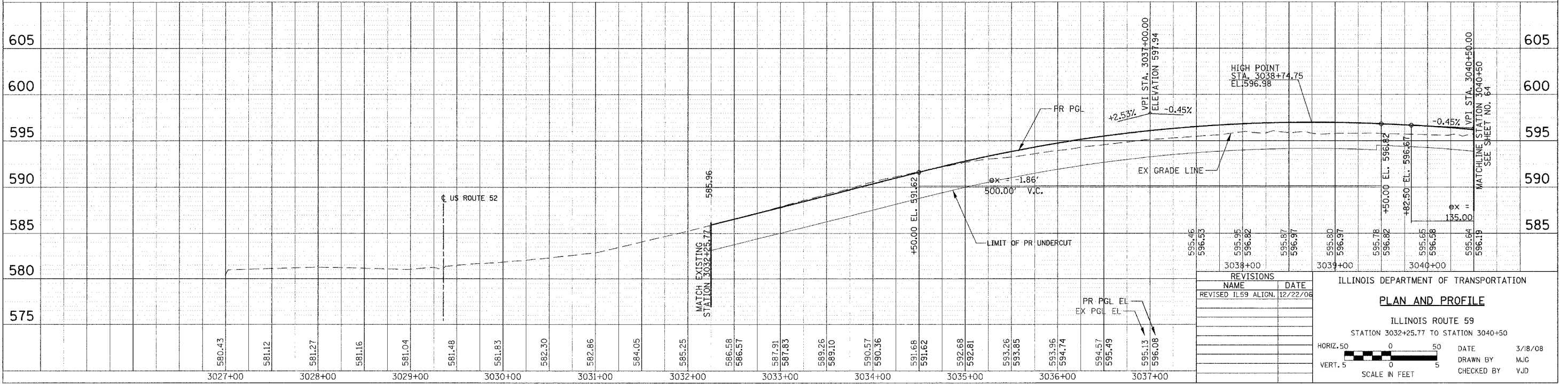
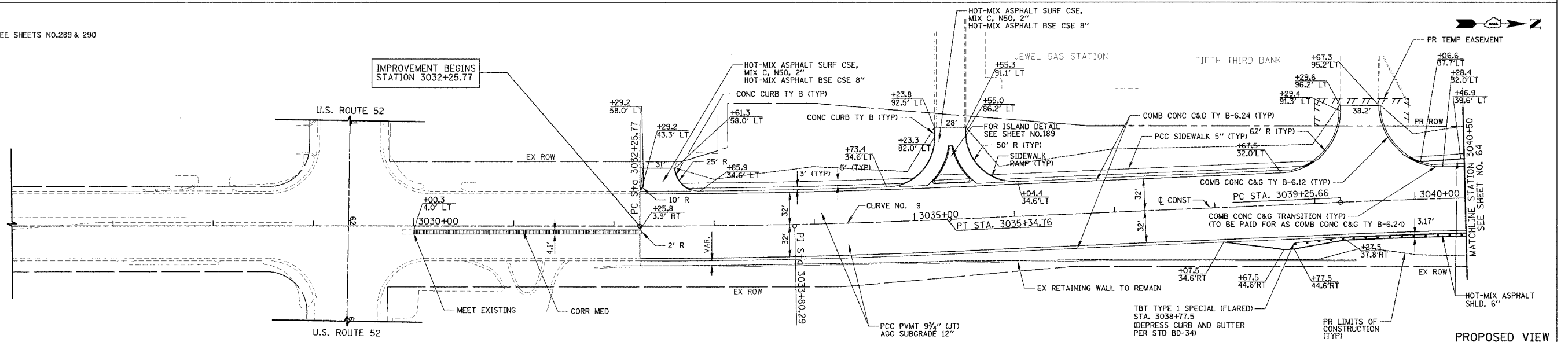
1. FOR DRIVEWAY DETAILS SEE SHEETS NO. 289 & 290

PR CURVE 9

PI STA. = 3033+80.29
 $\Delta = 2^\circ 27' 36.68''$ (LT)
 $D = 0^\circ 47' 46.35''$
 $R = 7,196.07'$
 $T = 154.52'$
 $L = 308.99'$
 $E = 1.66'$
 PC STA = 3032+25.77
 PT STA = 3035+34.76
 $e = NC$

PR CURVE 10

PI STA. = 3042+70.24
 $\Delta = 5^\circ 28' 48.00''$ (RT)
 $D = 0^\circ 47' 44.79''$
 $R = 7,199.99'$
 $T = 344.59'$
 $L = 688.64'$
 $E = 8.24'$
 PC STA = 3039+25.66
 PRC STA = 3046+14.30
 $e = NC$



REVISIONS	NAME	DATE
1	REVISED	12/22/06

ILLINOIS DEPARTMENT OF TRANSPORTATION
PLAN AND PROFILE
 ILLINOIS ROUTE 59
 STATION 3032+25.77 TO STATION 3040+50

HORIZ. 50
 VERT. 5

DATE 3/8/08
 DRAWN BY MJG
 CHECKED BY VJD

DATE	BY	REVISION

DATE	BY	REVISION