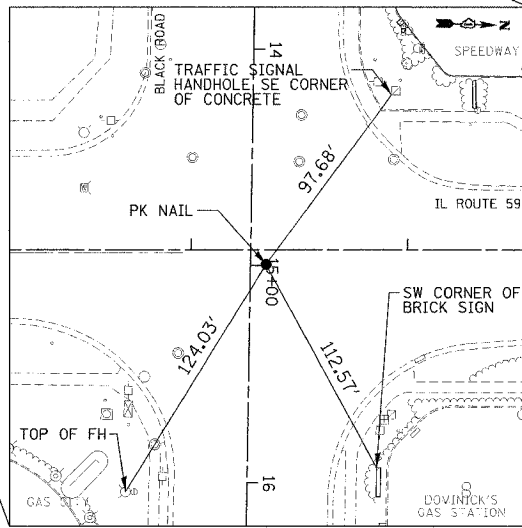
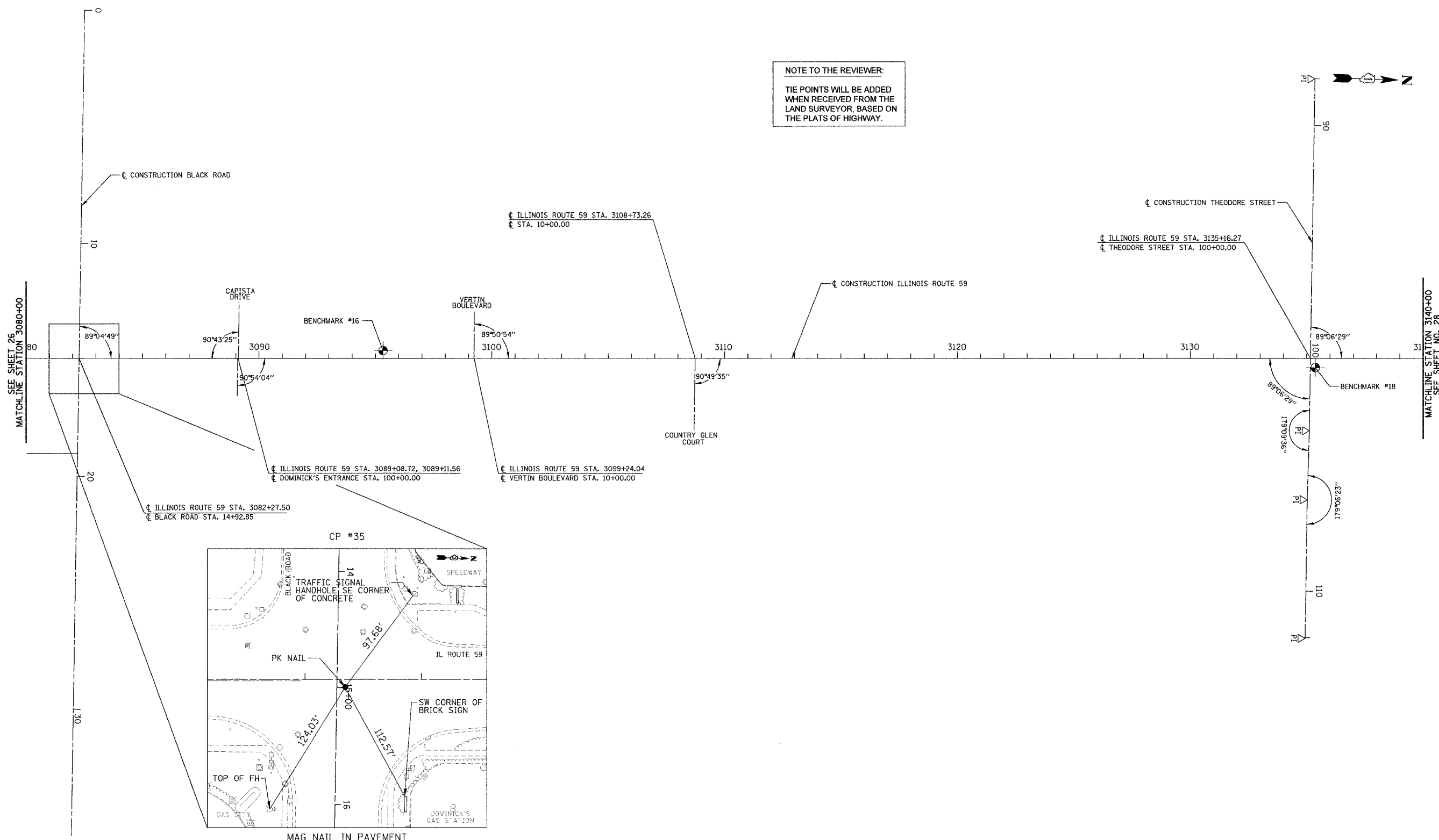


F.A.P. RTE.	SECTION	COUNTY	TOTAL SHEETS	SHEET NO.
338	114R-1	WILL	355	27
STA. 3080+00		TO STA. 3140+00		
FED. ROAD DIST. NO. 1 ILLINOIS FED. AID PROJECT				

NOTE TO THE REVIEWER:
TIE POINTS WILL BE ADDED WHEN RECEIVED FROM THE LAND SURVEYOR, BASED ON THE PLATS OF HIGHWAY.



BENCHMARK #16
"X" IN NORTHEAST BOLT OF FIRE HYDRANT AT THE NORTHEAST CORNER OF FCA CARPET STORE PROPERTY
STA. 3095+30.13
OFFSET 32.26' LT
ELEVATION 614.05

BENCHMARK #18
"□" CUT IN CENTER OF 8' HEAD WALL IN NORTHEAST CORNER OF IL ROUTE 59 AND THEODORE ST
STA. 3135+38.30
OFFSET 43.34' RT
ELEVATION 610.81

PROPOSED CONSTRUCTION BLACK ROAD
PI STA. = 0+00.00 (N=-1,773,544.6120 E=1,019,474.3350)
PI STA. = 35+44.68 (N=-1,773,596.7270 E=1,023,018.6280)

PROPOSED CONSTRUCTION THEODORE STREET
PI STA. = 88+00.00 (N=-1,778,834.6160 E=1,019,604.5149)
PI STA. = 103+10.64 (N=-1,778,857.5555 E=1,021,174.9779)
PI STA. = 106+08.00 (N=-1,778,857.7116 E=1,021,412.3398)
PI STA. = 112+03.16 (N=-1,778,867.3054 E=1,022,007.4224)

REVISIONS	
NAME	DATE
REVISED IL 59 ALIGN.	12/22/06

ILLINOIS DEPARTMENT OF TRANSPORTATION
ALIGNMENT, TIES AND BENCHMARKS
ILLINOIS ROUTE 59

DATE 3/18/08
DRAWN BY MJG
CHECKED BY VJD

PLAN	DATE
REVISED	DATE
NO. OF WORK	NO. OF WORK
NO. OF SHEETS	NO. OF SHEETS
NO. OF PAGES	NO. OF PAGES

PROFILE	DATE
REVISED	DATE
NO. OF WORK	NO. OF WORK
NO. OF SHEETS	NO. OF SHEETS
NO. OF PAGES	NO. OF PAGES