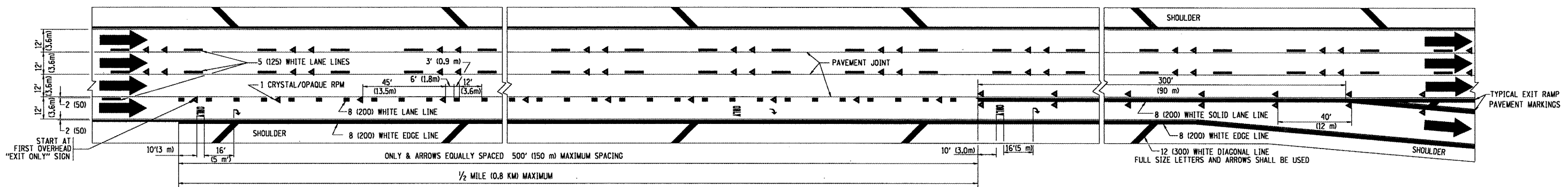
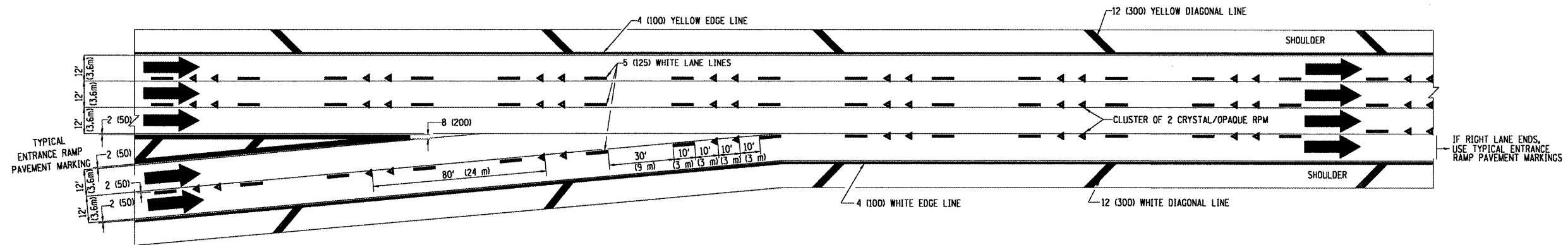


TYPICAL ENTRANCE/EXIT RAMP COMBINATION PAVEMENT MARKINGS



TYPICAL EXIT ONLY LANE PAVEMENT MARKINGS



TYPICAL TWO LANE ENTRANCE RAMP PAVEMENT MARKINGS

FILE NAME = \\dist\ntf2\users\smthk1\Desktop\CADD	USER NAME = smthk1	DESIGNED - D.W.S.	REVISED - A.H. 03-96	STATE OF ILLINOIS DEPARTMENT OF TRANSPORTATION	MULTI-LANE FREEWAY PAVEMENT MARKING DETAILS		F.A. RTE.	SECTION	COUNTY	TOTAL SHEETS	SHEET NO.	
DETAILS\tcl2.dgn		DRAWN -	REVISED - D.W.S. 07-96		SCALE: NONE	SHEET NO. 1 OF 2 SHEETS	STA.	TO STA.	2008-048 PP	COOK & WILL	13	11
PLOT SCALE = 1/8" = 1'-0"		CHECKED -	REVISED - J.A.F. 02-06						TC-12	CONTRACT NO. 60E97		
PLOT DATE = 6/24/2008		DATE - 01-90	REVISED - S.P.B. 01-07						FED. ROAD DIST. NO. 1	ILLINOIS FED. AID PROJECT		