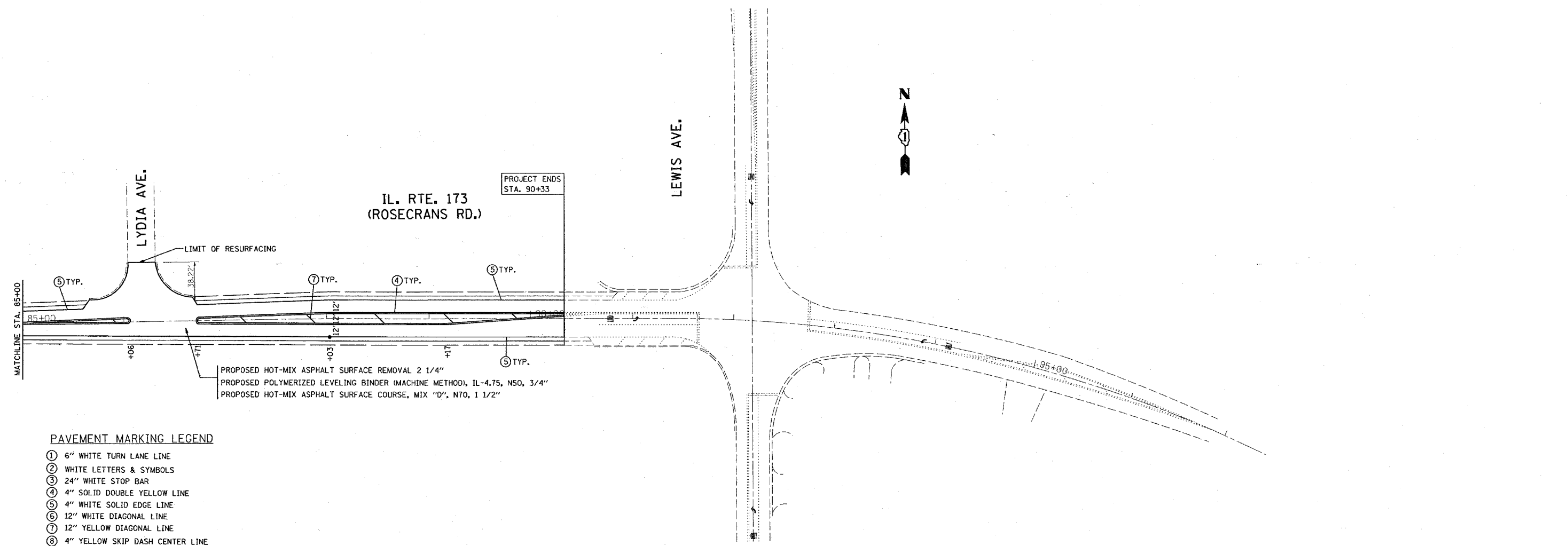
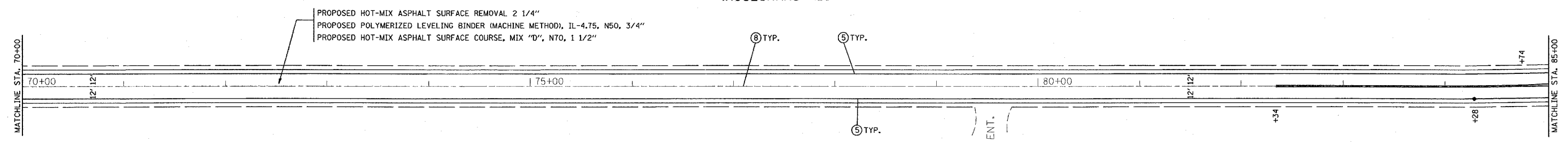




IL. RTE. 173
(ROSECRANS RD.)



PAVEMENT MARKING LEGEND

- ① 6" WHITE TURN LANE LINE
- ② WHITE LETTERS & SYMBOLS
- ③ 24" WHITE STOP BAR
- ④ 4" SOLID DOUBLE YELLOW LINE
- ⑤ 4" WHITE SOLID EDGE LINE
- ⑥ 12" WHITE DIAGONAL LINE
- ⑦ 12" YELLOW DIAGONAL LINE
- ⑧ 4" YELLOW SKIP DASH CENTER LINE

STATE OF ILLINOIS
DEPARTMENT OF TRANSPORTATION

PROPOSED ROADWAY AND PAVEMENT MARKING PLAN
IL. RTE. 173 (ROSECRANS RD.) IL. RTE. 131 TO LEWIS AVE.

FILE NAME = c:\projects\vd137608\sh_rdw.dgn	USER NAME = obreauch	DESIGNED -	REVISED -
		DRAWN -	REVISED -
		CHECKED -	REVISED -
		DATE -	REVISED -

SCALE: 1"=50' SHEET NO. 3 OF 3 SHEETS STA. 70+00 TO STA. 97+00

F.A.P. RTE.	SECTION	COUNTY	TOTAL SHEETS	SHEET NO.
303	136 RS-S	LAKE	23	9
FED. ROAD DIST. NO. 1 [ILLINOIS] FED. AID PROJECT				CONTRACT NO. 60E44