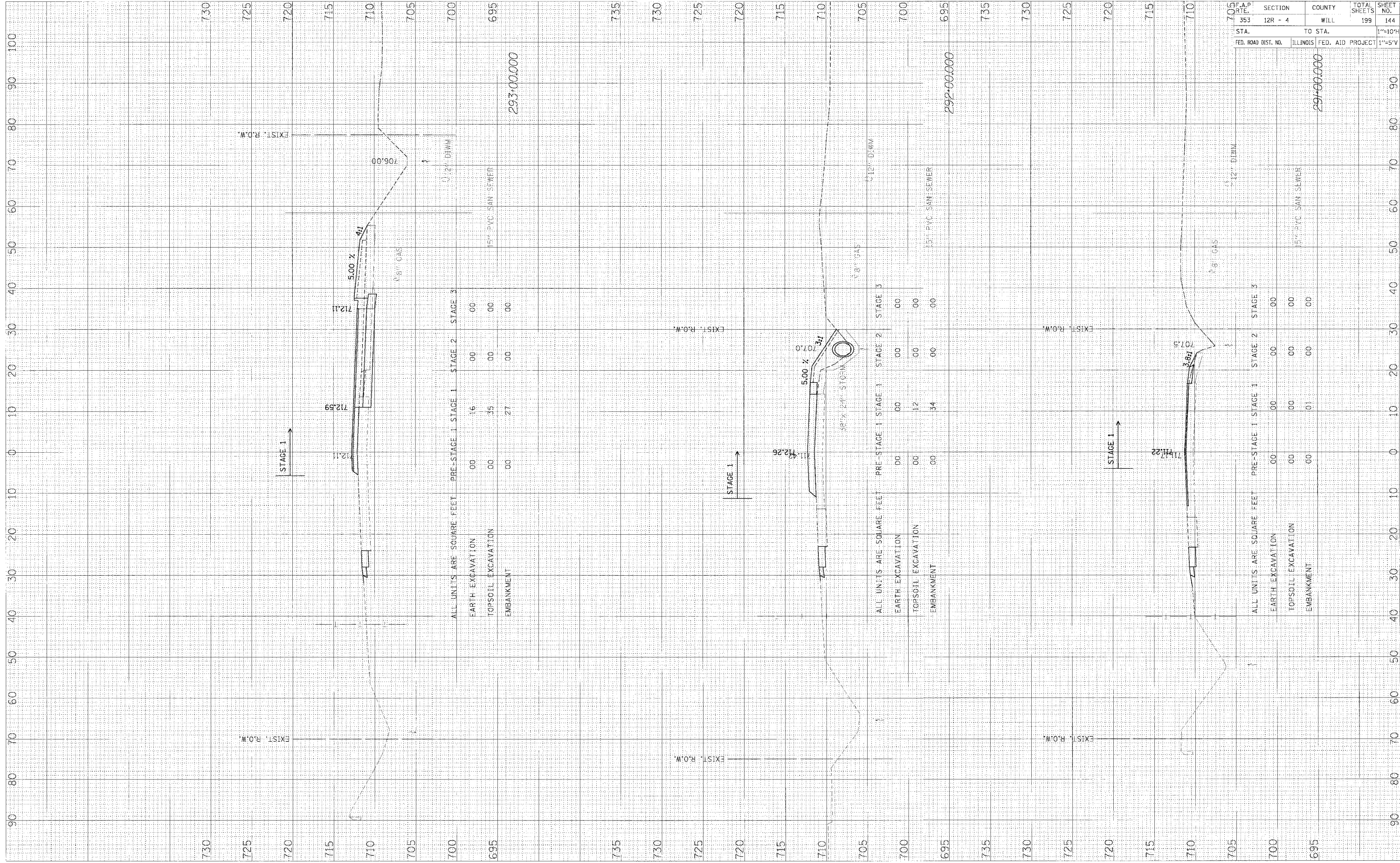


FINAL	DATE
SURVEY	BY
NOTED	
REVISIONS	
NO.	DESCRIPTION

ORIGINAL	DATE
SURVEY	BY
NOTED	
REVISIONS	
NO.	DESCRIPTION



F.A.P. NO.	SECTION	COUNTY	TOTAL SHEETS	SHEET NO.
353	12R - 4	WILL	199	144
STA.	TO STA.		1"=10'H	
FED. ROAD DIST. NO.	ILLINOIS	FED. AID PROJECT	1"=5'V	

HWY30P2 Work\_1304-SWSEC.dwg 5/28/2008