




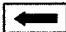




| | | | | |
|---------------------|---------|---------------------------|--------------|-----------|
| F.A.P. RTE. | SECTION | COUNTY | TOTAL SHEETS | SHEET NO. |
| 353 | 12R-4 | WILL | 199 | 115 |
| STA. | | TO STA. | | |
| FED. ROAD DIST. NO. | | ILLINOIS FED. AID PROJECT | | |

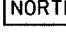
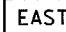
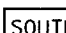
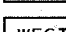
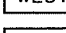
ROUTE MARKERS

-  FOR U.S. ROUTES
M1-40-2424
-  FOR ILLINOIS ROUTES
M1-50-2424
-  R.R. UNMARKED ROUTES
SPECIAL 24" x 18" VARIABLE
4" BLACK LETTERS ON WHITE
REFLECTIVE BACKGROUND

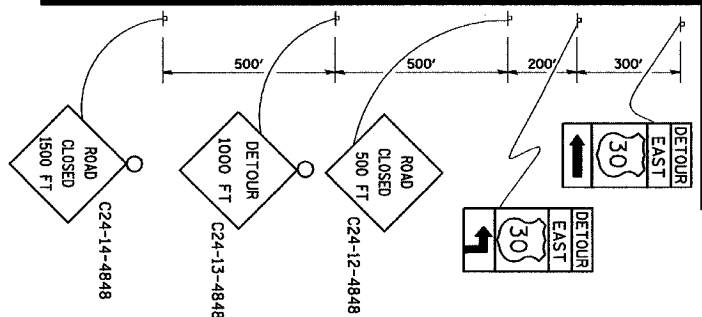
ARROWS SIGNS

-  M5-1L-2115
-  M5-1R-2115
-  M6-1L-2115
-  M6-1R-2115
-  M6-3-2115

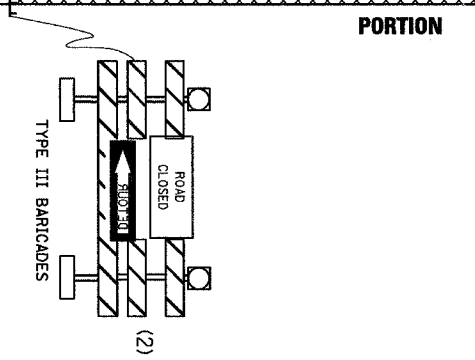
CARDINAL DIRECTION & DETOUR SIGNS

-  NORTH M3-1-219
-  EAST M3-2-219
-  SOUTH M3-3-219
-  WEST M3-4-219
-  DETOUR M1-7-219

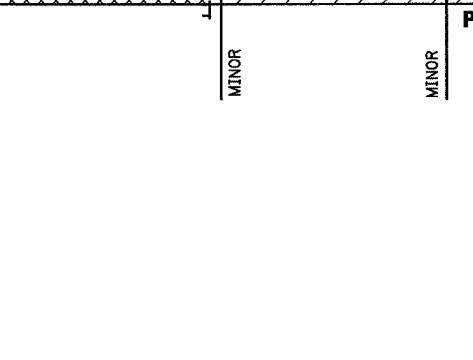
STATE ROUTE



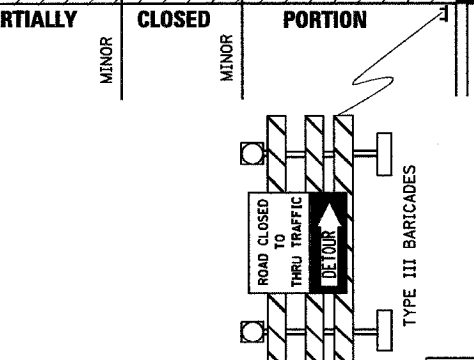
COMPLETELY CLOSED PORTION



PARTIALLY CLOSED PORTION



STATE ROUTE



| REVISIONS | | ILLINOIS DEPARTMENT OF TRANSPORTATION |
|-----------|----------|--|
| NAME | DATE | |
| | 10/18/02 | <p>TYPICAL MARKING FOR CLOSING STATE HIGHWAYS</p> <p>SCALE: NONE</p> <p>DRAWN BY _____ CHECKED BY _____ TC-21</p> |
| | | |
| | | |
| | | |
| | | |

DATE: 9/7/2007
 FILE NAME: 10/18/02
 PLOT SCALE: 80/8000
 USER NAME: broun-d