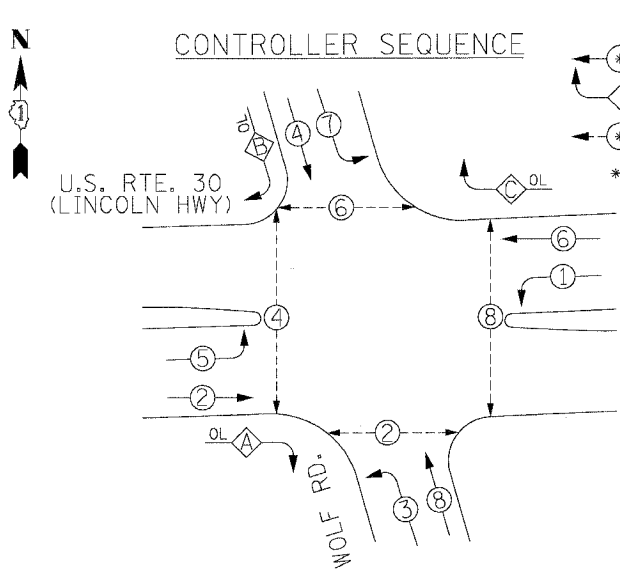
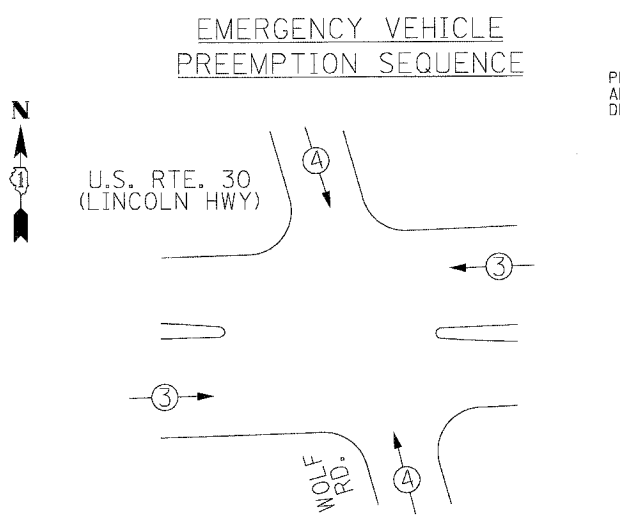


F.A.P. RTE.	SECTION	COUNTY	TOTAL SHEETS	SHEET NO.
353	12R - 4	WILL	199	100
STA.	TO STA.			
FED. ROAD DIST. NO.	ILLINOIS	FED. AID PROJECT		



PHASE DESIGNATION DIAGRAM

OVERLAP LETTER	PERMISSIVE PHASE	PROTECTED PHASE
A	2	3
B	4	5
C	3	7



PROPOSED EMERGENCY VEHICLE PREEMPTORS

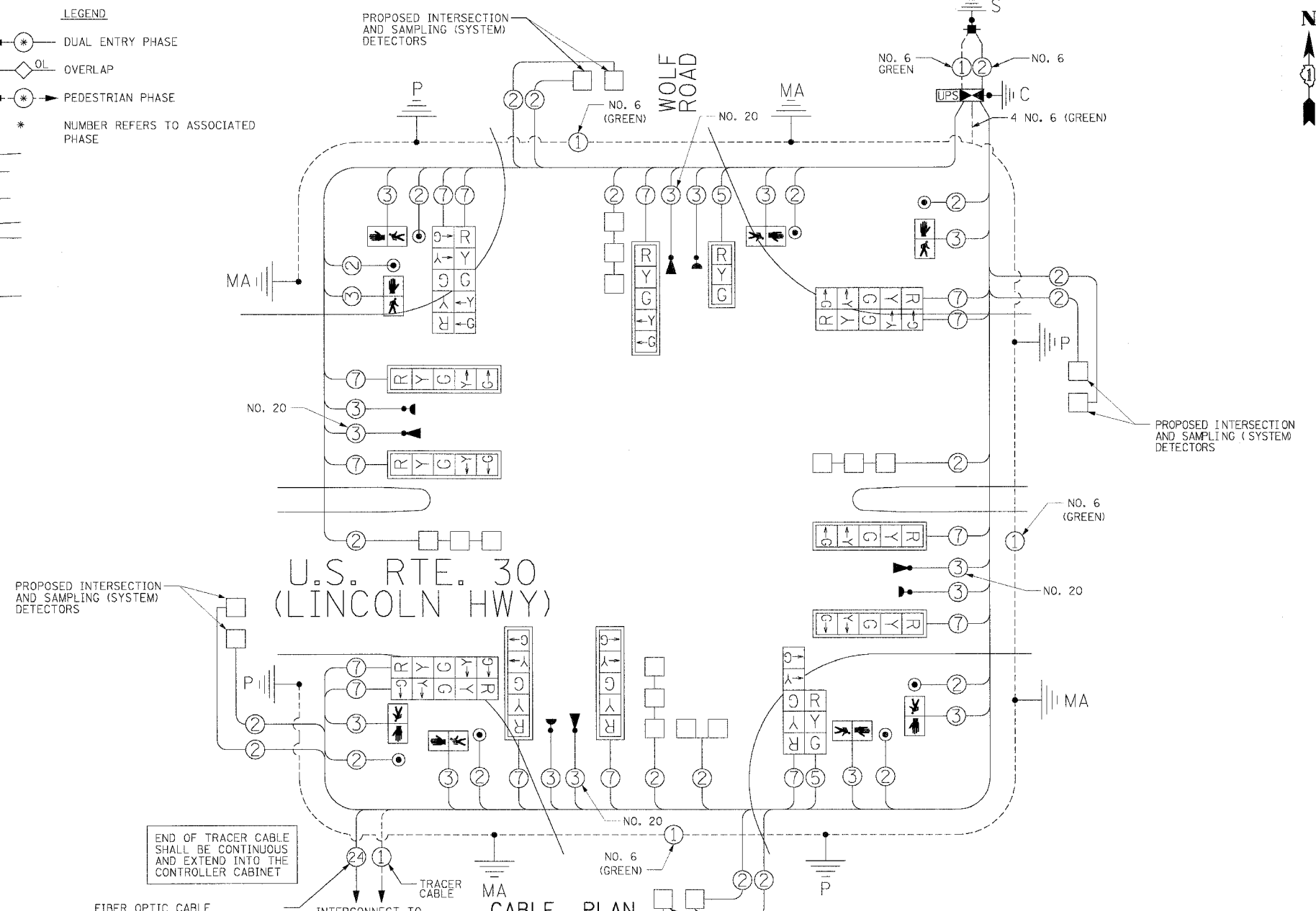
EMERGENCY VEHICLE PREEMPTORS	3	4
MOVEMENT	←	↑

I.D.O.T. TRAFFIC SIGNAL INSTALLATION ELECTRICAL SERVICE REQUIREMENTS

TYPE	NO. LAMPS	WATTAGE INCAND.	WATTAGE LED	%OPERATION	TOTAL WATTAGE
SIGNAL (RED)	16	-	17	0.50	136.00
(YELLOW)	16	-	25	0.25	100.00
(GREEN)	16	-	15	0.25	60.00
ARROW	28	-	12	0.10	33.60
PED. SIGNAL	8	-	25	1.00	200.00
CONTROLLER	1	-	100	1.00	100.00
ILLUM. SIGN				0.05	-
FLASHER				0.50	-
ENERGY COSTS TO:					TOTAL = 629.60

ILLINOIS DEPARTMENT OF TRANSPORTATION
 201 WEST CENTER COURT
 SCHAMBURG, ILLINOIS 60196-1096
 ENERGY SUPPLY CONTACT: MR. HARRY JONES
 PHONE: (815) 724-5057
 COMPANY: COM. ED.

- LEGEND**
- DUAL ENTRY PHASE
 - OVERLAP
 - PEDESTRIAN PHASE
 - NUMBER REFERS TO ASSOCIATED PHASE



SCHEDULE OF QUANTITIES

ITEM	UNIT	QUANTITY	ITEM	UNIT	QUANTITY
SIGN PANEL - TYPE 1	50 FT	12	CONCRETE FOUNDATION, TYPE A	FOOT	16
SIGN PANEL - TYPE 2	50 FT	30	CONCRETE FOUNDATION, TYPE D	FOOT	4
CONDUIT IN TRENCH, 2" DIA., GALVANIZED STEEL	FOOT	1304	CONCRETE FOUNDATION, TYPE E 36-INCH DIAMETER	FOOT	60
CONDUIT IN TRENCH, 2 1/2" DIA., GALVANIZED STEEL	FOOT	241	SIGNAL HEAD, LED, 1-FACE, 3-SECTION, MAST-ARM MOUNTED	EACH	1
CONDUIT IN TRENCH, 5" DIA., GALVANIZED STEEL	FOOT	10	SIGNAL HEAD, LED, 1-FACE, 5-SECTION, MAST-ARM MOUNTED	EACH	7
CONDUIT PUSHED, 2" DIA., GALVANIZED STEEL	FOOT	421	SIGNAL HEAD, LED, 2-FACE, 5-SECTION, BRACKET MOUNTED	EACH	3
CONDUIT PUSHED, 4" DIA., GALVANIZED STEEL	FOOT	642	SIGNAL HEAD, LED, 2-FACE, 1-3 SECTION, 1-5 SECTION, BRACKET MOUNTED	EACH	1
HANDHOLE	EACH	8	TRAFFIC SIGNAL BACKPLATE, LOUVERED, ALUMINUM	EACH	8
HEAVY-DUTY HANDHOLE	EACH	4	PEDESTRIAN PUSH-BUTTON	EACH	8
DOUBLE HANDHOLE	EACH	2	PEDESTRIAN SIGNAL HEAD, LED, 1-FACE, BRACKET MOUNTED	EACH	8
TRENCH AND BACKFILL FOR ELECTRICAL WORK	FOOT	1555	INDUCTIVE LOOP DETECTOR	EACH	9
MAINTENANCE OF EXISTING TRAFFIC SIGNAL INSTALLATION	EACH	1	DETECTOR LOOP, TYPE 1	FOOT	772
MASTER CONTROLLER (SPECIAL)	EACH	1	REMOVE EXISTING TRAFFIC SIGNAL EQUIPMENT	EACH	1
TRANSCEIVER - FIBER OPTIC	EACH	1	RELOCATE EXISTING EMERGENCY VEHICLE PRIORITY SYSTEM, DETECTOR UNIT	EACH	4
ELECTRIC CABLE IN CONDUIT, SIGNAL NO. 14 2C	FOOT	1824	RELOCATE EXISTING EMERGENCY VEHICLE PRIORITY SYSTEM, PHASING UNIT	EACH	1
ELECTRIC CABLE IN CONDUIT, SIGNAL NO. 14 3C	FOOT	3145	OPTIMIZE TRAFFIC SIGNAL SYSTEM	EACH	1
ELECTRIC CABLE IN CONDUIT, SIGNAL NO. 14 5C	FOOT	357	SERVICE INSTALLATION - POLE MOUNTED	EACH	1
ELECTRIC CABLE IN CONDUIT, SIGNAL NO. 14 7C	FOOT	3810	ELECTRIC CABLE IN CONDUIT, GROUNDING, NO. 6 1C	FOOT	2167
ELECTRIC CABLE IN CONDUIT, LEAD-IN, NO. 14 1 PAIR	FOOT	5314	ELECTRIC CABLE IN CONDUIT, NO. 20 3/C, TWISTED, SHIELDED	FOOT	1270
ELECTRIC CABLE IN CONDUIT, SERVICE, NO. 6 2C	FOOT	63	MODIFY TEMPORARY TRAFFIC SIGNAL INSTALLATION	EACH	1
TRAFFIC SIGNAL POST, GALVANIZED STEEL 16 FT.	EACH	4	UNINTERRUPTABLE POWER SUPPLY	EACH	1

ITEM	FT. (m)	CABLE SLACK	FT. (m)	VERTICAL	FT. (m)
TYPE A - POST	4 (1.2)	HANDHOLE	6.5 (2.0)	ALL FOUNDATIONS	3.5 (1.0)
D - CONTROLLER	4 (1.2)	DOUBLE HANDHOLE	13 (4.0)	MAST ARM (L) POLE	20'+L-2'
E - M. ARM POLE		SIGNAL POST	2 (1.0)		(6mH-0.6m)
LGTH. <=60', 36" (900)	15 (4.6)	CONTROLLER CAB.	1 (0.5)	BRACKET MOUNTED	13 (4.0)
		FIBER OPTIC	13 (4.0)	PED. PUSHBUTTON	4 (1.2)
		ELECTRIC SERVICE	1 (0.5)	ELECTRIC SERVICE	13.5 (4.1)
		GROUND CABLE	1 (0.5)	SERVICE TO GROUND	13.5 (4.1)
				POST MOUNTED	6 (1.8)

- CABLE PLAN LEGEND**
- EXISTING: 8" (200mm) TRAFFIC SIGNAL SECTION, 12" (300mm) TRAFFIC SIGNAL SECTION, 12" (300mm) PEDESTRIAN SIGNAL SECTION, CONTROLLER CABINET, SERVICE INSTALLATION, TELEPHONE CONNECTION, VEHICLE DETECTOR, INDUCTION LOOP, MAGNETIC DETECTOR, EMERGENCY VEHICLE LIGHT DETECTOR, CONFIRMATION BEACON, PUSHBUTTON DETECTOR, DENOTES NUMBER OF CONDUCTORS, ALL CABLE NO. 14 EXCEPT AS INDICATED, ALL LOOP DETECTOR CABLE TO BE SHIELDED, GROUND CABLE IN CONDUIT NO. 6 SOLID COPPER (GREEN), FIBER OPTIC CABLE IN CONDUIT NO. 62.5/125 MM12F SM12F, SIGNAL FACE WITH BACKPLATE, "P" INDICATES PROGRAMMED HEAD, RAILROAD CONTROL CABINET, ILLUMINATED SIGN "NO LEFT TURN", ILLUMINATED SIGN "NO RIGHT TURN", GROUND ROD AT HANDHOLE (H), DOUBLE HANDHOLE (H), OR CONTROLLER (C), GROUND ROD AT POST (P) OR MAST ARM POLE (MA), GROUND ROD AT ELECTRIC SERVICE INSTALLATION, MICROWAVE VEHICLE SENSOR, UNINTERRUPTABLE POWER SUPPLY

REVISIONS

NAME	DATE

ILLINOIS DEPARTMENT OF TRANSPORTATION
CABLE PLAN, PHASE DESIGNATION DIAGRAM, EMERGENCY VEHICLE PREEMPTION, SCHEDULE OF QUANTITIES
 US RTE. 30 AT WOLF ROAD
 SCALE: 1" = NTS
 DATE: 03/21/2008
 DRAWN BY: ZH
 DESIGNED BY: BAE
 CHECKED BY: GB

