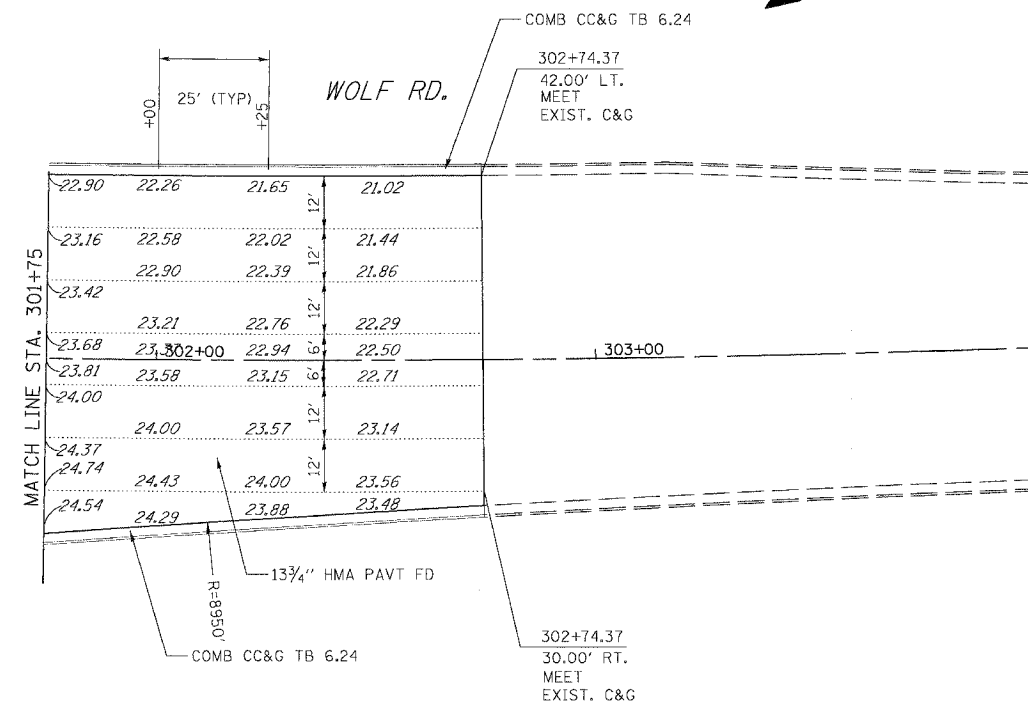
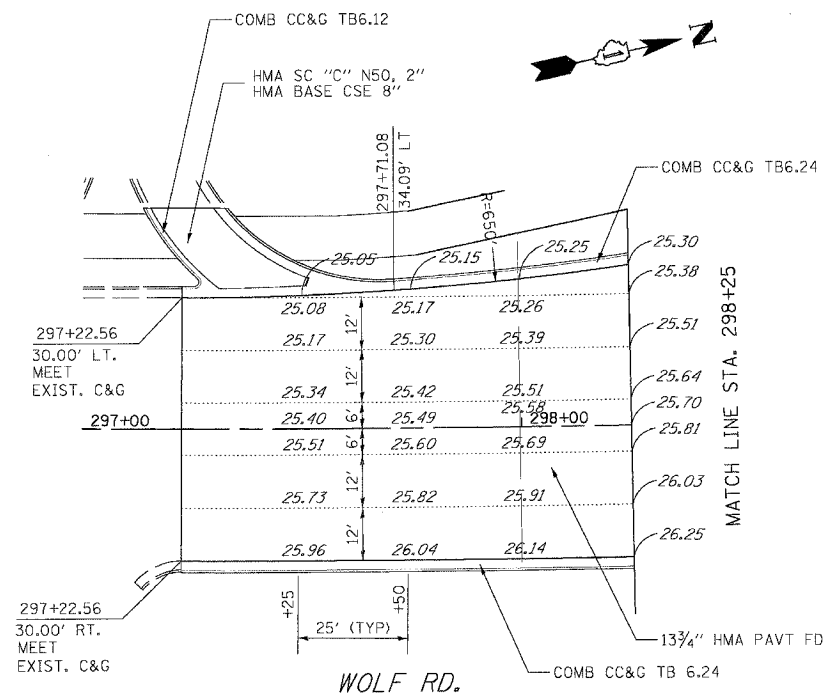
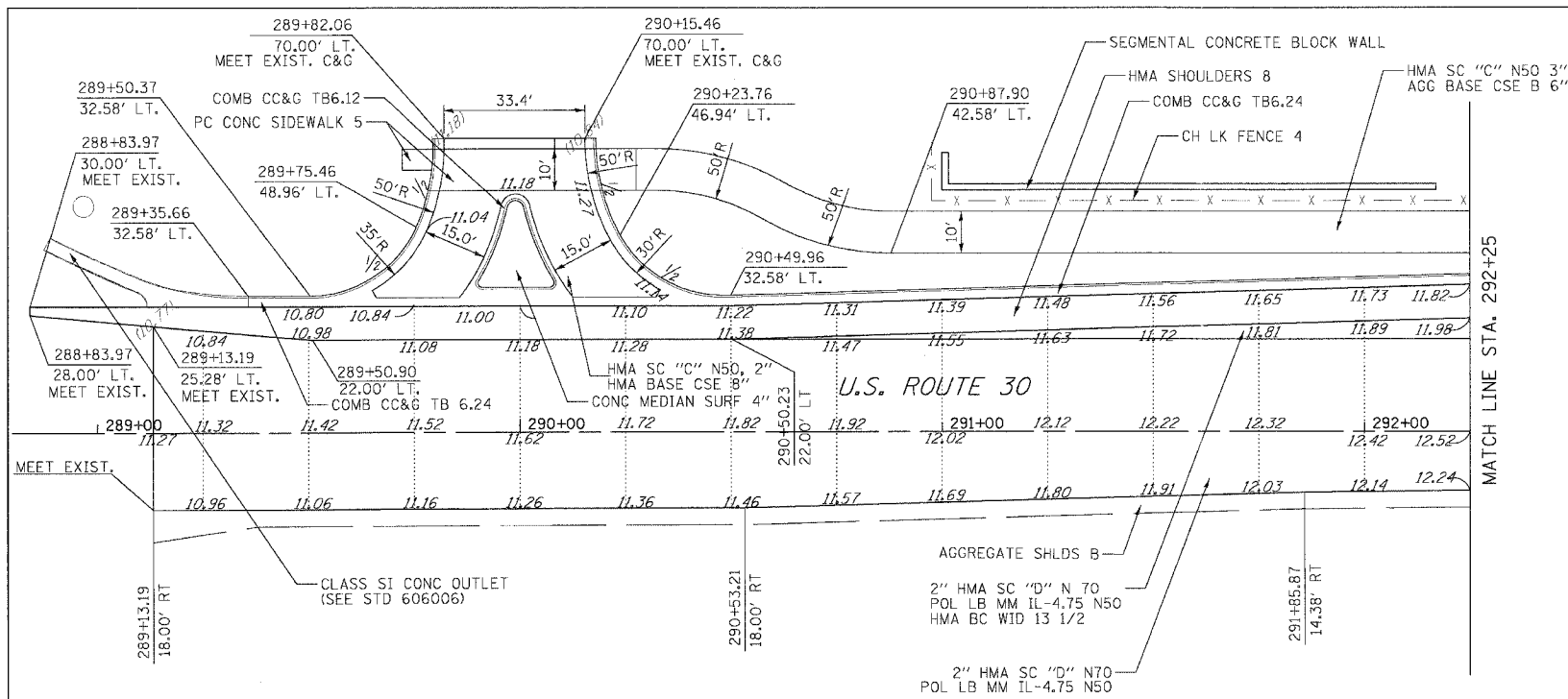


F.A.P. RTE.	SECTION	COUNTY	TOTAL SHEETS	SHEET NO.
353	(12&13)	WILL	199	73
STA.	TO STA.			
FED. ROAD DIST. NO.	ILLINOIS	FED. AID PROJECT		



REVISIONS		ILLINOIS DEPARTMENT OF TRANSPORTATION
NAME	DATE	
		INTERSECTION DETAILS U.S. RTE. 30 (LINCOLN HIGHWAY) & WOLF ROAD

SCALE : 1" = 20'  
DATE : 03/21/2008

DRAWN BY :  
CHECKED BY :

NOTE: ADD 700.00 FT. TO ELEVATIONS SHOWN.