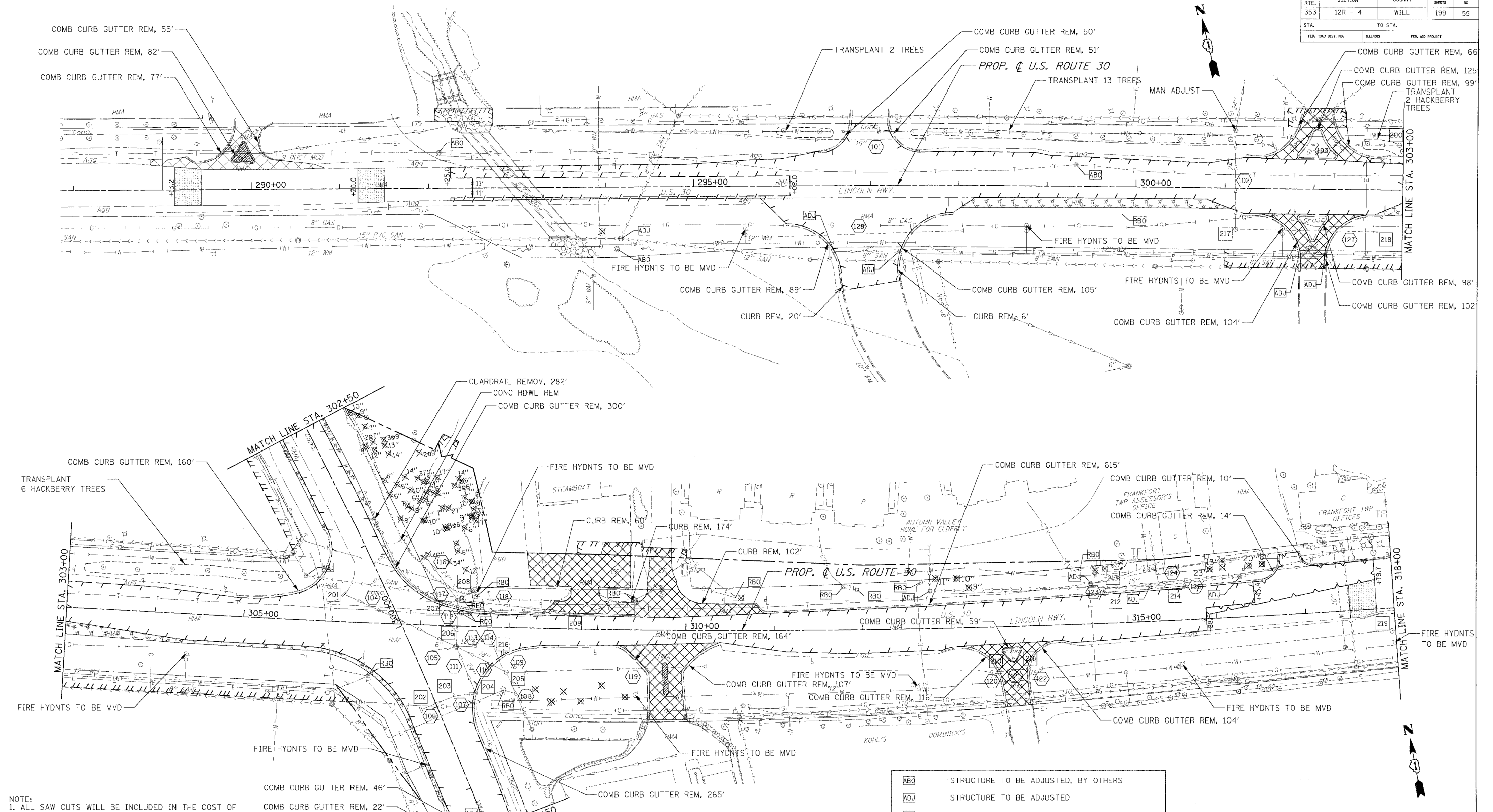


P.A.P. NO.	SECTION	COUNTY	TOTAL SHEETS	SHEET NO.
353	12R - 4	WILL	199	55
STA.	TO STA.			
FED. ROAD DIST. NO.	ILLINOIS	FED. AID PROJECT		



NOTE:
 1. ALL SAW CUTS WILL BE INCLUDED IN THE COST OF REMOVAL ITEMS.
 2. ONLY TREES WITH A DIAMETR OF 6" OR GREATER AT THE TIME OF THE TREE SURVEY WERE IDENTIFIED.
 3. THE CONTRACTOR SHALL CONTACT STEVE LIPKIE IN THE BUREAU OF MAINTENANCE AT (847) 705-4171 AT LEAST 48 HOURS IN ADVANCE OF TRANSPORTING WORK TO ASSIST WITH LAYOUT IN NEW LOCATIONS.
 4. SEE SECOND PAGE OF REMOVAL PLANS FOR PIPE AND STRUCTURE REMOVAL INFORMATION.

REMOVAL LEGEND	
	PAVEMENT REMOVAL
	DRIVEWAY PAVEMENT REMOVAL
	MEDIAN SURFACE REMOVAL
	SIDEWALK REMOVAL
	HMA SURF REM VAR DP
	PAVED SHOULDER REMOVAL
	HMA SURF REM BUTT JT
	RELOCATED, BY OTHERS
	STRUCTURE TO BE ADJUSTED, BY OTHERS
	STRUCTURE TO BE ADJUSTED
	STRUCTURE TO BE RECONSTRUCTED, BY OTHERS
	STRUCTURE TO BE RECONSTRUCTED
	STORM SEWER/CULVERT REMOVAL
	STRUCTURE TO BE REMOVED
	TREE REMOVAL, DIAMETER
	TREE TRUNK PROTECTION
	TREE ROOT PRUNING (NO REMOVAL)

REVISIONS	
NAME	DATE

ILLINOIS DEPARTMENT OF TRANSPORTATION
REMOVAL PLANS
 U.S. RTE. 30 (LINCOLN HIGHWAY)
 STA. 288+00 TO STA. 318+00
 SCALE : 1" = 50'
 DATE : 03/21/2008
 DRAWN BY : BAE
 CHECKED BY : GB