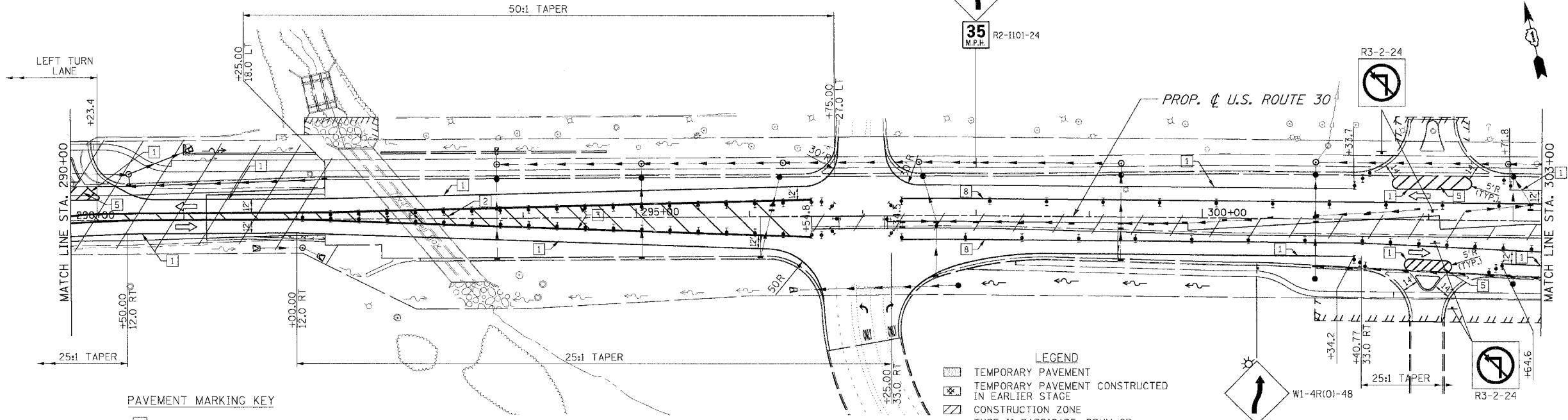
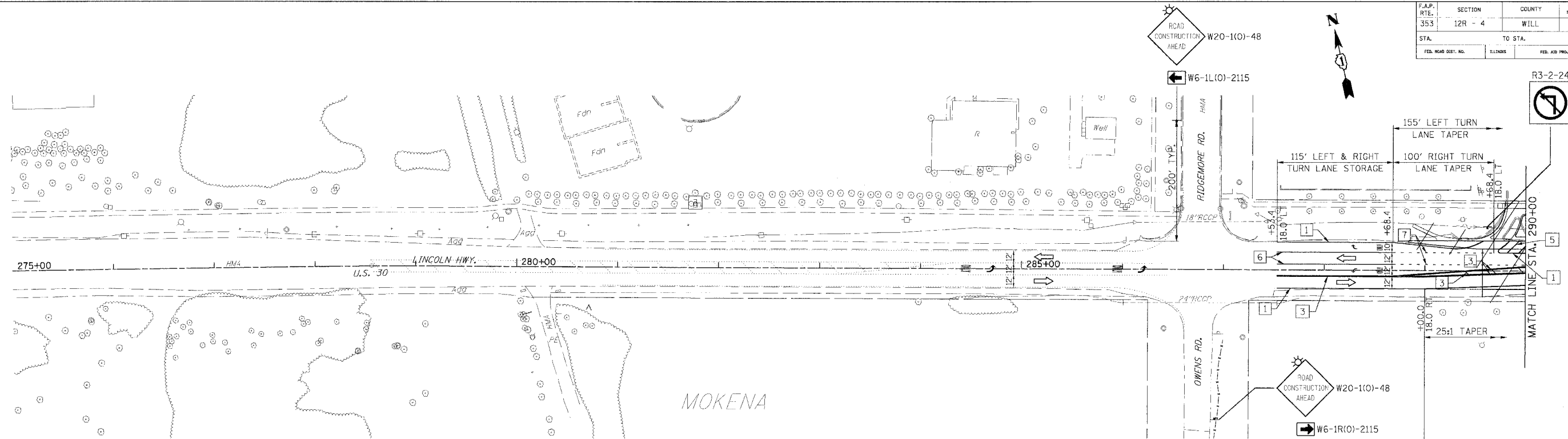


F.A.P. RT. NO.	SECTION	COUNTY	TOTAL SHEETS	SHEET NO.
353	12R - 4	WILL	199	53
STA.	TO STA.			
FED. ROAD DIST. NO.	ILLINOIS	FED. AID PROJECT		



PAVEMENT MARKING KEY

1	4" SOLID - WHITE
2	12" SOLID - YELLOW @ 20' C-C (5 MIN.)
3	4" SOLID - YELLOW @ 11" C-C
4	24" STOP BAR - WHITE
5	12" SOLID - WHITE
6	6" SOLID - WHITE
7	4" SOLID - WHITE (2' DASH - 6' SKIP)
8	4" SOLID - YELLOW
9	4" SOLID - WHITE (10' DASH - 30' SKIP)

- LEGEND**
- [Hatched Box] TEMPORARY PAVEMENT
 - [Cross-hatched Box] TEMPORARY PAVEMENT CONSTRUCTED IN EARLIER STAGE
 - [Diagonal Lines] CONSTRUCTION ZONE
 - [Barricade Symbol] TYPE II BARRICADE, DRUM OR VERTICAL BARRICADE WITH STEADY BURN MONODIRECTIONAL LIGHT
 - [Light Symbol] 50' C-C ON TANGENT
 - [Light Symbol] 25' C-C ON TAPER
 - [Light Symbol] 10' C-C ON CURVES
 - [Arrow] DIRECTION OF TRAFFIC FLOW
 - [Sign Symbol] SIGN
 - [Barricade Symbol] TYPE III BARRICADE WITH FLASHING LIGHTS
 - [XX] TEMPORARY STRUCTURE NUMBER
 - [XX] TEMPORARY PIPE NUMBER

REVISIONS

NAME	DATE

ILLINOIS DEPARTMENT OF TRANSPORTATION
MAINTENANCE OF TRAFFIC
 STAGE 3
 U.S. RTE. 30 (LINCOLN HIGHWAY)
 STA. 275+00 TO STA. 303+00
 SCALE : 1" = 50'
 DATE : 03/21/2008
 DRAWN BY : BAE
 CHECKED BY : GB