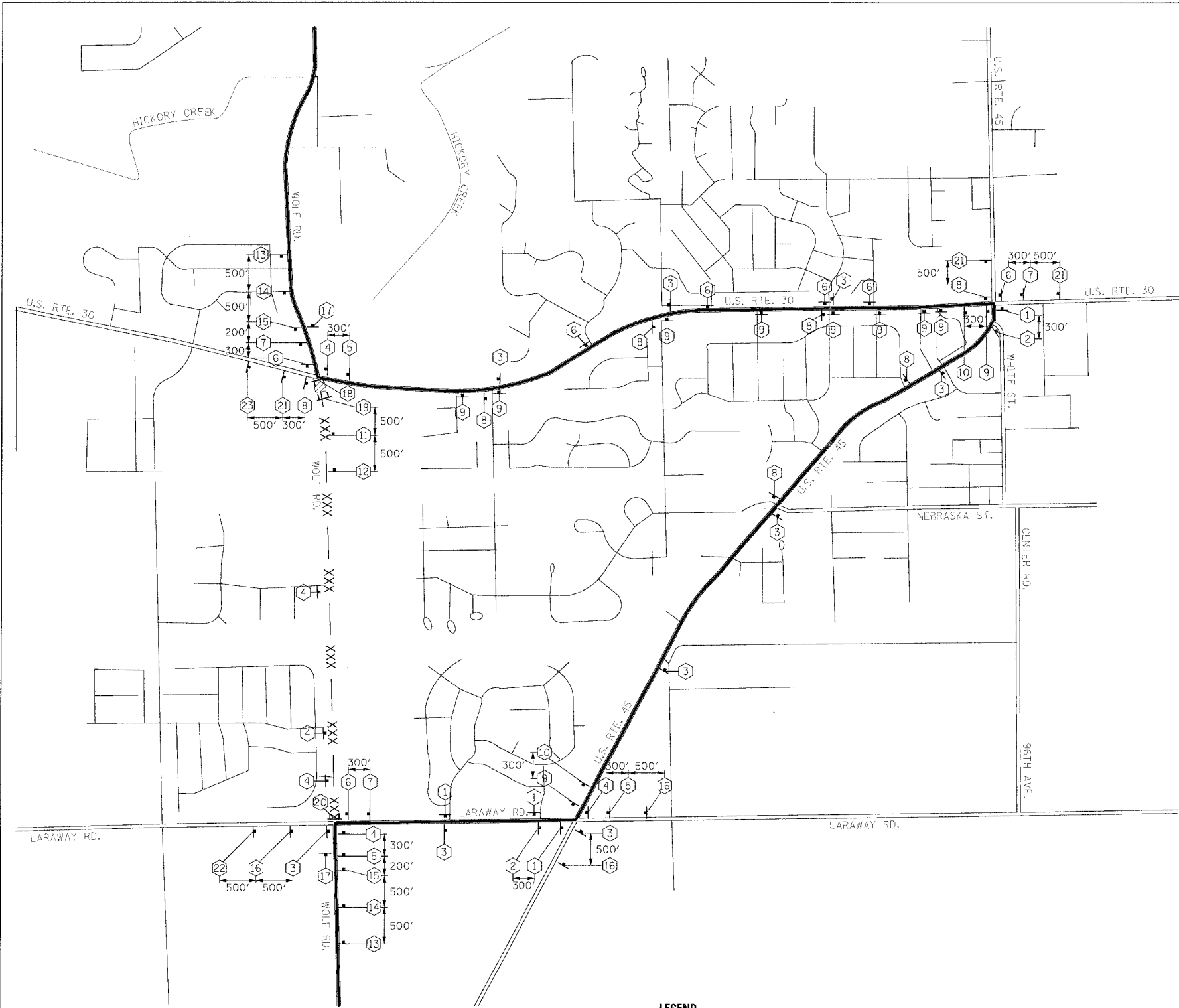


F.A.P. NO.	SECTION	COUNTY	TOTAL SHEETS	SHEET NO.
353	12R-4	WILL	199	33A
STA.	TO STA.			
FED. ROAD DIST. NO.	ILLINOIS	FED. AID PROJECT		

**SIGN LEGEND**

<p>1 <b>DETOUR NORTH</b> M4-8-2412  <b>WOLF ROAD</b> M3-1-2412  <b>←</b> SEE DETAIL M6-1L-2115</p>	<p>10 <b>DETOUR SOUTH</b> M4-8-2412  <b>WOLF ROAD</b> M3-3-2412  <b>↘</b> SEE DETAIL M5-1R-2115</p>	<p>17 <b>END DETOUR</b> M4-8A-2418</p>
<p>2 <b>DETOUR NORTH</b> M4-8-2412  <b>WOLF ROAD</b> M3-1-2412  <b>↙</b> SEE DETAIL M5-1L-2115</p>	<p>11 <b>ROAD CLOSED 500 FT</b> W20-3-4848</p>	<p>18 <b>ROAD CLOSED TO THRU TRAFFIC</b> R11-4-6030  <b>←</b> <b>DETOUR</b> M4-10L-4818                  MIN. 5 EACH                  TYPE III BARRICADE</p>
<p>3 <b>DETOUR NORTH</b> M4-8-2412  <b>WOLF ROAD</b> M3-1-2412  <b>↑</b> SEE DETAIL M6-3-2115</p>	<p>12 <b>ROAD CLOSED 1000 FT</b> W20-3-4848</p>	<p>19 <b>ROAD CLOSED</b> R11-2-4830                  MIN. 5 EACH                  TYPE III BARRICADE</p>
<p>4 <b>DETOUR NORTH</b> M4-8-2412  <b>WOLF ROAD</b> M3-1-2412  <b>→</b> SEE DETAIL M6-1R-2115</p>	<p>13 <b>ROAD CLOSED AHEAD</b> W20-3-4848</p>	<p>20 <b>ROAD CLOSED TO THRU TRAFFIC</b> R11-4-6030  <b>→</b> <b>DETOUR</b> M4-10R-4818                  MIN. 5 EACH                  TYPE III BARRICADE</p>
<p>5 <b>DETOUR NORTH</b> M4-8-2412  <b>WOLF ROAD</b> M3-1-2412  <b>↘</b> SEE DETAIL M5-1R-2115</p>	<p>14 <b>DETOUR AHEAD</b> W20-2-4848</p>	
<p>6 <b>DETOUR SOUTH</b> M4-8-2412  <b>WOLF ROAD</b> M3-3-2412  <b>←</b> SEE DETAIL M6-1L-2115</p>	<p>15 <b>ROAD CLOSED 500 FT</b> W20-3-4848</p>	<p>21 <b>DETOUR AHEAD</b> W20-2-4848  <b>NORTH WOLF RD</b> M3-1-2412 D3-4212 (BLACK ON ORANGE)  <b>SOUTH WOLF RD</b> M3-3-2412 D3-4212 (BLACK ON ORANGE)</p>
<p>7 <b>DETOUR SOUTH</b> M4-8-2412  <b>WOLF ROAD</b> M3-3-2412  <b>↙</b> SEE DETAIL M5-1L-2115</p>	<p>16 <b>DETOUR AHEAD</b> W20-2-4848</p>	
<p>8 <b>DETOUR SOUTH</b> M4-8-2412  <b>WOLF ROAD</b> M3-3-2412  <b>↑</b> SEE DETAIL M6-3-2115</p>	<p>22 <b>ROAD CLOSED AHEAD</b> W20-3-4848  <b>NORTH WOLF RD</b> M3-1-2412 D3-4212 (BLACK ON ORANGE)  <b>SOUTH WOLF RD</b> M3-3-2412 D3-4212 (BLACK ON ORANGE)</p>	
<p>9 <b>DETOUR SOUTH</b> M4-8-2412  <b>WOLF ROAD</b> M3-3-2412  <b>→</b> SEE DETAIL M6-1R-2115</p>		



**LEGEND**

	DETOUR ROUTE
	PARTIALLY CLOSED ROADWAY
	COMPLETELY CLOSED ROADWAY
	MAJOR STREET
	MINOR STREET
	TYPE A MONODIRECTIONAL FLASHING LIGHT
	TYPE III BARRICADE
	SIGN

**WOLF ROAD**  
 4" BLACK LETTERS ON WHITE REFLECTIVE BACKGROUND - 24" x 18"  
**SIGN DETAIL**

REVISIONS		ILLINOIS DEPARTMENT OF TRANSPORTATION
NAME	DATE	
		STAGE 1B DETOUR ROUTE
		U. S. RTE. 30 (LINCOLN HIGHWAY)
		SCALE : 1" = NTS
		DATE : 03/21/08
		DRAWN BY : BAE
		CHECKED BY : GB

