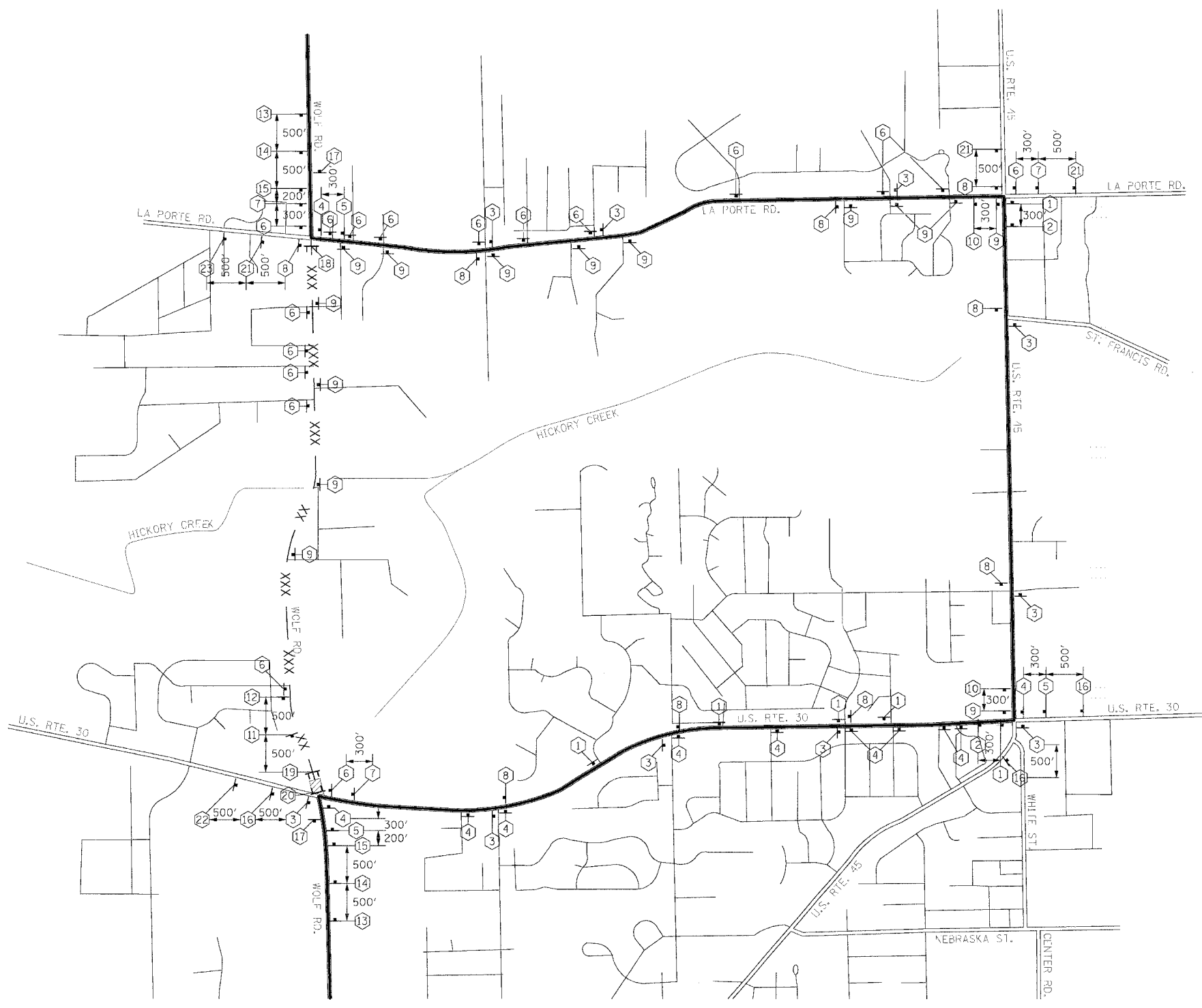


F.A.P. RTEL	SECTION	COUNTY	TOTAL SHEETS	SHEET NO
353	12R-4	WILL	199	33
STA.	TO STA.			
FED. ROAD DIST. NO.	SUBDIVISION	FED. AID PROJECT		



**SIGN LEGEND**

1	DETOUR NORTH WOLF ROAD SEE DETAIL M6-1L-2115	10	DETOUR SOUTH WOLF ROAD SEE DETAIL M5-1R-2115	17	END DETOUR M4-8A-2418
2	DETOUR NORTH WOLF ROAD SEE DETAIL M5-1L-2115	11	ROAD CLOSED 500 FT W20-3-4848	18	ROAD CLOSED TO THRU TRAFFIC DETOUR M4-10L-4818 MIN. 5 EACH TYPE III BARRICADE
3	DETOUR NORTH WOLF ROAD SEE DETAIL M6-3-2115	12	ROAD CLOSED 1000 FT W20-3-4848	19	ROAD CLOSED M4-10R-4818 MIN. 5 EACH TYPE III BARRICADE
4	DETOUR NORTH WOLF ROAD SEE DETAIL M6-1R-2115	13	ROAD CLOSED AHEAD W20-3-4848	20	ROAD CLOSED TO THRU TRAFFIC DETOUR M4-10R-4818 MIN. 5 EACH TYPE III BARRICADE
5	DETOUR NORTH WOLF ROAD SEE DETAIL M5-1R-2115	14	DETOUR AHEAD W20-2-4848	21	DETOUR AHEAD W20-2-4848
6	DETOUR SOUTH WOLF ROAD SEE DETAIL M6-1L-2115	15	ROAD CLOSED 500 FT W20-3-4848	22	ROAD CLOSED AHEAD W20-3-4848
7	DETOUR SOUTH WOLF ROAD SEE DETAIL M5-1L-2115	16	DETOUR AHEAD W20-2-4848	23	ROAD CLOSED AHEAD W20-3-4848
8	DETOUR SOUTH WOLF ROAD SEE DETAIL M6-3-2115				
9	DETOUR SOUTH WOLF ROAD SEE DETAIL M6-1R-2115				

WOLF ROAD  
4" BLACK LETTERS ON WHITE  
REFLECTIVE BACKGROUND - 24" x 18"  
SIGN DETAIL

- LEGEND**
- DETOUR ROUTE
  - XXX — PARTIALLY CLOSED ROADWAY
  - ▨ COMPLETELY CLOSED ROADWAY
  - MAJOR STREET
  - MINOR STREET
  - TYPE A MONODIRECTIONAL FLASHING LIGHT
  - ⊥ TYPE III BARRICADE
  - ⊥ SIGN

REVISIONS		ILLINOIS DEPARTMENT OF TRANSPORTATION
NAME	DATE	
		STAGE 1A DETOUR ROUTE U. S. RTE. 30 (LINCOLN HIGHWAY)  SCALE : 1" = NTS DATE : 03/21/08 DRAWN BY : BAE CHECKED BY : GB

