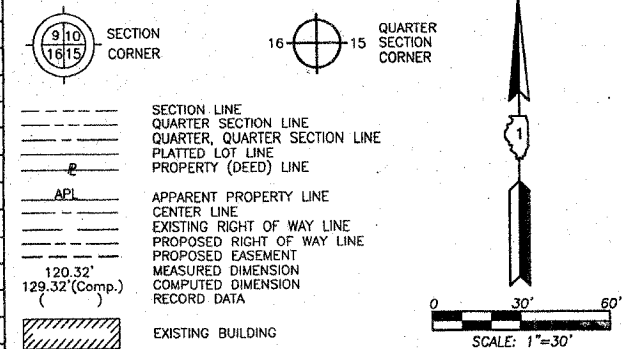


PART OF THE SE 1/4 OF SEC. 19, TWP. 35 N., R. 12 E. OF THE 3RD. P.M., IN WILL COUNTY, ILLINOIS.

LEGEND

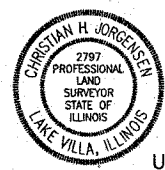


COORDINATE TABLE with columns: STATION, OFFSET, NORTH, EAST. Includes data for stations 302+50.00 through 307+66.59.

Schedule of Ties table with columns: Point Number, Tie to point, Tie Distance (feet). Includes data for points 1 through 4.

BEARINGS ARE REFERENCED TO THE ILLINOIS COORDINATE SYSTEM NAD83 (1997) East Zone at Found Geodetic Survey Control Monuments 'Will County GPS 824', P.I.D. AE2575 and 'Will County GPS 1308', P.I.D. AE2485.

THIS IS TO CERTIFY THAT WE, JORGENSEN & ASSOCIATES, INC., AN ILLINOIS PROFESSIONAL DESIGN FIRM, LAND SURVEYING CORPORATION, NUMBER 184-2771, HAVE SURVEYED THE PLAT OF HIGHWAYS SHOWN HEREON IN SECTION 19, TOWNSHIP 35N., RANGE 12E., OF THE THIRD PRINCIPAL MERIDIAN, WILL COUNTY, THAT THE SURVEY IS TRUE AND COMPLETE AS SHOWN TO THE BEST OF MY KNOWLEDGE AND BELIEF...



ILLINOIS PROFESSIONAL LAND SURVEYOR NO. 35-2292 LICENSE EXPIRATION DATE: NOVEMBER 30, 2008. THIS PROFESSIONAL SERVICE CONFORMS TO THE CURRENT ILLINOIS MINIMUM STANDARDS FOR A BOUNDARY SURVEY.

COORDINATE TABLE with columns: STATION, OFFSET, NORTH, EAST. Includes data for stations 300+02.77 through 302+35.35.

JORGENSEN & ASSOCIATES, INC. 120 PARK AVENUE LAKE VILLA, ILLINOIS 60046 (847) 356-3371

PLAT OF HIGHWAYS STATE OF ILLINOIS DEPARTMENT OF TRANSPORTATION F.A.P. 353 (U.S. ROUTE 30) SECTION (12 & 13)WRS-3 WILL COUNTY PROJECT JOB NO. R-91-016-01 STATION 299+00 TO STATION 308+00 (U.S. 30) STATION 299+00 TO STATION 306+00 (WOLF ROAD) SCALE: 1"=30' SHEET 5 OF 16

BUREAU OF LAND ACQUISITION 201 WEST CENTER COURT SCHAMBURG, ILLINOIS 60196 AS DOCUMENT NO.

MOKENA CORNERS Recorded June 8, 2002 as Document No. R2002-093640 Corrected by Certificate of Correction Recorded June 21, 2006 as Document No. R2006-102572

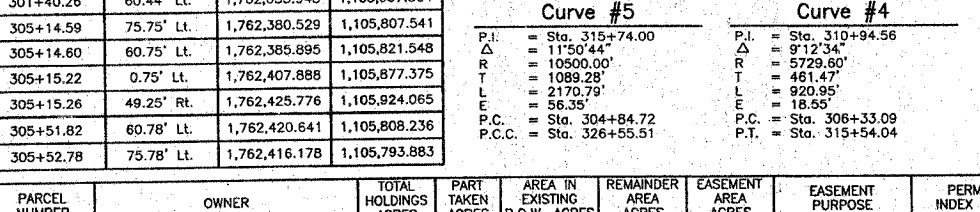
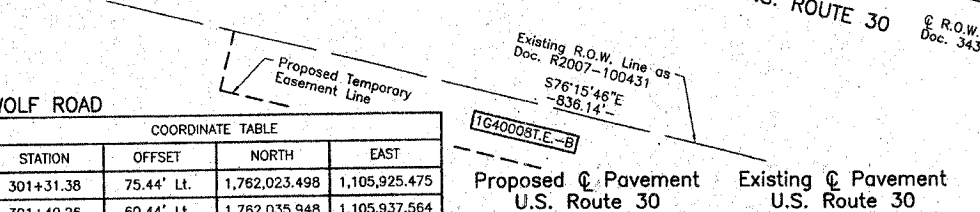
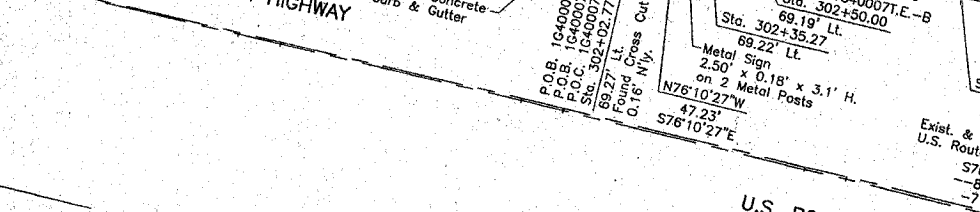
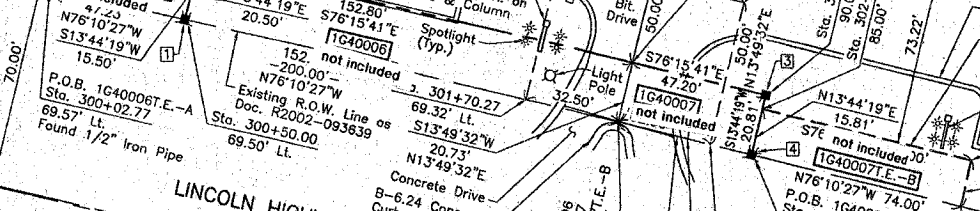
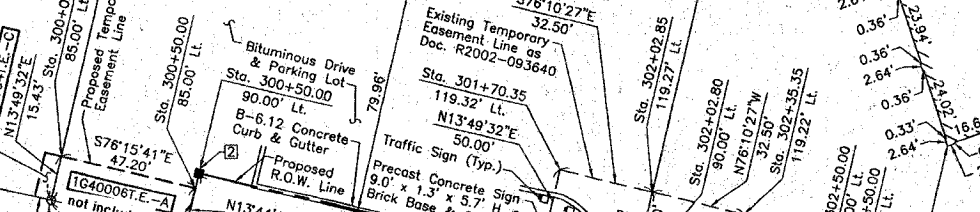
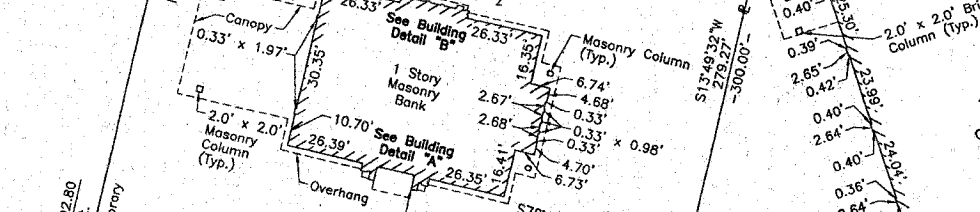
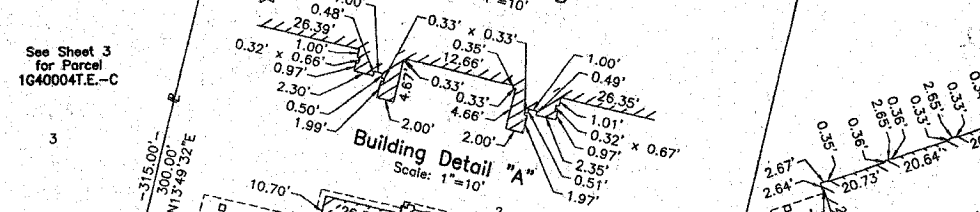
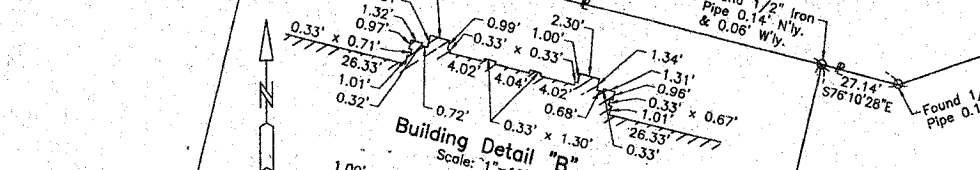
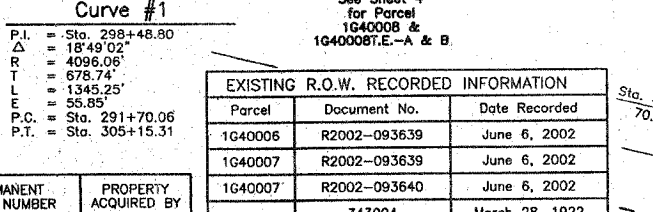
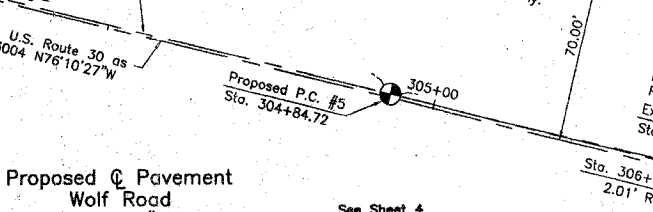
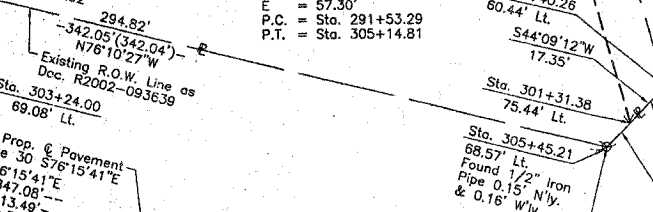
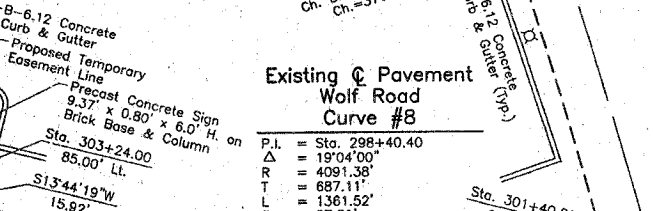
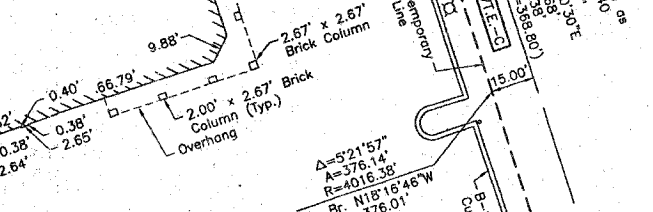
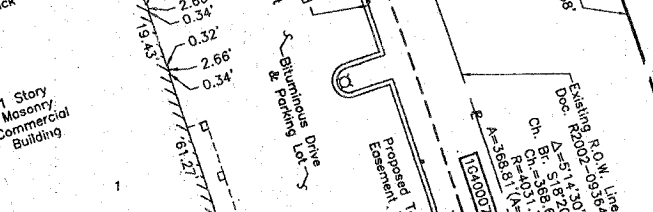
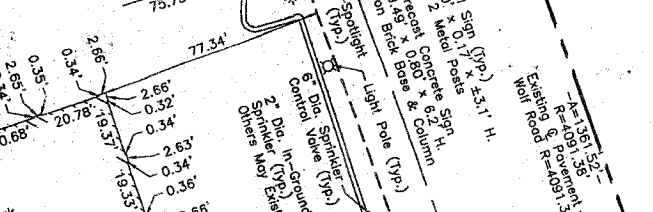
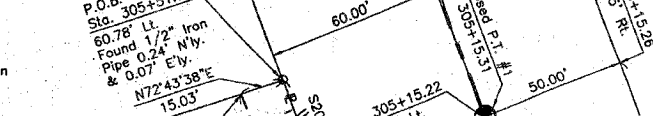


Table with columns: PARCEL NUMBER, OWNER, TOTAL HOLDINGS ACRES, PART TAKEN ACRES, AREA IN EXISTING R.O.W. ACRES, REMAINDER AREA ACRES, EASEMENT AREA ACRES, EASEMENT PURPOSE, PERMANENT INDEX NUMBER, PROPERTY ACQUIRED BY.



EXISTING R.O.W. RECORDED INFORMATION table with columns: Parcel, Document No., Date Recorded. Includes data for parcels 1G40006, 1G40007, 1G40008.

Table with columns: BY, DATE, MAKE, CHECKED, INKED, ROW, PLAY, NOTEBOOK, NO.

COORDINATE TABLE with columns: STATION, OFFSET, NORTH, EAST. Includes data for stations 301+31.38 through 305+52.78.

Proposed Pavement U.S. Route 30 Curve #5. P.I. = Sta. 315+74.00, Delta = 115'04", R = 10500.00', T = 1089.28', L = 2170.79', E = 56.35', P.C. = Sta. 304+84.72, P.T. = Sta. 326+55.51

Existing Pavement U.S. Route 30 Curve #4. P.I. = Sta. 310+94.56, Delta = 9'12'34", R = 5729.60', T = 461.47', L = 920.95', E = 18.55', P.C. = Sta. 306+33.09, P.T. = Sta. 315+54.04

Proposed Pavement Wolf Road Curve #1. P.I. = Sta. 298+48.80, Delta = 18'49'02", R = 4096.06', T = 678.74', L = 1345.25', E = 58.85', P.C. = Sta. 291+70.06, P.T. = Sta. 305+15.31

EXISTING R.O.W. RECORDED INFORMATION table with columns: Parcel, Document No., Date Recorded. Includes data for parcels 1G40006, 1G40007, 1G40008.

REVISION DATE January 30, 2007