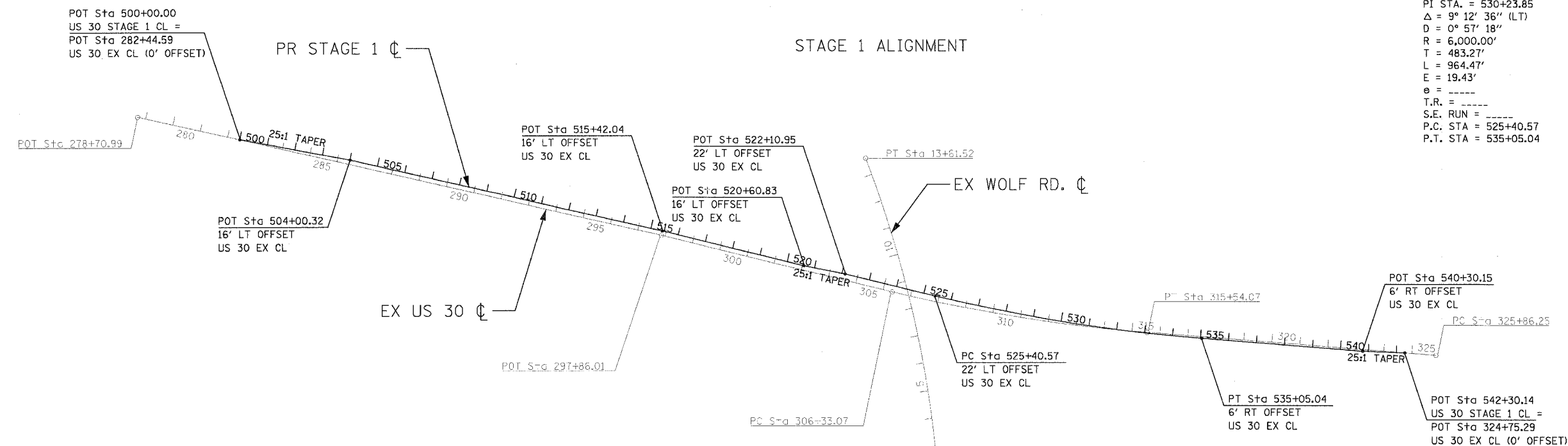


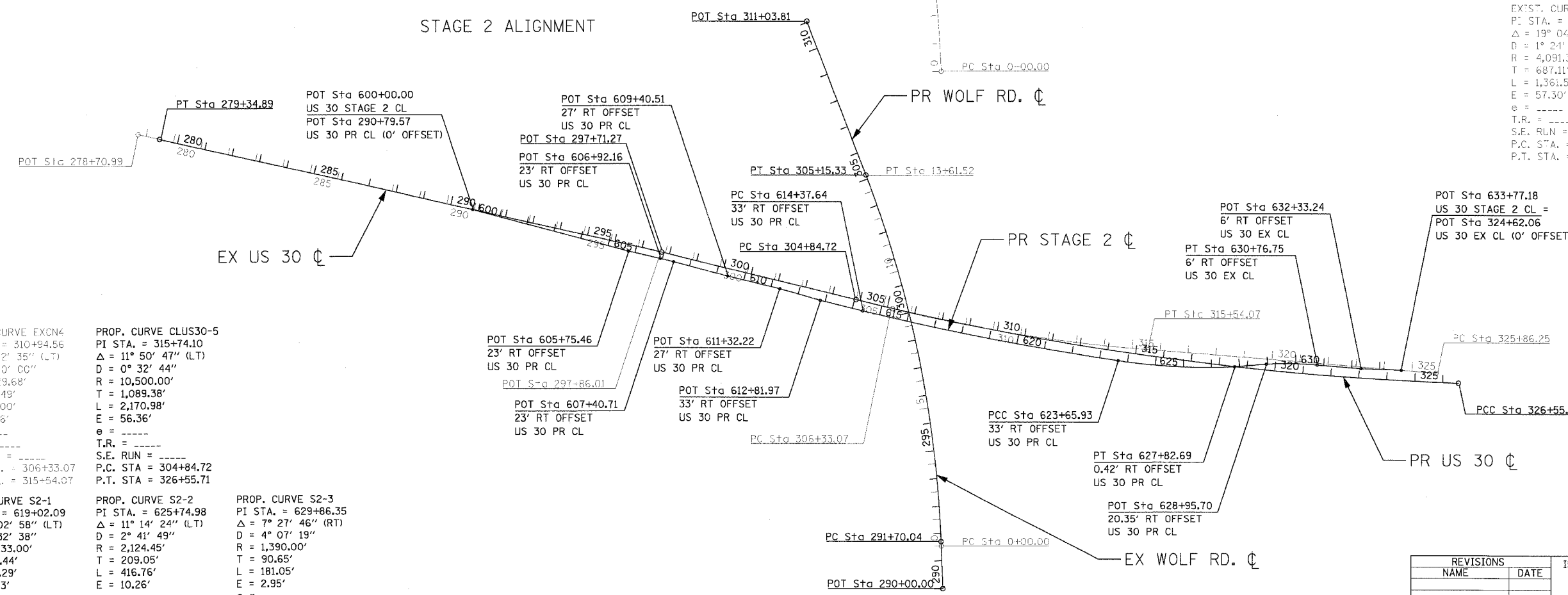
F.A.P. RTE.	SECTION	COUNTY	TOTAL SHEETS	SHEET NO.
353	12R - 4	WILL	199	23
STA.	TO STA.			
FED. ROAD DIST. NO.	ILLINOIS	FED. AID PROJECT		

PROP. CURVE S1-1  
 PI STA. = 530+23.85  
 $\Delta = 9^\circ 12' 36''$  (LT)  
 $D = 0^\circ 57' 18''$   
 $R = 6,000.00'$   
 $T = 483.27'$   
 $L = 964.47'$   
 $E = 19.43'$   
 $e = \text{-----}$   
 $T.R. = \text{-----}$   
 $S.E. RUN = \text{-----}$   
 $P.C. STA = 525+40.57$   
 $P.T. STA = 535+05.04$



EXIST. CURVE EXWOLF1  
 PI STA. = 6187.11  
 $\Delta = 19^\circ 04' 00''$  (LT)  
 $D = 1^\circ 24' 00''$   
 $R = 4,091.38'$   
 $T = 687.11'$   
 $L = 1,361.52'$   
 $E = 57.30'$   
 $e = \text{-----}$   
 $T.R. = \text{-----}$   
 $S.E. RUN = \text{-----}$   
 $P.C. STA = 0+00.00$   
 $P.T. STA = 13+61.52$

PROP. CURVE PWOLF1  
 PI STA. = 298+48.80  
 $\Delta = 18^\circ 49' 05''$  (LT)  
 $D = 1^\circ 23' 56''$   
 $R = 4,096.06'$   
 $T = 678.76'$   
 $L = 1,345.29'$   
 $E = 55.86'$   
 $e = \text{-----}$   
 $T.R. = \text{-----}$   
 $S.E. RUN = \text{-----}$   
 $P.C. STA = 291+70.04$   
 $P.T. STA = 305+15.33$



EXIST. CURVE EXCN4  
 PI STA. = 310+94.56  
 $\Delta = 9^\circ 12' 35''$  (LT)  
 $D = 1^\circ 00' 00''$   
 $R = 5,729.68'$   
 $T = 461.49'$   
 $L = 921.00'$   
 $E = 18.56'$   
 $e = \text{-----}$   
 $T.R. = \text{-----}$   
 $S.E. RUN = \text{-----}$   
 $P.C. STA = 306+33.07$   
 $P.T. STA = 315+54.07$

PROP. CURVE CLUS30-5  
 PI STA. = 315+74.10  
 $\Delta = 11^\circ 50' 47''$  (LT)  
 $D = 0^\circ 32' 44''$   
 $R = 10,500.00'$   
 $T = 1,089.38'$   
 $L = 2,170.98'$   
 $E = 56.36'$   
 $e = \text{-----}$   
 $T.R. = \text{-----}$   
 $S.E. RUN = \text{-----}$   
 $P.C. STA = 304+84.72$   
 $P.T. STA = 326+55.71$

PROP. CURVE S2-1  
 PI STA. = 619+02.09  
 $\Delta = 5^\circ 02' 58''$  (LT)  
 $D = 0^\circ 32' 38''$   
 $R = 10,533.00'$   
 $T = 464.44'$   
 $L = 928.29'$   
 $E = 10.23'$   
 $e = \text{-----}$   
 $T.R. = \text{-----}$   
 $S.E. RUN = \text{-----}$   
 $P.C. STA = 614+37.64$   
 $P.T. STA = 623+65.93$

PROP. CURVE S2-2  
 PI STA. = 625+74.98  
 $\Delta = 11^\circ 14' 24''$  (LT)  
 $D = 2^\circ 41' 49''$   
 $R = 2,124.45'$   
 $T = 209.05'$   
 $L = 416.76'$   
 $E = 10.26'$   
 $e = \text{-----}$   
 $T.R. = \text{-----}$   
 $S.E. RUN = \text{-----}$   
 $P.C. STA = 623+65.93$   
 $P.T. STA = 627+82.69$

PROP. CURVE S2-3  
 PI STA. = 629+86.35  
 $\Delta = 7^\circ 27' 46''$  (RT)  
 $D = 4^\circ 07' 19''$   
 $R = 1,390.00'$   
 $T = 90.65'$   
 $L = 181.05'$   
 $E = 2.95'$   
 $e = \text{-----}$   
 $T.R. = \text{-----}$   
 $S.E. RUN = \text{-----}$   
 $P.C. STA = 628+95.70$   
 $P.T. STA = 630+76.75$

REVISIONS	
NAME	DATE

ILLINOIS DEPARTMENT OF TRANSPORTATION  
**STAGING ALIGNMENTS**  
 U.S. RTE. 30 (LINCOLN HIGHWAY)

SCALE : 1" = 200'  
 DATE : 03/21/2008

DRAWN BY : BAE  
 CHECKED BY :

