

F.A.P. RTE.	SECTION	COUNTY	TOTAL SHEETS	SHEET NO.
353	12R - 4	WILL	199 + 2 201	1

FOR INDEX OF SHEETS, SEE SHEET NO. 2

PROJECT IS LOCATED IN:
FRANKFORT TOWNSHIP
VILLAGE OF MOKENA
VILLAGE OF FRANKFORT

STATE OF ILLINOIS
DEPARTMENT OF TRANSPORTATION
DIVISION OF HIGHWAYS
**PROPOSED
HIGHWAY PLANS**

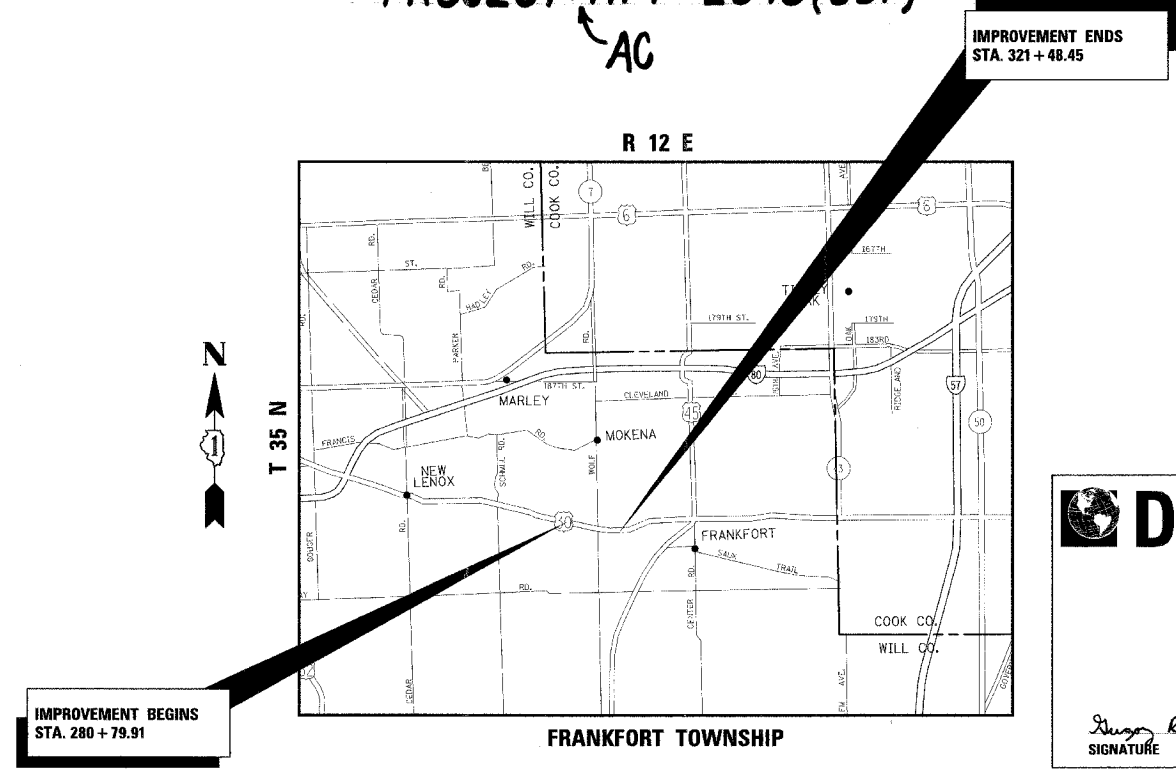
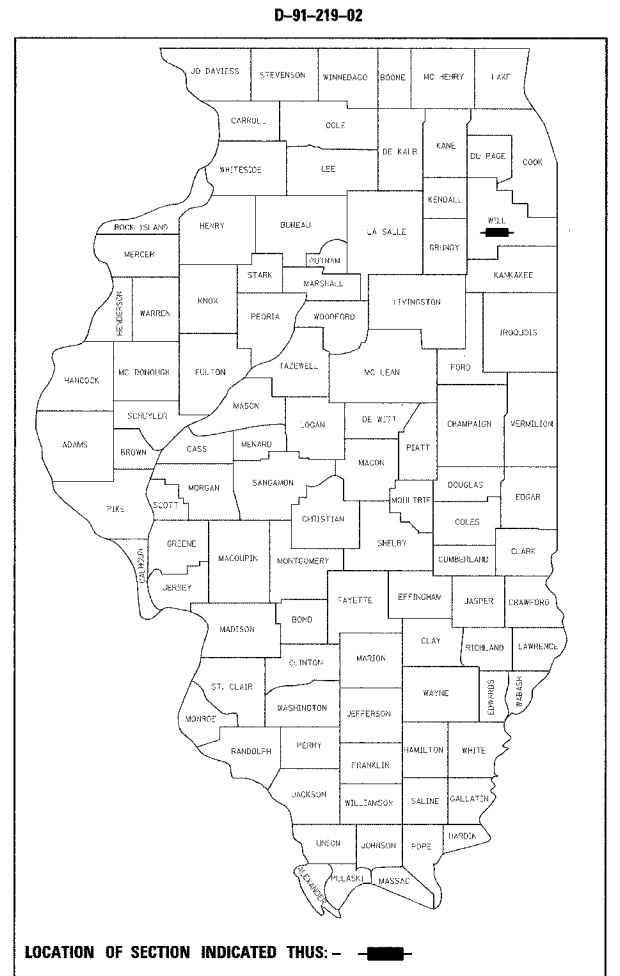
DESIGN DESIGNATION

2,340 (20) OTHER PRICIPAL ARTERIAL 4.27 (FD-20)

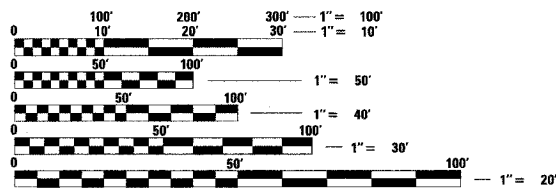
TRAFFIC DATA

	ADT (1998)	DESIGN SPEED	POSTED SPEED
U. S. RTE 30			
GARFIELD TO WOLF	16,000	50	45
WOLF TO HACKBERRY	16,000	50	45
WOLF ROAD (S LEG)	6,500	50	45
WOLF ROAD (N LEG)	10,500	50	45

**F.A.P. 353 / U.S. 30 (LINCOLN HWY.) & WOLF RD.
INTERSECTION RECONSTRUCTION**
SECTION: 12R - 4
WILL COUNTY
C-91-189-07
PROJECT: HPP-2040(001)



GROSS LENGTH PROJECT = 4068.5 FEET = 0.771 MILES
NET LENGTH PROJECT = 4068.5 FEET = 0.771 MILES



FULL SIZE PLANS HAVE BEEN PREPARED USING STANDARD ENGINEERING SCALES. REDUCED SIZED PLANS WILL NOT CONFORM TO STANDARD SCALES. IN MAKING MEASUREMENTS ON REDUCED PLANS, THE ABOVE SCALES MAY BE USED.

J.U.L.I.E.
JOINT UTILITY LOCATION INFORMATION FOR EXCAVATION
1-800-892-0123

ROADWAY DESIGNED BY

DLZ 85 W. ALGONQUIN, SUITE 220
ARLINGTON HEIGHTS, IL 60005
(847) 640-0840

Gregory R. Brumm
PROFES. REGISTERED ENGINEER
SEAL
11/30/2009 EXPIRES

Signature: *Gregory R. Brumm*
SIGNATURE

STATE OF ILLINOIS
DEPARTMENT OF TRANSPORTATION
DIVISION OF HIGHWAYS

SUBMITTED MARCH 14, 2008

Diana M. O'Keefe
DEPUTY DIRECTOR OF HIGHWAYS, REGION ENGINEER

June 27, 2008
Eric E. Harn
INTERIM ENGINEER OF DESIGN AND ENVIRONMENT

June 27, 2008
Christie M. Reed
DIRECTOR OF HIGHWAYS, CHIEF ENGINEER

**PRINTED BY THE AUTHORITY
OF THE STATE OF ILLINOIS**

CONSULTANT SERVICES SECTION DISTRICT ONE - DESIGN / RAJENDRA SHAH (847) 705 - 4555

CONTRACT NO. 60C25