

STATE OF ILLINOIS  
DEPARTMENT OF TRANSPORTATION

F.A. RTE.	SECTION	COUNTY	TOTAL SHEETS	SHEET NO.
*	D9 PATCH 2021-3	*	8	1
ILLINOIS CONTRACT NO. 78808				
* FAI 57 / FAP 14				
* * ALEXANDER / PULASKI				

FOR INDEX OF SHEETS, SEE SHEET NO. 3  
FOR SUMMARY OF QUANTITIES, SEE SHEET NO. 4

TRAFFIC DATA

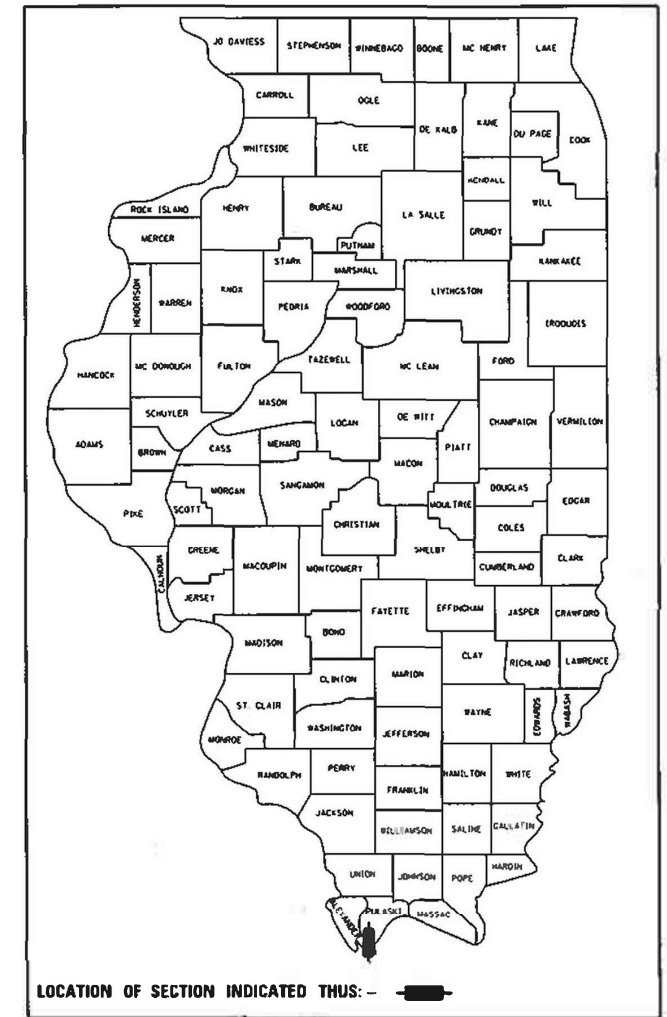
2019 ADT = 11,600 WITH 51.3% TRUCKS

# PROPOSED HIGHWAY PLANS

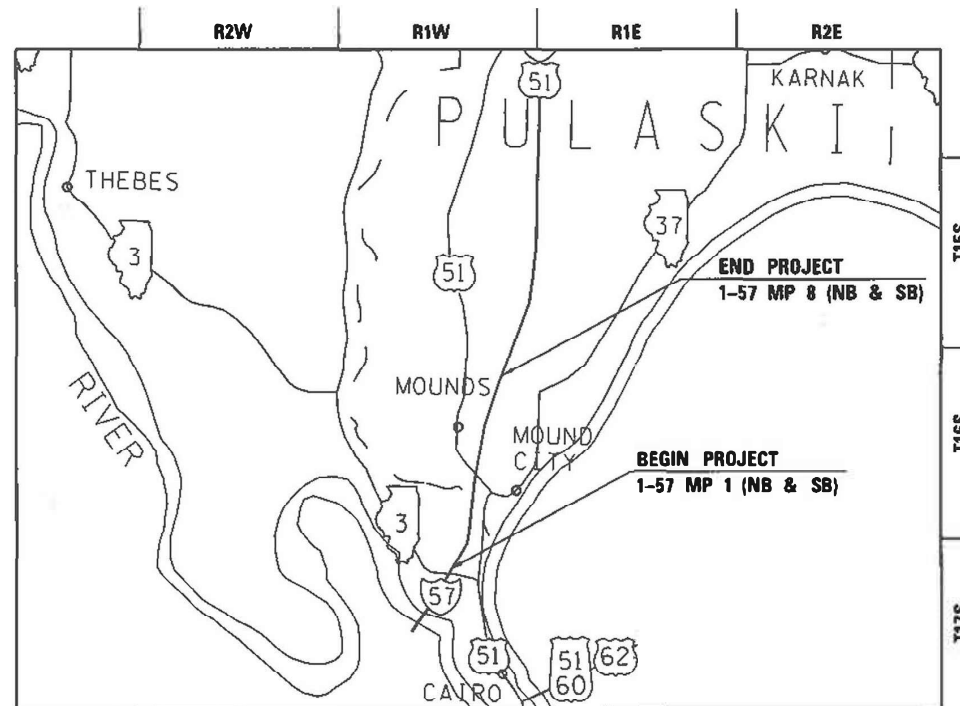
FAI 57 (I-57)  
D9-PATCH 2021-3  
PATCHING  
ALEXANDER / PULASKI COUNTY

C-99-081-20

D-99-062-20



TOWNSHIP: CACHE NO. 1, MOUND CITY, MOUNDS, VILLA RIDGE



GROSS LENGTH = 8 MILES  
NET LENGTH = 8 MILES

J.U.L.I.E.  
JOINT UTILITY LOCATION INFORMATION FOR EXCAVATION  
1-800-892-0123  
OR 811

PROJECT ENGINEER SUSAN POE  
PROJECT DESIGNER PATRICK NAAS

CONTRACT NO. 78808

STATE OF ILLINOIS  
DEPARTMENT OF TRANSPORTATION

SUBMITTED 04-23-2020  
[Signature]  
REGION FIVE ENGINEER

June 26, 2020 [Signature]  
ENGINEER OF DESIGN AND ENVIRONMENT

June 26, 2020 [Signature]  
DIRECTOR OF HIGHWAYS PROJECT IMPLEMENTATION 13

PRINTED BY THE AUTHORITY  
OF THE STATE OF ILLINOIS

Prepared By: Charles Stevi  
 DISTRICT STUDIES & PLANS ENGINEER

Examined By: \_\_\_\_\_  
 DISTRICT LAND ACQUISITION ENGINEER

Examined By: Carla Miller  
 DISTRICT PROGRAM DEVELOPMENT ENGINEER

Examined By: Kevin Kelly  
 DISTRICT OPERATIONS ENGINEER

Examined By: KRQ  
 DISTRICT PROJECT IMPLEMENTATION ENGINEER

Examined By: Dave J. Reusch  
 DISTRICT CONSTRUCTION ENGINEER

Examined By: [Signature]  
 DISTRICT MATERIALS ENGINEER

\* FAI 57 / FAP 14  
 \*\* ALEXANDER / PULASKI

MODEL: S00  
 FILE NAME: mp:\datacom\gsr\mapa\for-PWIDOT\Documents\JDOT\_Offices\District\_9\p\gk\288808\CAD\Drawings\288808\_COVER.dgn

USER NAME = naasop	DESIGNED -	REVISED -
	DRAWN -	REVISED -
PLOT SCALE = 100.0000 / in	CHECKED -	REVISED -
PLOT DATE = 4/16/2020	DATE -	REVISED -

**STATE OF ILLINOIS  
 DEPARTMENT OF TRANSPORTATION**

**SIGNATURE SHEET**

SCALE: SHEET OF SHEETS STA. TO STA.

F.A. R.T.E.	SECTION	COUNTY	TOTAL SHEETS	SHEET NO.
*	D9 Patch 2021-3	**		2
			CONTRACT NO. 78808	
ILLINOIS FED. AID PROJECT				

## LIST OF STANDARDS

000001-07 STANDARD SYMBOLS ABBREVIATIONS & PATTERNS  
 001001-02 AREAS OF REINF BARS  
 001006 DECIMAL OF INCH & FOOT  
 421101-10 24FT CRCPVMT - W WIDE FLANGE BEAM TERM JT  
 442001-04 CLASS A PATCHES  
 442101-09 CLASS B PATCHES  
 701101-05 OFF RD OP-MULTI LN-LESS THAN 15FT TO EOP  
 701106-02 OFF RD OP-MULTI LN-MORE THAN 15FT AWAY  
 701400-09 APPRCH TO LN CLOSURE-FRWAY EXPWAY  
 701406-12 LN CLOSURE FRWAY EXPWAY-DAY OP ONLY  
 701411-09\_LNCLOSUREMULTILN-ENTROREXITRAMP45MPHORMORE  
 701456-05 PARTIAL EXIT RAMP CLOSURE FREEWAY EXPRESSWAY  
 701901-08 TRAF CNTRL DEVICES

## INDEX OF SHEETS

- 1 COVER SHEET
- 2 SIGNATURES SHEET
- 3 LIST OF STANDARDS / INDEX OF SHEETS / GENERAL NOTES
- 4 SUMMARY OF QUANTITIES
- 5 TYPICAL SECTIONS
- 6 - 7 PATCHING SCHEDULES
- 8 DETAILS (TRAFFIC CONTROL AND PROTECTION STANDARD 701456)

## GENERAL NOTES

IF ANY STAMPED STATION FALLS WITHIN THE PATCH AREA, THE NEW PATCH SHALL BE RESTAMPED. THE STATION SYMBOL STAMPS USED SHALL BE FURNISHED BY THE CONTRACTOR. THEY SHALL BE 5 1/2" TALL OF A DESIGN APPROVED BY THE ENGINEER AND SHALL REMAIN THE PROPERTY OF THE CONTRACTOR.

COMMITMENTS:  
 NONE

MODEL: SDO  
 FILE: \\naasdp\pub\lansroom\data\links\gov\PI\DOT\Documents\DOT\_Offices\DOT\9\Projects\78808\CAADData\CAD\Sheets\0778808\_COVER.dgn

\* FAI 57 / FAP 14  
 \*\* ALEXANDER / PULASKI

	USER NAME = naasdp DESIGNED - DRAWN - PLOT SCALE = 100.0000 ' / in. CHECKED - PLOT DATE = 4/29/2020 DATE -	REVISED - REVISED - REVISED - REVISED -	<b>STATE OF ILLINOIS                  DEPARTMENT OF TRANSPORTATION</b>	<b>LIST OF STANDARDS /INDEX OF SHEETS /GENERAL NOTES</b>	SCALE:      SHEET      OF      SHEETS      STA.      TO STA.	F.A. RTE. * *	SECTION D9 Patch 2021-3	COUNTY **	TOTAL SHEETS 8	SHEET NO. 3	CONTRACT NO. 78808 ILLINOIS FED. AID PROJECT
--	--	--	--	--	--	---------------------	----------------------------	--------------	-------------------	----------------	---

# SUMMARY OF QUANTITIES

100%  
STATE

COUNTY:	COUNTY:	ALEXANDER	PULASKI
ROUTE:	ROUTE:	I-57	I-57
FUNDING:	FUNDING:	D9 PATCH	D9 PATCH
LOCATION:	LOCATION:	RURAL	RURAL
		ROADWAY	ROADWAY
		0005	0005

CODE NUMBER	ITEM DESCRIPTION	UNIT	TOTAL QUANTITY	ALEXANDER	PULASKI
44200608	CLASS A PATCHES, TYPE I, 13 INCH	SQ YD	108	24	84
44200610	CLASS A PATCHES, TYPE II, 13 INCH	SQ YD	217	43	174
44200612	CLASS A PATCHES, TYPE III, 13 INCH	SQ YD	79	20	59
44200614	CLASS A PATCHES, TYPE IV, 13 INCH	SQ YD	287	80	207
44200970	CLASS B PATCHES, TYPE II, 10 INCH	SQ YD	608	608	
44201299	DOWEL BARS 1 1/2"	EACH	1,596	1,596	
44213000	PATCHING REINFORCEMENT	SQ YD	691	167	524
44213200	SAW CUTS	FOOT	7,114	4,314	2,800
44213204	TIE BARS 3/4"	EACH	168	30	138
67100100	MOBILIZATION	L SUM	1	0.5	0.5
70100420	TRAFFIC CONTROL AND PROTECTION, STANDARD 701411	EACH	1	0.5	0.5
70100700	TRAFFIC CONTROL AND PROTECTION, STANDARD 701406	L SUM	1	0.6	0.4
70100825	TRAFFIC CONTROL AND PROTECTION, STANDARD 701456	L SUM	1	1	
70107025	CHANGEABLE MESSAGE SIGN	CAL DA	56	42	14

MODEL: SDO  
FILE: \\nas101\pub\lanscom\dat\illinois\pww\DOT\Documents\DOT\_Offices\lansct\9\Projects\78808\CADD\Drawings\978808\_COVER.dgn

\* FAI 57 / FAP 14  
\* \* ALEXANDER / PULASKI

USER NAME = naasdp	DESIGNED -	REVISED -	
	DRAWN -	REVISED -	
PLOT SCALE = 100.0000' / in.	CHECKED -	REVISED -	
PLOT DATE = 5/1/2020	DATE -	REVISED -	

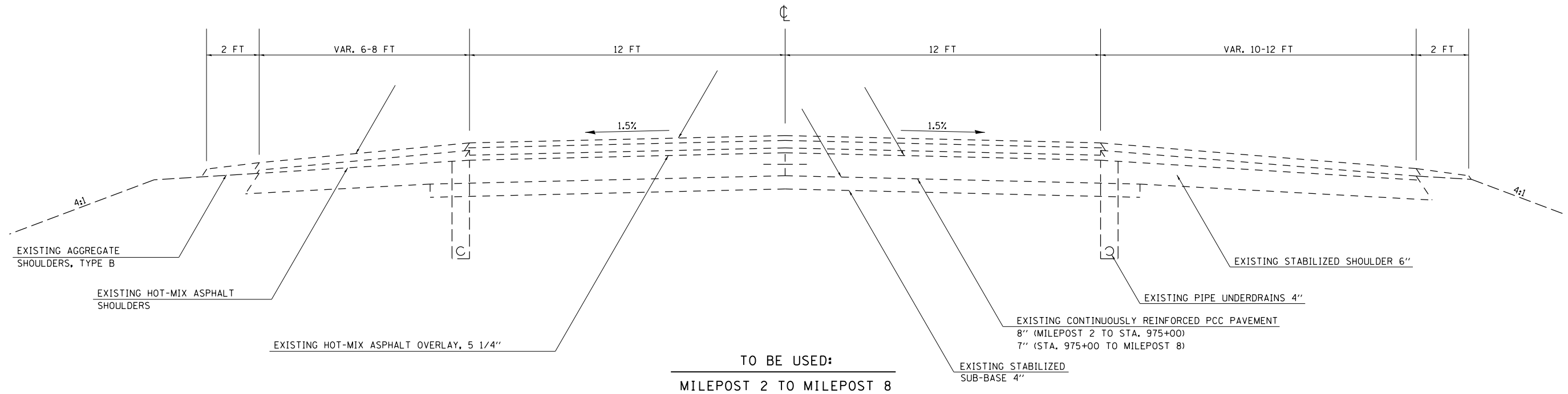
**STATE OF ILLINOIS  
DEPARTMENT OF TRANSPORTATION**

**SUMMARY OF QUANTITIES**

SCALE: SHEET OF SHEETS STA. TO STA.

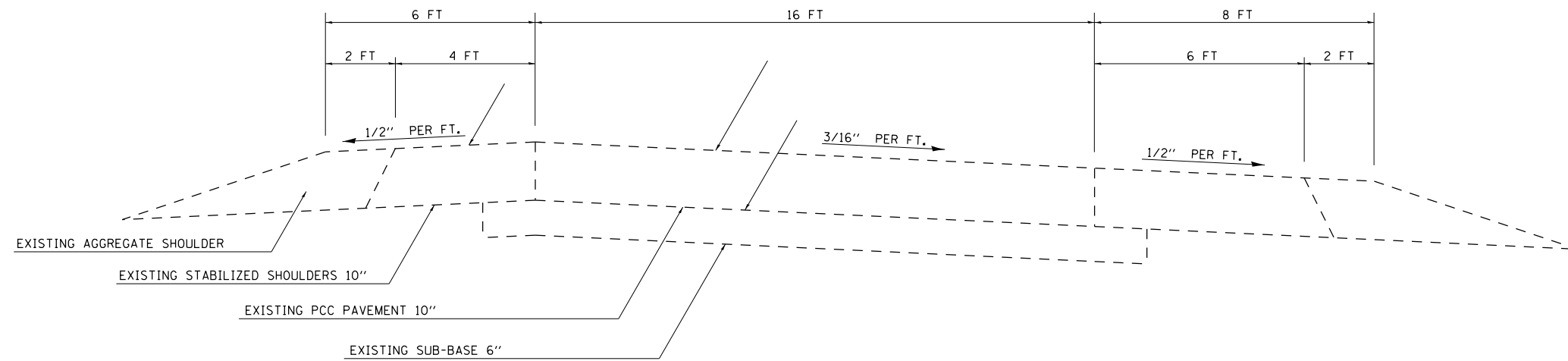
F.A. RTE.	SECTION	COUNTY	TOTAL SHEETS	SHEET NO.
*	D9 Patch 2021-3	* *	8	4
CONTRACT NO. 78808				
ILLINOIS FED. AID PROJECT				

**TYPICAL SECTION**  
 SB & NB LANES  
 F. A. I. RTE. 57  
 (LOOKING IN DIRECTION OF TRAVEL)



TO BE USED:  
 MILEPOST 2 TO MILEPOST 8

**TYPICAL SECTION**  
 SB & NB ENTRANCE/EXIT RAMPS  
 F. A. I. RTE. 57



TO BE USED:  
 I-57/IL3/US51 ENTRANCE AND EXIT RAMPS (MILEPOST 1)

MODEL COVER  
 FILE NAME: P:\pub\baronm.dwg  
 ILLINOIS STATE ROADWAY DESIGN CENTER  
 PROJECT: I-57/IL3/US51 ENTRANCE AND EXIT RAMPS (MILEPOST 1)  
 SHEET: 5 OF 8  
 DATE: 4/29/2020

\* FAI 57 / FAP 14  
 \*\* ALEXANDER / PULASKI

USER NAME = naasdp	DESIGNED -	REVISED -
	DRAWN -	REVISED -
PLOT SCALE = 2,000' / in.	CHECKED -	REVISED -
PLOT DATE = 4/29/2020	DATE -	REVISED -

**STATE OF ILLINOIS  
 DEPARTMENT OF TRANSPORTATION**

**TYPICAL SECTIONS**

SCALE: SHEET OF SHEETS STA. TO STA.

F.A. RTE.	SECTION	COUNTY	TOTAL SHEETS	SHEET NO.
*	D9 Patch 2021-3	**	8	5
CONTRACT NO. 78808				
		ILLINOIS	FED. AID PROJECT	

# CLASS A PATCHING SCHEDULE (SOUTHBOUND LANES)

MILE POST	WIDTH	LENGTH	AREA	CLASS A PATCHES, TY I, 13"	CLASS A PATCHES, TY II, 13"	CLASS A PATCHES, TY III, 13"	CLASS A PATCHES, TY IV, 13"	PATCHING REINFORCEMENT	SAW CUTS	TIE BARS 3/4"
	FT	FT	SQ YD	SQ YD	SQ YD	SQ YD	SQ YD	SQ YD	FT	EACH
DRIVING LANE										
2.80	12	4	5.3		5.3			5.3	56	
	6	6	4.0	4.0				4.0	36	
3.40	12	4	5.3		5.3			5.3	56	
3.50	12	4	5.3		5.3			5.3	56	
3.90	6	6	4.0	4.0				4.0	36	
4.00	12	4	5.3		5.3			5.3	56	
	6	6	4.0	4.0				4.0	36	
4.80	6	8	5.3		5.3			5.3	40	
5.30	6	6	4.0	4.0				4.0	36	
	6	6	4.0	4.0				4.0	36	
	6	6	4.0	4.0				4.0	36	
5.80	6	6	4.0	4.0				4.0	36	
	6	6	4.0	4.0				4.0	36	
	6	6	4.0	4.0				4.0	36	
	6	15	10.0		10.0			10.0	54	
6.60	6	6	4.0	4.0				4.0	36	
	6	6	4.0	4.0				4.0	36	
	6	6	4.0	4.0				4.0	36	
	6	6	4.0	4.0				4.0	36	
6.70	6	15	10.0		10.0			10.0	54	
6.90	6	8	5.3		5.3			5.3	40	
	8	15	13.3		13.3			13.3	62	
	6	30	20.0			20.0		20.0	84	15
	6	6	4.0	4.0				4.0	36	
7.00	6	6	4.0	4.0				4.0	36	
	6	6	4.0	4.0				4.0	36	
	6	10	6.7		6.7			6.7	44	
	6	10	6.7		6.7			6.7	44	
7.10	6	50	33.3				33.3	33.3	124	25
	6	6	4.0	4.0				4.0	36	
	12	25	33.3				33.3	33.3	98	13
7.20	12	7	9.3		9.3			9.3	62	
	6	6	4.0	4.0				4.0	36	
	6	6	4.0	4.0				4.0	36	
	12	6	8.0		8.0			8.0	60	
7.30	12	4	5.3		5.3			5.3	56	
	12	4	5.3		5.3			5.3	56	
7.40	6	6	4.0	4.0				4.0	36	
7.50	6	8	5.3		5.3			5.3	40	
	6	20	13.3		13.3			13.3	64	
	12	4	5.3		5.3			5.3	56	
7.80	12	25	33.3				33.3	33.3	98	13
	6	6	4.0	4.0				4.0	36	
8.20	12	50	66.7				66.7	66.7	148	25
8.30	6	6	4.0	4.0				4.0	36	
	6	35	23.3			23.3		23.3	94	18
8.40	6	60	40.0			40.0		40.0	144	30
PASSING LANE										
4.00	12	4	5.3		5.3			5.3	56	
8.30	12	12	16.0			16.0		16.0	72	
TOTALS				88	136	59	207	490	2666	138

MODEL: S00  
FILE: \\naasdp\pub\rooms\dat\illinois\pwr\DOT\Documents\DOT\_Offices\Illinet\9\Projects\78808\CADD\Drawings\978808\_COVER.dgn

\* FAI 57 / FAP 14  
\* \* ALEXANDER / PULASKI

USER NAME = naasdp	DESIGNED -	REVISED -
	DRAWN -	REVISED -
PLOT SCALE = 100,0000' / in.	CHECKED -	REVISED -
PLOT DATE = 4/29/2020	DATE -	REVISED -

**STATE OF ILLINOIS  
DEPARTMENT OF TRANSPORTATION**

**PATCHING SCHEDULES: I-57 SOUTHBOUND**

SCALE: SHEET OF SHEETS STA. TO STA.

F.A. RTE.	SECTION	COUNTY	TOTAL SHEETS	SHEET NO.
*	D9 Patch 2021-3	**	8	6
CONTRACT NO. 78808				
ILLINOIS FED. AID PROJECT				

## CLASS A PATCHING SCHEDULE (NORTHBOUND LANES)

MILE POST	WIDTH	LENGTH	AREA	CLASS A PATCHES, TY I, 13"	CLASS A PATCHES, TY II, 13"	CLASS A PATCHES, TY III, 13"	CLASS A PATCHES, TY IV, 13"	PATCHING REINFORCEMENT	SAW CUTS	TIE BARS 3/4"
	FT	FT	SQ YD	SQ YD	SQ YD	SQ YD	SQ YD	SQ YD	FT	EACH
DRIVING LANE										
2.20	6	6	4.0	4.0				4.0	36	
2.30	6	6	4.0	4.0				4.0	36	
	12	15	20.0			20.0		20.0	78	
	12	60	80.0				80.0	80.0	168	30
	12	4	5.3		5.3			5.3	56	
6.40	6	8	5.3		5.3			5.3	40	
6.50	6	6	4.0	4.0				4.0	36	
	12	4	5.3		5.3			5.3	56	
	6	6	4.0	4.0				4.0	36	
6.70	12	4	5.3		5.3			5.3	56	
7.00	12	4	5.3		5.3			5.3	56	
	12	4	5.3		5.3			5.3	56	
7.40	6	20	13.3		13.3			13.3	64	
	6	10	6.7		6.7			6.7	44	
7.50	6	20	13.3		13.3			13.3	64	
8.70	6	15	10.0		10.0			10.0	54	
PASSING LANE										
2.30	12	4	5.3		5.3			5.3	56	
	6	6	4.0	4.0				4.0	36	
TOTALS				20	81	20	80	201	1028	30

## CLASS B PATCHING SCHEDULE (I-57/US51/IL3 ENTRANCE AND EXIT RAMPS)

PATCHING QUANTITIES PER 16X6 PATCH				
PATCH WIDTH	PATCH LENGTH	CLASS B PATCHES TYPE II 10 INCH	SAW CUTS	DOWEL BARS 1 1/2
FT	FT	SQ YD	FT	EACH
16	6	10.7	60	28

RAMP LOCATION MILEPOST 1	16X6 PATCHES PER RAMP	CLASS B PATCHES TYPE II 10 INCH	SAW CUTS	DOWEL BARS 1 1/2
		SQ YD	FT	EACH
SOUTHBOUND EXIT	17	181.3	1020	476
SOUTHBOUND ENTRANCE	11	117.3	660	308
NORTHBOUND EXIT	13	138.7	780	364
NORTHBOUND ENTRANCE	16	170.7	960	448
TOTALS		608	3420	1596

\* FAI 57 / FAP 14  
\*\* ALEXANDER / PULASKI

MODEL: SDO  
FILE: \\naasdp\pub\harcam\dat\illinois\pwr\DOT\Documents\DOT\_Offices\Illin\ct\_9\Project\78808\CADD\Drawings\78808\_COVER.dgn

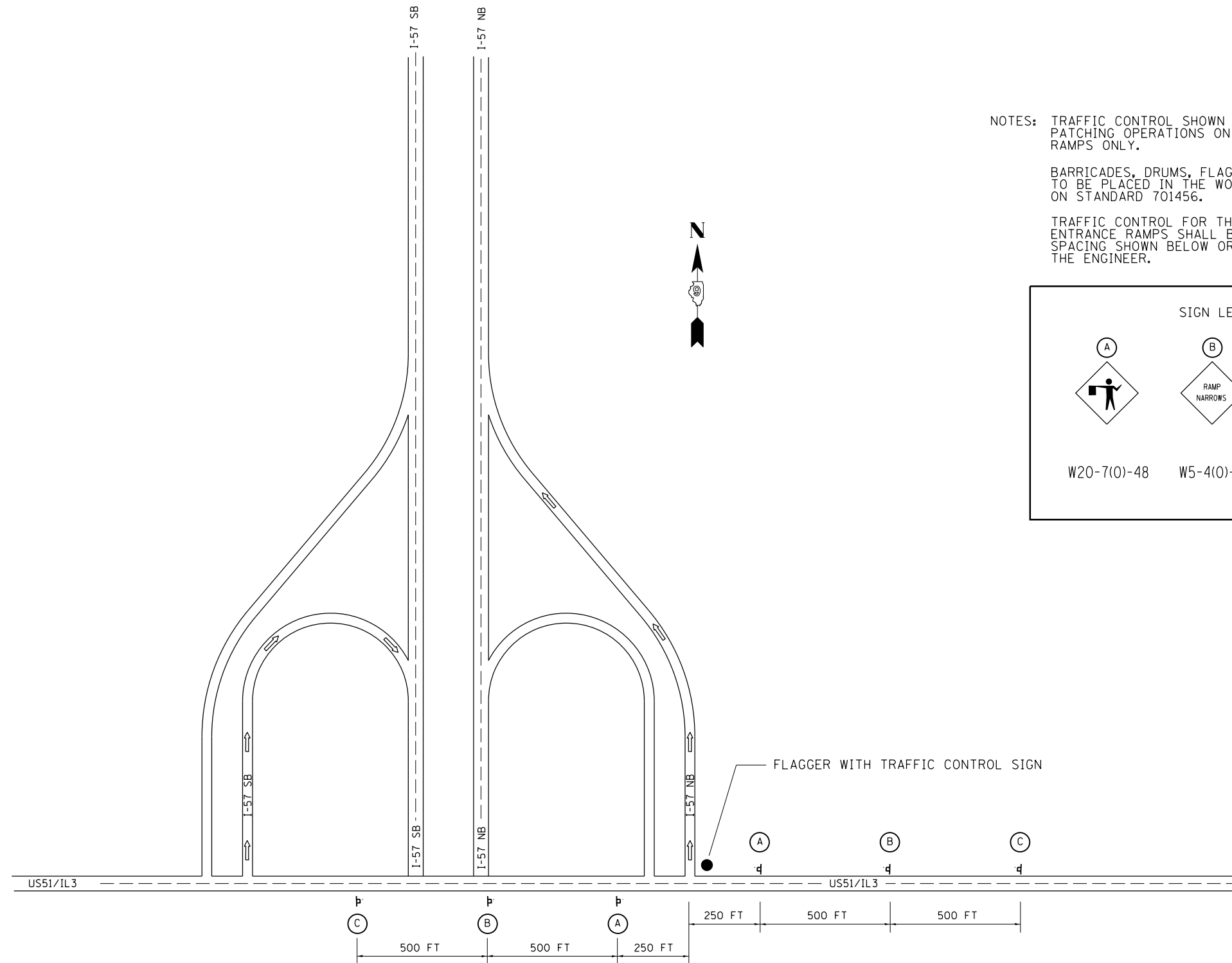
USER NAME = naasdp	DESIGNED -	REVISED -
	DRAWN -	REVISED -
PLOT SCALE = 100.0000' / in.	CHECKED -	REVISED -
PLOT DATE = 4/29/2020	DATE -	REVISED -

**STATE OF ILLINOIS  
DEPARTMENT OF TRANSPORTATION**

PATCHING SCHEDULES: I-57 NORTHBOUND & I-57 ENTRANCE /EXIT RAMPS (MP 1)			
SCALE:	SHEET	OF SHEETS	STA. TO STA.

F.A. RTE.	SECTION	COUNTY	TOTAL SHEETS	SHEET NO.
*	D9 Patch 2021-3	**	8	7
CONTRACT NO. 78808				
ILLINOIS		FED. AID PROJECT		

# TRAFFIC CONTROL AND PROTECTION STANDARD 701456


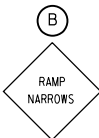

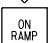


NOTES: TRAFFIC CONTROL SHOWN TO BE USED FOR THE PATCHING OPERATIONS ON THE I-57 ENTRANCE RAMP ONLY.

BARRICADES, DRUMS, FLAGGERS, AND TAPERS TO BE PLACED IN THE WORK AREA AS SHOWN ON STANDARD 701456.

TRAFFIC CONTROL FOR THE I-57 SB AND NB ENTRANCE RAMP SHALL BE PLACED AT THE SPACING SHOWN BELOW OR AS DIRECTED BY THE ENGINEER.

SIGN LEGEND

 <p>W20-7(0)-48</p>	 <p>W5-4(0)-48</p>	 <p>W20-1103(0)-48 W13-4P-3636</p>
		

MODEL COVER  
FILE NAME: P:\pub\room\dat\illinois.gov\PI\DOT\Documents\DOT\_Offices\District 9\Projects\78808\CAAD\data\CAD\sheets\0778808\_top.dwg

USER NAME = naasdp	DESIGNED -	REVISED -	
	DRAWN -	REVISED -	
PLOT SCALE = 2,000' / in.	CHECKED -	REVISED -	
PLOT DATE = 4/29/2020	DATE -	REVISED -	

**STATE OF ILLINOIS  
DEPARTMENT OF TRANSPORTATION**

**DETAILS (TRAFFIC CONTROL AND PROTECTION STANDARD 701456)**

SCALE:      SHEET      OF      SHEETS      STA.      TO      STA.

\* FAI 57 / FAP 14  
\* \* ALEXANDER / PULASKI

F.A. RTE.	SECTION	COUNTY	TOTAL SHEETS	SHEET NO.
*	D9 Patch 2021-3	* *	8	8
ILLINOIS			CONTRACT NO. 78808	
FED. AID PROJECT				