

# SUMMARY OF QUANTITIES

F&P ROUTE	SECTION	COUNTY	TOTAL SHEETS	SHEET NO.
310	42-2	JERSEY	399	3
STA.		TO STA.		
EXISTING CONDITIONS:				
CONTRACT NO. 76568				

CODE NO.	ITEM	UNIT	TOTAL QUANTITY	CONSTR. CODE	
				80% FED 20% STATE	ROADWAY 0001 RURAL
20100110	TREE REMOVAL (6 TO 15 UNITS DIAMETER)	UNIT	438	438	
20100210	TREE REMOVAL (OVER 15 UNITS DIAMETER)	UNIT	796	796	
20100500	TREE REMOVAL, ACRES	ACRE	20.7	20.7	
20200100	EARTH EXCAVATION	CU YD	543672	543672	
20700220	POROUS GRANULAR EMBANKMENT	CU YD	1905	1905	
20800150	TRENCH BACKFILL	CU YD	1100	1100	
25000200	SEEDING, CLASS 2	ACRE	60.25	60.25	
25000400	NITROGEN FERTILIZER NUTRIENT	POUND	5425	5425	
25000500	PHOSPHORUS FERTILIZER NUTRIENT	POUND	5425	5425	
25000600	POTASSIUM FERTILIZER NUTRIENT	POUND	5425	5425	
25100115	MULCH, METHOD 2	ACRE	32.25	32.25	
25100125	MULCH, METHOD 3	ACRE	21.75	21.75	
25100630	EROSION CONTROL BLANKET	SQ YD	69343	69343	
28000250	TEMPORARY EROSION CONTROL SEEDING	POUND	2350	2350	
28000305	TEMPORARY DITCH CHECKS	FOOT	1979	1979	
28000315	AGGREGATE DITCH CHECKS	TON	169	169	
28000400	PERIMETER EROSION BARRIER	FOOT	15219	15219	
28000500	INLET AND PIPE PROTECTION	EACH	41	41	
28100105	STONE RIPRAP, CLASS A3	SQ YD	4185	4185	

CODE NO.	ITEM	UNIT	TOTAL QUANTITY	CONSTR. CODE	
				80% FED 20% STATE	ROADWAY 0001 RURAL
28100107	STONE RIPRAP, CLASS A4	SQ YD	2724	2724	
28100109	STONE RIPRAP, CLASS A5	SQ YD	253	253	
28100111	STONE RIPRAP, CLASS A6	SQ YD	278	278	
28200200	FILTER FABRIC	SQ YD	3255	3255	
30300112	AGGREGATE SUBGRADE IMPROVEMENT 12"	SQ YD	122195	122195	
31101200	SUBBASE GRANULAR MATERIAL, TYPE B 4"	SQ YD	4856	4856	
31102100	SUBBASE GRANULAR MATERIAL, TYPE C 4"	SQ YD	42983	42983	
31200100	STABILIZED SUBBASE 4"	SQ YD	79271	79271	
35101400	AGGREGATE BASE COURSE, TYPE B	TON	10992	10992	
40200100	AGGREGATE SURFACE COURSE, TYPE A	TON	5286	5286	
40200800	AGGREGATE SURFACE COURSE, TYPE B	TON	100	100	
40600275	BITUMINOUS MATERIALS (PRIME COAT)	POUND	55953	55953	
40600290	BITUMINOUS MATERIALS (TACK COAT)	POUND	3197	3197	
40600982	HOT-MIX ASPHALT SURFACE REMOVAL - BUTT JOINT	SQ YD	160	160	
40603085	HOT-MIX ASPHALT BINDER COURSE, 1L-19.0, N70	TON	1202	1202	
40603090	HOT-MIX ASPHALT BINDER COURSE, 1L-19.0, N90	TON	3347	3347	
40604052	HOT-MIX ASPHALT SURFACE COURSE, 1L-9.5, MIX "C", N70	TON	1194	1194	
40800025	BITUMINOUS MATERIALS (PRIME COAT)	POUND	2973	2973	
40800050	INCIDENTAL HOT-MIX ASPHALT SURFACING	TON	134	134	

**CHASTAIN & ASSOCIATES LLC**  
 CONSULTING ENGINEERS  
 SCHMIDT, IL  
 CHAMPAIGN, IL  
 LAFAYETTE, IN  
 PADUCAH, KY  
 ROCKFORD, IL  
 BENTON, IL  
 BELLEVILLE, MO  
 184-60077

# SUMMARY OF QUANTITIES

F&P ROUTE	SECTION	COUNTY	TOTAL SHEETS	SHEET NO.
310	42-2	JERSEY	399	5
STA.		TO STA.		
EXISTING CONDITIONS:				
CONTRACT NO. 76568				

CODE NO.	ITEM	UNIT	TOTAL QUANTITY	CONSTR. CODE	
				80% FED 20% STATE	
				ROADWAY	RURAL
54215430	CAST-IN-PLACE REINFORCED CONCRETE END SECTIONS 30"	EACH	2	2	
54215460	CAST-IN-PLACE REINFORCED CONCRETE END SECTIONS 60"	EACH	2	2	
54215472	CAST-IN-PLACE REINFORCED CONCRETE END SECTIONS 72"	EACH	2	2	
54217680	REINFORCED CONCRETE PIPE TEE, 24" PIPE WITH 24" RISER	EACH	1	1	
5422D012	PIPE CULVERTS, CLASS D, TYPE 2 12" (TEMPORARY)	FOOT	108	108	
5422D015	PIPE CULVERTS, CLASS D, TYPE 2 15" (TEMPORARY)	FOOT	62	62	
5422D024	PIPE CULVERTS, CLASS D, TYPE 2 24" (TEMPORARY)	FOOT	52	52	
5422D024	PIPE CULVERTS, CLASS D, TYPE 2 24" (TEMPORARY)	FOOT	52	52	
5422D060	PIPE CULVERTS, CLASS D, TYPE 2 60" (TEMPORARY)	FOOT	30	30	
54244805	INLET BOX, STANDARD 542501	EACH	1	1	
54245205	INLET BOX, STANDARD 542511	EACH	2	2	
54245405	INLET BOX, STANDARD 542506	EACH	2	2	
54245805	INLET BOX, STANDARD 542516	EACH	3	3	
54247130	GRATING FOR FLARED END SECTION 24"	EACH	3	3	
54248510	CONCRETE COLLAR	CU YD	9.2	9.2	
54260315	TRAVERSABLE PIPE GRATE FOR CONCRETE END SECTIONS	FOOT	10	10	
60100060	CONCRETE HEADWALLS FOR PIPE DRAINS	EACH	118	118	
60100905	PIPE DRAINS 4"	FOOT	500	500	
60100915	PIPE DRAINS 6"	FOOT	500	500	
60100925	PIPE DRAINS 8"	FOOT	500	500	

CODE NO.	ITEM	UNIT	TOTAL QUANTITY	CONSTR. CODE	
				80% FED 20% STATE	
				ROADWAY	RURAL
60100935	PIPE DRAINS 10"	FOOT	500	500	
60100945	PIPE DRAINS 12"	FOOT	694	694	
60108100	PIPE UNDERDRAINS 4" (SPECIAL)	FOOT	2330	2330	
60108104	PIPE UNDERDRAINS, TYPE 1, 4"	FOOT	52505	52505	
60221100	MANHOLES, TYPE A, 5'-DIAMETER, TYPE 1 FRAME, CLOSED LID	EACH	2	2	
60222705	MANHOLES, TYPE A, 5'-DIAMETER, WITH MEDIAN INLET (604101)	EACH	7	7	
60234200	INLETS, TYPE A, TYPE 1 FRAME, OPEN LID	EACH	1	1	
60238305	INLETS, TYPE A, WITH MEDIAN INLET (604101)	EACH	1	1	
60246605	MEDIAN INLET (604101)	EACH	1	1	
60600605	CONCRETE CURB, TYPE B	FOOT	2065	2065	
60608552	COMBINATION CONCRETE CURB AND GUTTER, TYPE M-4.06	FOOT	1218	1218	
60608582	COMBINATION CONCRETE CURB AND GUTTER, TYPE M-4.24	FOOT	1222	1222	
60618320	CONCRETE MEDIAN SURFACE, 6 INCH	SQ FT	8023	8023	
60622320	CONCRETE MEDIAN, TYPE SM-4.24	SQ FT	1574	1574	
60624600	CORRUGATED MEDIAN	SQ FT	263	263	
61000050	CONCRETE THRUST BLOCKS	EACH	8	8	
61000225	TYPE F INLET BOX, STANDARD 610001	EACH	5	5	
61100500	EXPLORATION TRENCH 52" DEPTH	FOOT	6600	6600	
61100605	MISCELLANEOUS CONCRETE	CU YD	5	5	

**CHASTAIN & ASSOCIATES LLC**  
CONSULTING ENGINEERS  
CHICAGO, IL  
CHAMPAIGN, IL  
LAFAYETTE, IN  
MADISON, WI  
MILWAUKEE, WI  
MONTICELLO, IL  
MOUNTAIN VIEW, IL  
NORTON, IL  
ROCKFORD, IL  
ST. LOUIS, MO  
WABASH, IN  
WILSON, IL

18-0087



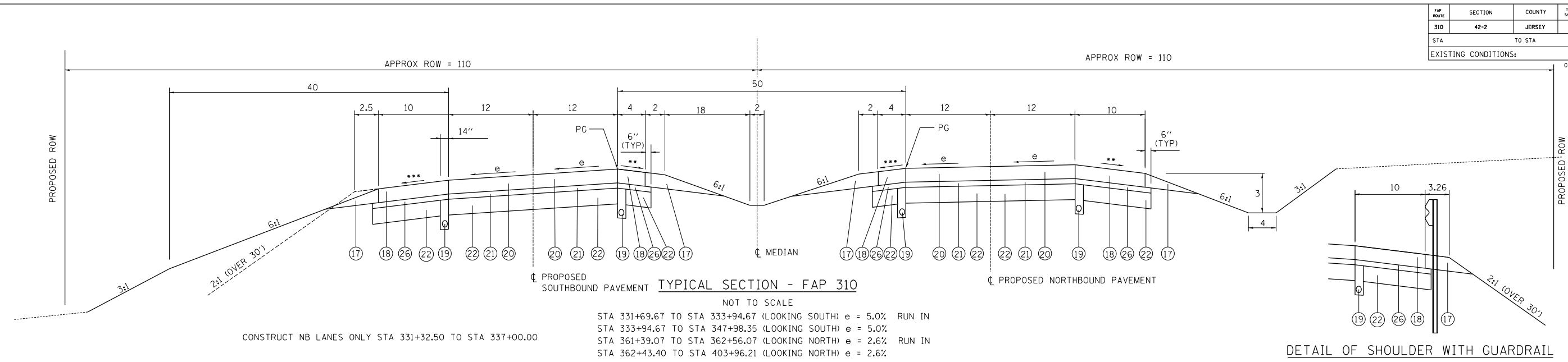


FAP ROUTE	SECTION	COUNTY	TOTAL SHEETS	SHEET NO
310	42-2	JERSEY	399	12
STA	TO STA			
EXISTING CONDITIONS:				

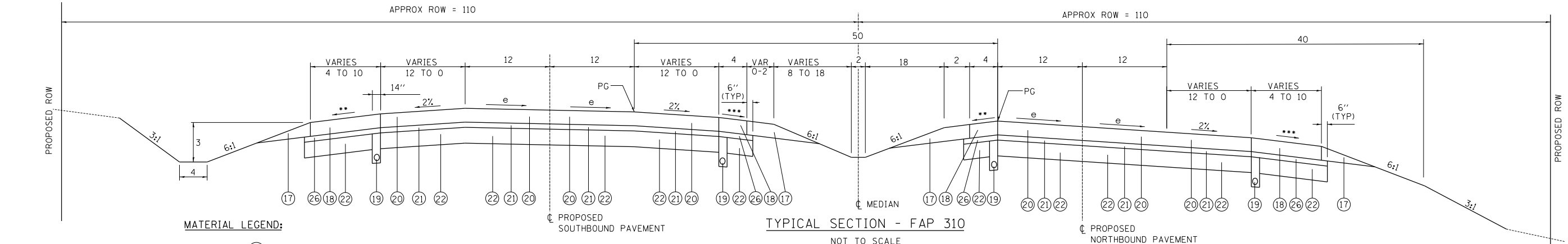
CONTRACT NO. 76568

DATE	
BY	
SURVEYED	
ALIGNED	
CHECKED	
BY	
NO.	

HOMER L. CHASTAIN & ASSOCIATES, LLP  
CONSULTING ENGINEERS  
DECATUR, IL 62521-4844  
CHICAGO, IL 60607-7144  
ROCKFORD, IL 61101-0000  
TEL: 618-489-0000  
FAX: 618-489-0000



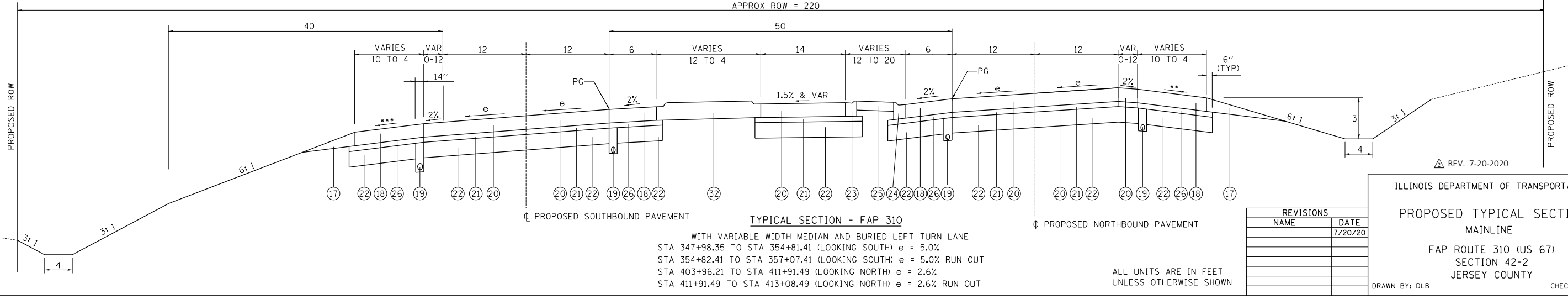
DETAIL OF SHOULDER WITH GUARDRAIL



**MATERIAL LEGEND:**

- (17) AGGREGATE SHOULDERS, TYPE B
- (18) PORTLAND CEMENT CONCRETE SHOULDERS 10 1/2"
- (19) PIPE UNDERDRAIN 4"
- (20) PORTLAND CEMENT CONCRETE PAVEMENT 10 1/2"
- (21) STABILIZED SUBBASE 4"
- (22) AGGREGATE SUBGRADE IMPROVEMENT 12"
- (23) COMBINATION CONCRETE CURB AND GUTTER, TYPE M4.24
- (24) COMBINATION CONCRETE CURB AND GUTTER, TYPE M4.06
- (25) CONCRETE MEDIAN SURFACE 6"
- (26) SUBBASE GRANULAR MATERIAL, TYPE C 4"
- (27) HMA SURFACE COURSE, IL-9.5, MIX "C", N70, 1 1/2"
- (28) HMA BINDER COURSE, IL-9.5, N70, 1 1/2"
- (29) AGGREGATE BASE COURSE, TYPE B, 8"
- (30) CONCRETE SHOULDER CURB
- (31) AGGREGATE SHOULDERS, TYPE A, 6"
- (32) CONCRETE MEDIAN, TYPE SM-4.24
- (33) SUBBASE GRANULAR MATERIAL, TYPE B, 4"
- (34) HMA BINDER COURSE, IL 19.0, N90, 12"
- (35) AGGREGATE SURFACE COURSE, TYPE A, 15"
- (36) HMA BINDER COURSE, IL-9.5, N70, 2 1/4"
- (37) AGGREGATE BASE COURSE, TYPE B, 12"
- (38) LONGITUDINAL JOINT SEALANT
- (39) BITUMINOUS MATERIALS (TACK COAT)
- (40) BITUMINOUS MATERIALS (PRIME COAT)

\*\* 4% OR 8% MINUS THE RATE OF SUPER, WHICHEVER IS MINIMUM.  
\*\*\* 4% MINIMUM OR RATE OF SUPER, WHICHEVER IS GREATER.



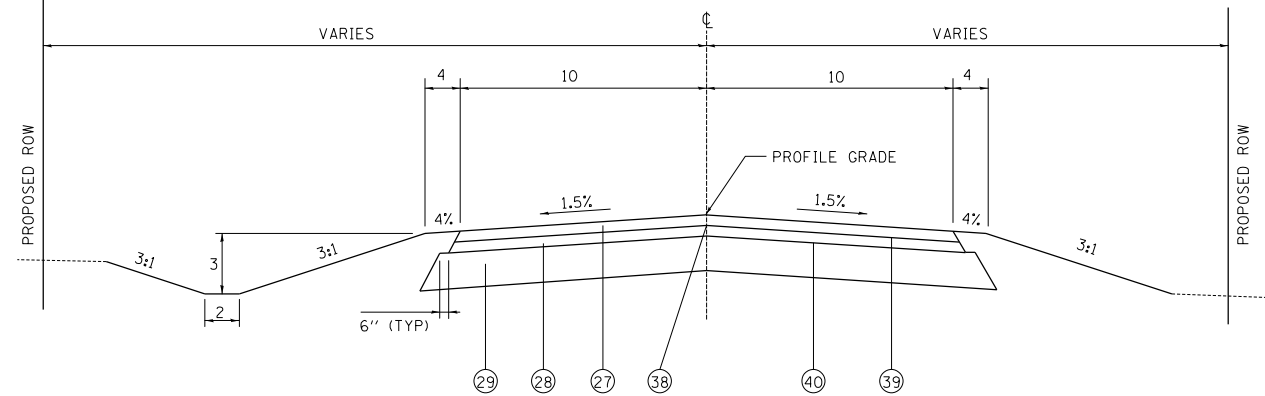
REVISIONS	
NAME	DATE
	7/20/20

ILLINOIS DEPARTMENT OF TRANSPORTATION  
**PROPOSED TYPICAL SECTIONS**  
MAINLINE  
FAP ROUTE 310 (US 67)  
SECTION 42-2  
JERSEY COUNTY  
DRAWN BY: DLB CHECKED BY: CAS

ALL UNITS ARE IN FEET  
UNLESS OTHERWISE SHOWN

FAP ROUTE	SECTION	COUNTY	TOTAL SHEETS	SHEET NO
310	42-2	JERSEY	399	14
STA		TO STA		
EXISTING CONDITIONS:				

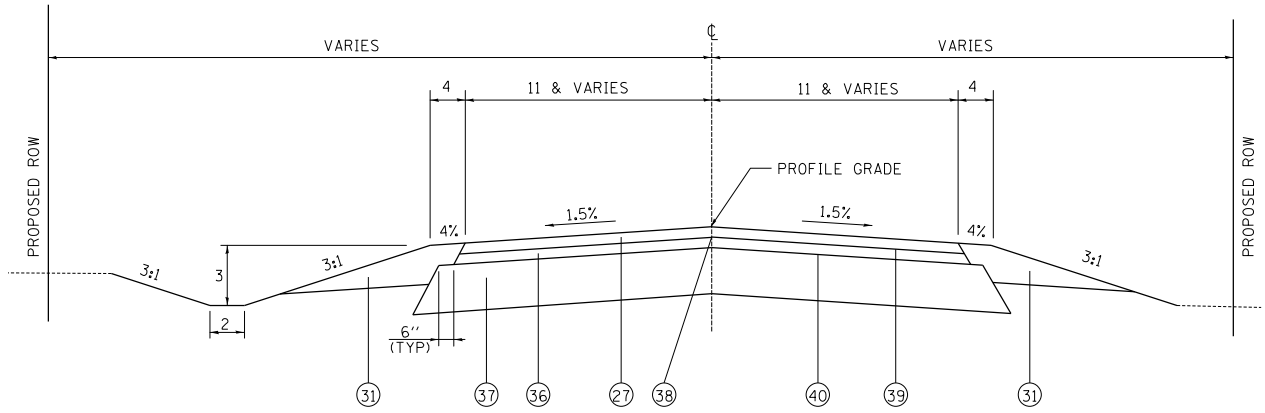
CONTRACT NO. 76568



**TYPICAL SECTION - STAGE COACH ROAD - SOUTH LEG**  
NOT TO SCALE  
STA 68+34.32 TO STA 69+19.11  
STA 69+19.11 TO STA 69+89.00

**STAGE COACH ROAD - SOUTH LEG**

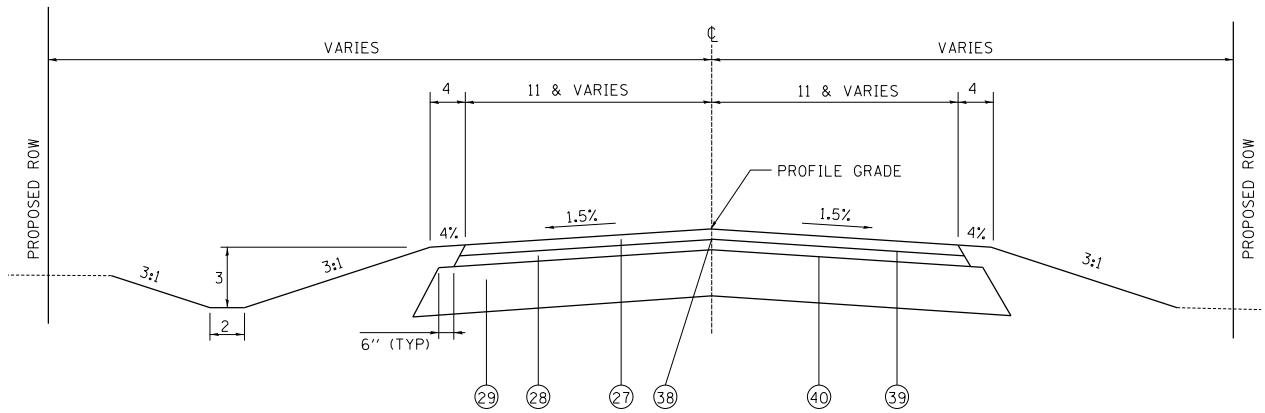
STRUCTURAL DESIGN TRAFFIC: Year 2041  
 PV= 350 SU= 4.7 MU= 4.7  
 ROAD/STREET CLASSIFICATION: Class: IV  
 PERCENT OF STRUCTURAL DESIGN TRAFFIC IN DESIGN LANE:  
 P= 50% S= 50% M= 50%  
 TRAFFIC FACTOR: Actual TF= 0.001 AC Type= 20  
 Minimum TF= DOES NOT APPLY  
 PG GRADE: Binder= Surface=  
 SUBGRADE SUPPORT RATING: IBR=3.0



**TYPICAL SECTION - STAGE COACH ROAD - NORTH LEG**  
NOT TO SCALE  
STA 70+11.00 TO STA 70+80.47  
STA 70+80.47 TO STA 72+09.54

**STAGE COACH ROAD - NORTH LEG**

STRUCTURAL DESIGN TRAFFIC: Year 2041  
 PV= 1100 SU= 5.0 MU= 3.0  
 ROAD/STREET CLASSIFICATION: Class: IV  
 PERCENT OF STRUCTURAL DESIGN TRAFFIC IN DESIGN LANE:  
 P= 50% S= 50% M= 50%  
 TRAFFIC FACTOR: Actual TF= 0.003 AC Type= 20  
 Minimum TF= DOES NOT APPLY  
 PG GRADE: Binder= Surface=  
 SUBGRADE SUPPORT RATING: IBR=3.0



**TYPICAL SECTION - US 67 CONNECTOR**  
NOT TO SCALE  
STA 24+30.47 TO STA 29+38.31 (PAVEMENT STRUCTURE CONTROLLED BY MAIN LINE TYPICAL SECTION)

**US 67 CONNECTOR**

STRUCTURAL DESIGN TRAFFIC: Year 2041  
 PV= 500 SU= 3.0 MU= 1.5  
 ROAD/STREET CLASSIFICATION: Class: IV  
 PERCENT OF STRUCTURAL DESIGN TRAFFIC IN DESIGN LANE:  
 P= 50% S= 50% M= 50%  
 TRAFFIC FACTOR: Actual TF= 0.002 AC Type= 20  
 Minimum TF= DOES NOT APPLY  
 PG GRADE: Binder= Surface=  
 SUBGRADE SUPPORT RATING: IBR=3.0

**MATERIAL LEGEND:**

- 17 AGGREGATE SHOULDERS, TYPE B
- 18 PORTLAND CEMENT CONCRETE SHOULDERS 10 1/2"
- 19 PIPE UNDERDRAIN 4"
- 20 PORTLAND CEMENT CONCRETE PAVEMENT 10 1/2"
- 21 STABILIZED SUBBASE 4"
- 22 AGGREGATE SUBGRADE IMPROVEMENT 12"
- 23 COMBINATION CONCRETE CURB AND GUTTER, TYPE M4.24
- 24 COMBINATION CONCRETE CURB AND GUTTER, TYPE M4.06
- 25 CONCRETE MEDIAN SURFACE 6"
- 26 SUBBASE GRANULAR MATERIAL, TYPE C 4"
- 27 HMA SURFACE COURSE, IL-9.5, MIX "C", N70, 1 1/2"
- 28 HMA BINDER COURSE, IL-9.5, N70, 1 1/2"
- 29 AGGREGATE BASE COURSE, TYPE B, 8"
- 30 CONCRETE SHOULDER CURB
- 31 AGGREGATE SHOULDERS, TYPE A, 6"
- 32 CONCRETE MEDIAN, TYPE SM-4.24
- 33 SUBBASE GRANULAR MATERIAL, TYPE B, 4"
- 34 HMA BINDER COURSE, IL 19.0, N90, 12"
- 35 AGGREGATE SURFACE COURSE, TYPE A, 15"
- 36 HMA BINDER COURSE, IL-9.5, N70, 2 1/4"
- 37 AGGREGATE BASE COURSE, TYPE B, 12"
- 38 LONGITUDINAL JOINT SEALANT
- 39 BITUMINOUS MATERIALS (TACK COAT)
- 40 BITUMINOUS MATERIALS (PRIME COAT)

REV. 7-20-2020

PLAN	DATE
SURVEYED	
ALIGNED	
CHECKED	
BY	
NO.	

**HOMER L. CHASTAIN & ASSOCIATES, LLP**  
CONSULTING ENGINEERS  
DECATUR 770-422-8544  
CHICAGO 773-714-0050  
ROCKFORD 815-489-0860  
184-00187

ALL UNITS ARE IN FEET  
UNLESS OTHERWISE SHOWN

REVISIONS	
NAME	DATE
	7/20/20

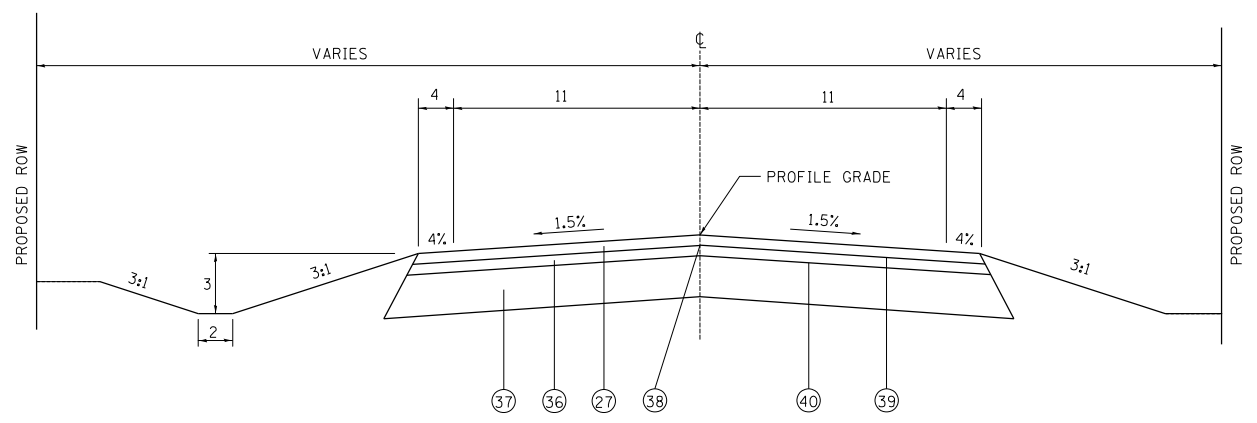
ILLINOIS DEPARTMENT OF TRANSPORTATION  
**PROPOSED TYPICAL SECTIONS**  
 SIDEROADS  
 FAP ROUTE 310 (US 67)  
 SECTION 42-2  
 JERSEY COUNTY  
 DRAWN BY: LBM CHECKED BY: CAS

FAP ROUTE	SECTION	COUNTY	TOTAL SHEETS	SHEET NO
310	42-2	JERSEY	399	15
STA		TO STA		
EXISTING CONDITIONS:				

CONTRACT NO. 76568

PLAN	DATE
SURVEYED	
ALIGNED	
CHECKED	
BY	
NO.	

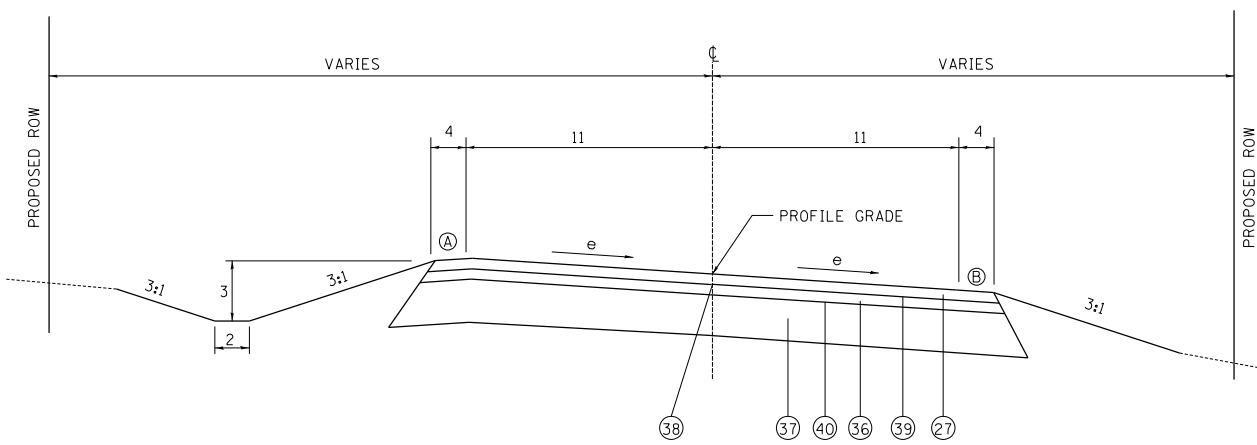
**HOMER L. CHASTAIN & ASSOCIATES, LLP**  
CONSULTING ENGINEERS  
DECATUR IL 62521-4844  
CHICAGO IL 60607-1400  
ROCKFORD IL 61101-0977



TYPICAL SECTION - DELHI ROAD  
NOT TO SCALE

STA 36+63.83 TO STA 37+50.53  
STA 42+44.00 TO STA 43+67.72  
STA 50+66.87 TO STA 50+92.62  
STA 56+18.05 TO STA 61+00.10  
STA 65+14.22 TO STA 65+20.00

NOTE: THE HMA SHOULDER SHALL BE PLACED IN THE SAME OPERATION AS THE ADJACENT HMA PAVEMENT LANE. THEREFORE A LONGITUDINAL JOINT BETWEEN SHOULDER AND ROADWAY LANE WILL NOT BE PERMITTED.



TYPICAL SECTION - DELHI ROAD  
NOT TO SCALE

STA 37+50.53 TO STA 38+52.75 SE RUN IN (LOOKING EAST)  
STA 38+52.75 TO STA 41+43.62 e=-4.1%  
STA 41+43.62 TO STA 42+42.62 SE RUN OUT (LOOKING EAST)

STA 43+67.72 TO STA 44+99.72 SE RUN IN (LOOKING WEST)  
STA 44+99.72 TO STA 47+81.00 e=6.0%  
STA 47+80.80 TO STA 49+32.99 SE RUN OUT (LOOKING WEST)

STA 50+92.62 TO STA 52+24.62 SE RUN IN (LOOKING EAST)  
STA 52+24.62 TO STA 54+86.05 e=6.0%  
STA 54+86.05 TO STA 56+18.05 SE RUN OUT (LOOKING EAST)

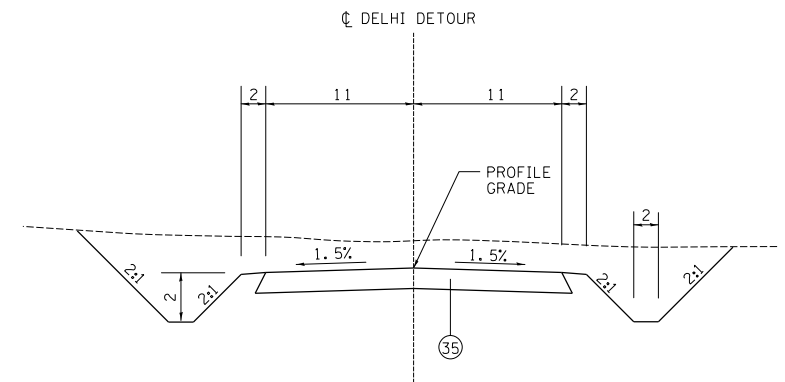
STA 61+00.10 TO STA 61+92.10 SE RUN IN (LOOKING WEST)  
STA 61+92.10 TO STA 64+22.22 e=3.8%  
STA 64+22.22 TO STA 65+14.22 SE RUN OUT (LOOKING WEST)

(A) 4% OR 8% MINUS THE RATE OF SUPER, WHICHEVER IS MINIMUM  
(B) 4% MINIMUM OR THE RATE OF SUPER, WHICHEVER IS GREATER

NOTE: THE HMA SHOULDER SHALL BE PLACED IN THE SAME OPERATION AS THE ADJACENT HMA PAVEMENT LANE. THEREFORE A LONGITUDINAL JOINT BETWEEN SHOULDER AND ROADWAY LANE WILL NOT BE PERMITTED.

**DELHI ROAD**

STRUCTURAL DESIGN TRAFFIC:	Year 2041
PV=	2800 SU= 3.5 MU= 1.7
ROAD/STREET CLASSIFICATION:	Class: III
PERCENT OF STRUCTURAL DESIGN TRAFFIC IN DESIGN LANE:	P= 50% S= 50% M= 50%
TRAFFIC FACTOR:	Actual TF= 0.048 AC Type= 20 Minimum TF= DOES NOT APPLY
PG GRADE:	Binder= Surface=
SUBGRADE SUPPORT RATING:	IBR=3.0



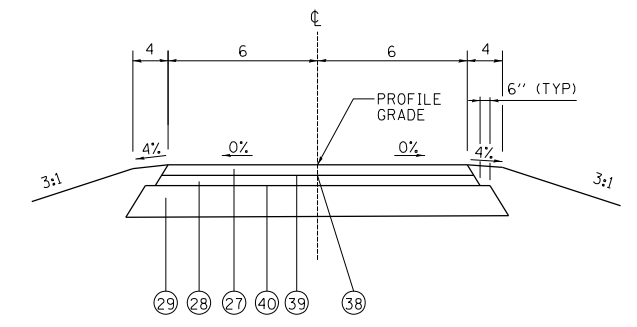
TYPICAL SECTION - DELHI DETOUR  
NOT TO SCALE

**MATERIAL LEGEND:**

- (17) AGGREGATE SHOULDERS, TYPE B
- (18) PORTLAND CEMENT CONCRETE SHOULDERS 10 1/2"
- (19) PIPE UNDERDRAIN 4"
- (20) PORTLAND CEMENT CONCRETE PAVEMENT 10 1/2"
- (21) STABILIZED SUBBASE 4"
- (22) AGGREGATE SUBGRADE IMPROVEMENT 12"
- (23) COMBINATION CONCRETE CURB AND GUTTER, TYPE M4.24
- (24) COMBINATION CONCRETE CURB AND GUTTER, TYPE M4.06
- (25) CONCRETE MEDIAN SURFACE 6"
- (26) SUBBASE GRANULAR MATERIAL, TYPE C 4"
- (27) HMA SURFACE COURSE, IL-9.5, MIX "C", N70, 1 1/2"
- (28) HMA BINDER COURSE, IL-9.5, N70, 1 1/2"
- (29) AGGREGATE BASE COURSE, TYPE B, 8"
- (30) CONCRETE SHOULDER CURB
- (31) AGGREGATE SHOULDERS, TYPE A, 6"
- (32) CONCRETE MEDIAN, TYPE SM-4.24
- (33) SUBBASE GRANULAR MATERIAL, TYPE B, 4"
- (34) HMA BINDER COURSE, IL 19.0, N90, 12"
- (35) AGGREGATE SURFACE COURSE, TYPE A, 15"
- (36) HMA BINDER COURSE, IL-9.5, N70, 2 1/4"
- (37) AGGREGATE BASE COURSE, TYPE B, 12"
- (38) LONGITUDINAL JOINT SEALANT
- (39) BITUMINOUS MATERIALS (TACK COAT)
- (40) BITUMINOUS MATERIALS (PRIME COAT)

**SERVICE DRIVE**

STRUCTURAL DESIGN TRAFFIC:	Year 2041
PV=	50 SU= 0.6 MU= 0.5
ROAD/STREET CLASSIFICATION:	Class: IV
PERCENT OF STRUCTURAL DESIGN TRAFFIC IN DESIGN LANE:	P= 50% S= 50% M= 50%
TRAFFIC FACTOR:	Actual TF= 0.001 AC Type= 20 Minimum TF= DOES NOT APPLY
PG GRADE:	Binder= Surface=
SUBGRADE SUPPORT RATING:	IBR=3.0



TYPICAL SECTION - SERVICE DRIVE  
NOT TO SCALE  
STA 100+00 TO STA 104+00

REV. 7-20-2020

REVISIONS	
NAME	DATE
	7/20/20

ILLINOIS DEPARTMENT OF TRANSPORTATION  
**PROPOSED TYPICAL SECTIONS**  
SIDEROADS  
FAP ROUTE 310 (US 67)  
SECTION 42-2  
JERSEY COUNTY  
DRAWN BY: LBM CHECKED BY: CAS

ALL UNITS ARE IN FEET  
UNLESS OTHERWISE SHOWN

FAP ROUTE	SECTION	COUNTY	TOTAL SHEETS	SHEET NO
310	42-2	JERSEY	399	22
STA		TO STA		
EXISTING CONDITIONS:				
CONTRACT NO. 76568				

### CURB AND GUTTER

STATION	OFFSET	STATION	OFFSET	COMBINATION CONCRETE CURB AND GUTTER TYPE M-4.06 (FT)	COMBINATION CONCRETE CURB AND GUTTER TYPE M-4.24 (FT)
US 67					
345+00.00	59.0' RT	351+40.00	59.0' RT		
346+86.00	59.0' LT	351+40.00	59.0' LT		
352+82.06	7.0' LT	354+03.60	14.7' LT		122
352+82.06	17.9' LT	354+03.60	19.0' LT	122	
351+65.40	14.7' RT	354+46.06	4.3' RT		281
351+65.40	19.0' RT	354+48.60	19.0' RT	283	
354+46.06	4.3' LT	354+56.80	11.0' LT		19
354+48.60	19.0' RT	354+56.60	11.0' RT	11	
407+63.70	14.6' RT	410+23.80	2.4' RT		261
407+63.70	19.0' RT	410+25.80	19.0' RT	262	
408+78.30	7.0' LT	409+99.20	15.0' LT		121
408+78.30	17.9' RT	409+99.20	18.5' RT	121	
410+23.80	2.4' LT	410+33.80	7.6' LT		14
410+25.80	19.0' LT	410+33.80	7.6' LT	14	
411+28.00	7.1' LT	411+38.80	2.9' LT		15
411+28.00	7.1' LT	411+35.90	18.3' LT	14	
411+35.90	18.2' LT	414+02.20	18.5' LT	266	
411+38.80	2.9' RT	414+02.20	14.7' RT		264
411+63.10	15.2' RT	412+87.60	6.9' RT		125
411+63.10	19.2' RT	412+87.60	18.9' RT	125	
434+92.00	59.0' LT	440+25.00	59.0' LT		
435+87.00	59.0' RT	440+25.00	59.0' RT		
PROJECT TOTAL				1,218	1,222

### CONCRETE MEDIAN

STATION	TO	STATION	CONCRETE MEDIAN SURFACE, 6 INCH (SQ FT)	CONCRETE MEDIAN, TYPE SM-4.24 (SQ FT)	CORRUGATED MEDIAN (SQ FT)
US 67					
351+36.0	RT				94
351+65.1		354+55.6	2,910		
352+82.2		353+98.6		518	
407+46.0	RT				82
407+63.8		410+32.8	2,553		
408+78.3		409+93.8		529	
411+29.3		414+02.2	2,560		
411+68.3		412+87.6		527	
414+33.0	LT				87
PROJECT TOTAL			8,023	1,574	263

### ENTRANCES

STATION	OFFSET	TYPE	INCIDENTAL HOT-MIX ASPHALT SURFACING (TON)	AGGREGATE BASE COURSE, TYPE B (TON)	AGGREGATE SURFACE COURSE, TYPE B 6" (SQ YD)	BITUMINOUS MATERIALS (PRIME COAT) (POUND)
US 67 SOUTHBOUND						
419+28.0	LT	FE			165	
448+70.0	LT	FE			164	
US 67 NORTHBOUND						
357+61.0	RT	FE			161	
362+02.0	RT	FE			169	
365+37.0	RT	FE			160	
369+50.0	RT	FE			160	
376+88.0	RT	FE			161	
382+00.0	RT	FE			113	
452+57.0	RT	FE•	19	52		416
459+87.0	RT	FE			531	
463+00.0	RT	FE			179	
DELHI ROAD						
37+75.7	LT	CE	29	80		651
38+70.9	LT	CE	29	80		653
39+58.6	LT	PE			129	
43+40.5	LT	CE	25	70		564
55+00.0	RT	PE	31	85		689
57+50.0	LT	PE			63	
STAGE COACH ROAD						
68+85.0	LT	PE			113	
70+90.0	RT	PE			46	
SCHEDULE TOTAL (1)			134	367	2,314	2,973
*CASE 1 ENTRANCE FOR SNOW PLOW TURN-AROUND (1) NOT PROJECT TOTAL						

### GUARDRAIL

STATION	STATION	OFFSET	STEEL PLATE BEAM GUARD RAIL TYPE A, 6 FT POSTS (FT)	TRAFFIC BARRIER TERMINAL, TYPE 2 (EACH)	TRAFFIC BARRIER TERMINAL, TYPE 1 (SPECIAL) TANGENT (EACH)	CONCRETE SHOULDER CURB (FT)	GUARDRAIL REFLECTORS, TYPE A (EACH)	TERMINAL MARKER - DIRECT APPLIED (EACH)
US 67								
337+02.50	337+52.50	RT			1			1
337+02.50	351+54.80	RT					11	
337+52.50	351+40.00	RT	1,387.5					
345+00.00	351+40.00	RT				640		
346+70.70	346+85.50	LT		1				
346+70.70	353+98.00	LT					7	
346+85.50	353+48.00	LT	662.5					
346+86.00	351+40.00	LT				454		
351+40.00	351+54.80	RT		1				
353+48.00	353+98.00	LT			1			1
398+14.50	398+64.50	RT			1			1
398+14.50	402+29.30	RT					5	
398+64.50	402+14.50	RT	350.0					
401+87.00	402+09.00	RT				22		
402+14.50	402+29.30	RT		1				
432+14.50	432+64.50	RT			1			1
432+14.50	440+41.80	RT					6	
432+64.50	440+27.00	RT	762.5					
434+70.20	434+85.00	LT		1				
434+70.20	443+97.50	LT					6	
434+85.00	443+47.50	LT	862.5					
434+92.00	440+25.00	LT				533		
435+87.00	440+25.00	RT				438		
440+27.00	440+41.80	RT		1				
443+47.50	443+97.50	LT			1			1
PROJECT TOTAL			4,025	5	5	2,087	35	5

REV. 7-20-2020

ILLINOIS DEPARTMENT OF TRANSPORTATION

### SCHEDULE OF QUANTITIES

FAP ROUTE 310 (US 67)  
SECTION 42-2  
JERSEY COUNTY

DRAWN BY: LBM

CHECKED BY: CAS

REVISIONS	
NAME	DATE
	7-20-20

PLAN	SURVEYED	BY	DATE
	ALIGNED		
	CHECKED		
	FILED		
	NO.		

**CHASTAIN & ASSOCIATES LLC**  
CONSULTING ENGINEERS  
DECATUR, IL  
CHAMPAIGN, IL  
MOUNTAIN VIEW, MO  
PADOVA, KY  
184-9887

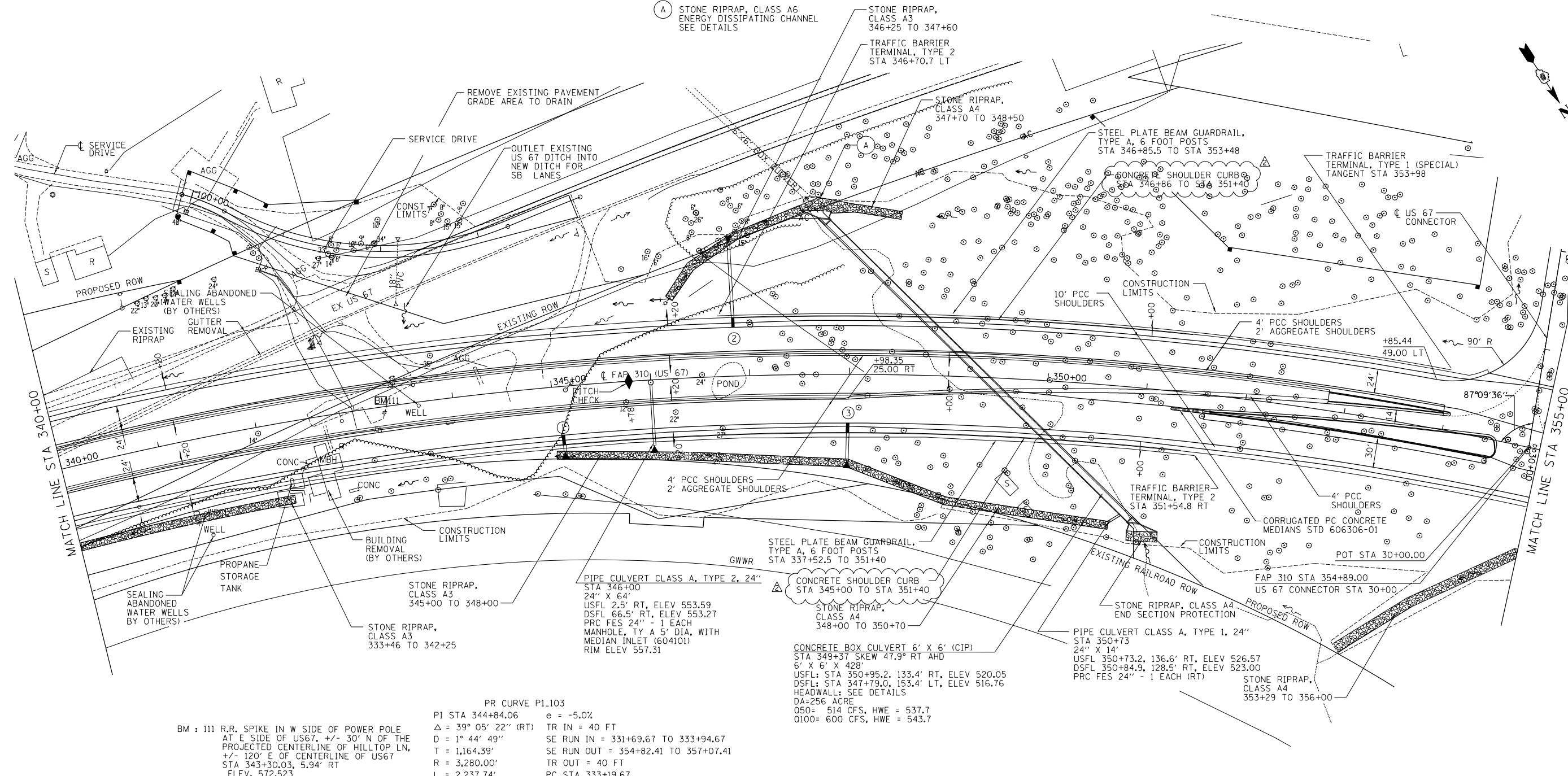


FAP ROUTE	SECTION	COUNTY	TOTAL SHEETS	SHEET NO.
310	42-2	JERSEY	399	37
STA.	TO STA.			
EXISTING CONDITIONS:				

CONTRACT NO. 76568

PLAN	NO.	DATE
BY		
CHECKED		
DATE		

**HOMER L. CHASTAIN & ASSOCIATES, LLP**  
CONSULTING ENGINEERS  
DECATUR, GA 30030  
ROCKFORD, IL 61107  
TEL: 770-422-8644  
TEL: 815-998-0080  
FAX: 770-422-8644  
FAX: 815-998-0080

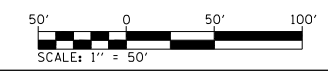


PR CURVE P1.103  
PI STA 344+84.06 e = -5.0%  
Δ = 39° 05' 22" (RT) TR IN = 40 FT  
D = 1° 44' 49" SE RUN IN = 331+69.67 TO 333+94.67  
T = 1,164.39' SE RUN OUT = 354+82.41 TO 357+07.41  
R = 3,280.00' TR OUT = 40 FT  
L = 2,237.74' PC STA 333+19.67  
E = 200.55' PT STA 355+57.41

BM : 111 R.R. SPIKE IN W SIDE OF POWER POLE  
AT E SIDE OF US67, +/- 30' N OF THE  
PROJECTED CENTERLINE OF HILLTOP LN,  
+/- 120' E OF CENTERLINE OF US67  
STA 343+30.03, 5.94' RT  
ELEV. 572.523

- ① TYPE F INLET BOX, STANDARD 610001  
STA 345+06 RT  
PIPE DRAINS 12" X 8"  
END SECTIONS 12" - 1 EACH
- ② TYPE F INLET BOX, STANDARD 610001  
STA 346+86 LT  
PIPE DRAINS 12" X 81"  
END SECTIONS 12" - 1 EACH  
CONCRETE THRUST BLOCKS - 3 EACH
- ③ TYPE F INLET BOX, STANDARD 610001  
STA 348+00 RT  
PIPE DRAINS 12" X 31"  
END SECTIONS 12" - 1 EACH  
CONCRETE THRUST BLOCKS - 1 EACH

REV. 7-20-2020



ILLINOIS DEPARTMENT OF TRANSPORTATION  
ROADWAY PLAN STA 340+00 TO 355+00  
FAP ROUTE 310 (US 67)  
SECTION 42-2  
JERSEY COUNTY  
DRAWN BY: EMR CHECKED BY: CAS

REVISIONS	
NAME	DATE
	7/20/20

STA 340+00 TO STA 355+00

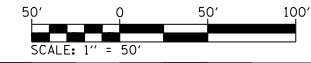
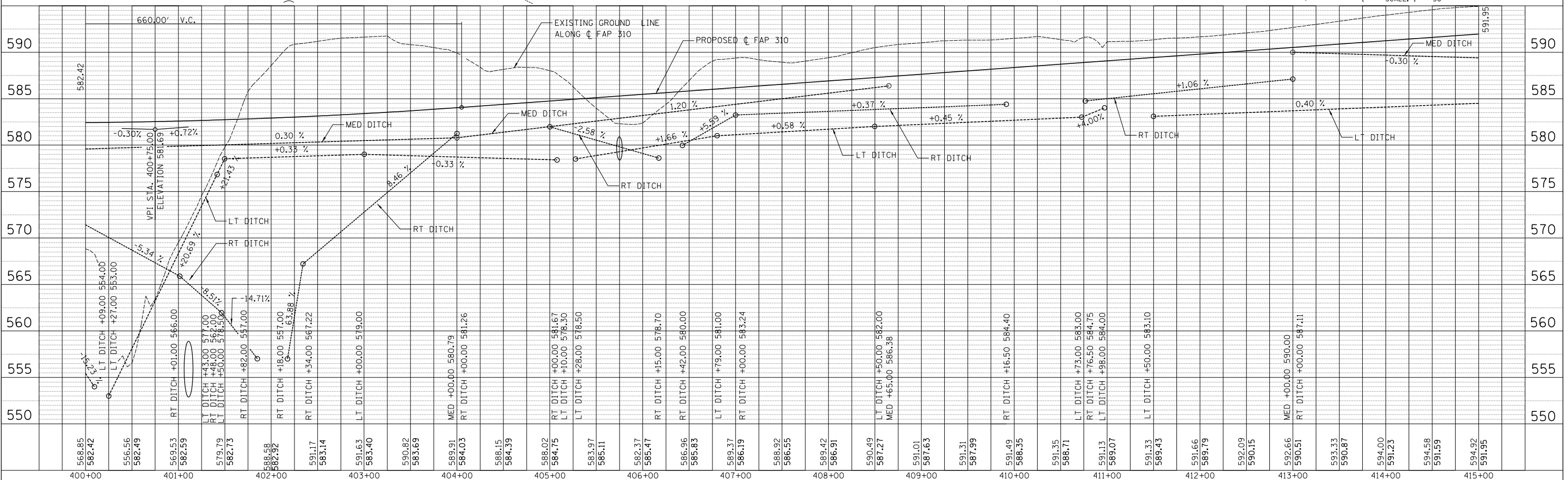
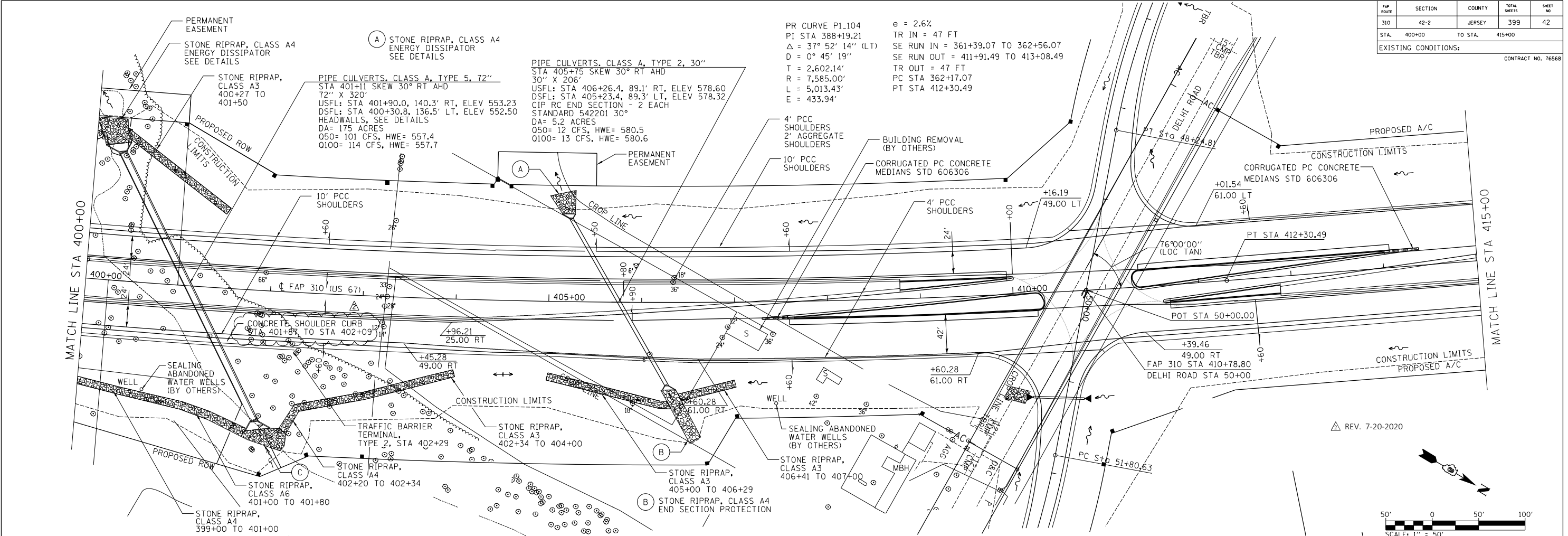
FAP NO.	SECTION	COUNTY	TOTAL SHEETS	SHEET NO.
310	42-2	JERSEY	399	42
STA. 400+00		TO STA. 415+00		

EXISTING CONDITIONS:  
CONTRACT NO. 76568

PLAN	DATE
SURVEYED	
ALIGNED	
CHECKED	
BY	
NO.	

**HOMER L. CHASTAIN & ASSOCIATES, LLP**  
CONSULTING ENGINEERS  
DECATUR, GA 30030  
ROCKFORD, IL 61101  
184-001397

PROFILE	DATE
SURVEYED	
GRADES CHECKED	
BY	
NO.	



REV. 7-20-2020

FAP ROUTE	SECTION	COUNTY	TOTAL SHEETS	SHEET NO.
310	42-2	JERSEY	399	44
STA. 430+00		TO STA. 445+00		

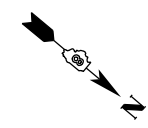
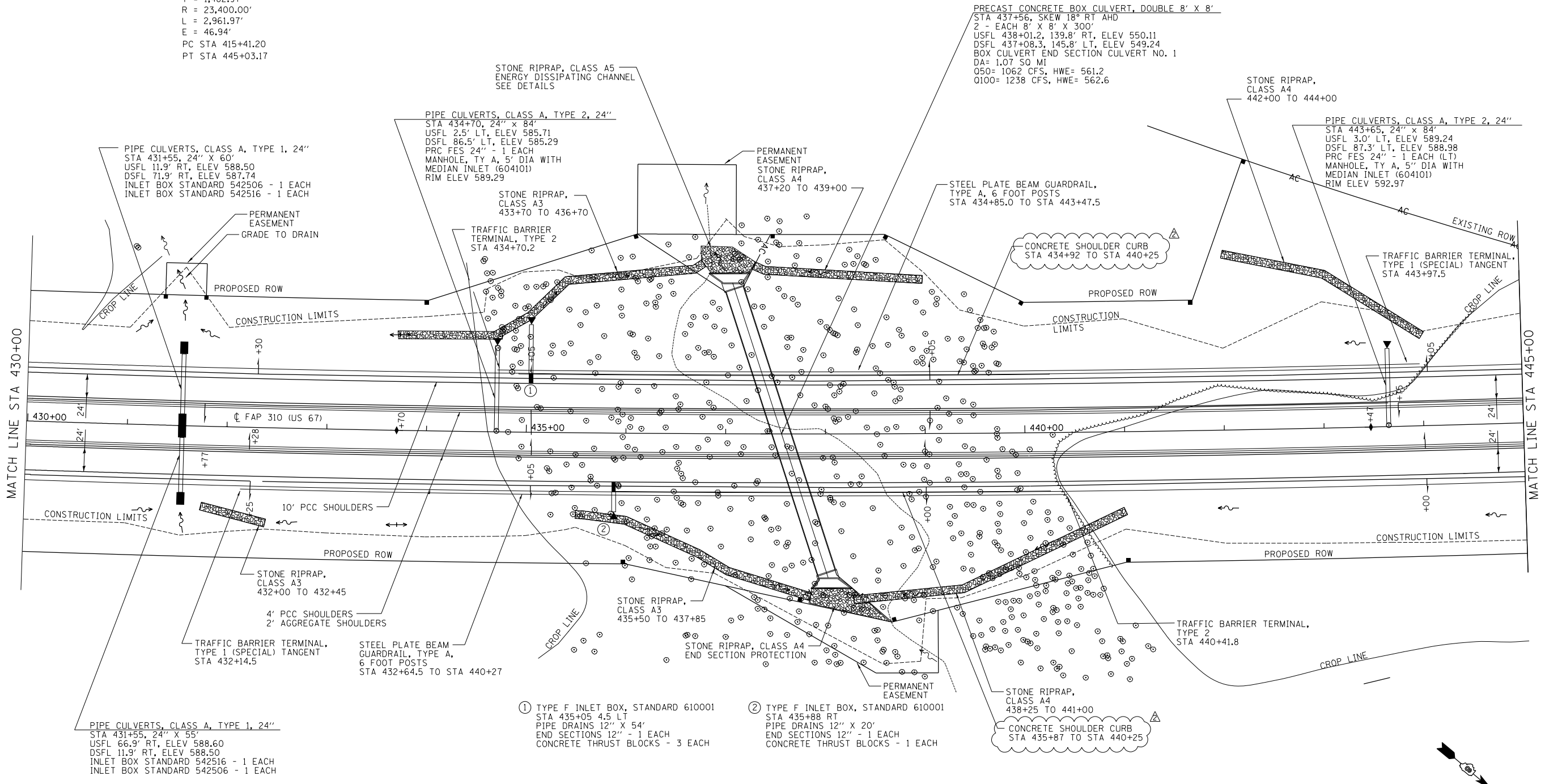
CONTRACT NO. 76568

EXISTING CONDITIONS:

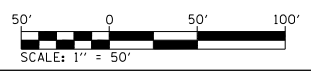
PR CURVE P1.105  
 PI STA 430+24.17  
 $\Delta = 7^\circ 15' 09''$  (LT)  
 $D = 0^\circ 14' 41''$   
 $T = 1,482.97'$   
 $R = 23,400.00'$   
 $L = 2,961.97'$   
 $E = 46.94'$   
 PC STA 415+41.20  
 PT STA 445+03.17

PLAN	NO.	DATE

**HOMER L. CHASTAIN & ASSOCIATES, LLP**  
 CONSULTING ENGINEERS  
 DECATUR, GA 30030  
 ROCKFORD, IL 61103  
 (770) 422-8664  
 (815) 498-9080  
 FAX (770) 422-8664  
 FAX (815) 498-9080  
 184-001397



REV. 7-20-2020



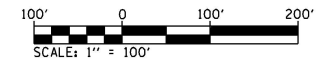
ILLINOIS DEPARTMENT OF TRANSPORTATION  
 ROADWAY PLAN STA 430+00 TO 445+00  
 FAP ROUTE 310 (US 67)  
 SECTION 42-2  
 JERSEY COUNTY  
 DRAWN BY: EMR  
 CHECKED BY: CAS

REVISIONS	
NAME	DATE
	7/20/20

STA 430+00 TO STA 445+00

FAP ROUTE	SECTION	COUNTY	TOTAL SHEETS	SHEET NO.
310	42-2	JERSEY	393	58
STA. TO STA.		EXISTING CONDITIONS:		

CONTRACT NO. 76568



**TRAFFIC CONTROL PLAN**

DURING THE CONSTRUCTION PERIOD IT IS THE INTENTION OF THE DEPARTMENT THAT US 67 AND ALL ADJACENT SIDE STREETS REMAIN OPEN TO TWO-WAY THROUGH TRAFFIC AT ALL TIMES EXCEPT AS DESCRIBED HEREIN. THIS SHALL BE ACCOMPLISHED IN ACCORDANCE WITH ARTICLE 107.14 OF THE STANDARD SPECIFICATIONS AND AS SHOWN AND DESCRIBED IN THESE PLANS.

THE CONTRACTOR SHALL FURNISH AND INSTALL 45 MPH REGULATORY SPEED LIMIT SIGNS ON US 67 AND 30 MPH WARNING SIGNS ON THE SIDE ROADS. THESE SIGNS SHALL BE PLACED IN ACCORDANCE WITH THE TRAFFIC CONTROL AND PROTECTION STANDARD IN EFFECT DURING EACH PORTION OF THE CONSTRUCTION.

THE CONTRACTOR SHALL PROVIDE AND MAINTAIN ACCESS TO THE PRIVATE, FIELD, AND COMMERCIAL ENTRANCES TO PROPERTIES ABUTTING THE ROADWAY BEING IMPROVED IN ACCORDANCE WITH ARTICLE 107.09 OF THE STANDARD SPECIFICATIONS. ACCESS TO THE COMMERCIAL PROPERTIES SHALL, AT NO TIME, BE SHUT OFF COMPLETELY. GAP WIDENING, HALF-WIDTH CONSTRUCTION, AND TEMPORARY GRAVEL SURFACES SHALL BE USED TO PROVIDE ALL-WEATHER ACCESS TO THE ABOVE LOCATION. AT NO TIME SHALL A PRIVATE ENTRANCE BE CLOSED FOR MORE THAN EIGHT HOURS.

THE COST OF FURNISHING, PLACING, AND MAINTAINING THE TEMPORARY GRAVEL SURFACES WILL BE PAID FOR AT THE CONTRACT UNIT PRICE PER TON FOR AGGREGATE SURFACE COURSE, TYPE B 6", OF WHICH AN ESTIMATED QUANTITY IS INCLUDED IN THE PLANS.

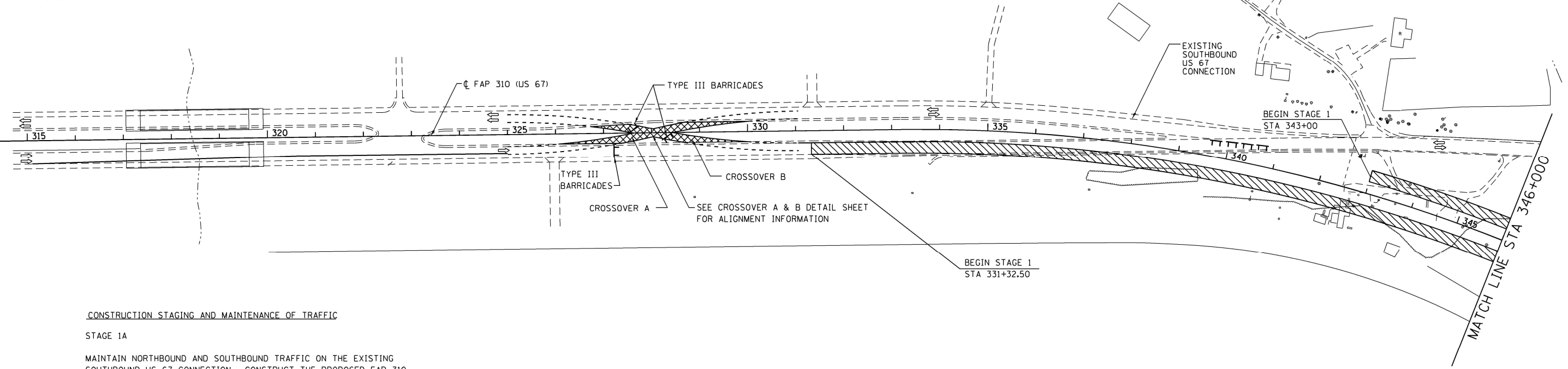
THE REMOVAL AND DISPOSAL OF ALL TEMPORARY GRAVEL SURFACES WILL BE CONSIDERED AS INCLUDED IN THE COST OF TRAFFIC CONTROL AND PROTECTION (SPECIAL) AND NO ADDITIONAL COMPENSATION WILL BE ALLOWED.

THE CONTRACTOR SHALL BE SOLELY RESPONSIBLE FOR THE STAGE CONSTRUCTION OF ALL CULVERTS, STORM SEWERS, AND APPURTENANT DRAINAGE ITEMS SO AS NOT TO CONFLICT WITH THE PROGRESSIVE ROADWAY CONSTRUCTION STAGES AND TRAFFIC MOVEMENTS OF THE IMPROVEMENT. THE CONTRACTOR SHALL MAINTAIN DRAINAGE AT ALL TIMES DURING THE VARIOUS STAGES OF CONSTRUCTION, AND PONDING OF WATER ON THE ROADWAY WILL NOT BE ALLOWED.

THE HEIGHT OF BARRICADES IN EXCAVATED AREAS ADJACENT TO NEW OR EXISTING PAVEMENT SHALL BE EXTENDED BY A HEIGHT EQUAL TO THE DEPTH OF THE EXCAVATION AT THE EDGE OF PAVEMENT SO AS TO MAINTAIN THE HEIGHT SHOWN ON THE STANDARD 701901.

THE CONTRACTOR SHALL ORGANIZE THE CONSTRUCTION ACTIVITIES SO THAT CONSTRUCTION PROCEEDS IN AN EXPEDITIOUS MANNER AT CROSSROADS AND ENTRANCES IN ORDER THAT CLOSURES AND ADVERSE TRAVEL PERIODS ARE MINIMIZED.

PLAN	DATE
NOTE BOOK NO.	
SURVEYED	BY
ALIGNED	
CHECKED	
FILED	



**CONSTRUCTION STAGING AND MAINTENANCE OF TRAFFIC**

**STAGE 1A**

MAINTAIN NORTHBOUND AND SOUTHBOUND TRAFFIC ON THE EXISTING SOUTHBOUND US 67 CONNECTION. CONSTRUCT THE PROPOSED FAP 310 NORTHBOUND LANES. SOUTHBOUND LANES THAT DO NOT INTERFERE WITH THE MAINTENANCE OF TRAFFIC MAY BE CONSTRUCTED AT THIS TIME ALSO.

1. THE CONSTRUCTION OF CROSSOVERS "A" AND "B" AT STATION 328+00± SHALL BE COMPLETED PRIOR TO REROUTING NORTHBOUND TRAFFIC. DURING CONSTRUCTION OF THE TEMPORARY CROSSOVERS, TRAFFIC SHALL BE MAINTAINED IN ACCORDANCE WITH THE APPLICABLE PORTIONS OF TRAFFIC CONTROL AND PROTECTION STANDARD 701101. AFTER REROUTING THE NORTHBOUND TRAFFIC, IT SHALL BE MAINTAINED ON CROSSOVER "A" AND US 67 CONNECTION IN ACCORDANCE WITH THE APPLICABLE PORTIONS OF TRAFFIC CONTROL AND PROTECTION STANDARDS 701331, 701400, AND 701416. TEMPORARY CONCRETE BARRIER WILL NOT BE REQUIRED.

**LEGEND**

- TEMPORARY PAVEMENT
- WORK ZONE STAGE 1A
- DIRECTION OF TRAFFIC
- TYPE III BARRICADES

REV. 7-20-2020

REVISIONS	
NAME	DATE
	7/20/20

ILLINOIS DEPARTMENT OF TRANSPORTATION  
**MAINTENANCE OF TRAFFIC**  
**STAGE 1**  
 FAP ROUTE 310 (US 67)  
 SECTION 42-2  
 JERSEY COUNTY

DESIGNED BY: WTS  
 CHECKED BY: GLF

DRAWN BY: EMR  
 CHECKED BY: WTS