

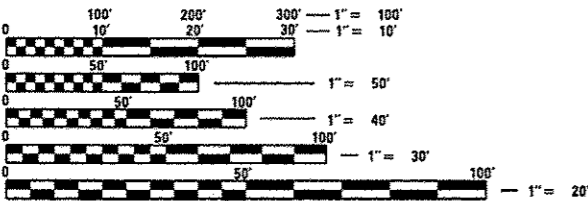
INDEX OF SHEETS

- 1 COVER SHEET /INDEX OF SHEETS /HIGHWAY STANDARDS
- 2 COMMITMENTS AND GENERAL /PROJECT SPECIFIC NOTES
- 3-5 SUMMARY OF QUANTITIES
- 6 TYPICAL SECTIONS
- 7 SCHEDULE OF QUANTITIES
- 8-11 PLAN
- 12-14 TRAFFIC PLAN
- 15 INLET G-1, G-1 SPECIAL FRAME AND GRATE DIST. STD.
- 16 INLET G-1 DIST. STD.

HIGHWAY STANDARDS

420001 - 08  
606001 - 06  
701427 - 03  
701601 - 09  
701606 - 10  
701901 - 04  
780001 - 05

ADT = 18,500  
MU = 550  
SU = 625



FULL SIZE PLANS HAVE BEEN PREPARED USING STANDARD ENGINEERING SCALES. REDUCED SIZED PLANS WILL NOT CONFORM TO STANDARD SCALES. IN MAKING MEASUREMENTS ON REDUCED PLANS, THE ABOVE SCALES MAY BE USED.

J.U.L.I.E.  
JOINT UTILITY LOCATION INFORMATION FOR EXCAVATION  
1-800-892-0123  
OR 811

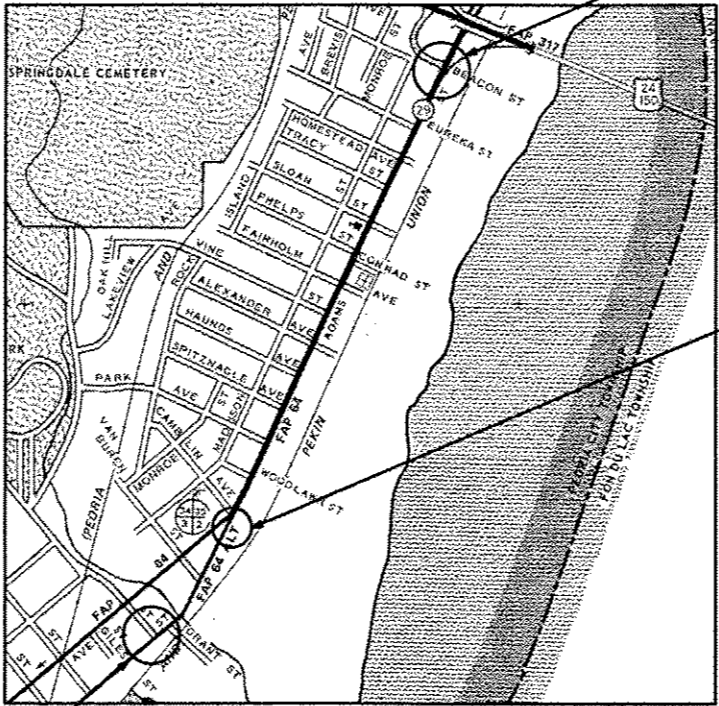
PROJECT ENGINEER: RICH DOTSON (309) 671-3455  
DESIGN ENGINEER: MIKE JACOBS (309) 671-3474  
CONTRACT NO. 68C06  
CATALOG NO. 035144-00

STATE OF ILLINOIS  
DEPARTMENT OF TRANSPORTATION  
DIVISION OF HIGHWAYS  
**PROPOSED  
HIGHWAY PLANS**

FAP ROUTE 64 (IL 29)  
SECTION (1-Z)I, RS-1; (58-1CS)I,RS-2  
PEORIA COUNTY  
C-94-105-14

T 9 N

R 8 E



END PROJECT  
STA: 49+00

STATION EQUATION  
80+00 (BK) = 0+00 (AH)

BEGIN PROJECT  
STA. 66+20

GROSS LENGTH = 6280 FT. = 1.19 MILE  
NET LENGTH = 6280 FT. = 1.19 MILE

F.A.P. RTE.	SECTION	COUNTY	TOTAL SHEETS	SHEET NO.
64	(1-Z)I,RS-1; (58-1 CS)I,RS-2	PEORIA	16	1
ILLINOIS CONTRACT NO. 68C06				

D-94-048-14



PROJECT DESCRIPTION:  
PARTIAL DEPTH PATCHING AND INTERMITTENT HMA SURFACE FROM THE "Y" AT JEFFERSON STREET AND ADAMS TO SOUTH OF US 150.

STATE OF ILLINOIS  
DEPARTMENT OF TRANSPORTATION  
DIVISION OF HIGHWAYS  
SUBMITTED May 15 2015  
Harold C. Gaudin  
DEPUTY DIRECTOR OF HIGHWAYS, REGION ENGINEER  
June 26 2015  
John D. Baranowski, P.E.  
ENGINEER OF DESIGN AND ENVIRONMENT  
June 26 2015  
Omer Osman, P.E.  
DIRECTOR OF HIGHWAYS, CHIEF ENGINEER

PRINTED BY THE AUTHORITY  
OF THE STATE OF ILLINOIS

# GENERAL NOTES

## 107.00 COMMITMENTS

Commitments are not to be altered without the written approval of all parties to which the commitment was made.

## 107.09 PROPERTY OWNER ACCESS REQUIREMENTS

Access must be maintained to all existing properties during construction per Article 107.09 unless arrangements are made in writing by the Contractor with the property owners with a copy to the Engineer for short-term closures.

### 107.09A CONSECUTIVE SIDE STREET (ROAD) CLOSURE – PROHIBITED

1. No two consecutive side streets (roads) may be closed at the same time during construction. The Contractor must alternate streets (roads).
2. Adjacent side roads will not be closed simultaneously. BLR Standard 21 shall be used for all local road closures without any entrances within the closed area. BLR Standard 22 can be used where it is necessary to allow local traffic access.

## 204.00 ENVIRONMENTAL REVIEWS

Prior to the use of any proposed borrow areas, use areas (temporary access roads, detours, run-arounds, etc.) and/or waste areas, the Contractor shall file the required environmental resource request surveys according to Section 107.22 of the Standard Specifications. These surveys are required in order for the Department to conduct cultural and biological resource surveys for the proposed site.

The required environmental resource documentation shall include the following:

- \*BDE Form 2289 (Environmental Survey Request)
- \*BDE Form 2290 (Waste/Use Area Review)
- \*A location map showing the size limits and location of the use area
- \*Color photographs depicting the use area
- \*Borrow Area Entry Agreement form–D4 PI0101

Prior to any waste materials being removed from the construction site the required environmental resource surveys will need to be obtained and filed by the Contractor. Excess waste products removed from the construction site shall be disposed of as required in Section 202.03 of the Standard Specifications.

Any protruding metal bars shall be removed prior to the disposal of broken concrete at approved disposal sites.

Please note that a minimum of four weeks shall be allowed for the District to obtain the required environmental clearances and six weeks for the required borrow site environmental clearances.

## 406.10 HOT-MIX ASPHALT MIXTURE REQUIREMENTS

Mixture Use(s):	POLY HMA SURF /PART DEP PATCH
RAP % (Max):	10% MAX
AC/PC:	SBS or SBR 76-22
Design Air Voids:	4.0% at N=50
Mixture Composition:	IL 9.5 OR 12.5
(Gradation Mixture)	
Friction Aggregate	MIX E

Notes: Individual lift thickness of each mix type will be no less than 3 times nominal maximum aggregate size and no more than 6 times nominal aggregate size.

## 406.18 BUTT JOINT CUTTING TIME RESTRICTION

Butt joints shall not be milled more than three (3) days prior to placement of the HMA surface course.

## 406.19 PAVING SURFACE COURSE

Continuous paving operations on the main roadway shall be maintained at all times during the construction of the hot-mix asphalt surface. No interruptions for side roads, entrances, turn lanes, etc. will be allowed.

FILE NAME = 68C06 121.dgn	USER NAME = keshibor	DESIGNED -	REVISED -	STATE OF ILLINOIS DEPARTMENT OF TRANSPORTATION	GENERAL /PROJECT SPECIFIC NOTES	F.A.P RTE.	SECTION	COUNTY	TOTAL SHEETS	SHEET NO.					
		DRAWN -	REVISED -				64 (1-2),RS-1; (58-1) CS1,RS-2	PEORIA	16	2					
	PLOT SCALE = 100.0000' / 1" =	CHECKED -	REVISED -												
	PLOT DATE = 5/15/2015	DATE -	REVISED -												
						SCALE:	SHEET NO.	OF	SHEETS	STA.	TO STA.	ILLINOIS FED. AID PROJECT			
											CONTRACT NO. 68C06				

CODE NO.	ITEM	UNIT	TOTAL QUANTITY	CONST. CODE	CONST. CODE
				PEORIA COUNTY	PEORIA COUNTY
				100% STATE	100% STATE
				0005	0021
40600982	HOT - MIX ASPHALT SURFACE REMOVAL - BUTT JOINT	SQ YD	693	693	
40603560	POLYMERIZED HOT - MIX ASPHALT SURFACE COURSE, MIX "E", NS0	TON	690	690	
44000155	HOT - MIX ASPHALT SURFACE REMOVAL, 1 1/2"	SQ YD	7569	7569	
44000100	PAVEMENT REMOVAL	SQ YD	219	219	
44000300	CURB REMOVAL	FOOT	985	985	
44000600	SIDEWALK REMOVAL	SQ FT	2955	2955	
44213204	TIE BARS 3/4"	EACH	493	493	
60255500	MANHOLES TO BE ADJUSTED	EACH	2	2	
60255800	MANHOLES TO BE ADJUSTED WITH NEW TYPE 1 FRAME, CLOSED LID	EACH	2	2	
60255905	MANHOLES TO BE ADJUSTED WITH NEW TYPE 3V FRAME AND GRATE	EACH	1	1	
60260100	INLETS TO BE ADJUSTED	EACH	1	1	
6060500	COMBINATION CONCRETE CURB AND GUTTER, TYPE B-6.24	FOOT	933	933	
67100100	MOBILIZATION	L SUM	1	1	
70102625	TRAFFIC CONTROL AND PROTECTION, STANDARD 701606	L SUM	1	1	

CODE NO.	ITEM	UNIT	TOTAL QUANTITY	CONST. CODE	CONST. CODE
				PEORIA COUNTY	PEORIA COUNTY
				100% STATE	100% STATE
				0005	0021
70102630	TRAFFIC CONTROL AND PROTECTION, STANDARD 701601	L SUM	1	1	
70106800	CHANGEABLE MESSAGE SIGN	CAL MO	2	2	
70300100	SHORT TERM PAVEMENT MARKING	FOOT	1884	1884	
70301000	WORK ZONE PAVEMENT MARKING REMOVAL	SQ FT	628	628	
* 78001100	PAINT PAVEMENT MARKING - LETTERS AND SYMBOLS	SQ FT	62.4	62.4	
* 78001110	PAINT PAVEMENT MARKING - LINE 4"	FOOT	25120	25120	
* 78001130	PAINT PAVEMENT MARKING - LINE 6"	FOOT	3241	3241	
* 78001140	PAINT PAVEMENT MARKING - LINE 8"	FOOT	520	520	
* 78001150	PAINT PAVEMENT MARKING - LINE 12"	FOOT	491	491	
* 78001180	PAINT PAVEMENT MARKING - LINE 24"	FOOT	117	117	
78300200	RAISED REFLECTIVE PAVEMENT MARKER REMOVAL	EACH	75	75	
* 88600100	DETECTOR LOOP, TYPE 1	FOOT	268		268
* X0326851	ADJUST EXISTING DETECTOR LOOP RISER	EACH	4		4
X0327296	TRACKLESS TACK	GAL	821	821	

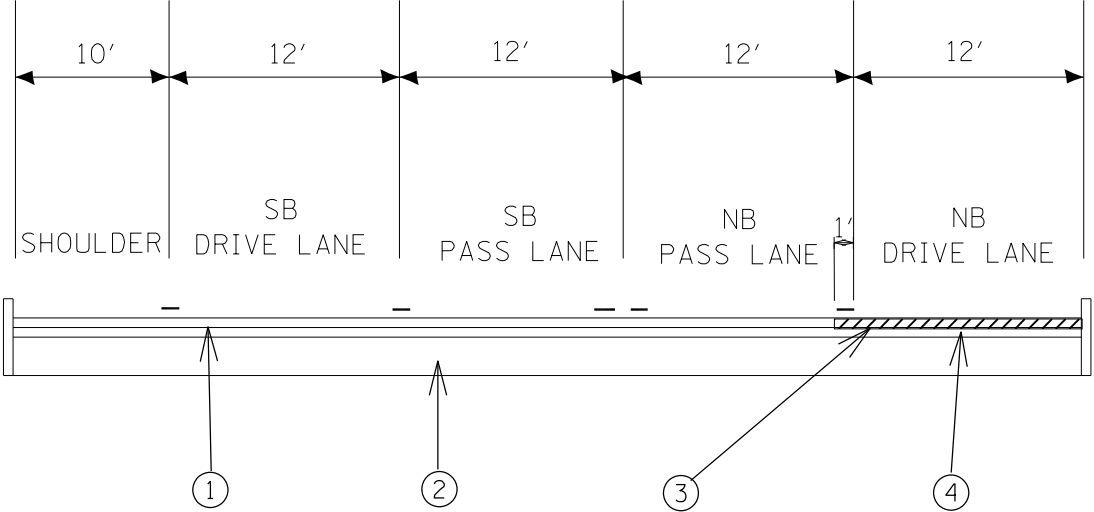
\* SPECIALTY ITEM

FILE NAME : 68C06 121.dgn	USER NAME : kashbr	DESIGNED -	REVISED -	STATE OF ILLINOIS DEPARTMENT OF TRANSPORTATION	SUMMARY OF QUANTITIES	F.A.P. RTE.	SECTION	COUNTY	TOTAL SHEETS	SHEET NO.
		DRAWN -	REVISED -			64	(1-2)1,RS-1; (58-1C\$)1,RS-2	PEORIA	16	4
	PLOT SCALE : 100.0000 / in.	CHECKED -	REVISED -			CONTRACT NO. 68C06				
	PLOT DATE : 5/15/2015	DATE -	REVISED -			ILLINOIS FED. AID PROJECT				

6500 0000

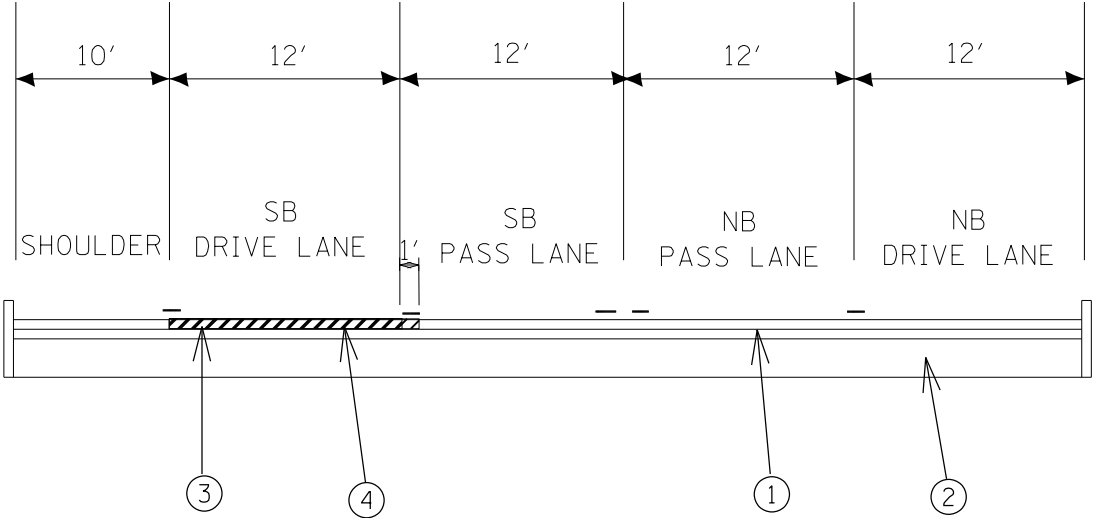
[illegible]

FILE NAME : 68C06 121.dgn	USER NAME = kaithb-	DESIGNED -	REVISED -	STATE OF ILLINOIS DEPARTMENT OF TRANSPORTATION	SUMMARY OF QUANTITIES	F.A.P. RTE.	SECTION	COUNTY	TOTAL SHEETS	SHEET NO.
		DRAWN -	REVISED -			64	(1-2)I.RS-1; (58-1)CSH.RS-2	PEORIA	16	5
	PLOT SCALE = 100.0000' / IN	CHECKED -	REVISED -			CONTRACT NO. 68C06				
	PLOT DATE = 5/15/2015	DATE -	REVISED -			ILLINOIS FED. AID PROJECT				

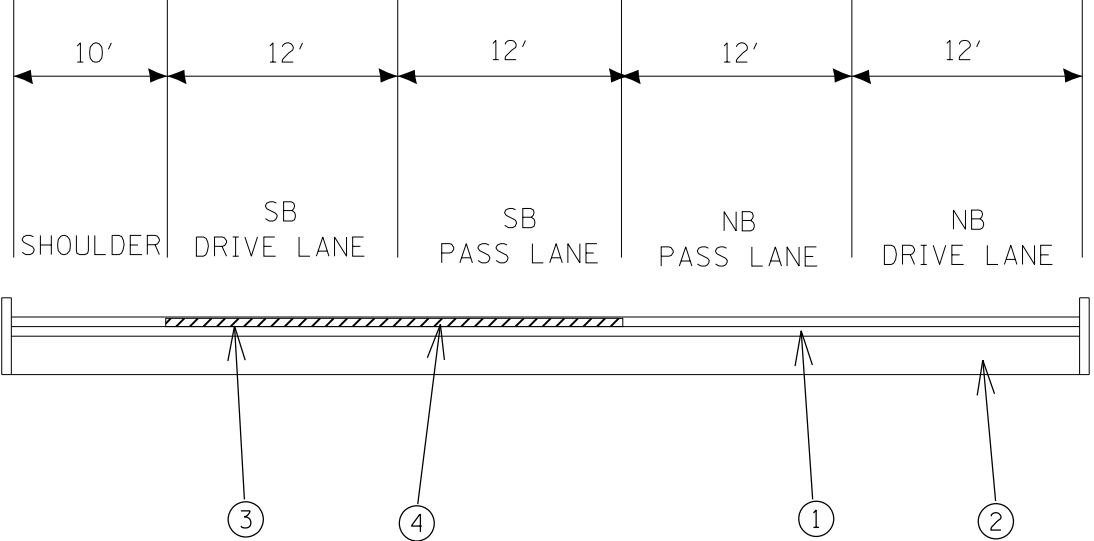


- LEGEND
- ① EXISTING HMA OVERLAYS (APPROX. 3'')
  - ② EXISTING EXISTING PCC PAVEMENT
  - ③ PROPOSED HMA SURF REMOVAL, 1.5''
  - ④ PROPOSED POLYMER HMA SURFACE COURSE, 1.5''

IL 29 (LOOKING NORTH)  
STA 66+20 - STA 19+00  
STA 22+00 - STA 25+00  
STA 34+00 - STA 49+00



IL 29 (LOOKING NORTH)  
STA 20+00 - STA 22+00



IL 29 (LOOKING NORTH)  
STA 10+00 - 2+00

LOCATION	TRACKLESS TACK	HMA SC "E" N50	MAT XFER DEV	HMA SURF REM 1.5"	HMA SURF REM (BUTT JT)
	(GALLON)	(TON)	(TON)	(SQ YD)	(SQ YD)
NB DL 66+20-76+20	144.44	121.33	121.33	1364.44	86.67
NB DL 76+20-19+00	329.33	276.64	276.64	3213.33	86.67
NB DL 22+00-25+00	43.33	36.40	36.40	353.33	86.67
NB DL 34+00-40+50	93.89	78.87	78.87	858.89	86.67
NB DL 40+00-49+50	122.78	103.13	103.13	1147.78	86.67
SB DL 20+00-22+00	28.89	24.27	24.27	208.89	86.67
SB FL 10+00- 2+00	29.11	24.45	24.45	211.06	86.67
SB DL 10+00- 2+00	29.11	24.45	24.45	211.06	86.67
<b>TOTAL:</b>	<b>820.9</b>	<b>820.9</b>	<b>689.5</b>	<b>7568.8</b>	<b>693.3</b>

LOCATION	PT PVMT MK L&S (WHITE)	PT PVMT MK 4" (WHITE & YELLOW)	PT PVMT MK 6"(WHITE)	PT PVMT MK 8" (WHITE)	PT PVMT MK 12" (YELLOW)	PT PVMT MK 24" (WHITE)
	(SQ FT)	(FT)	(FT)	(FT)	(FT)	(FT)
STA 78+80	15.6					
STA 79+80	15.6					
STA 46+36	15.6					
STA 48+14	15.6					
STA 66+20 -STA 49+00		12560(W) / 12560 (Y)	3241.0			
STA 78+75-STA 80+00				125.0		
STA 46+36 - STA 50+31				395.0		
STA 0+00 - STA 0+60					260.0	
STA 45+44 - STA 48+96					231.0	
ALEXANDER ST INTERSECTION						69.0
SLOAN ST INTERSECTION						48.0
<b>TOTAL:</b>	<b>62.4</b>	<b>25120.0</b>	<b>3241.0</b>	<b>520.0</b>	<b>491.0</b>	<b>117.0</b>

LOCATION	TR CONT & PROT 701606	TR CONT & PROT 701601	CHANGEABLE MESSAGE SN
	(L SUM)	(L SUM)	(CAL MO)
IL 29	1.0	1.0	2.0
<b>TOTAL:</b>	<b>1.0</b>	<b>1.0</b>	<b>2.0</b>

LOCATION	PART DEPTH PATCH SPL	PART DEPTH PATCH
	(SQ YD)	(TON)
IL 29	2900.0	650.0
TOTAL:	2900.0	650.0

LOCATION	SHORT TERM PM	WZ PM REMOVAL
	(FOOT)	(SQ FT)
IL 29	1884.0	628.0
<b>TOTAL:</b>	1884.0	628.0

RAISED REFLECTIVE PAVEMENT MARKER REMOVAL		
LOCATION	UNIT	QUANTITY
FROM RT. STA 66+20 TO RT. STA 49+00	EACH	75

SIDEWALK REMOVAL		
LOCATION	UNIT	QUANTITY
FROM RT. STA 2+48 TO RT. STA 12+33	SQ FT	2955

NOTE: EXISTING SIDEWALK REMOVAL IS LOCATED BEHIND EXISTING CURB  
REMOVAL AND AT PROPOSED COMB CC&G TY B-6.24 TIE-INS TO EXISTING  
MONOLITHIC CURB AND SIDEWALK.

DETECTOR LOOP AND DETECTOR ASSIGNMENT SCHEDULE IL 29 (ADAMS) & SLOAN				
DETECTOR LOOP	TYPE	DETECTOR LOOP QTY.	DETECTOR LEAD-IN QTY.	ASSIGNED PHASE
D-2A	IL 29 (NB) - 6' X 6' (PROP.)	24	4	2
D-2B	IL 29 (NB) - 6' X 6' (PROP.)	24	15	2
D-4	SLOAN (EB) - 6' X 50' QUAD (EX.)			4
D-6A	IL 29 (SB) - 6' X 6' (PROP.)	24	4	2
D-6B	IL 29 (SB) - 6' X 6' (PROP.)	24	15	2
D-8	SLOAN (WB) - 6' X 50' QUAD (EX.)			8
<b>TOTAL:</b>		<b>96</b>	<b>38</b>	

DETECTOR LOOP AND DETECTOR ASSIGNMENT SCHEDULE IL 29 (ADAMS) & ALEXANDER				
DETECTOR LOOP	TYPE	DETECTOR LOOP QTY.	DETECTOR LEAD-IN QTY.	ASSIGNED PHASE
D-2A	IL 29 (NB) - 6' X 6' (PROP.)	24	4	2
D-2B	IL 29 (NB) - 6' X 6' (PROP.)	24	15	2
D-4	ALEXANDER (EB) - 6' X 50' QUAD (EX.)			4
D-6A	IL 29 (SB) - 6' X 6' (PROP.)	24	4	2
D-6B	IL 29 (SB) - 6' X 6' (PROP.)	24	15	2
D-8	ALEXANDER (WB) - 6' X 50' QUAD (EX.)			8
<b>TOTAL:</b>		<b>96</b>	<b>38</b>	

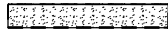
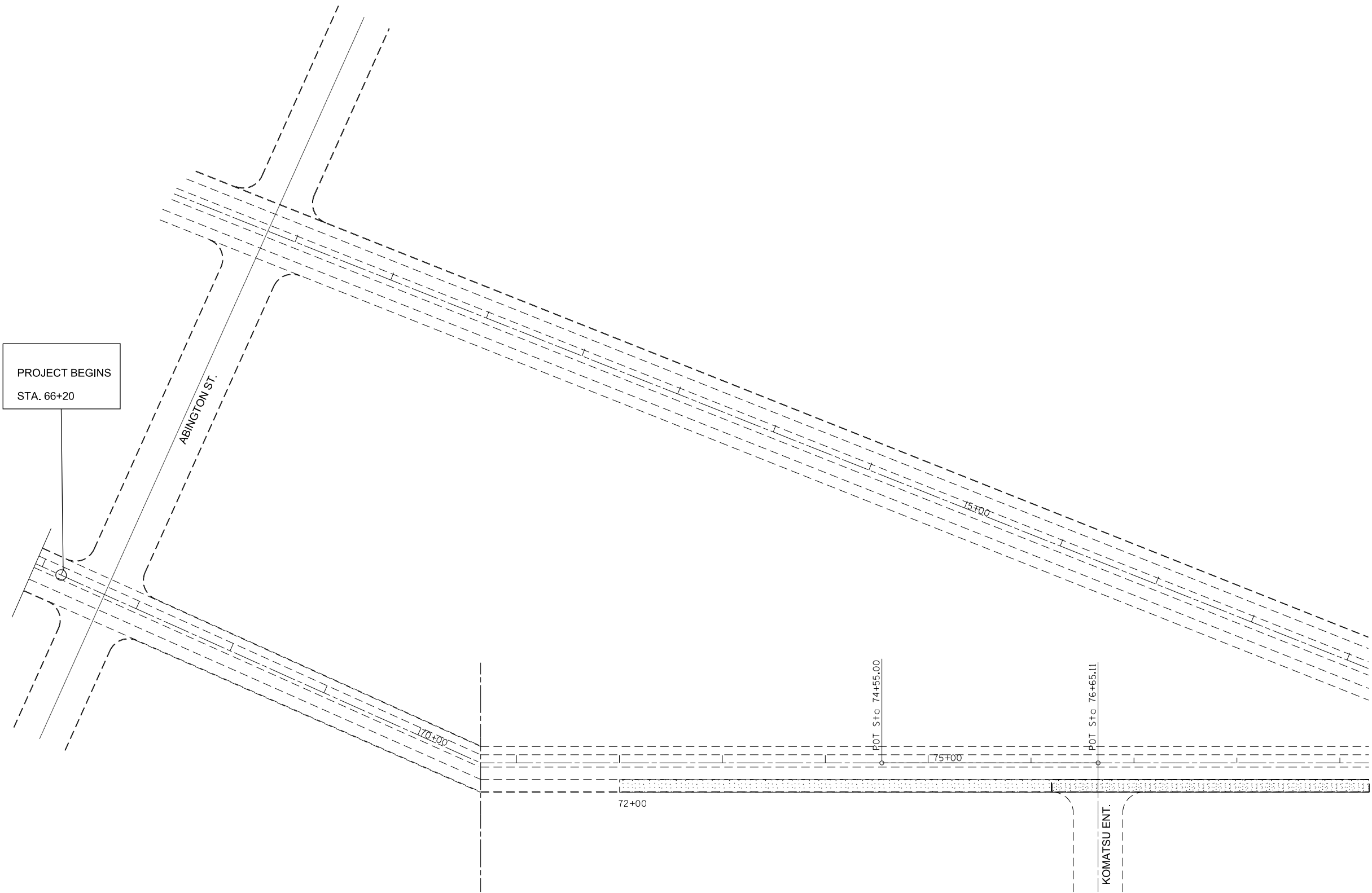
DRAINAGE SCHEDULE		
RT. STA. 3+28	INLET	INLETS ADJUST
RT. STA. 3+55	SS MH	MAN ADJ NEW T1FCL
RT. STA. 4+33	SS INLET MH	MAN ADJ NEW T3F&G
RT. STA. 7+98	INLET	INLETS ADJUST
RT. STA. 8+12	SS MH	MAN ADJUST
RT. STA. 9+77		REPAIR IN ACCORDANCE WITH ART. 109.04
RT. STA. 11+85	INLET	MAN ADJ NEW T3F&G
RT. STA. 11+97	SS MH	MAN ADJUST
RT. STA. 12+19	SS MH	MAN ADJ NEW T1FCL

CURB REMOVAL		
LOCATION	UNIT	QUANTITY
FROM RT. STA 2+48 TO RT. STA 12+33	FOOT	985

COMBINATION CONCRETE CURB AND GUTTER B-6.24		
LOCATION	UNIT	QUANTITY
FROM RT. STA 2+48 TO RT. STA 12+33	FOOT	933

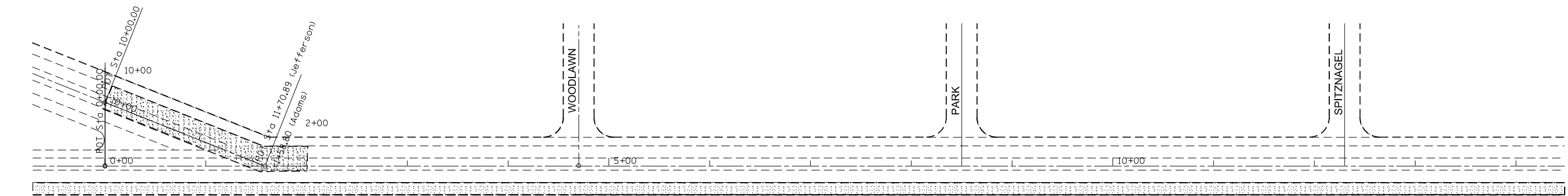
PAVEMENT REMOVAL		
LOCATION	UNIT	QUANTITY
FROM RT. STA 2+48 TO RT. STA 12+33	SQ YD	219

FILE NAME = 68C06 (2).dgn	USER NAME = keithbr	DESIGNED -	REVISED -	STATE OF ILLINOIS DEPARTMENT OF TRANSPORTATION	SCHEDULE OF QUANTITIES	F.A.P. RTE.	SECTION	COUNTY	TOTAL SHEETS	SHEET NO.
		DRAWN -	REVISED -			64	(1-Z)I,RS-1; (58-1C)I,RS-2	PEORIA	16	7
	PLOT SCALE = 100.0000' / in.	CHECKED -	REVISED -			CONTRACT NO. 68C06				
	PLOT DATE = 5/15/2015	DATE -	REVISED -			ILLINOIS FED. AID PROJECT				

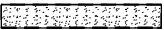
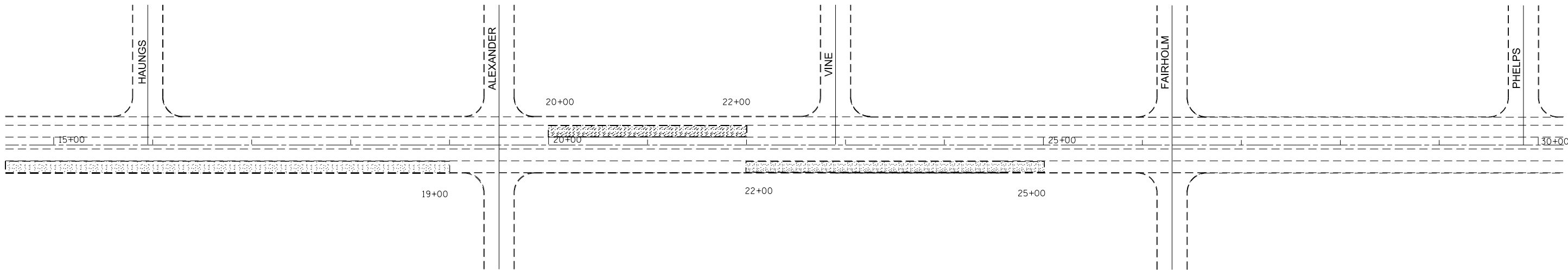


POLYMERIZED HMA SURFACE COURSE  
HMA SURFACE REMOVAL 1.5"

FILE NAME = 68C06 (2).dgn  Default	USER NAME = keithbr	DESIGNED -	REVISED -	STATE OF ILLINOIS DEPARTMENT OF TRANSPORTATION	PROPOSED PLAN ABINGTON TO KOMATSU ENTRANCE			F.A. RTE.	SECTION	COUNTY	TOTAL SHEETS	SHEET NO.
		DRAWN -	REVISED -					64	(1-2)I,RS-1; (58-1CS)I,RS-2	PEORIA	16	8
	PLOT SCALE = 100.0000' / in.	CHECKED -	REVISED -					CONTRACT NO. 68C06				
	PLOT DATE = 5/15/2015	DATE -	REVISED -		SCALE:	SHEET	OF	SHEETS	STA.	TO STA.	ILLINOIS FED. AID PROJECT	

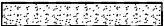
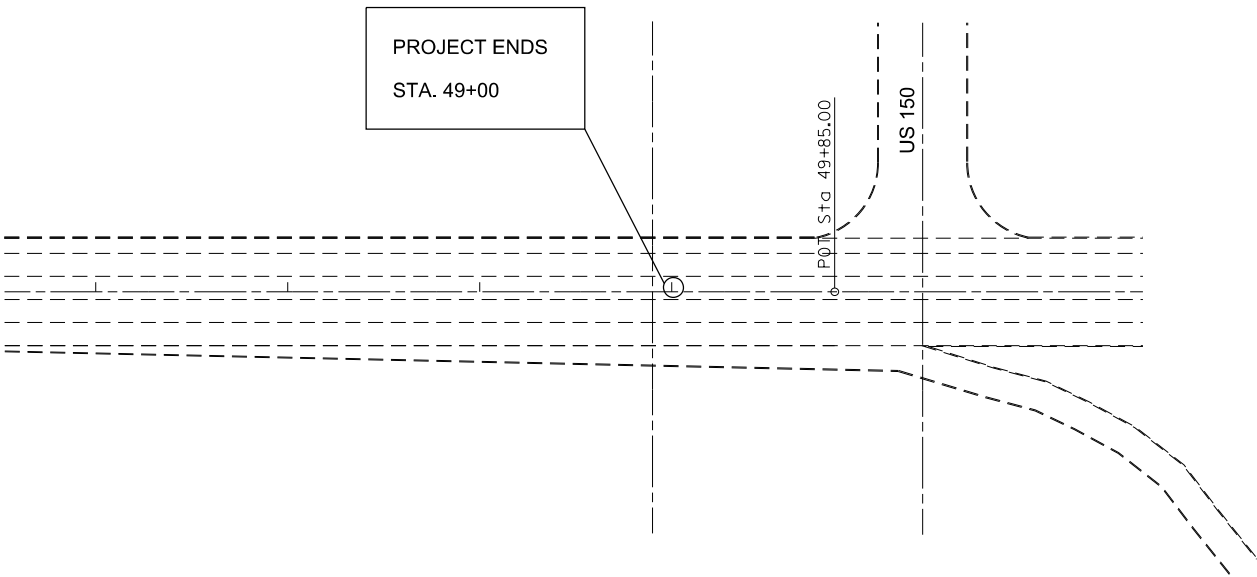
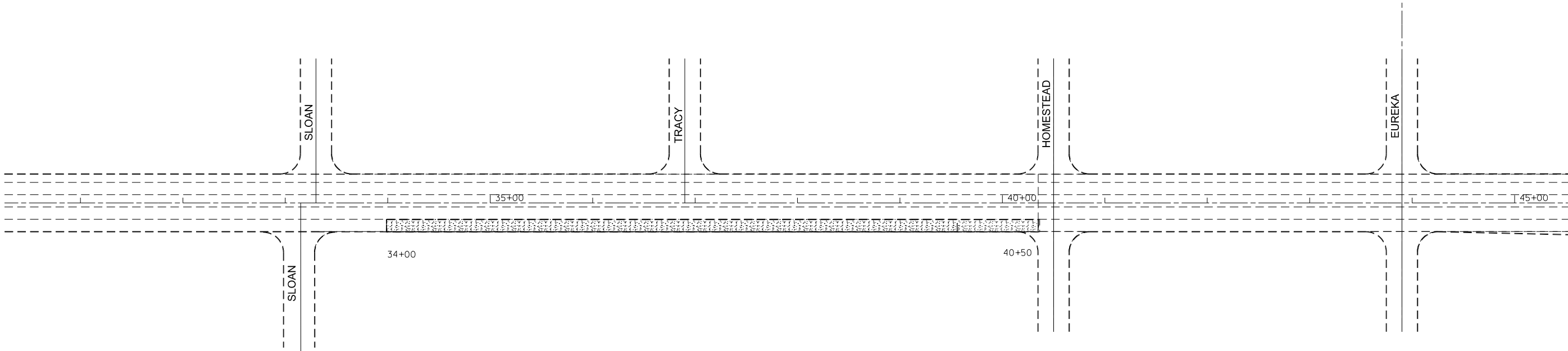


STATION EQUATION  
80+00 (BK) = 0+00 (AH)



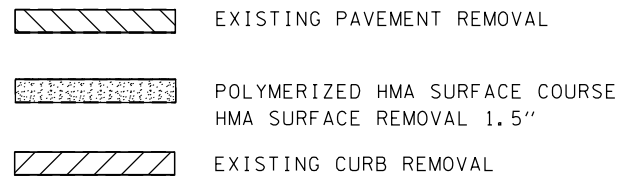
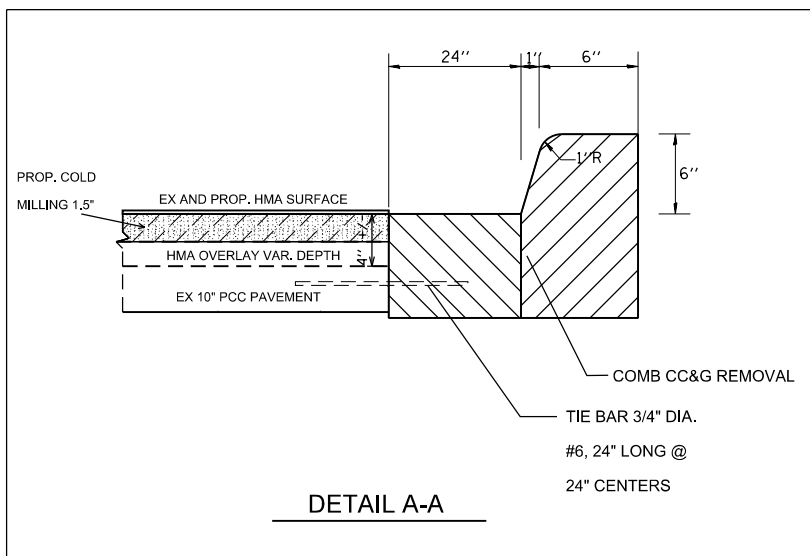
POLYMERIZED HMA SURFACE COURSE  
HMA SURFACE REMOVAL 1.5"

FILE NAME = 68C06 (2).dgn  Default	USER NAME = keithbr	DESIGNED -	REVISED -	STATE OF ILLINOIS DEPARTMENT OF TRANSPORTATION	PROPOSED PLAN WOODLAWN TO PHELPS				F.A. RTE.	SECTION	COUNTY	TOTAL SHEETS	SHEET NO.
	PLOT SCALE = 100.0000' / in.	DRAWN -	REVISED -						64	(1-2)I,RS-1; (58-1C)I,RS-2	PEORIA	16	9
	PLOT DATE = 5/15/2015	CHECKED -	REVISED -		SCALE: SHEET OF SHEETS STA. TO STA.				CONTRACT NO. 68C06				
		DATE -	REVISED -						ILLINOIS FED. AID PROJECT				



POLYMERIZED HMA SURFACE COURSE  
HMA SURFACE REMOVAL 1.5"

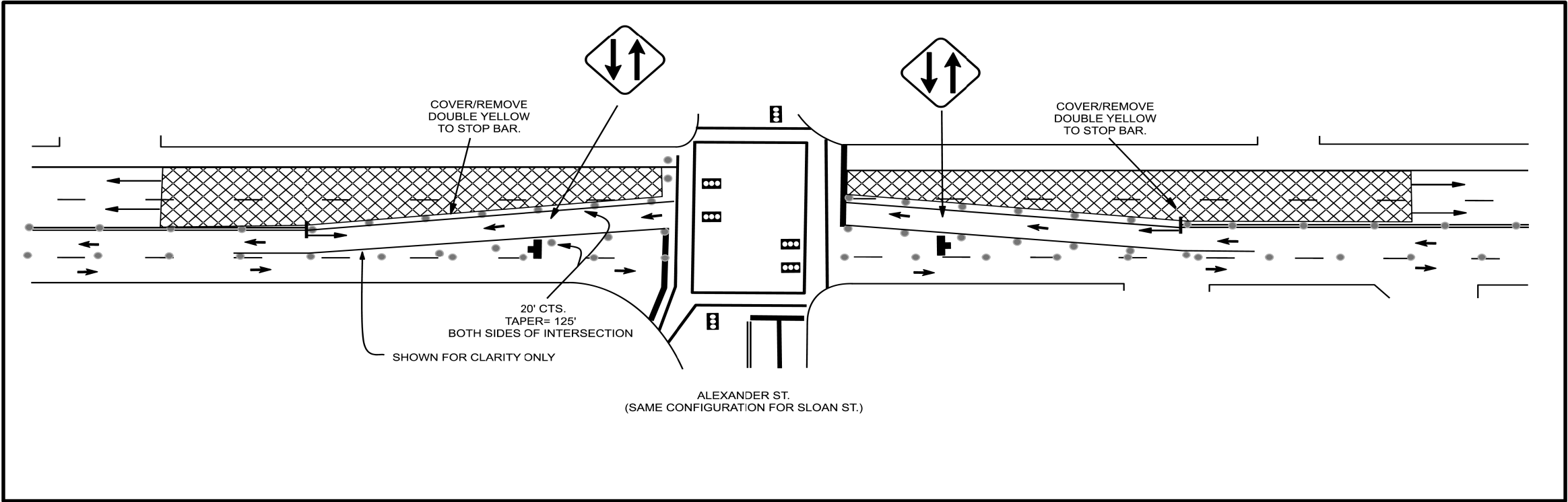
FILE NAME = 68C06 (2).dgn  Default	USER NAME = keithbr	DESIGNED -	REVISED -	STATE OF ILLINOIS DEPARTMENT OF TRANSPORTATION	PROPOSED PLAN SLOAN TO US 150			F.A. RTE.	SECTION	COUNTY	TOTAL SHEETS	SHEET NO.
		DRAWN -	REVISED -					64	(1-Z)1,RS-1; (58-1CS)1,RS-2	PEORIA	16	10
	PLOT SCALE = 100.0000' / in.	CHECKED -	REVISED -					CONTRACT NO. 68C06				
	PLOT DATE = 5/15/2015	DATE -	REVISED -		SCALE:	SHEET	OF	SHEETS	STA.	TO STA.	ILLINOIS FED. AID PROJECT	



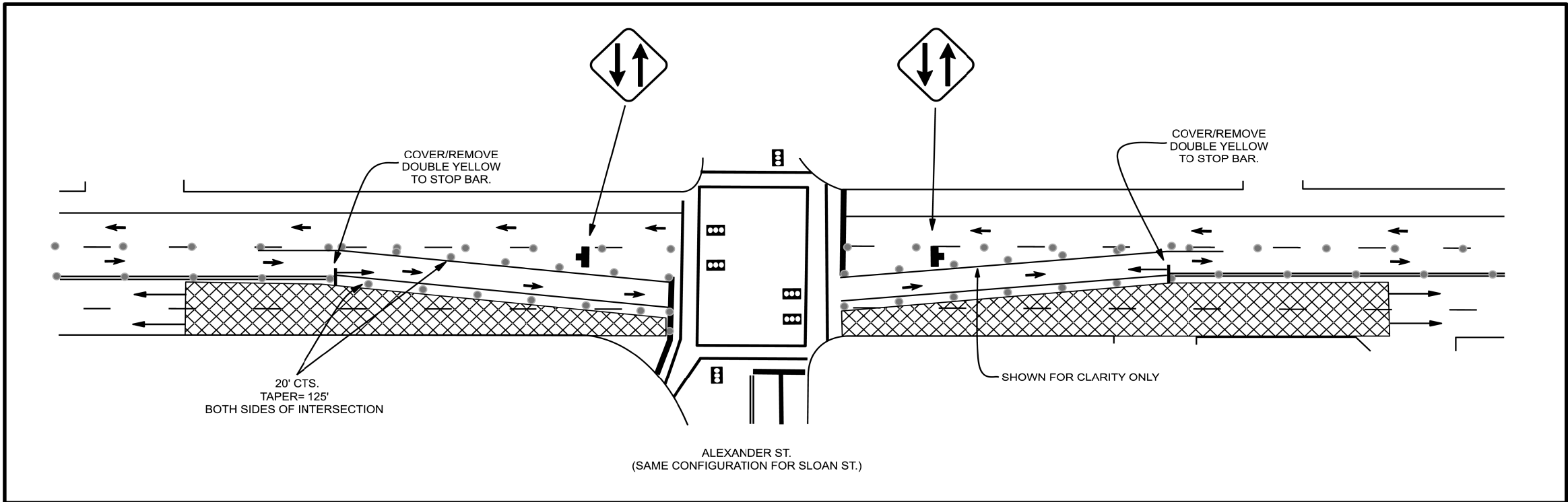
FILE NAME = 68C06 (2).dgn	USER NAME = kethbr	DESIGNED -	REVISED -	STATE OF ILLINOIS DEPARTMENT OF TRANSPORTATION	PROPOSED PLAN WOODLAWN TO SPITZNAGEL					F.A.P. RTE.	SECTION	COUNTY	TOTAL SHEETS	SHEET NO.
		DRAWN -	REVISED -							64	(1-Z),RS-1; (58-1C5),RS-2	PEORIA	16	11
	PLOT SCALE = 100.0000' / in.	CHECKED -	REVISED -		CONTRACT NO. 68C06									
	PLOT DATE = 5/15/2015	DATE -	REVISED -		SCALE:	SHEET NO.	OF	SHEETS	STA.	TO STA.	ILLINOIS FED. AID PROJECT			

DIAGRAM A

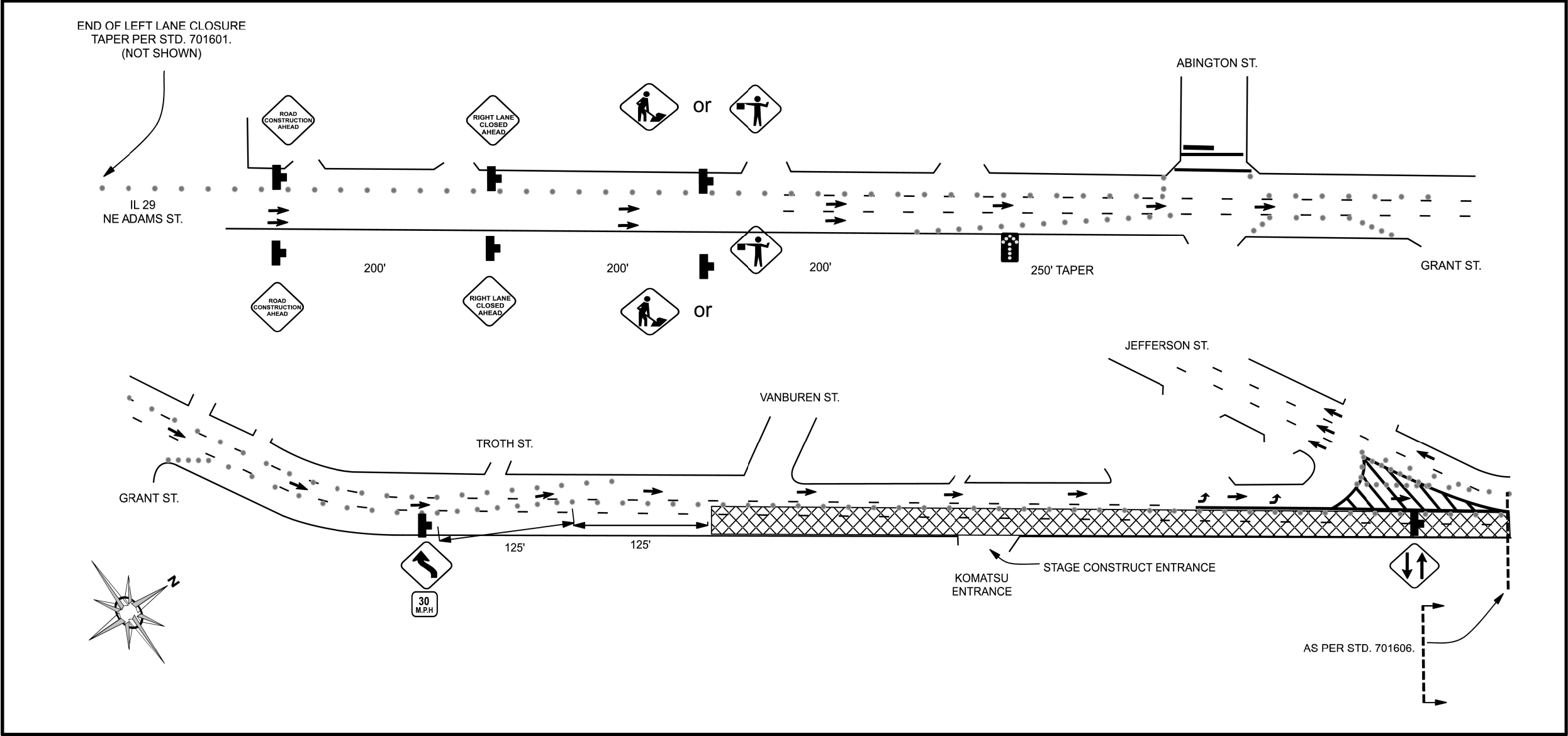
STAGE 1



STAGE 2



STAGE 1-NB IL 29 TRAFFIC CONTROL



GENERAL NOTES:

STD. 701606 SHALL BE USED IN CONJUNCTION WITH THE MODIFICATIONS SHOWN ON THE TRAFFIC CONTROL STAGING PLAN SHEETS INCLUDED HEREIN.

THE STAGING PLAN SHEETS ARE SHOWN FOR WHEN THE CONTRACTOR IS WORKING IN THE PASSING LANE OF EITHER DIRECTION. A SINGLE LANE CLOSURE IN THE PASSING LANE OF EITHER DIRECTION **SHALL NOT** BE ALLOWED.

SINGLE LANE DRIVING LANE CLOSURES SHALL BE ALLOWED PER STD. 701606. NB IL 29 LEFT LANE CLOSURE SHALL REMAIN OVERNIGHT FOR STAGE 1 ONLY.

"ROAD CONSTRUCTION AHEAD" SIGNS (A-FRAME OR OTHER APPROVED STAND) SHALL BE PLACED ON ALL SIDE ROADS FROM START TO END OF PROJECT. FLASHING LIGHT SHALL NOT BE REQUIRED.

WORKING RESTRICTIONS:

THE CONTRACTOR SHALL START EACH STAGE AT ALEXANDER ST. AND SLOAN ST. REMOVAL AND REPLACEMENT OF ANY TYPE SHALL BE COMPLETED BY DUSK WITHIN 125' OF THE INTERSECTION IN THE PASSING LANE. UPON COMPLETION, TRAFFIC STAGED IN THE OPPOSING PASSING LANE SHALL BE GUIDED TO THE ORIGINAL PASSING LANE (SEE DIAGRAM A).

PAUL GRANT ((309) 671-4474), TRAFFIC SIGNAL TECHNICIAN, SHALL BE NOTIFIED ONE WEEK IN ADVANCE OF CLOSURE TO EVALUATE SIGNAL TIMING ON THE DAY OF THE CLOSURES.



SIGN TO BE STAND MOUNTED 150' PRIOR TO SIGNALIZED INTERSECTIONS IN CLOSED LANE UNTIL TRAFFIC IS REDIRECTED PER DIAGRAM A.

● = CONES OR OTHER APPROVED DEVICES. SPACING AS PER STD. 701606.

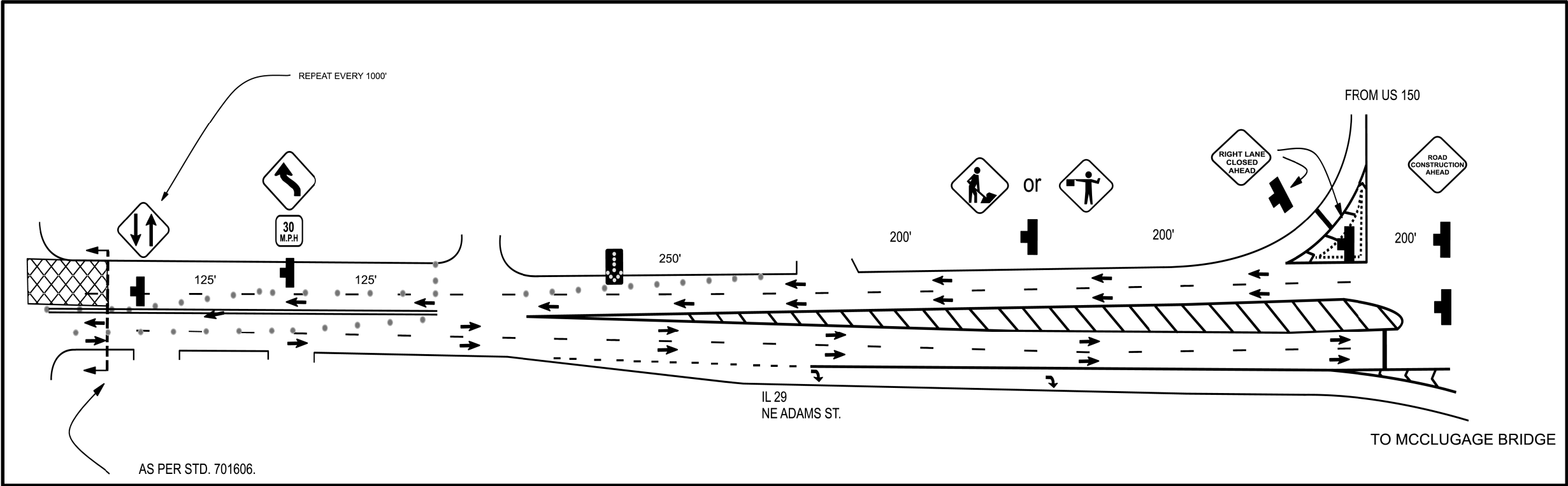
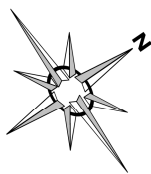
TRAFFIC CONTROL STAGING PLAN

THE PROJECT SHALL BE DONE IN TWO (2) STAGES: NB & SB

CENTERLINE REMOVAL AND REPLACEMENT (TEMPORARY) SHALL BE INCIDENTAL TO STD. 701606.

FILE NAME = 68C06 (2).dgn	USER NAME = keithbr		DESIGNED -	REVISED -	STATE OF ILLINOIS DEPARTMENT OF TRANSPORTATION	STAGE I TRAFFIC PLAN				F.A.P. RTE.	SECTION	COUNTY	TOTAL SHEETS	SHEET NO.
	DRAWN -		CHECKED -	REVISED -						64	(1-2)1,RS-1; (58-1CS)1,RS-2	PEORIA	16	13
	PLOT SCALE = 100.0000' / 1in.		DATE -	REVISED -		SCALE: SHEET NO. OF SHEETS STA. TO STA.				CONTRACT NO. 68C06				
	PLOT DATE = 5/15/2015									ILLINOIS FED. AID PROJECT				

STAGE 2-SB IL 29 TRAFFIC CONTROL



GENERAL NOTES:

STD. 701606 SHALL BE USED IN CONJUNCTION WITH THE MODIFICATIONS SHOWN ON THE TRAFFIC CONTROL STAGING PLAN SHEETS INCLUDED HEREIN.

THE STAGING PLAN SHEETS ARE SHOWN FOR WHEN THE CONTRACTOR IS WORKING IN THE PASSING LANE OF EITHER DIRECTION. A SINGLE LANE CLOSURE IN THE PASSING LANE OF EITHER DIRECTION **SHALL NOT** BE ALLOWED.

SINGLE LANE DRIVING LANE CLOSURES SHALL BE ALLOWED PER STD. 701606.

NB IL 29 LEFT LANE CLOSURE SHALL REMAIN OVERNIGHT FOR STAGE 1 ONLY.

"ROAD CONSTRUCTION AHEAD" SIGNS (A-FRAME OR OTHER APPROVED STAND) SHALL BE PLACED ON ALL SIDE ROADS FROM START TO END OF PROJECT. FLASHING LIGHT SHALL NOT BE REQUIRED.

WORKING RESTRICTIONS:

THE CONTRACTOR SHALL START EACH STAGE AT ALEXANDER ST. AND SLOAN ST. REMOVAL AND REPLACEMENT OF ANY TYPE SHALL BE COMPLETED BY DUSK WITHIN 125' OF THE INTERSECTION IN THE PASSING LANE. UPON COMPLETION, TRAFFIC STAGED IN THE OPPOSING PASSING LANE SHALL BE GUIDED TO THE ORIGINAL PASSING LANE (SEE DIAGRAM A).

PAUL GRANT ((309) 671-4474), TRAFFIC SIGNAL TECHNICIAN, SHALL BE NOTIFIED ONE WEEK IN ADVANCE OF CLOSURE TO EVALUATE SIGNAL TIMING ON THE DAY OF THE CLOSURES.



SIGN TO BE STAND MOUNTED 150' PRIOR TO SIGNALIZED INTERSECTIONS IN CLOSED LANE UNTIL TRAFFIC IS REDIRECTED PER DIAGRAM A.

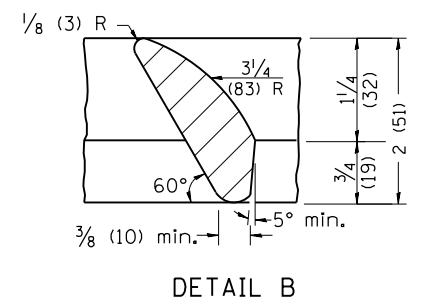
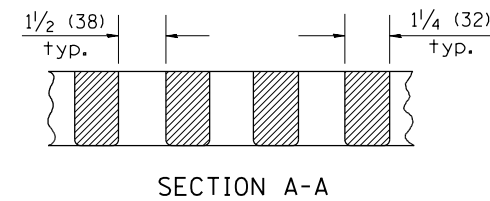
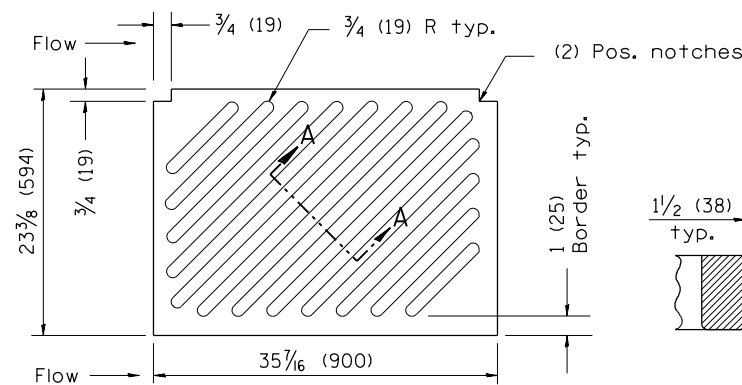
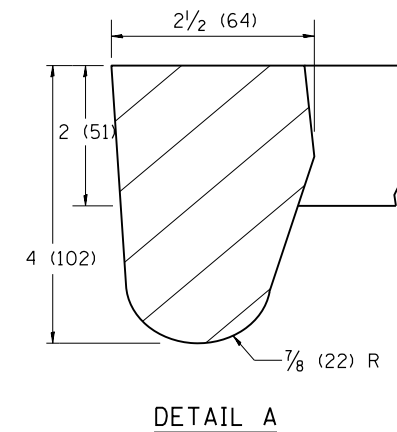
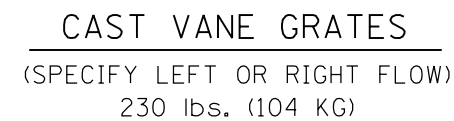
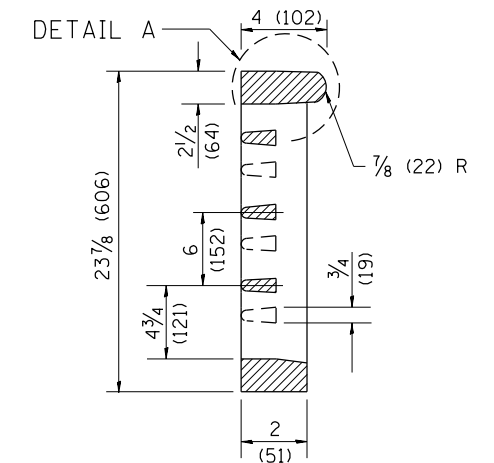
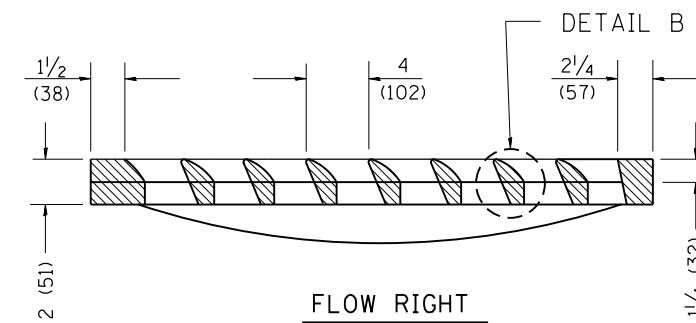
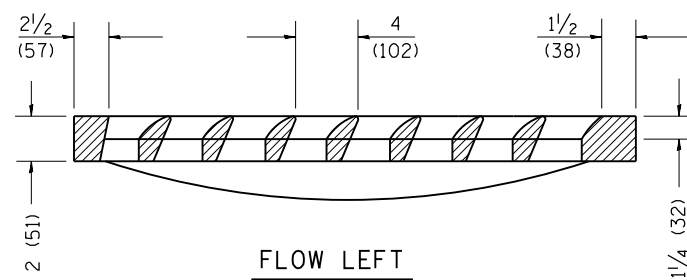
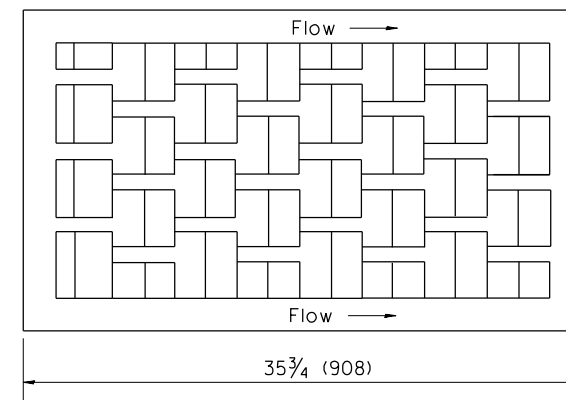
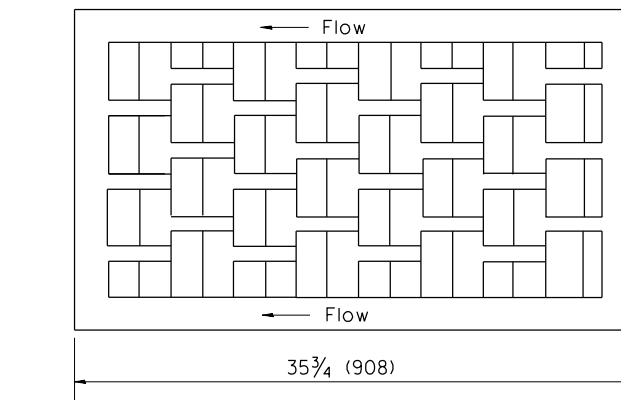
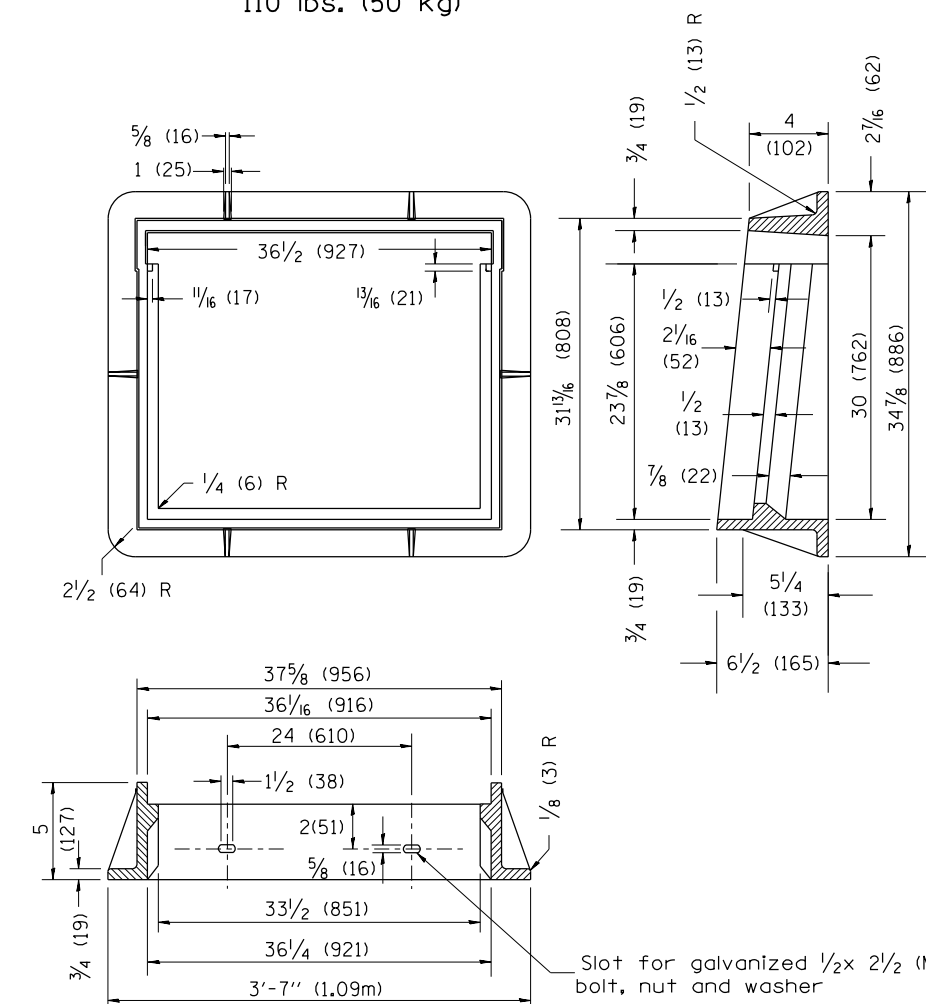
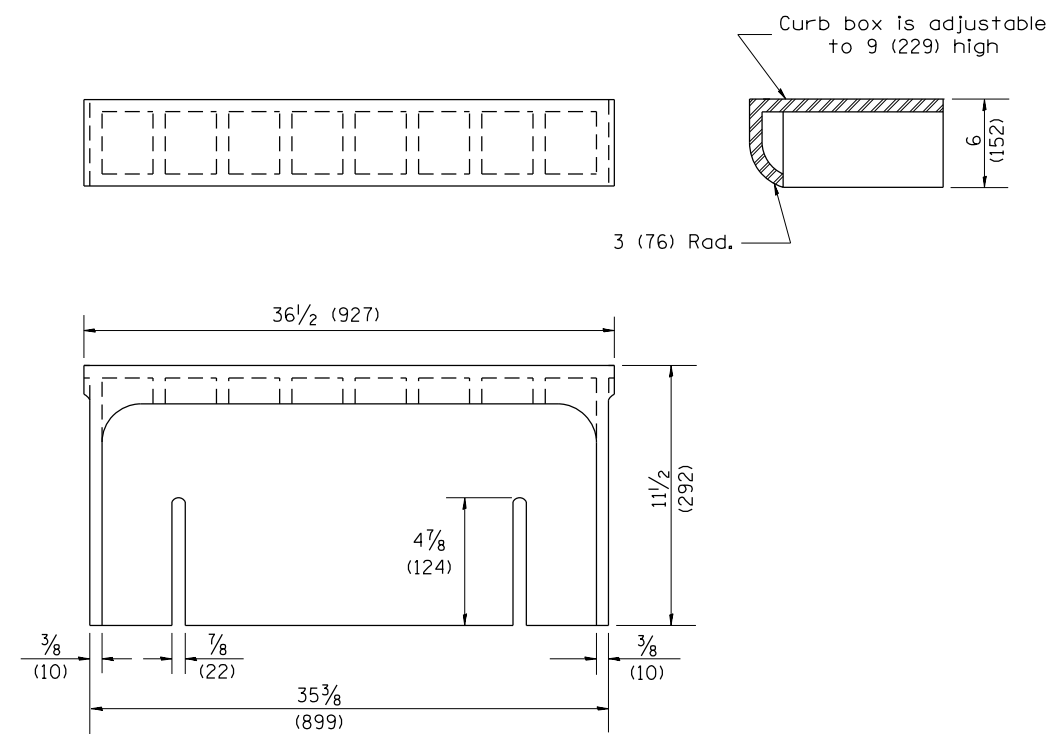
= CONES OR OTHER APPROVED DEVICES. SPACING AS PER STD. 701606.

TRAFFIC CONTROL STAGING PLAN

THE PROJECT SHALL BE DONE IN TWO (2) STAGES: NB & SB.

CENTERLINE REMOVAL AND REPLACEMENT (TEMPORARY) SHALL BE INCIDENTAL TO STD. 701606.

FILE NAME = 68C06 (2).dgn	USER NAME = keithbr	DESIGNED -	REVISED -	STATE OF ILLINOIS DEPARTMENT OF TRANSPORTATION	STAGE II TRAFFIC PLAN				F.A.P. RTE.	SECTION	COUNTY	TOTAL SHEETS	SHEET NO.
		DRAWN -	REVISED -						64	(1-2)I,RS-1; (58-1CS)I,RS-2	PEORIA	16	14
	PLOT SCALE = 100.0000' / in.	CHECKED -	REVISED -						CONTRACT NO. 68C06				
	PLOT DATE = 5/15/2015	DATE -	REVISED -										
				SCALE:	SHEET NO.	OF	SHEETS	STA.	TO STA.				



GENERAL NOTES

1. The frame and grate shown on this drawing are for use with all TYPE G-1 and TYPE G-1, SPECIAL DRAINAGE STRUCTURES. See plans for grate type and flow direction.
2. Flow direction: As viewed from street side.
3. Material: cast gray iron.

All dimensions are in inches (millimeters) unless otherwise noted.

[illegible]

